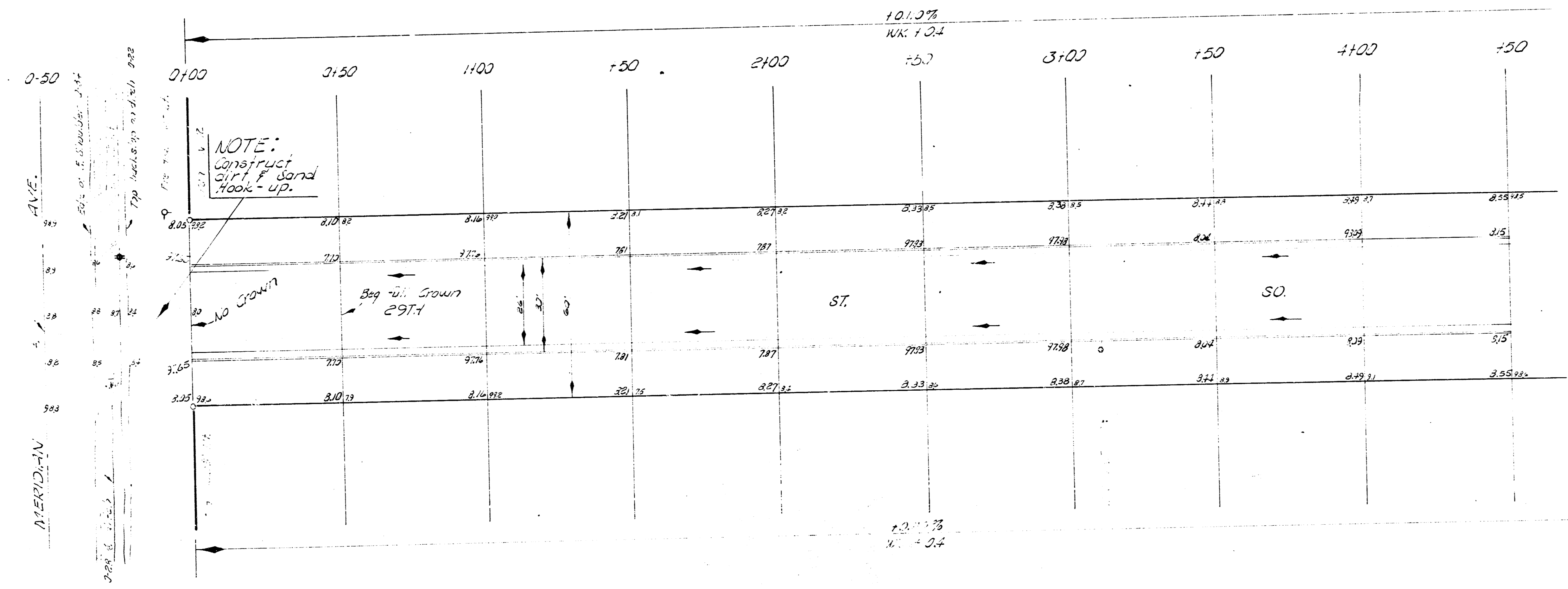
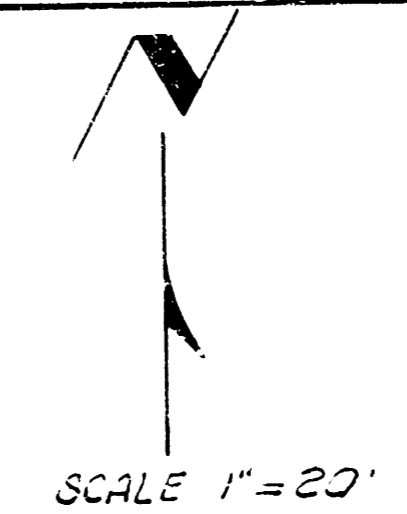


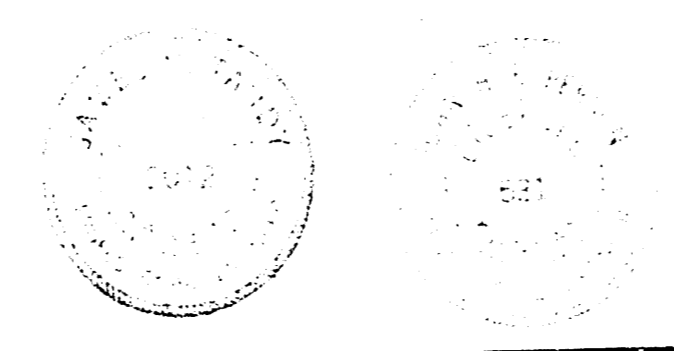
3.11: 89.45  $\frac{1}{2}$ " Bridge Spike E. side Bell Pole on NE cor. 29th & Meridian.  
 B.M. 2003 SE cor. Point No. 200, 29th St. So.  
 Baseline of Stationing on North 12 of 29th St. So.



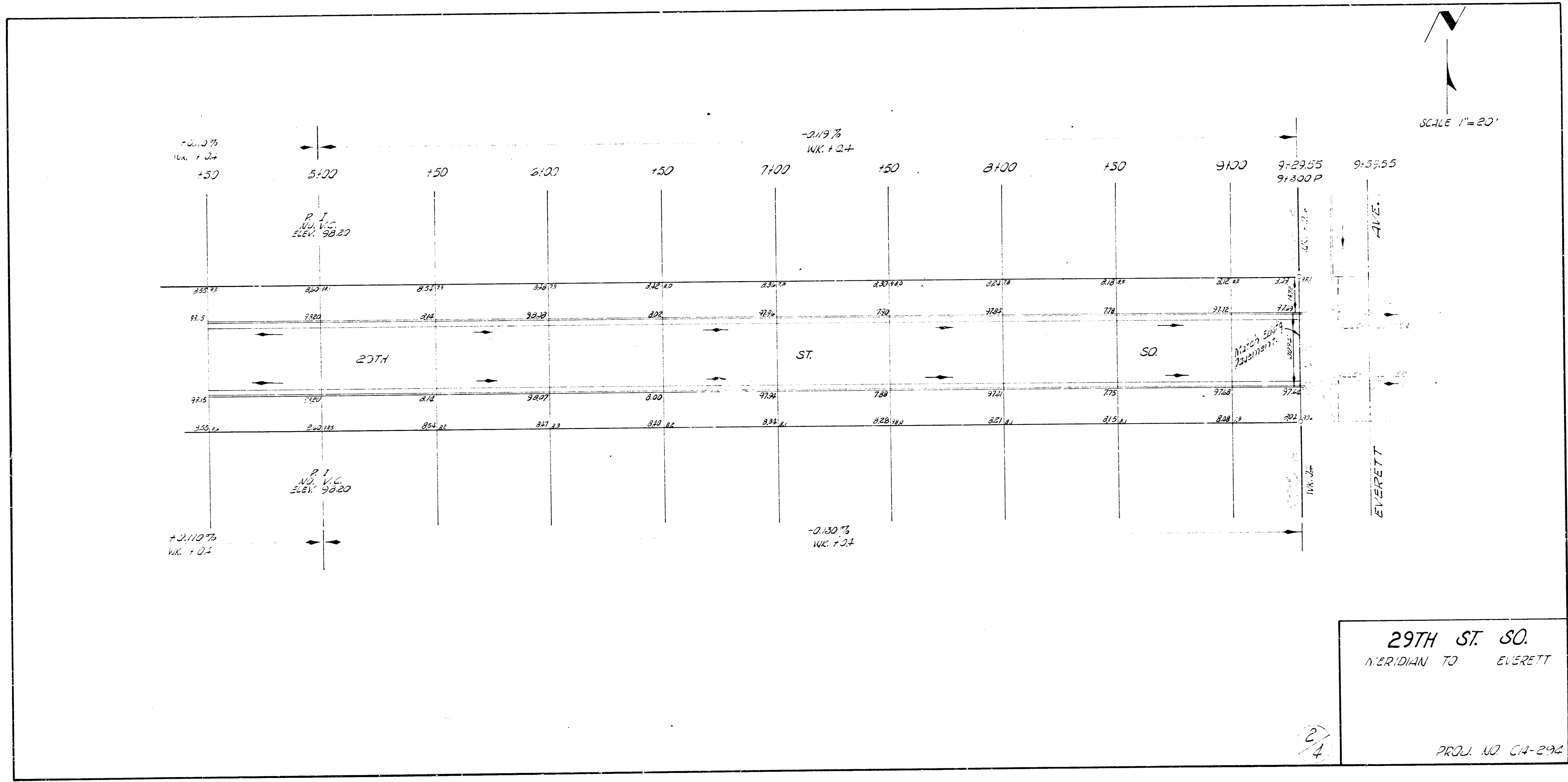
EXCAVATION

CITY	PROR
325	330.6
107 3.3	133.1
35.3	2.16
1743.7	6.166

29TH ST. SO.  
 EL MERIDIAN TO W. EVERETT  
 26-2-30 A. C.  
 CITY OF WICHITA, KANSAS  
 B. E. SMITH CITY ENGINEER  
 OCT. 1958, PROJ. NO. 5-2-37



L.E. B. B.M. 2003  
 1/2" = 20'



29TH ST. SO.  
 MERIDIAN TO EVERETT  
 PROJ. NO. C14-294