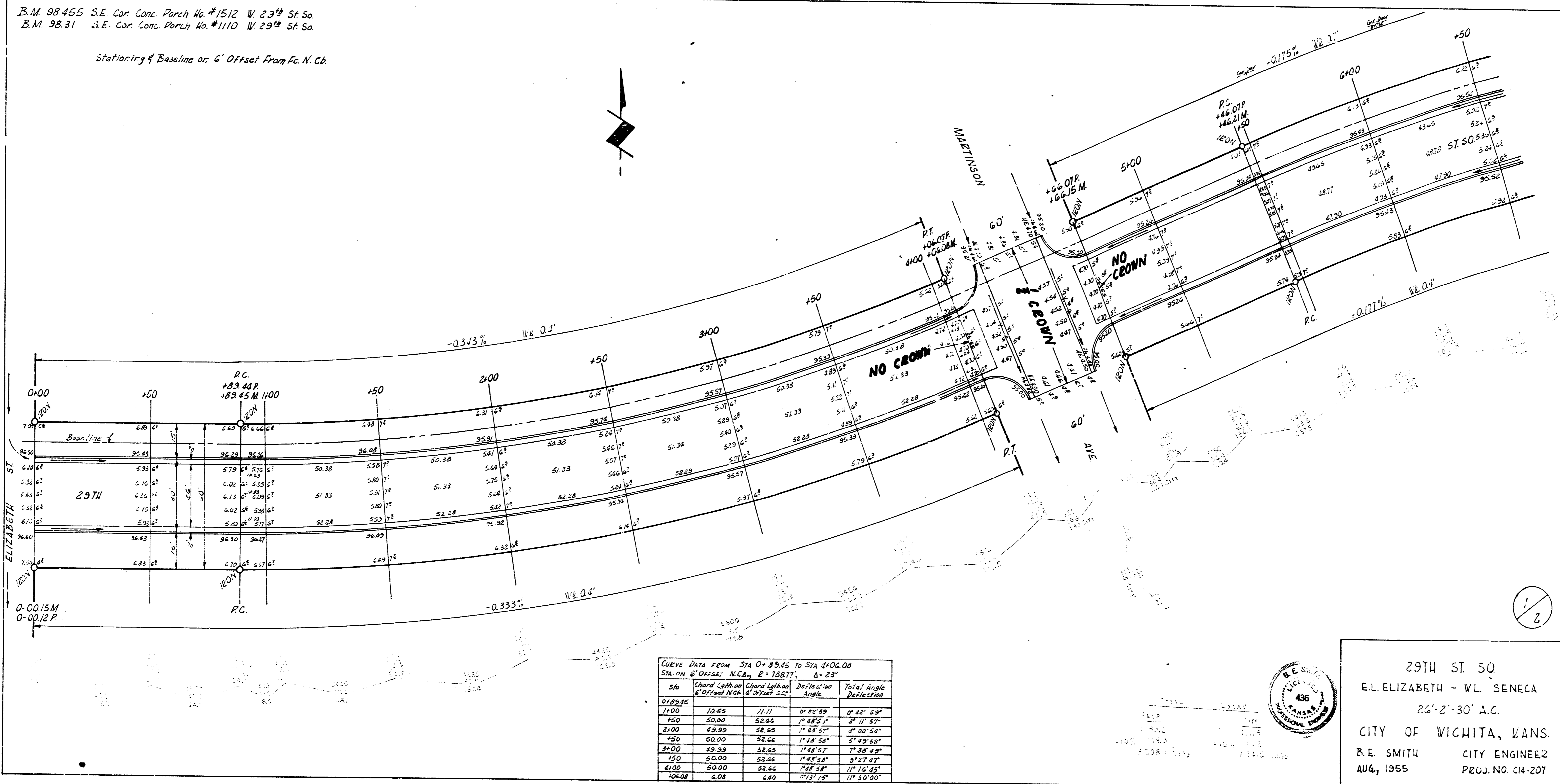


B.M. 98.455 S.E. Cor. Conc. Porch No. #1512 W. 23rd St. So.
 B.M. 98.31 S.E. Cor. Conc. Porch No. #1110 W. 29th St. So.

Stationing of Baseline on 6' Offset from E. N. Cb.



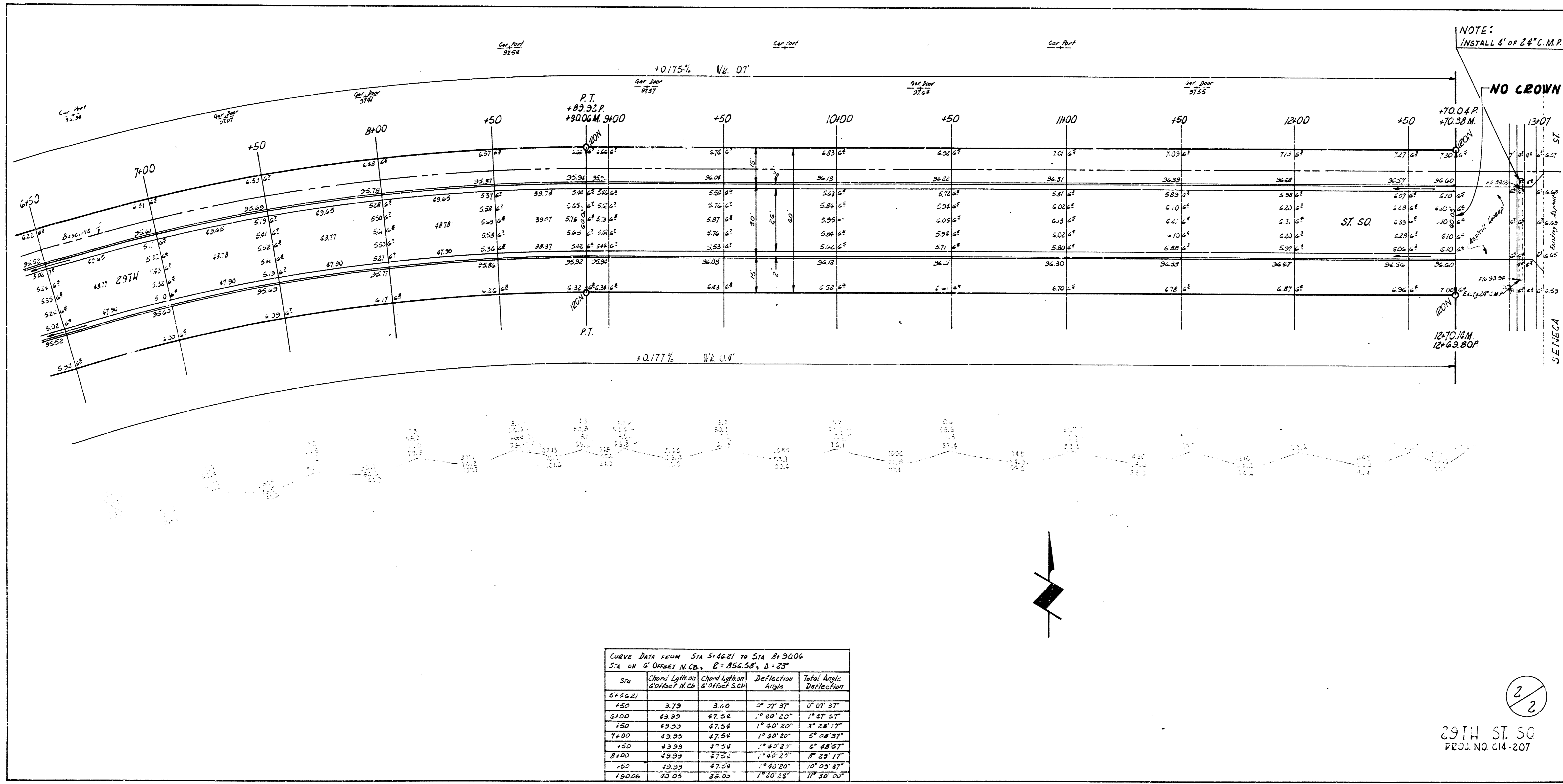
CURVE DATA FROM STA 0+89.65 TO STA 4+06.00
 STATION OFFSET: N.C.A. 2' 13.877' Δ = 23°

Sta	Chain Length to Point	Chain Length to Point	Deflection Angle	Total Angle Deflection
0+89.65				
1+00	10.55	11.11	0° 22' 59"	0° 22' 59"
1+50	50.00	52.66	1° 48' 51"	2° 11' 50"
2+00	49.99	52.65	1° 48' 51"	4° 00' 41"
2+50	50.00	52.66	1° 48' 51"	5° 49' 32"
3+00	49.99	52.65	1° 48' 51"	7° 38' 23"
3+50	50.00	52.66	1° 48' 51"	9° 27' 14"
4+00	50.00	52.66	1° 48' 51"	11° 16' 05"
4+06.00	6.00	6.00	7° 31' 51"	17° 50' 00"



29TH ST. SQ.
 E.L. ELIZABETH - W.L. SENECA
 26'-2'-30' A.C.
 CITY OF WICHITA, KANS.
 B.E. SMITH CITY ENGINEER
 AUG, 1955 PROJ. NO. C14-207





CURVE DATA FROM STA 5+4621 TO STA 8+5006
 STA ON G'DM&T N.C. $E = 856.55'$, $\Delta = 23^\circ$

Sta	Chord Length G'DM&T N.C.	Chord Length G'DM&T S.C.	Deflection Angle	Total Angle Deflection
6+6621				
+50	3.79	3.60	0° 39' 33"	0° 07' 33"
6+00	49.99	47.54	1° 40' 20"	1° 47' 53"
+50	49.99	47.54	1° 40' 20"	3° 28' 13"
7+00	49.99	47.54	1° 40' 20"	5° 08' 33"
+50	49.99	47.54	1° 40' 20"	6° 48' 53"
8+00	49.99	47.54	1° 40' 20"	8° 29' 13"
+50	49.99	47.54	1° 40' 20"	10° 09' 33"
8+5006	40.05	38.00	1° 40' 20"	11° 49' 53"

29TH ST. 50
 PROJ. NO. C14-207