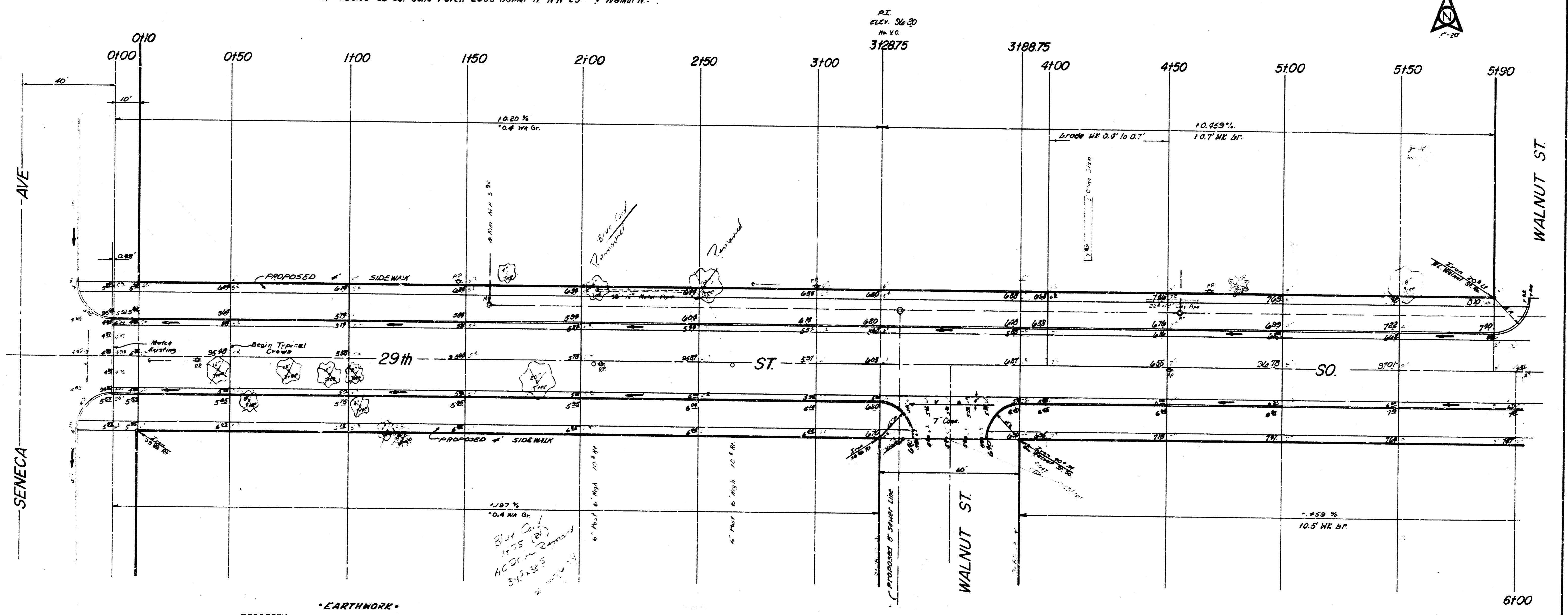


BM = 95.53 "6" in Globe E End NE Radius 29th & Seneca
 BM = 104.47 SE Cor Conc. Patch on House at NW Cor. Osage 129th
 Base Line = 20' S. of N. 29th St. So.
 BM = 100.65 SE Cor Conc. Patch 2953 Walnut N. NW 29th & Walnut N.



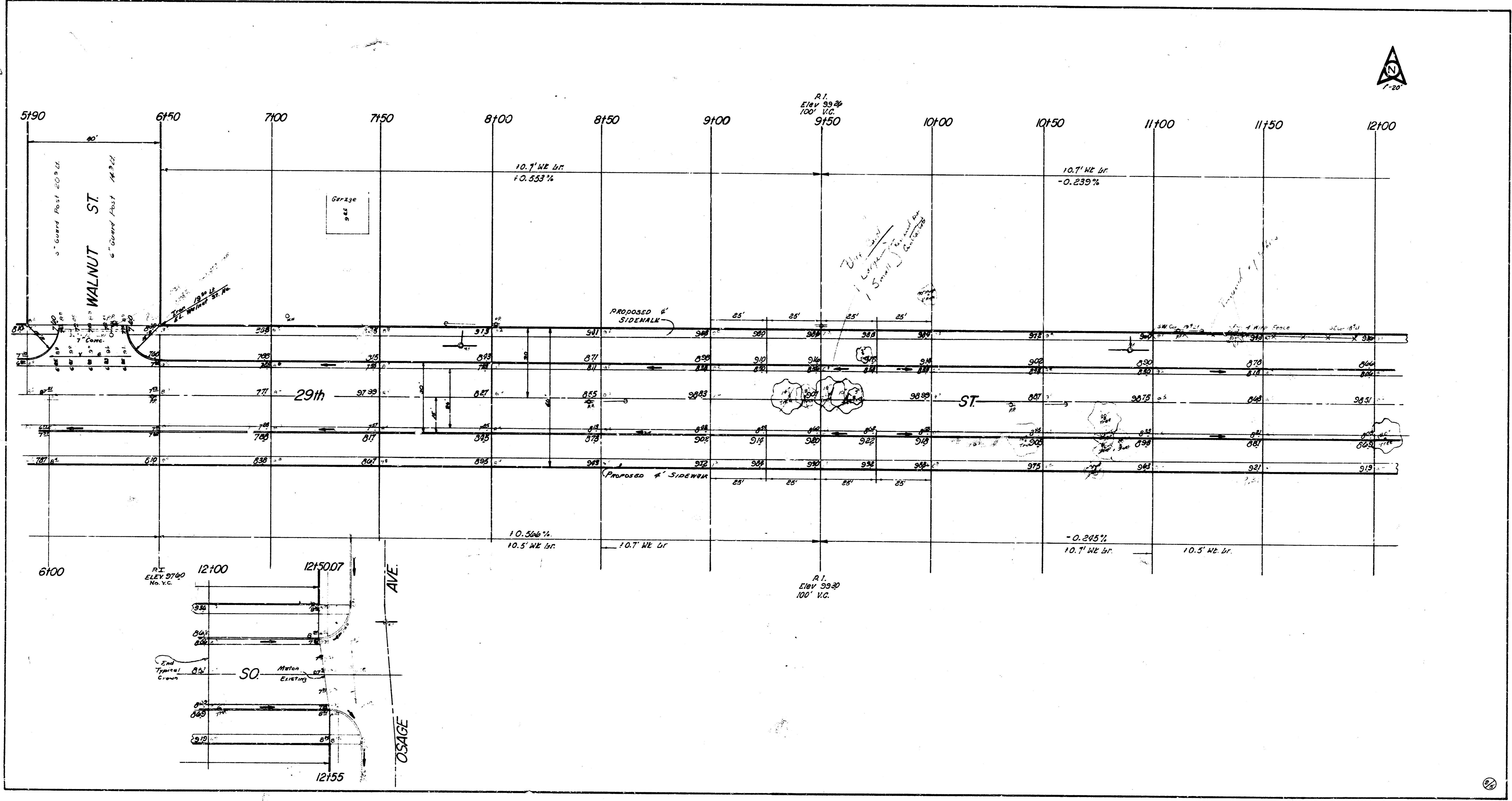
PROPERTY		CITY	
EXCAVATION	COMP. FILL	EXCAVATION	COMP. FILL
2,800.4 Cu Yds	37.7 Cu Yds	214.7 Cu Yds	
100% 280.0 Cu Yds	100% 3.8	110% 21.5	
3,080.4 Cu Yds	41.5 Cu Yds	236.2 Cu Yds	
	S. & M. 722.7 Cu Yds		S. & M. 63.8 Cu Yds

-SIDEWALK-
 Contractor to clear right-of-way, grade parkings and compact fill for proposed sidewalk. Sidewalk to be constructed by "Others".
NOTE TO FIELD ENGINEER: Re-Cross Section South Parking Between Walnut St and Osage Ave. Prior to Construction.



29th ST. SO.
 EL. SENECA AVE to WL OSAGE AVE.
 26'-2"-30' ASPHALTIC CONCRETE
 CITY of NICHITA, KANSAS
 B.E. SMITH CITY ENGINEER
 DATE JUNE 1969 PROJ. NO. C19-11

Stamped/Sealed
Plan of WORK
Checked



20