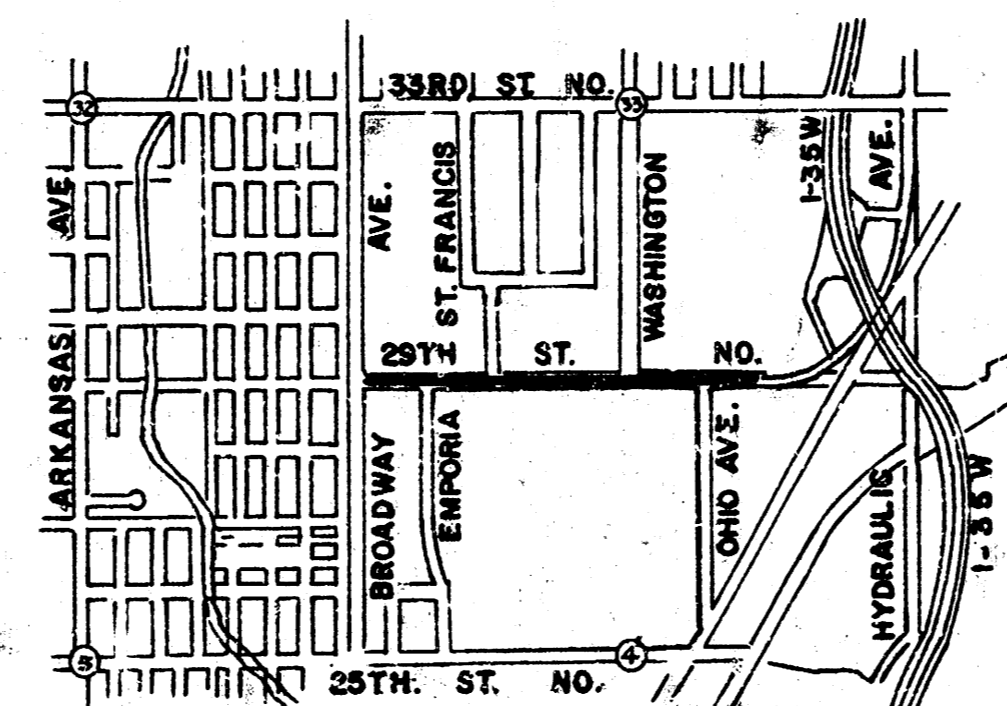


TWENTY-NINTH ST. NORTH
 E. L. BROADWAY AVE. TO 610' E. OF E. L. OHIO AVE.
 48' AND CURB, 3" CONCRETE
 CITY OF WICHITA, KANSAS
 R. W. LINN - CITY ENGINEER
 DECEMBER 1971, PROJECT NO. DAK M 5 66 024
 URBAN RENEWAL AGENCY-NORTH INDUSTRIAL PARK KANSAS R-21
 ECONOMIC DEVELOPMENT ADMINISTRATION PROJECT NO. 05-1-01078

SHEET INDEX

SHEET NUMBER	DESCRIPTION
1	Project Title, Location map
2-9	Pavement construction detail sheets
10-11	Construction detail sheets
12-16	Cross-section sheets
19	Inlet and manhole detail sheet
20-25	Storm water sewer construction detail sheets



MARCH 1972

25
 TWENTY-NINTH ST. NORTH
 E. L. BROADWAY AVE. TO 610' E. OF E. L. OHIO AVE.
 PROJECT NO. DAK M566024

Surveyed by R. W. Inn
 Plan No. 288
 Date 12/1/71
 Checked

T. P. B. M. 128.20, Step B. M. S. S. E. Pole of H. Frame
 N. S. of E. of Front Quality Castings.

B. M. 132.13 Top S. cb. of E. End Return 29th & Broadway S.E. Cor.

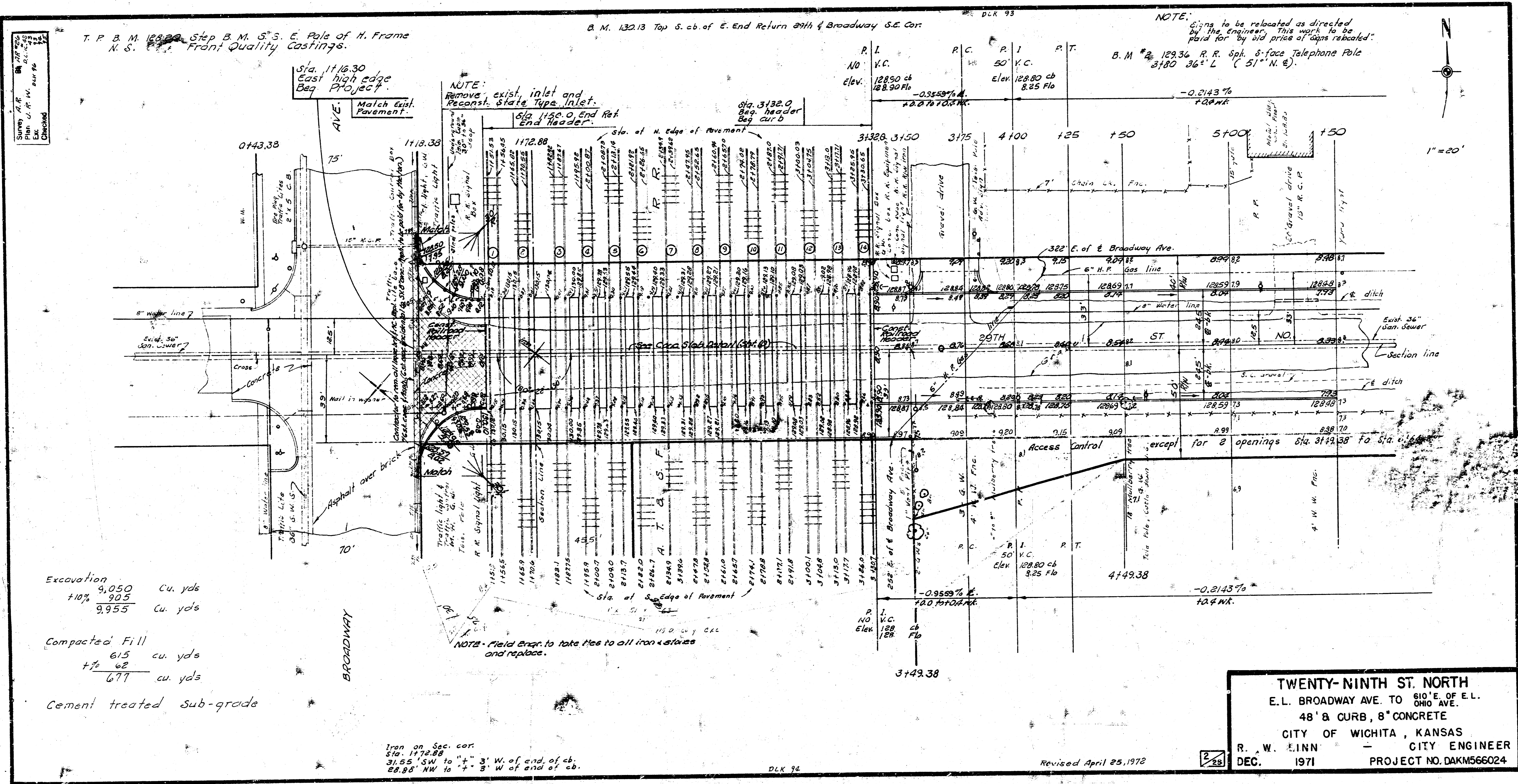
NOTE:
 Signs to be relocated as directed
 by the Engineer. This work to be
 paid for by bid price of signs relocated.
 B. M. #2 129.36 R. R. Sph. 8-face Telephone Pole
 3180 36° L (51° N. E.)

Excavation
 +10% 9,050 Cu. yds
 9,955 Cu. yds

Compacted Fill
 +1% 615 cu. yds
 677 cu. yds

Cement treated sub-grade

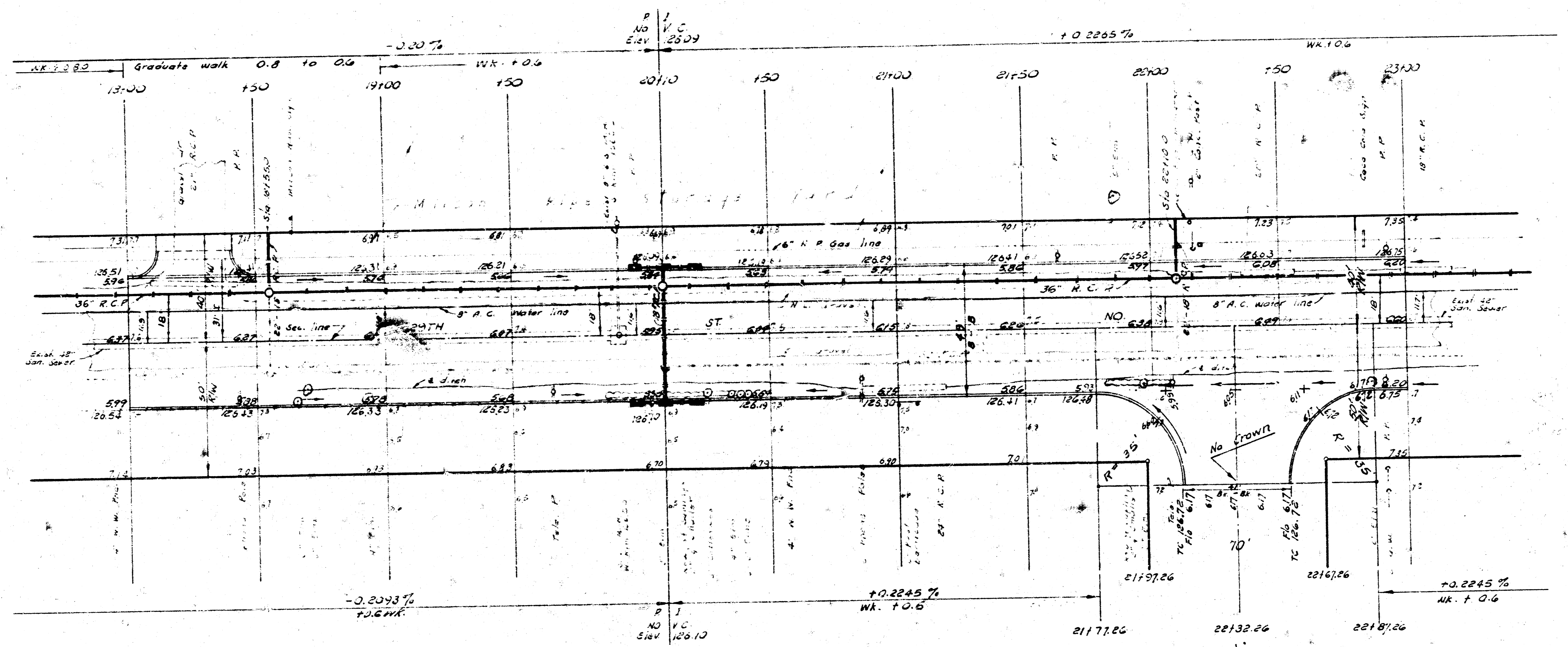
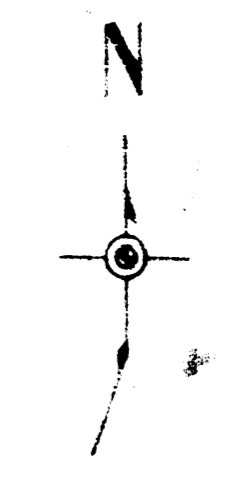
Iron on Sec. cor.
 Sta. 1172.88
 31.55' SW to 1" 3' W. of end of cb.
 28.80' NW to 1" 3' W. of end of cb.



TWENTY-NINTH ST. NORTH
 E.L. BROADWAY AVE. TO 810' E. OF E.L. OHIO AVE.
 48" & CURB, 8" CONCRETE
 CITY OF WICHITA, KANSAS
 R. W. INN - CITY ENGINEER
 DEC. 1971 PROJECT NO. DAKM566024

Revised April 25, 1972

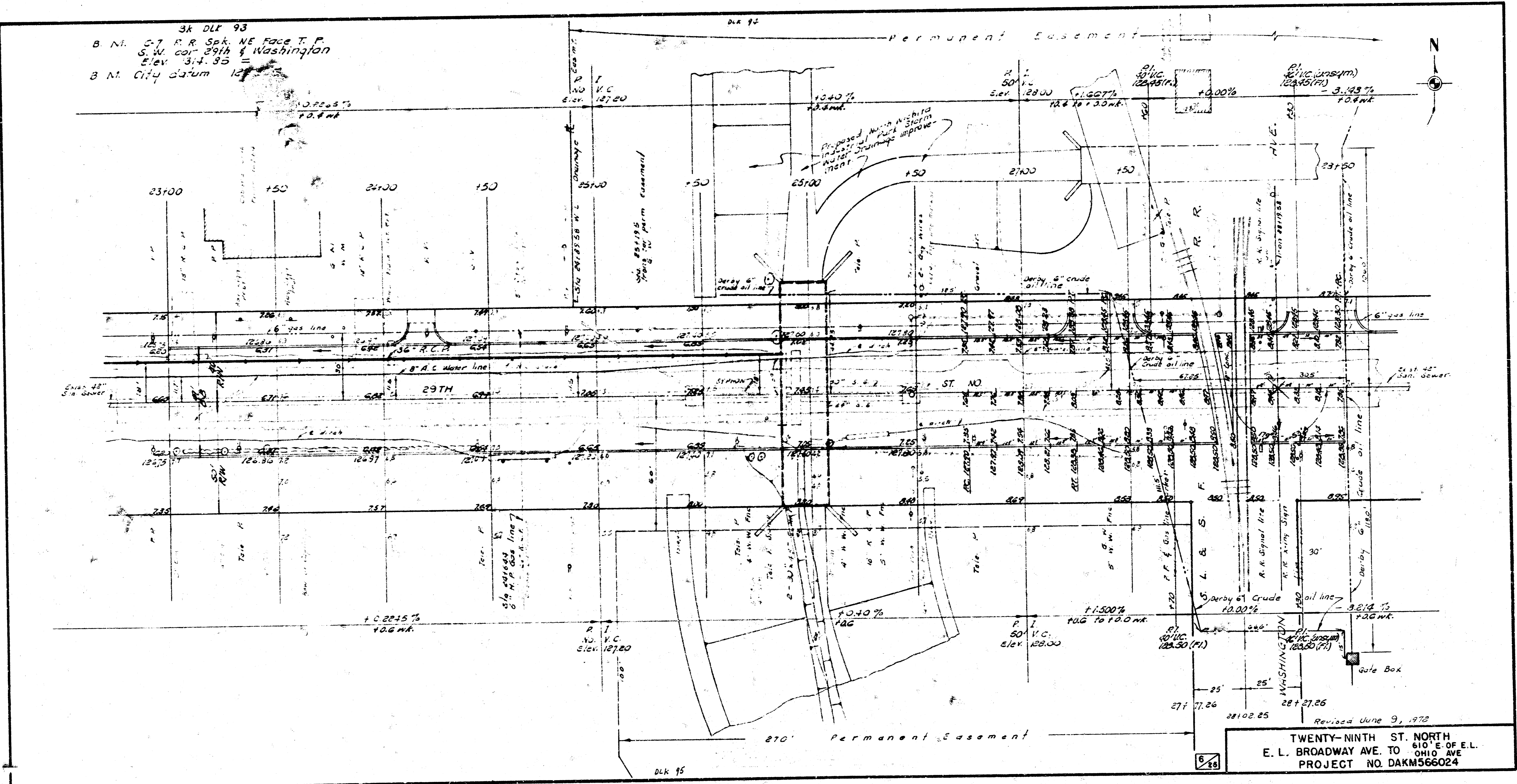
DLK 94



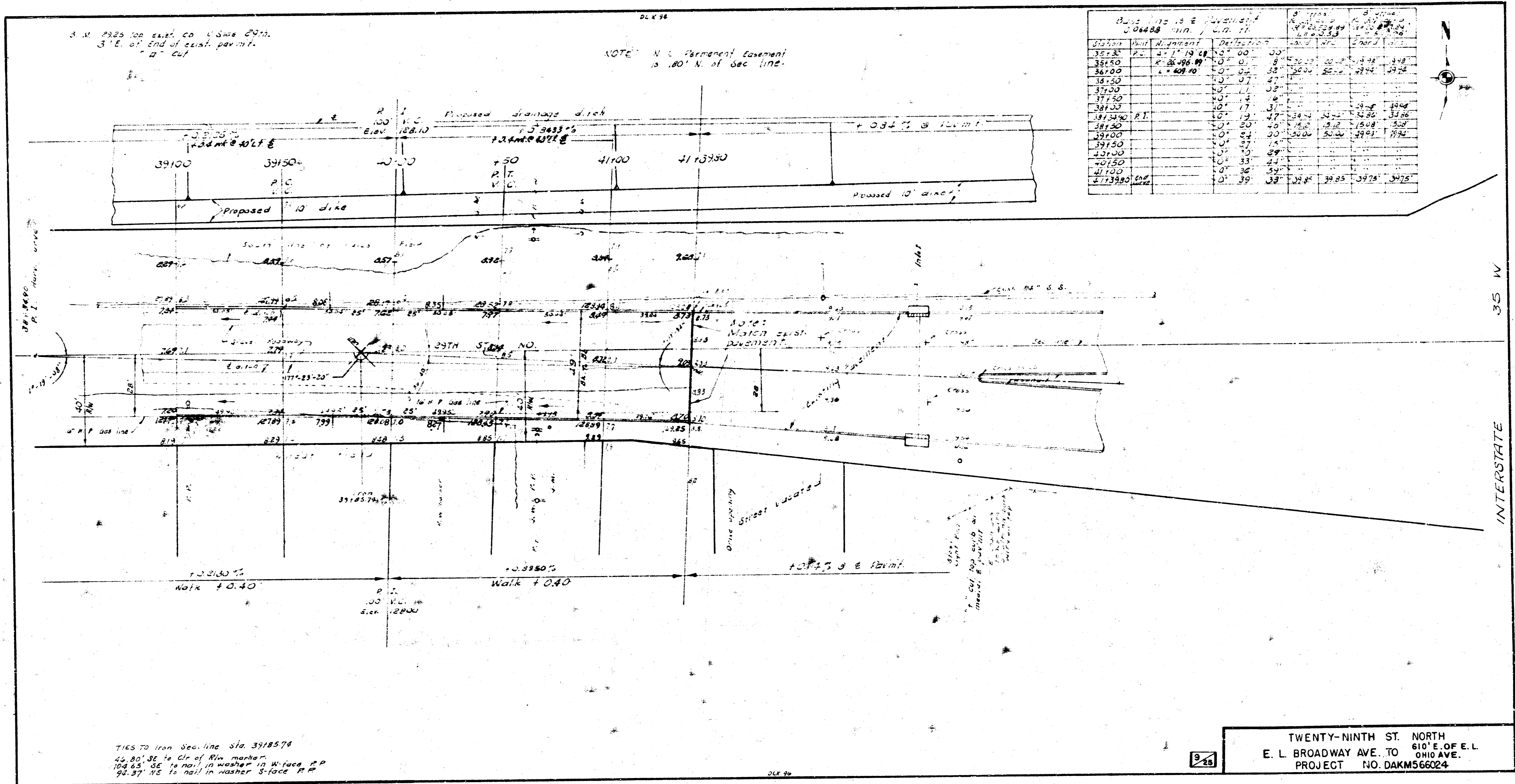
Revised June 9, 1972
 TWENTY-NINTH ST NORTH
 610' E. OF E.L.
 BROADWAY AVE. TO OHIO AVE.
 PROJECT NO. DAKM566024

525

3k DLF 93
 B. N. S. 7 R. R. Spk. NE Face T. P.
 S. W. cor. 29th & Washington
 Elev. 34.35
 B. N. City Datum 127.20

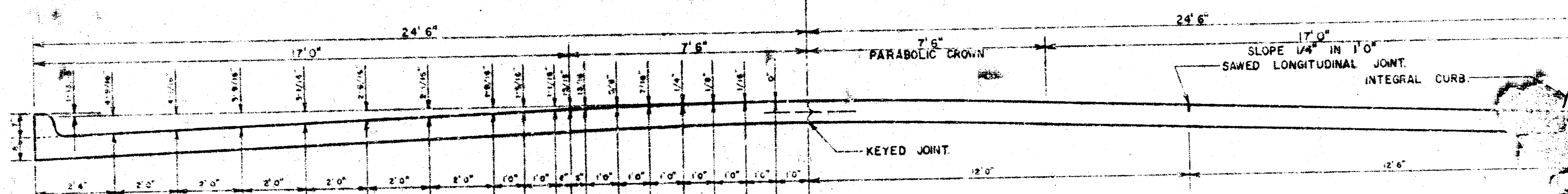


618
 TWENTY-NINTH ST. NORTH
 E. L. BROADWAY AVE. TO 610' E. OF E. L.
 OHIO AVE
 PROJECT NO. DAKM566024
 Revised June 9, 1972



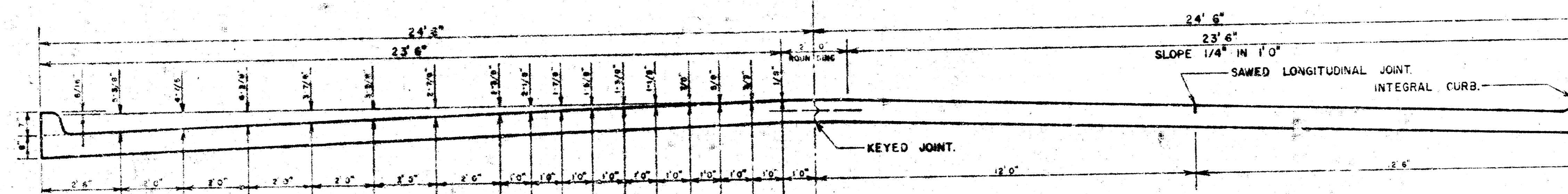
PROJ. NO. DAKM566024
 CITY OF WICHITA, KANSAS
 R. W. LINN, CITY ENGINEER

SYMMETRICAL ABOUT CENTERLINE



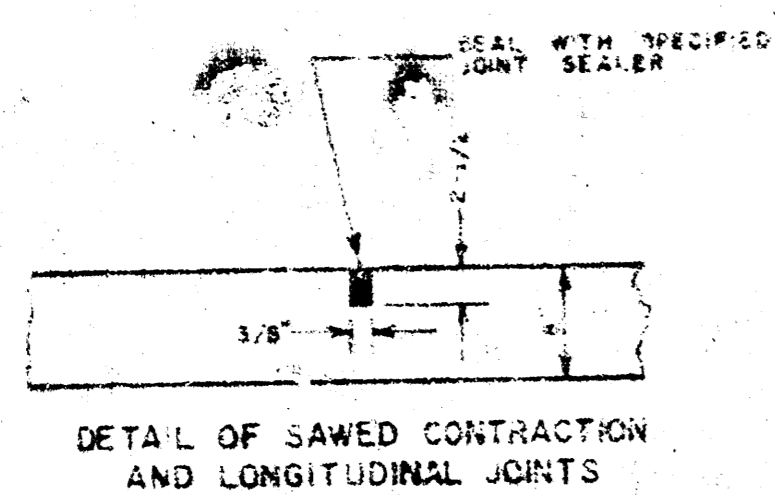
TYPICAL SECTION WITH STANDARD CROWN
 48' 0" CONCRETE PAVEMENT

SYMMETRICAL ABOUT CENTERLINE

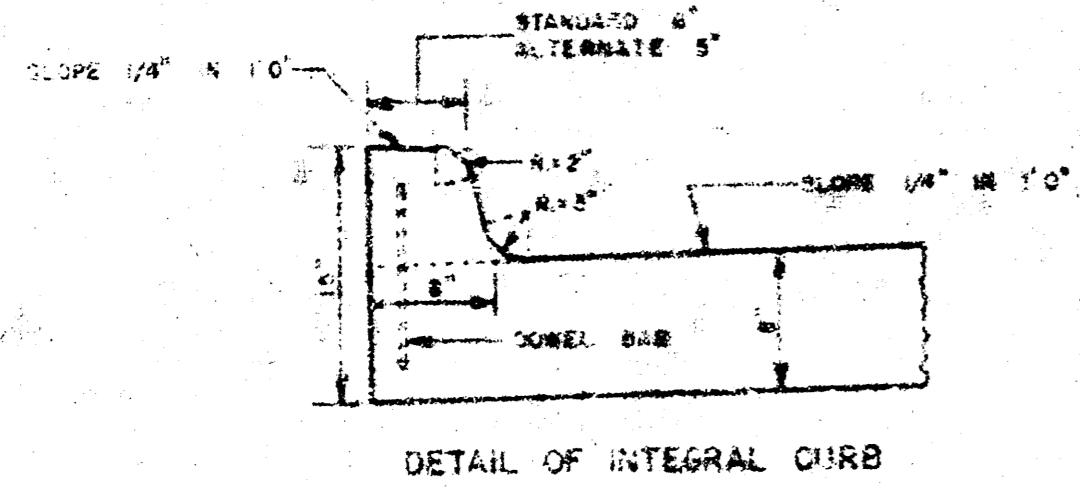
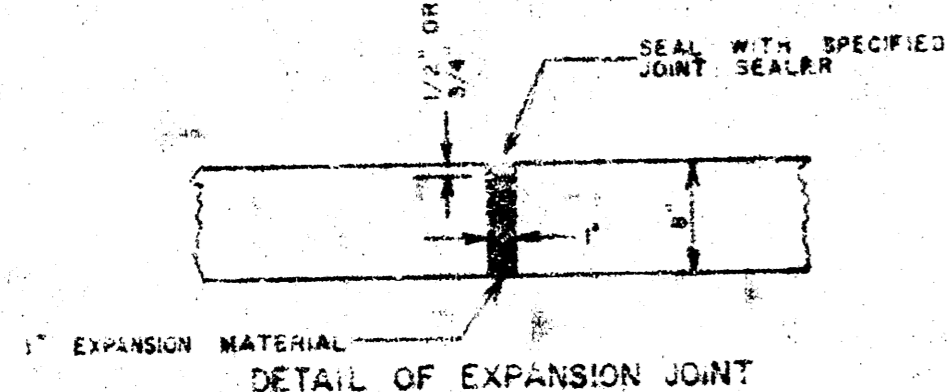


TYPICAL SECTION WITH ALTERNATE CROWN
 48' 0" CONCRETE PAVEMENT

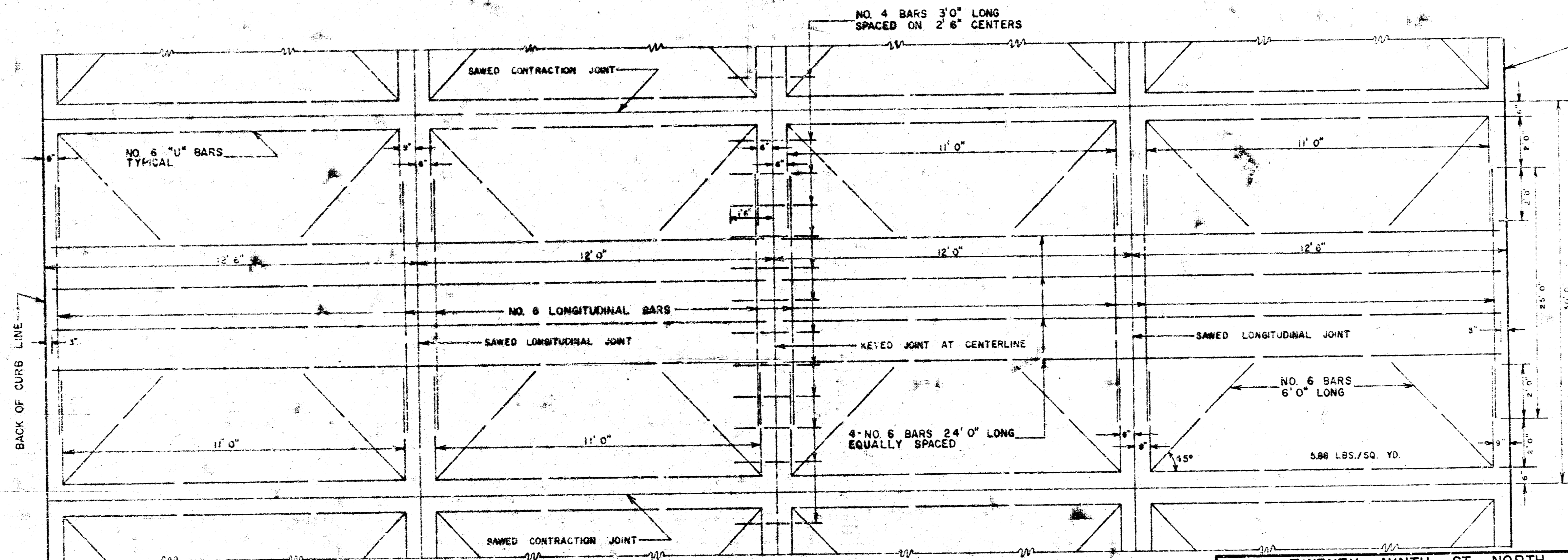
SAWED CONTRACTION JOINTS ARE TO BE CONSTRUCTED AT 30' 0" INTERVALS EXCEPT WHERE AN EXPANSION JOINT IS USED.



EXPANSION JOINTS ARE TO BE CONSTRUCTED AT MAXIMUM INTERVALS OF 120' 0".



INTEGRAL CURB SHALL BE CUT THROUGH TO THE PAVEMENT IN UNIFORM LENGTHS OF NOT MORE THAN TEN FOOT INTERVALS BETWEEN EXPANSION JOINTS. EXPANSION JOINTS HAVING THE SAME THICKNESS AS THE EXPANSION JOINTS IN THE PAVEMENT SHALL BE CONSTRUCTED IN THE INTEGRAL CURB AT THE SPECIFIED LOCATIONS. NUMBER 4 OR NUMBER 6 DOWELS SHALL BE INSTALLED IN THE INTEGRAL CURB AS SHOWN ON APPROXIMATELY 12" CENTERS. PAVEMENT GRADES SHOWN ON PLANS ARE FOR STANDARD CROWN.



TYPICAL STEEL PATTERN
 48' 0" CONCRETE PAVEMENT

TWENTY-NINTH ST. NORTH
 E. L. BROADWAY AVE. TO 610' E. OF E. L. OHIO AVE.
 PROJECT NO. DAKM 566024