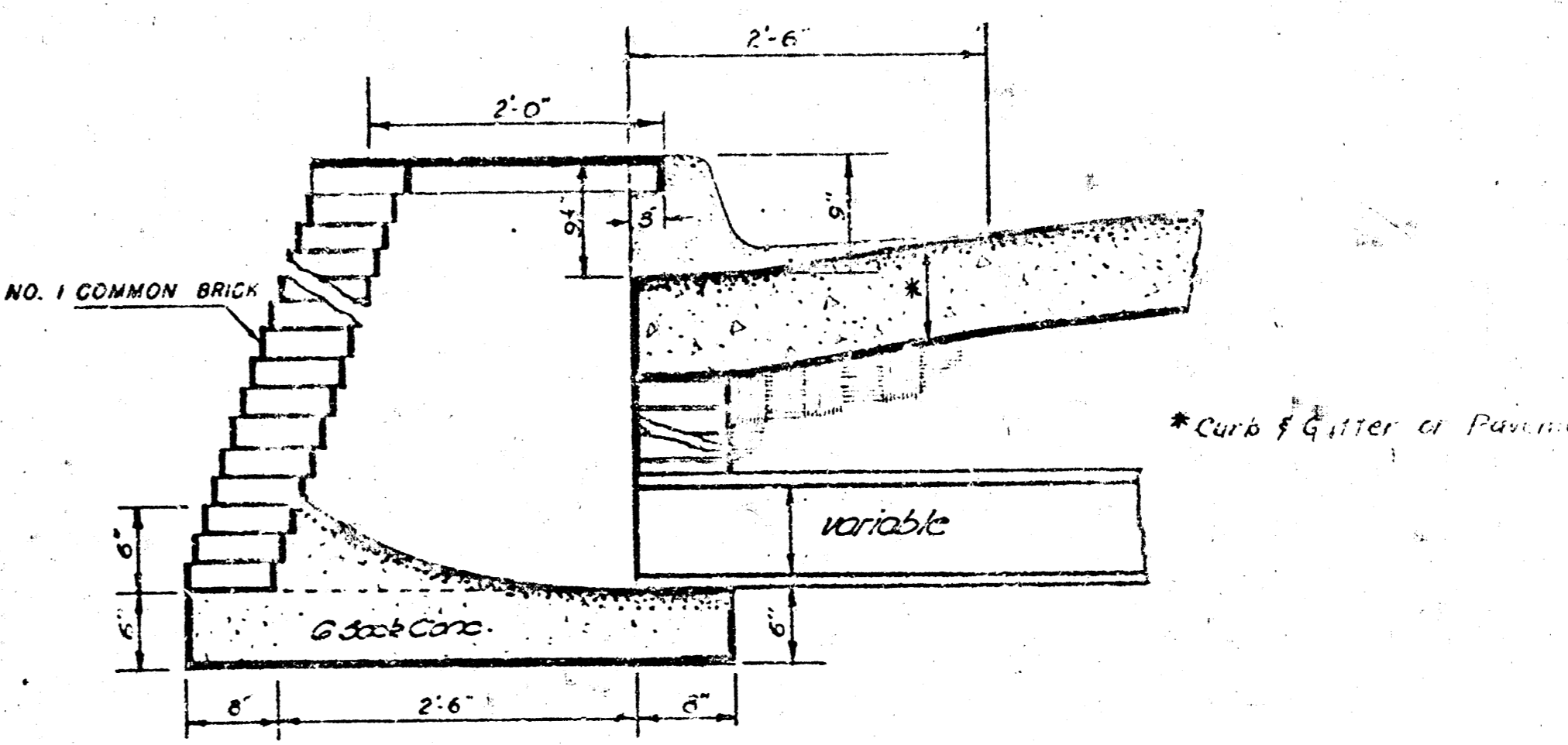
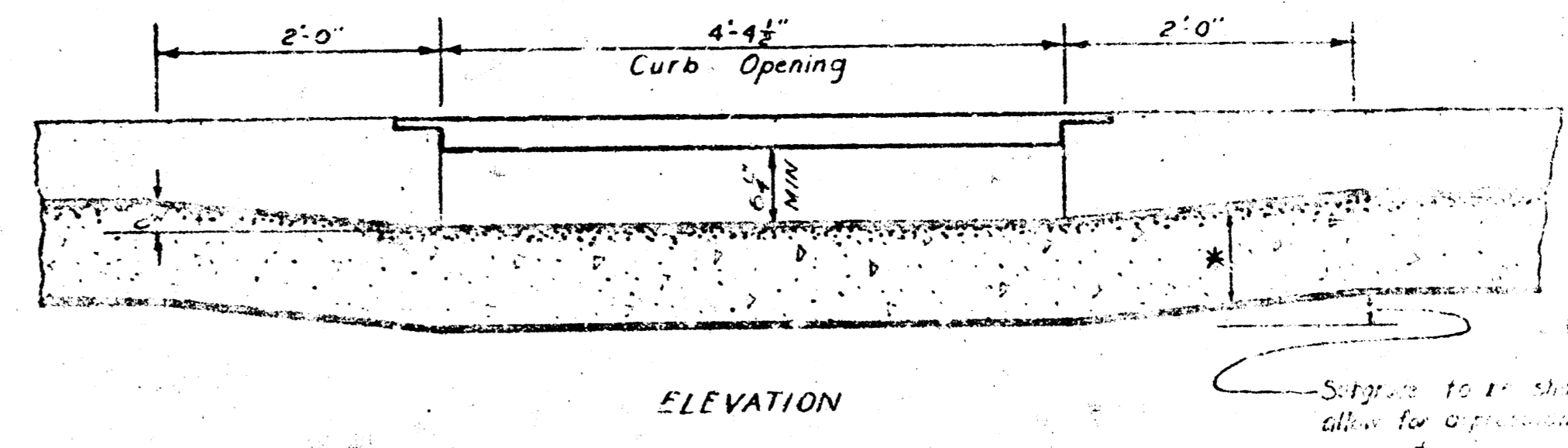
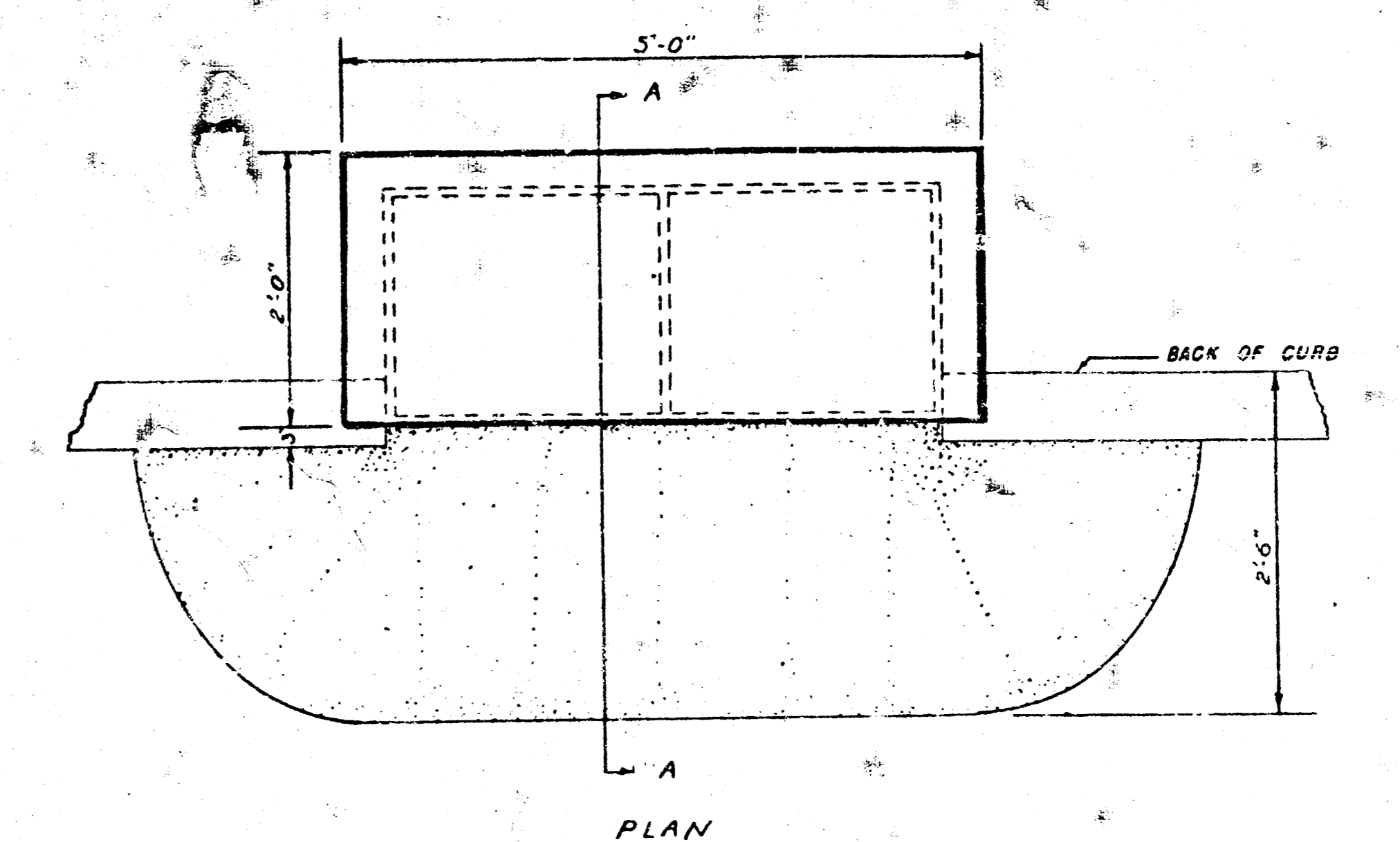
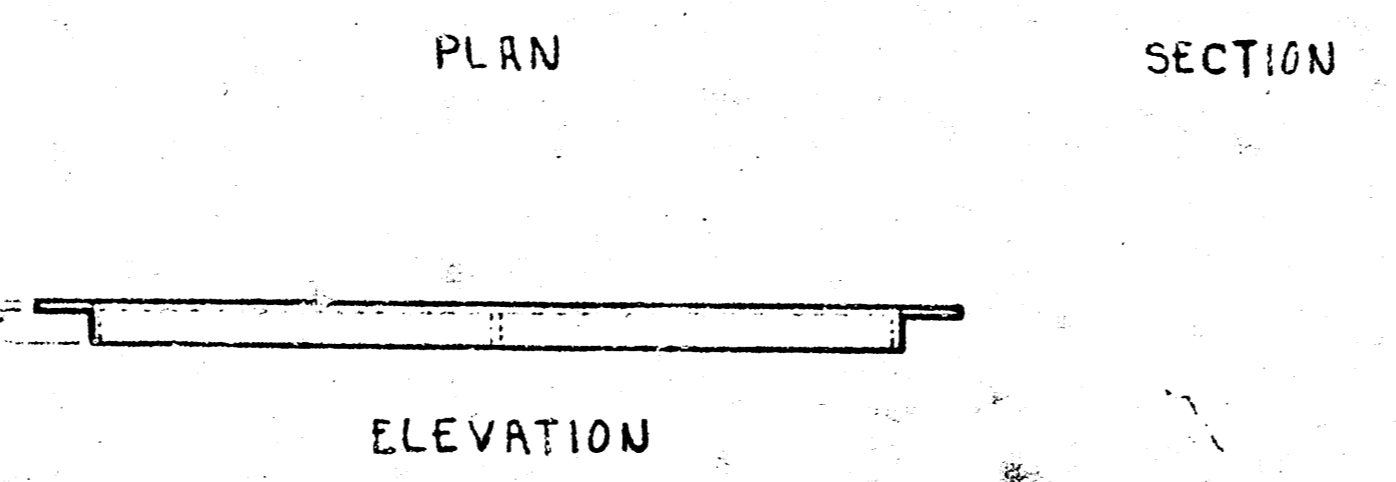
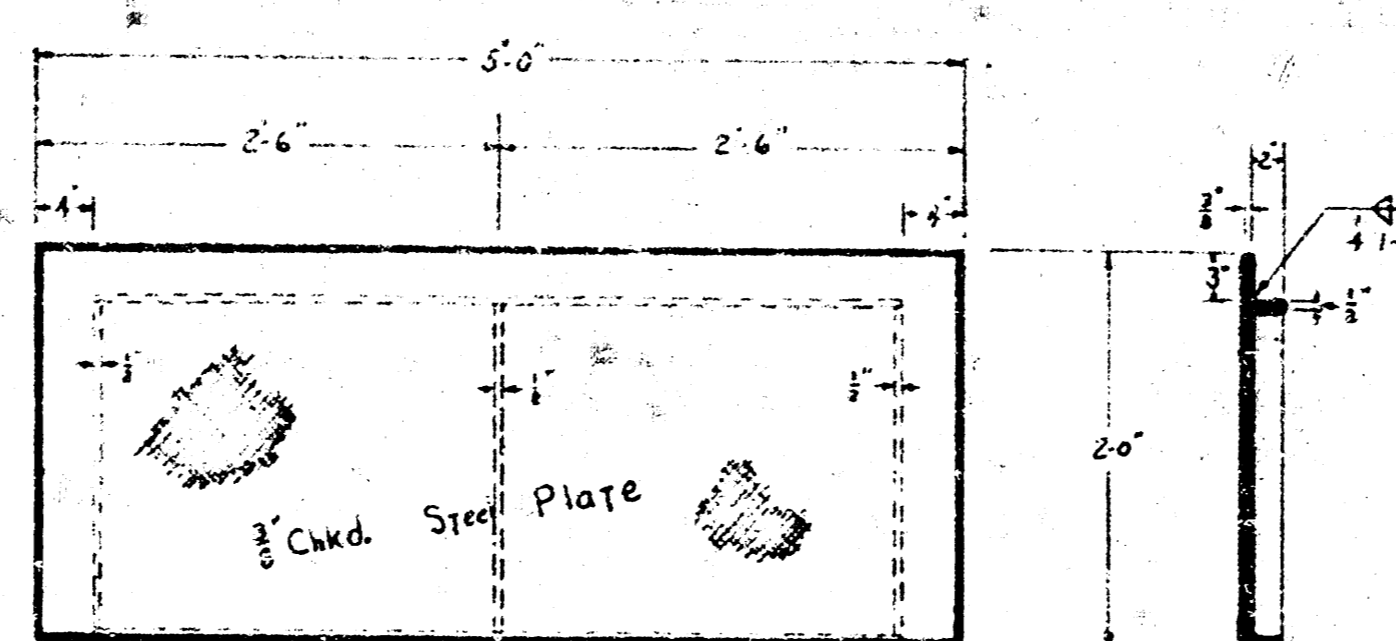


MANHOLES
THE CONCRETE USED FOR MORTAR IN MANHOLES SHALL CONTAIN 8 BAGS OF CEMENT PER CUBIC YARD. STANDARD MANHOLES AND DROP MANHOLES, REGARDLESS OF DIAMETER, SHALL BE BID AT ONE PRICE AS STANDARD MANHOLES. SINGLE OR DOUBLE OUTSIDE DROP MANHOLES SHALL BE BID AT ONE PRICE AS OUTSIDE DROP MANHOLES. ALL MANHOLES WITH PIPES LARGER THAN 24" SHALL BE 5' DIAMETER UNLESS OTHERWISE SPECIFIED ON PLAN. ALL M.H.'S WITH PIPES 24" & SMALLER SHALL BE 4' DIA.



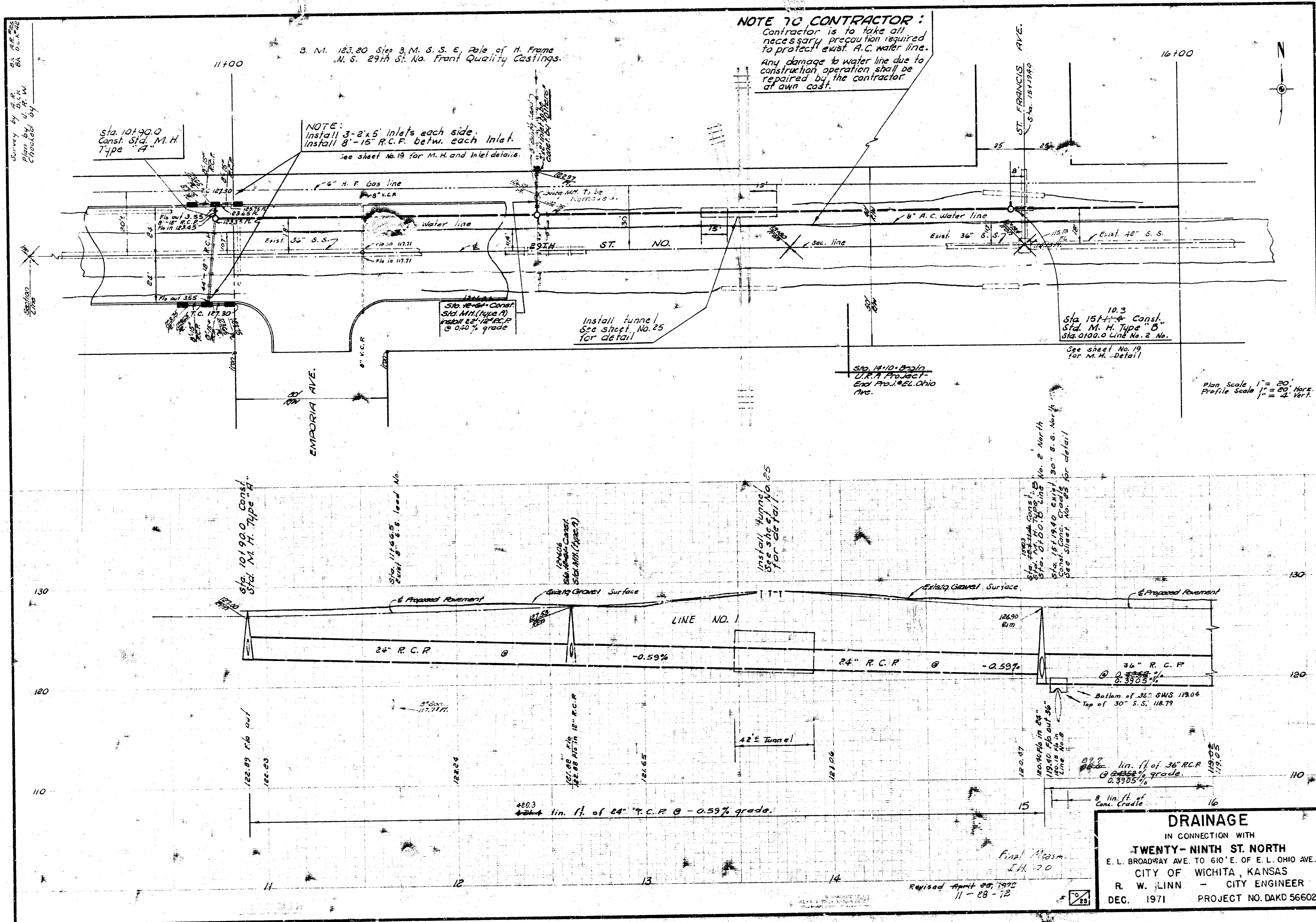
DETAILS OF
SEWER APPURTENANCES
ADOPTED AS STANDARD DESIGN
BY
ENGINEERING DIVISION
CITY OF WICHITA, KANSAS
R. W. LINN CITY ENGINEER

DETAIL
STANDARD 2'x5' INLET.
CITY OF WICHITA, KANSAS
R. W. LINN CITY ENGINEER

* DRAW - 6' ON 5' DIA. M.H.

CITY OF WICHITA
STEEL INLET COVER
WEIGHT = 206
SHOP PAINT: BLACK ASPHALT
SCALE: 1"=1'-0"

DRAINAGE
TWENTY-NINTH ST. NORTH
BROADWAY W.E. TO 610' E.-E.L. OHIO
PROJECT NO. DAKD 5660



NOTE TO CONTRACTOR:
 Contractor is to take all necessary precaution required to protect exist. A.C. water line. Any damage to water line due to construction operation shall be repaired by the contractor at own cost.

NOTE:
 Install 3-2x5 Inlets each side. Install 8-15" R.C.P. betw. each Inlet. See sheet No. 19 for M.H. and Inlet details.

Sta. 10190.0
 Const. Std. M.H. Type "A"

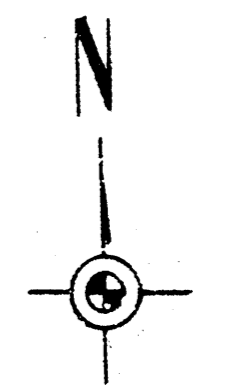
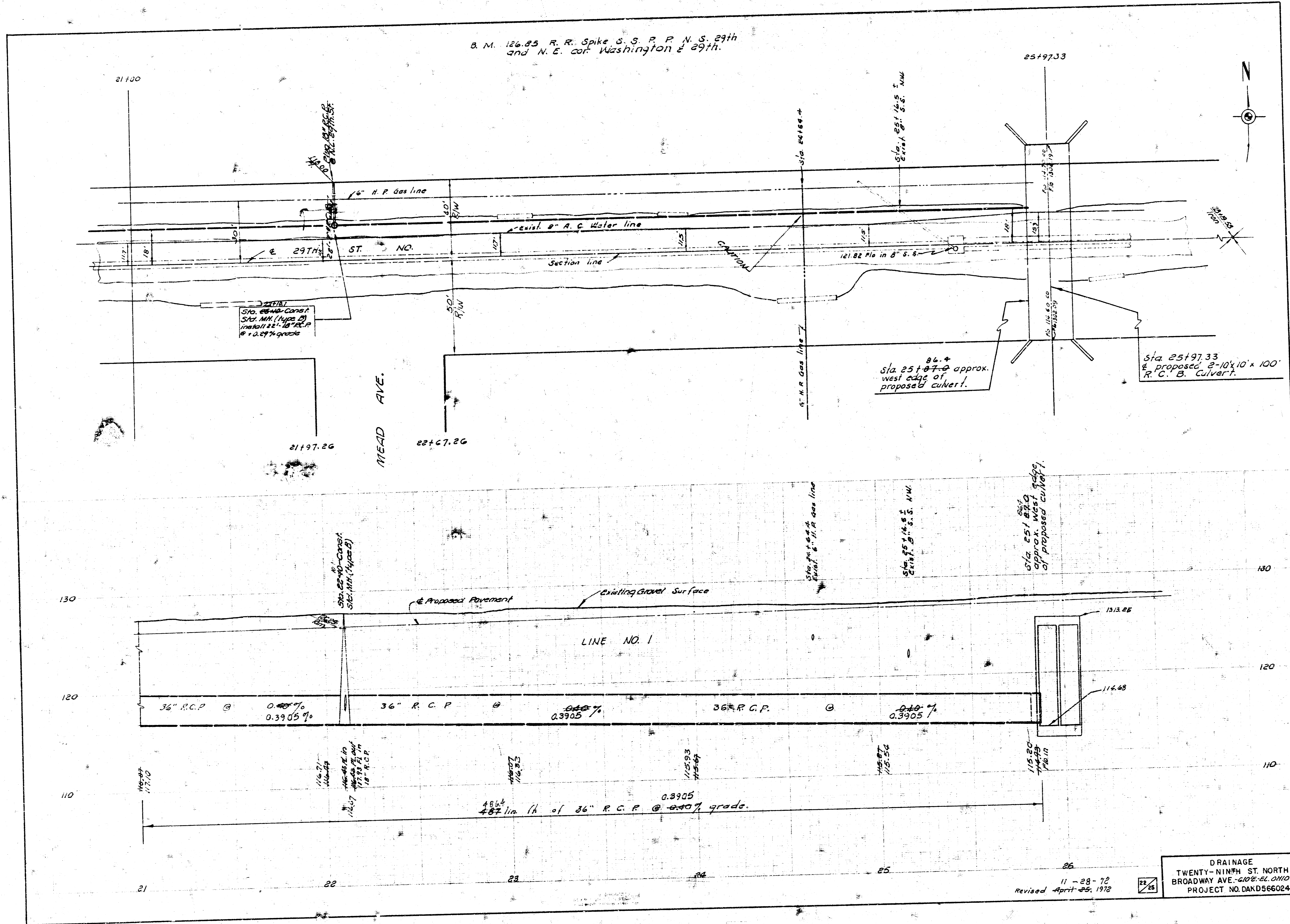
Sta. 15110.0 Const. Std. M.H. Type "B"
 Sta. 0100.0 Line No. 2 No. See sheet No. 19 for M.H. Detail

Plan Scale 1" = 20'
 Profile Scale 1" = 20' Vert.

DRAINAGE
 IN CONNECTION WITH
TWENTY-NINTH ST. NORTH
 E. L. BROADWAY AVE. TO 610' E. OF E. L. OHIO AVE.
 CITY OF WICHITA, KANSAS
 R. W. LINN - CITY ENGINEER
 DEC. 1971 PROJECT NO. DAKD 566024

Revised April 29, 1972
 11-28-72

B. M. 126.85 R. R. Spike S. S. P. P. N. S. 29th
and N. E. cor. Washington & 29th.



21+00 21+97.26 22+67.26 25+97.33

16" H.P. Gas line
exist. 8" A.C. Water line
Section line
121.82' dia in 8" S.S.
5" H.P. Gas line
121.82' dia in 8" S.S.
121.82' dia in 8" S.S.

ST. NO.

Sta. 25+97.33 approx. west edge of proposed culvert.
Sta. 25+97.33 proposed 2-10'x10'x100' R.C.B. Culvert.

MEAD AVE.

Proposed Pavement
Existing Gravel Surface

LINE NO. 1

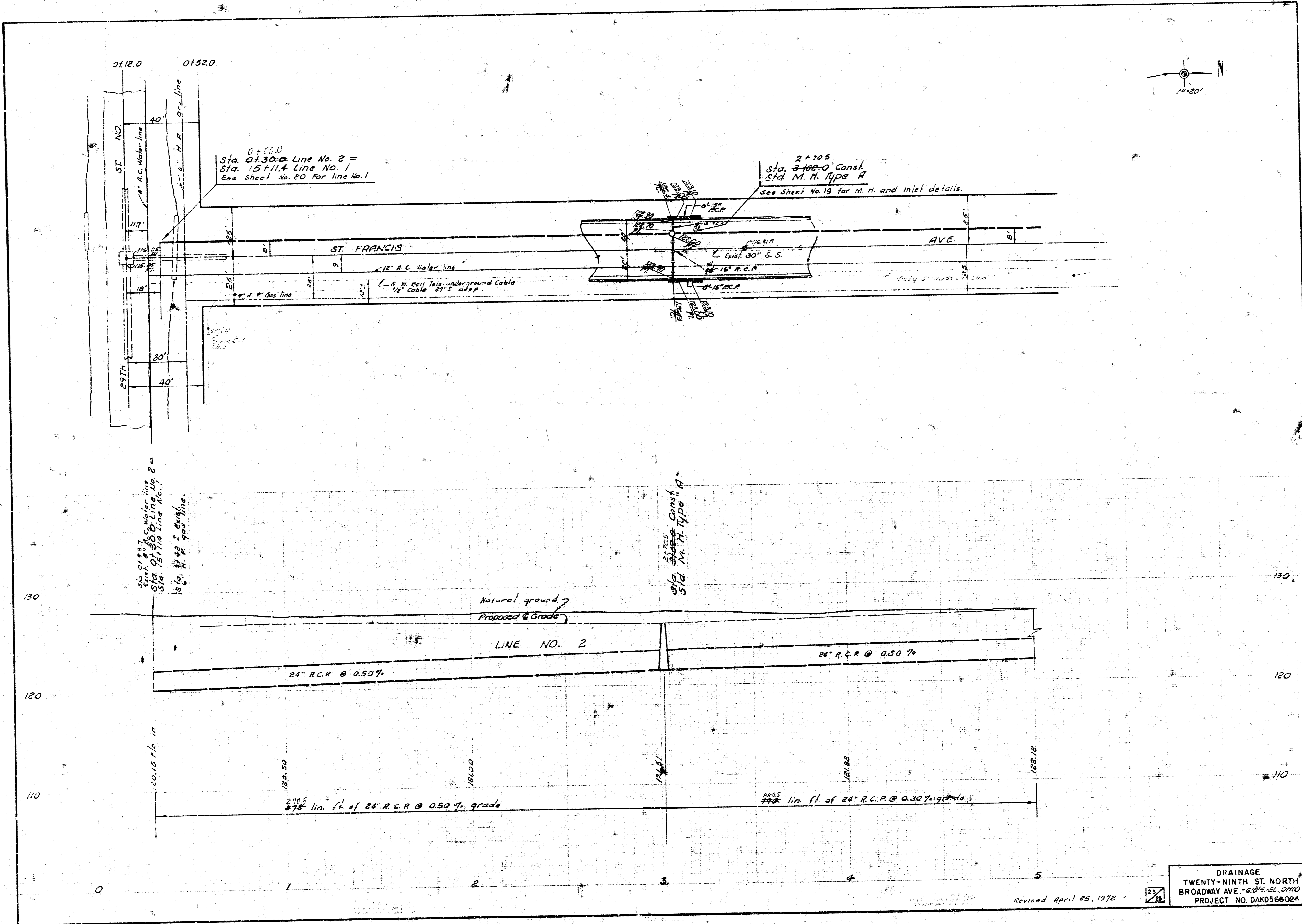
36" R.C.P. @ 0.3905%
36" R.C.P. @ 0.3905%
36" R.C.P. @ 0.3905%

48" dia in 18" R.C.P. @ 0.3905% grade.

117.10 116.71 116.49 116.27 115.93 115.69 115.54 115.20 114.88 114.68 113.25

11-28-72
Revised April 25, 1972

DRAINAGE
TWENTY-NINTH ST. NORTH
BROADWAY AVE. - GOE-EL. OHIO
PROJECT NO. DAKD56024

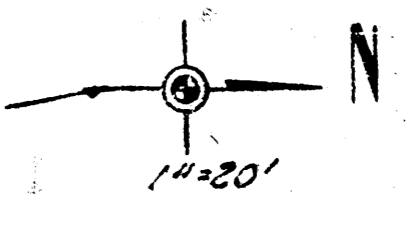


0+00.0
 Sta. 0+30.0 Line No. 2 =
 Sta. 15+11.4 Line No. 1
 See Sheet No. 20 For line No. 1

2+10.5
 Sta. 2+105.0 Const.
 Std. M. H. Type A
 See Sheet No. 19 for M. H. and Inlet details.

Sta. 0+23.7
 Sta. 0+30.0
 Sta. 0+30.0
 Sta. 0+30.0
 Sta. 0+30.0
 Sta. 0+30.0

Sta. 2+10.5
 Sta. 2+10.5
 Sta. 2+10.5
 Sta. 2+10.5



23
 25

DRAINAGE
 TWENTY-NINTH ST. NORTH
 BROADWAY AVE. - 60' x 24" OHIO
 PROJECT NO. DAKD56602A

Revised April 25, 1972

