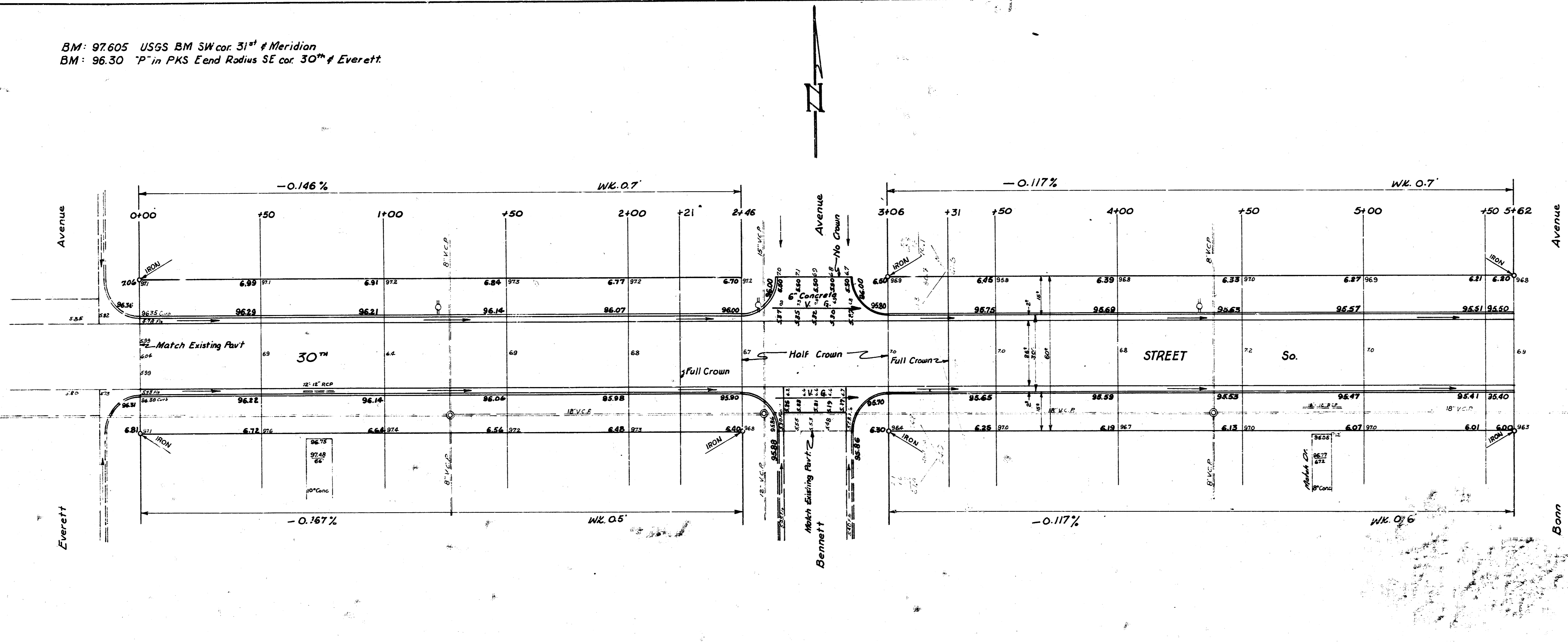


BM: 97.605 USGS BM SW cor. 31st & Meridian
 BM: 96.30 "P" in PKS E end Radius SE cor. 30th & Everett.

Surveyed
 1/20/50
 JAMES H. TAYLOR
 CIVIL ENGINEER
 LICENSE NO. 531



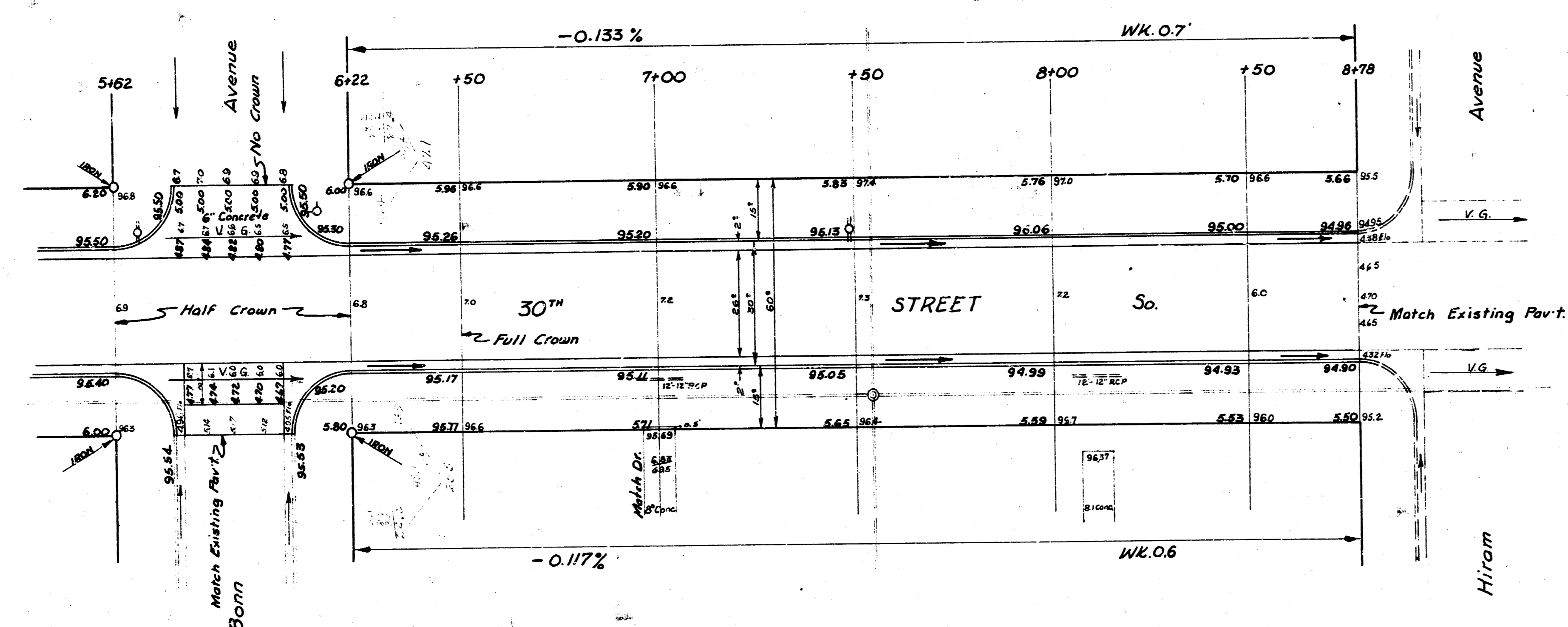
NOTICE TO CONTRACTOR:
 All entrance pipes are to be disposed of in accordance with instructions from City Dirt Checker.

SHEET 1 OF 4

30TH STREET SOUTH
 EL Everett to WL Hiram
 26-2-30 A.C.
 CITY OF WICHITA, KANSAS
 B. E. SMITH CITY ENGINEER
 APRIL 1958 PROJ. NO. C14-298



BM: 9745 NW car care porch Ho# 2005 W 30th St. So.



30th STREET SOUTH
EL Everett to WL Hiram

PROJ NO C14-298
Sheet 2 of 4