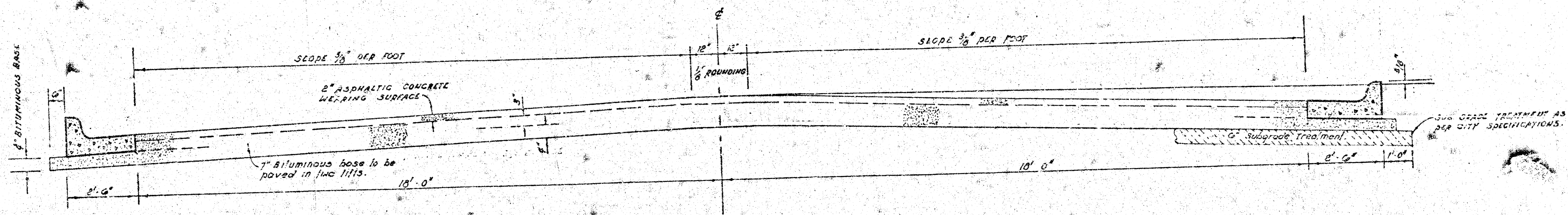


**30th ST. SO. & ALL HALLOWS**  
 E.L. Lot 6, Blk. 1, KESSLER-KOCH ADD'N.--310.12' NO. of N.L. 29th ST. SO.  
**29th ST. SO.**  
 E.L. Lot 3, Blk. 2, KESSLER-KOCH ADD'N.--W.L. ALL HALLOWS  
 472-76-245-80338-000-000-001

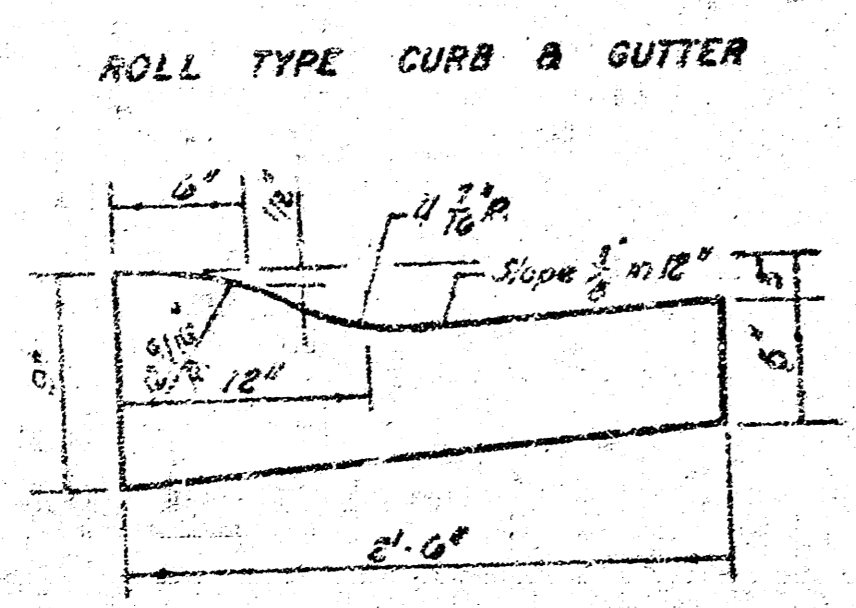
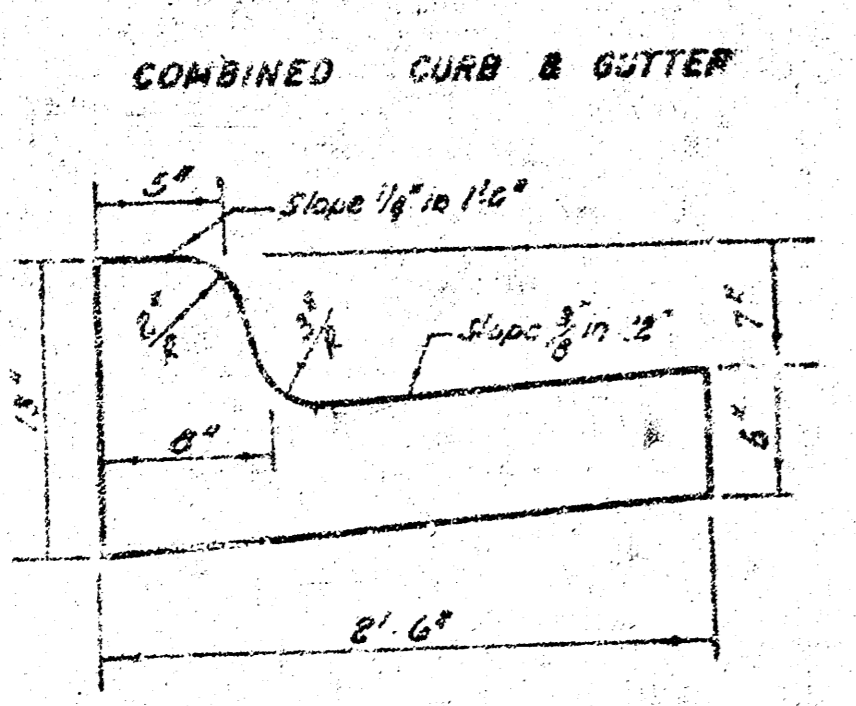


The A.C. pavement between the curb & gutter shall be paid as 30 yds 9" A.C. pavement (2" Bituminous base). The Bituminous base under the curb & gutter shall be paid as 50 yds 4" Bituminous base.

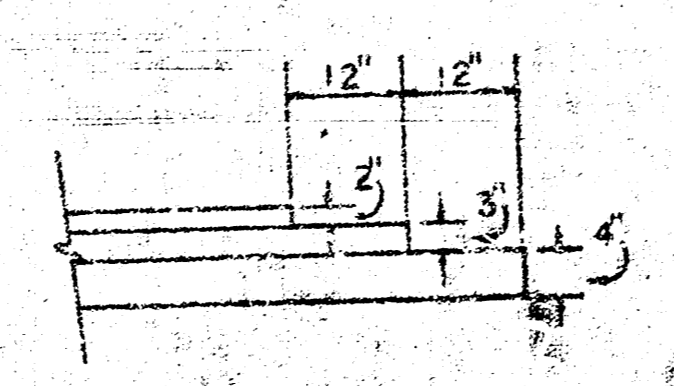
**TYPICAL SECTION**

**4' ASPHALTIC CONCRETE PAVEMENT WITH BITUMINOUS BASE**

A TACK COAT OF EMULSIFIED ASPHALT (SS-1H) SHALL BE APPLIED AT AN APPROXIMATE RATE 0.05 GALLONS PER SQ YD BETWEEN LIFTS OF ASPHALTIC MATERIALS WHEN ORDERED BY THE ENGINEER. TACK COAT WILL NOT BE PAID FOR DIRECTLY AND SHALL BE CONSIDERED AS SUBSIDIARY TO PRICE BID FOR ASPHALTIC PAVEMENT. BITUMINOUS BASE AND ASPHALTIC CONCRETE WEARING SURFACE SHALL BE PLACED WITH A LAYDOWN MACHINE HAVING AUTOMATIC ELECTRONIC CONTROLS FOR CROWN AND GRADE. CONSTRUCTION JOINTS IN EACH LIFT SHALL BE STAGGERED A MINIMUM DISTANCE OF 1' WITH JOINTS IN PRECEDING LIFTS AND SUCH THAT A JOINT WILL BE CONSTRUCTED ON THE PAVEMENT CENTERLINE IN THE TOP LIFT.

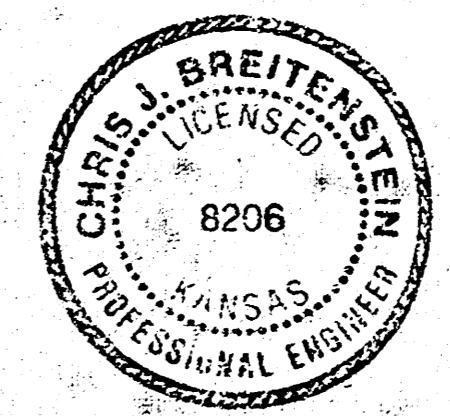


**DETAIL OF TRANSVERSE CONSTRUCTION JOINTS**



*Kessler Koch*

TRANSVERSE CONSTRUCTION JOINTS SHALL BE CONSTRUCTED IN FLEXIBLE BASE PAVEMENTS AT LOCATIONS WHERE PAVEMENT TEMPORARILY ENDS TO FACILITATE FUTURE PAVEMENT CONSTRUCTION AS SHOWN BY DETAIL. THE COST OF CONSTRUCTING THE TRANSVERSE CONSTRUCTION JOINTS SHALL NOT BE MEASURED OR PAID FOR DIRECTLY BUT SHALL BE INCLUDED IN THE BID PRICE FOR SQUARE YARDS OF ASPHALTIC CONCRETE PAVEMENT.

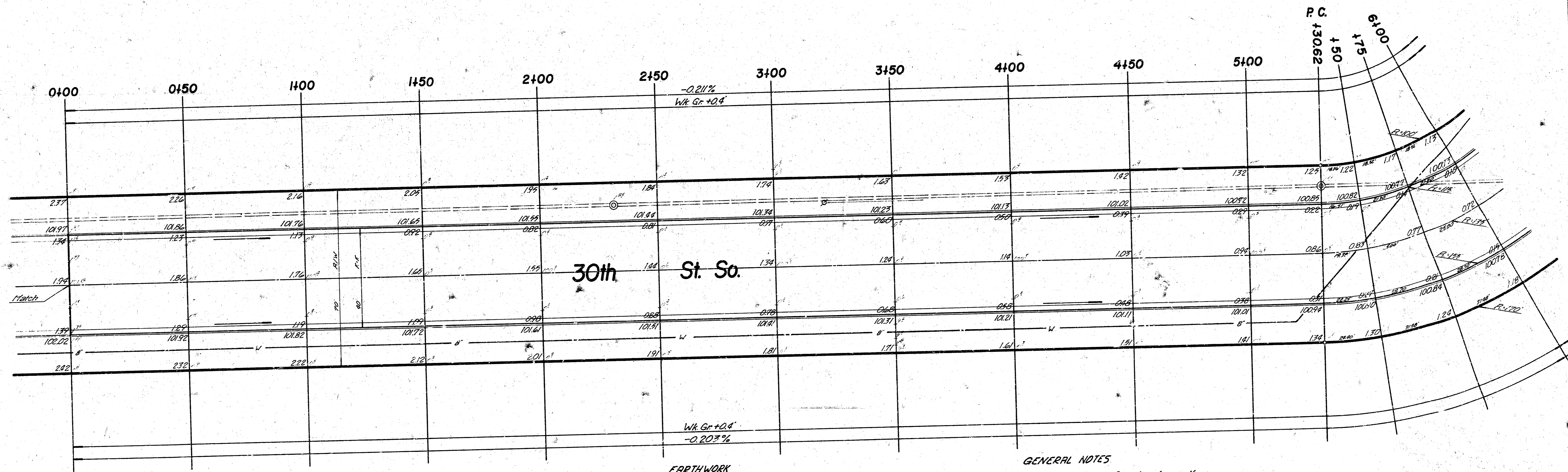
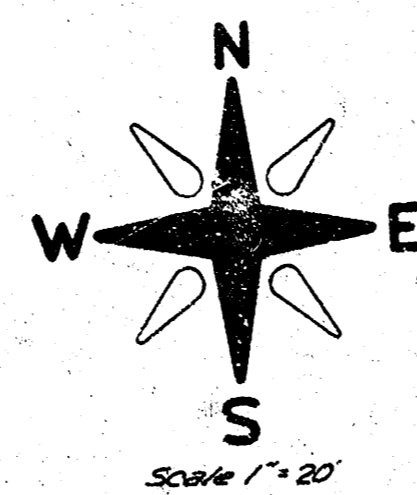


CITY OF WICHITA, KANSAS  
 DEPARTMENT of PUBLIC WORKS - Engineering Division  
 R. W. LINN CITY ENGINEER  
 DATE \_\_\_\_\_ Proj. No. \_\_\_\_\_



**FILMED FROM THE BEST AVAILABLE COPY.....**

B.M. 103.47 City Sid. 53° E. & 44' S. of Q. West St. & 31st St. So.  
 B.M. 103.77 R.R. Spk. E.S. Pole W.S. West St. 75' N. of N.L. 29th St.  
 @ 15' P.C.



Surveyed by: B.N. 2/24/72  
 Plan: B.N. 2/24/72  
 E.C. Checked  
 C. Checked

30th St. So.

**EARTHWORK**

	Property	City
Excavation	6099.5	218.0
+10%	610.0	21.8
Total	6709.5 C.Y.	239.8 C.Y.
Comp. Fill	0.0	0.0
Manipulation	11,281.0 S.Y.	228.0 S.Y.

- GENERAL NOTES**
1. Paving Contractor to Coordinate Construction with Drainage Contractor.
  2. Contractor to Contact Utility Companies for Location of any Underground Lines.
  3. No More than 4-70 Ft. Drives or the Equivalent May be Charged to this Project.

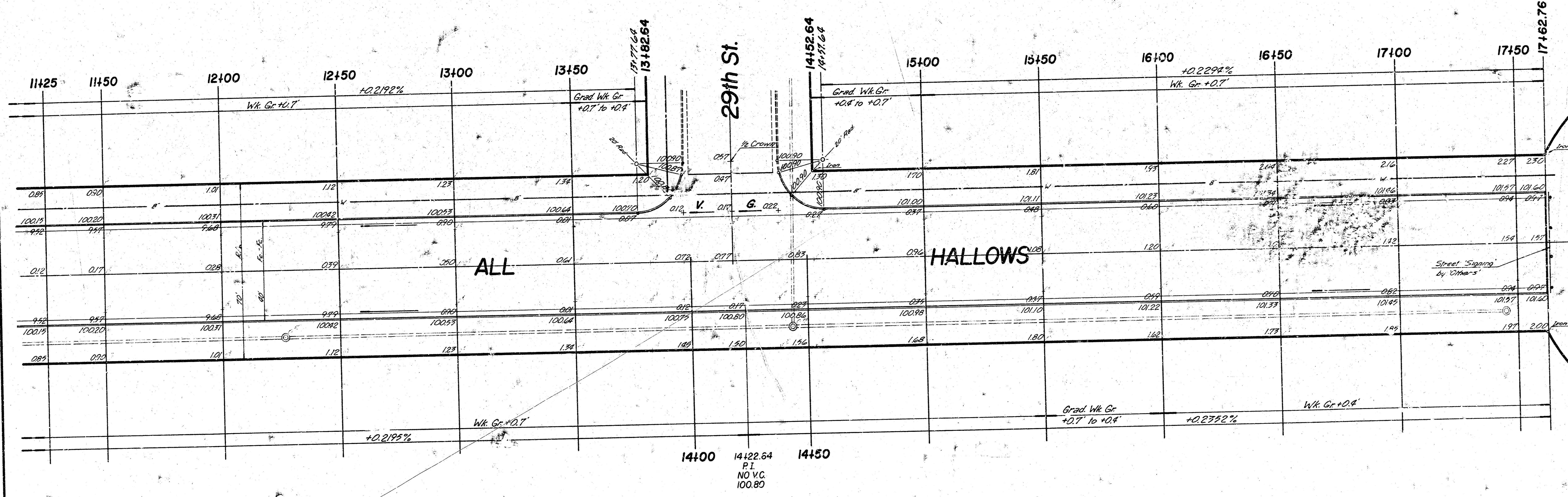
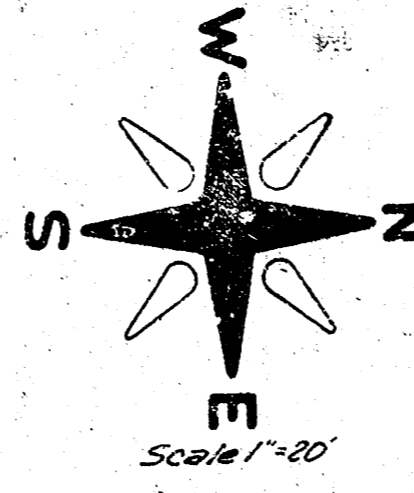
**SUB-GRADE**  
 TYPE OF SUB-GRADE TREATMENT SHALL BE DETERMINED BY THE FIELD ENGINEER. SUB-GRADE TREATMENT MAY CONSIST OF LIVE TREATMENT, CEMENT TREATMENT, SUB-GRADE MODIFICATION, OR ANY COMBINATION OF THESE.

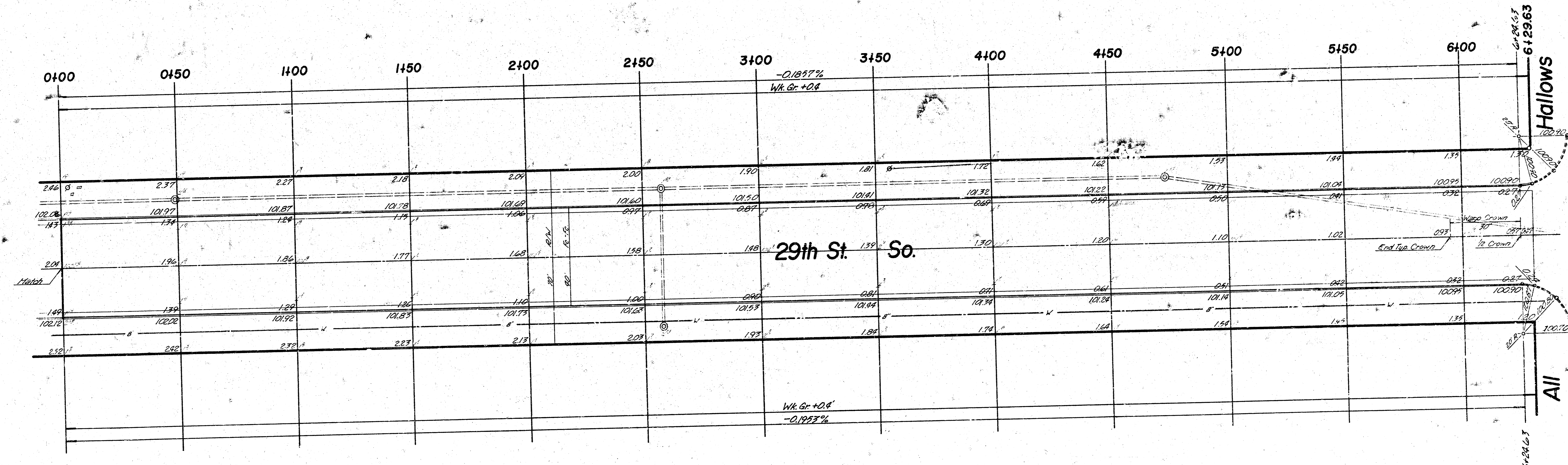
30th & All Hollows  
 E.L. Lot 6, Bk. 1, Kessler's Sub-  
 310.12' No. of N.L. 29th St. So.

3/5

**FILMED FROM THE BEST AVAILABLE COPY .....**







29th St. So.  
E. L. Lot 3, Blk. 2, Kessler-Koch  
Addition - W.L. All Hallows  
DAKS575096  
472-76-245-80338-000-000-001

FILMED FROM THE BEST  
AVAILABLE COPY.....