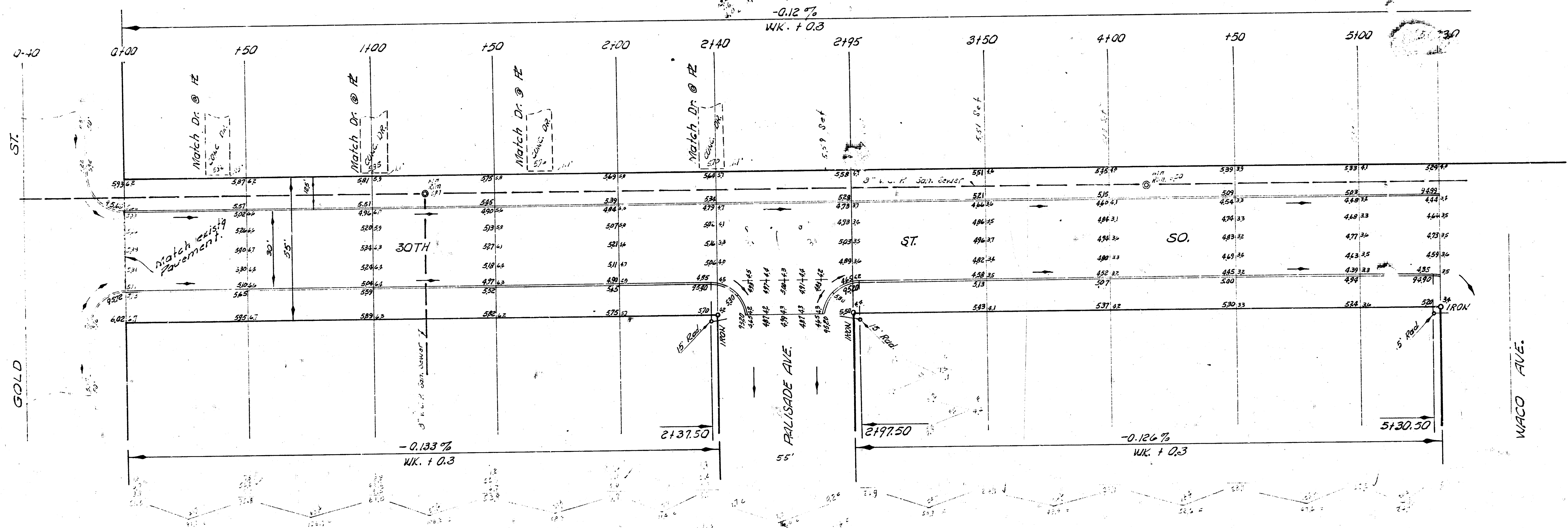


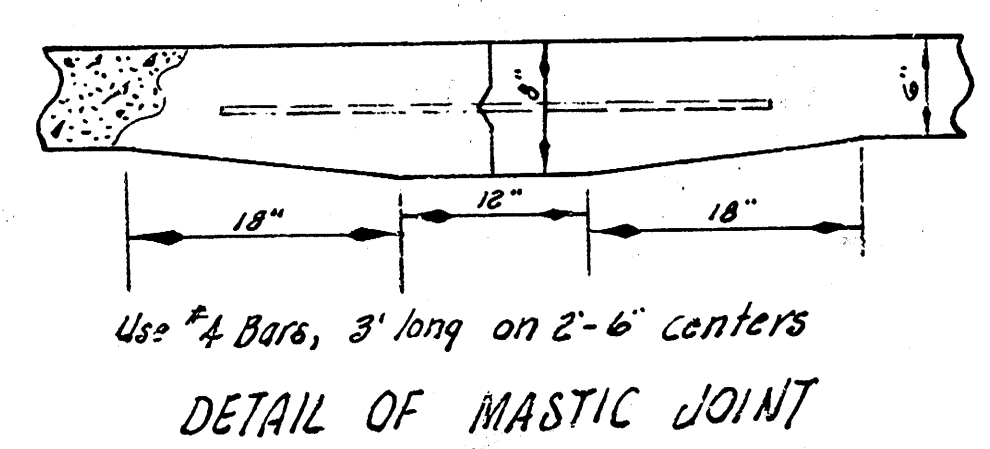
B.M. 94.84 "R" in Ritchie Top ab ES. Gold & SL 3187. ST.  
 B.M. 98.09 SE cor. conc. P.O. Ho # 3035 S. Gold.  
 Stationing & Base line on S. E. Chain E.

SCALE 1" = 20'

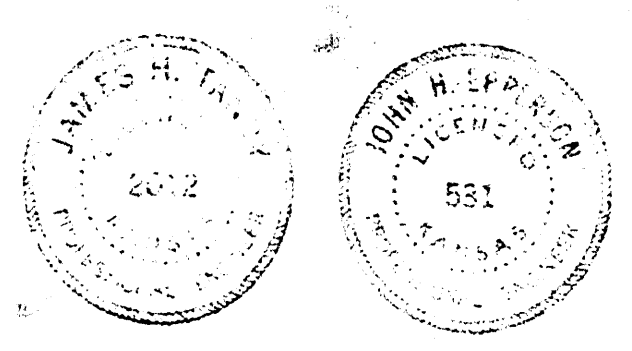


EARTH WORK

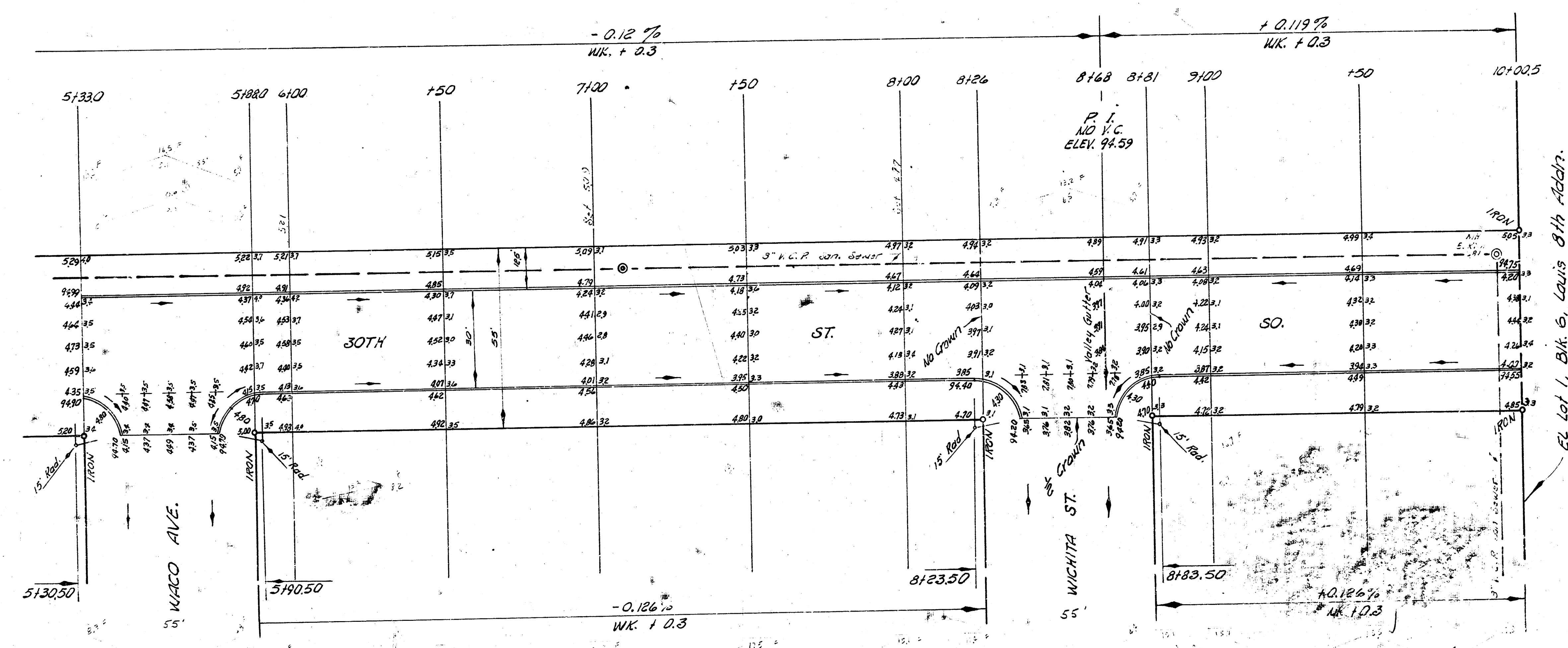
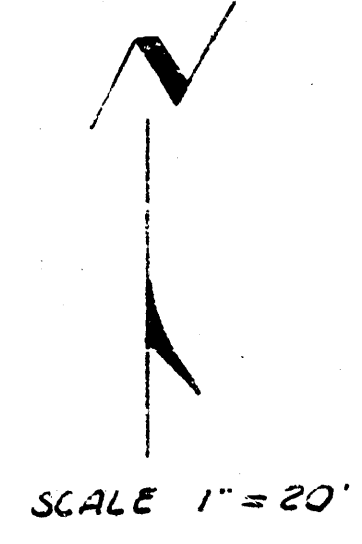
Excavation		Fill Compaction		
City	Prop.	City	Prop.	cu. Yds.
4.0	403.0	5.4	511.3	
.03	40.3	5.1	51.1	
4.4	443.3	59.8	562.4	



NOTE:  
 Use mastic joint from  
 Sta. 0+00 to Sta. 13+00.5



30TH. ST. SO.  
 EL GOLD TO EL 1ST I, BLK. 6, LOUIS 8TH ADDN.  
 30' CONC. & C.B.  
 CITY OF WICHITA, KANSAS  
 B. E. SMITH CITY ENGINEER  
 NOV. 1958, PROJ. NO. C13-11



30TH ST. SO.  
GOLD TO EL LOT 1, BLK. G

2/2

PROJ. NO C18-11