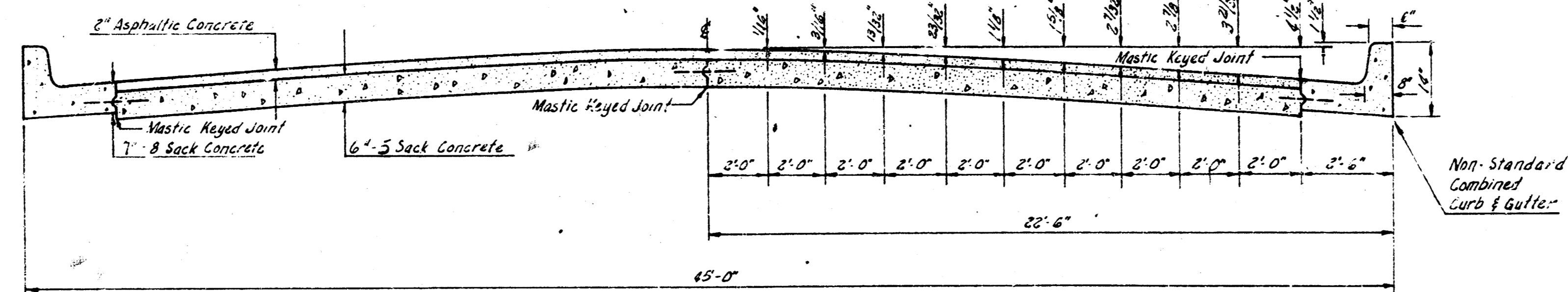
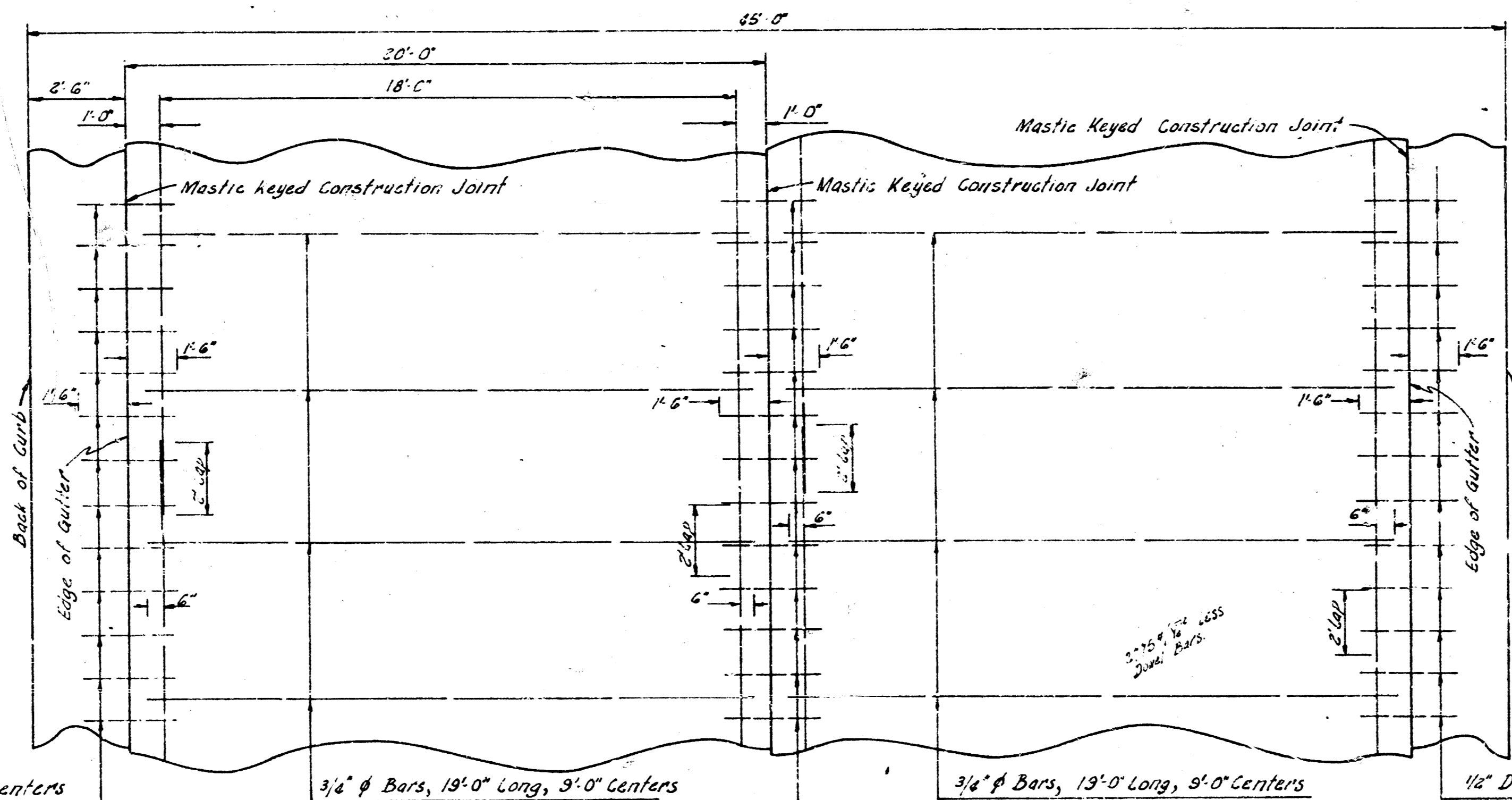


31ST. ST. SO.
 E.L. SHERIDAN AVE. TO W.L. MERIDIAN AVE.
 26-2-30 A. C. WIDEN TO 44 FEET
 PROJECT NO. C15-108 & C16-73
 C15-109 & C16-74



TYPICAL SECTION
 NOT TO SCALE



STEEL PATTERN
 NOT TO SCALE
 USE 3/4" O BARS EXCEPT WHERE NOTED

1/2" # Dowel Bars, 3'-0" Long, 2'-6" Centers

3/4" # Bars, 19'-0" Long, 9'-0" Centers

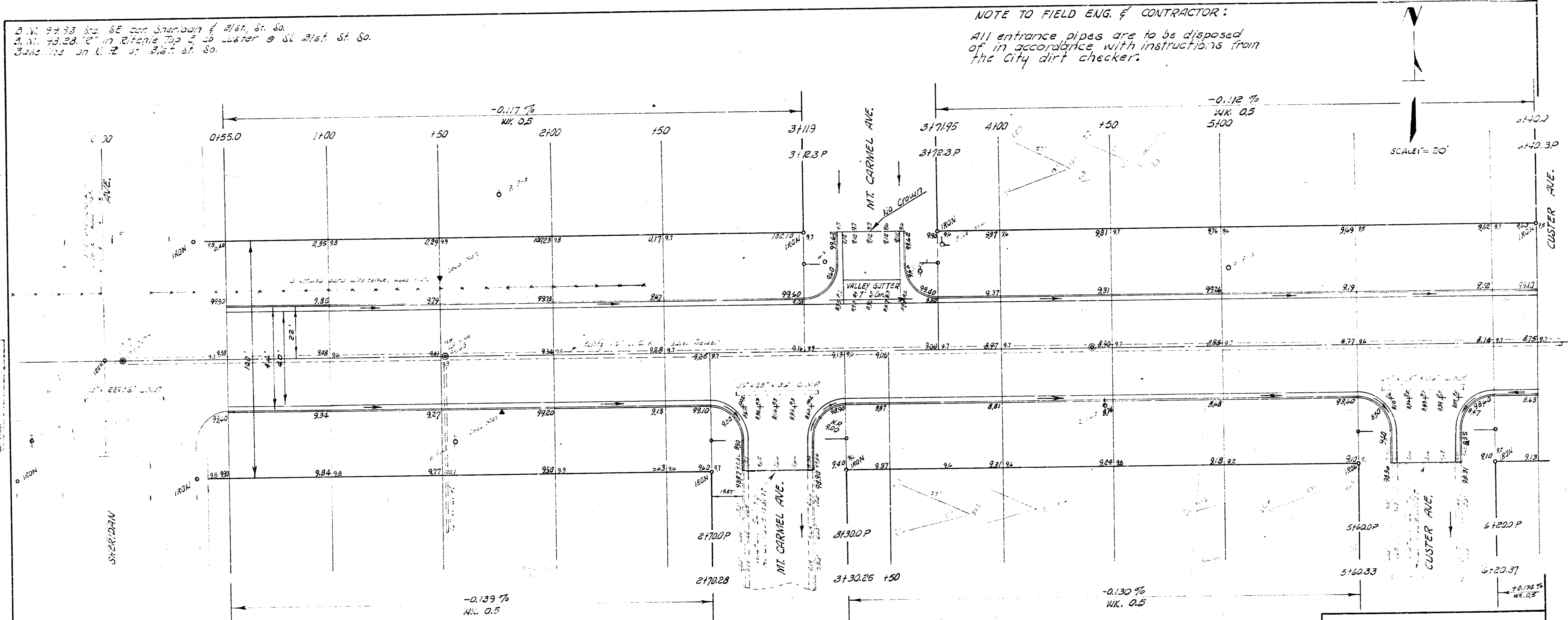
3/4" # Bars, 13'-0" Long, 9'-0" Centers

1/2" # Dowel Bars, 3'-0" Long, 2'-6" Centers



31st St. SO. SE cor. Sheridan & 31st St. So.
 31st St. SO. in Riforma Top & to Water @ 31st St. So.
 31st St. SO. in Riforma Top & to Water @ 31st St. So.

NOTE TO FIELD ENG. & CONTRACTOR:
 All entrance pipes are to be disposed
 of in accordance with instructions from
 the City dirt checker.



31ST ST. SO.

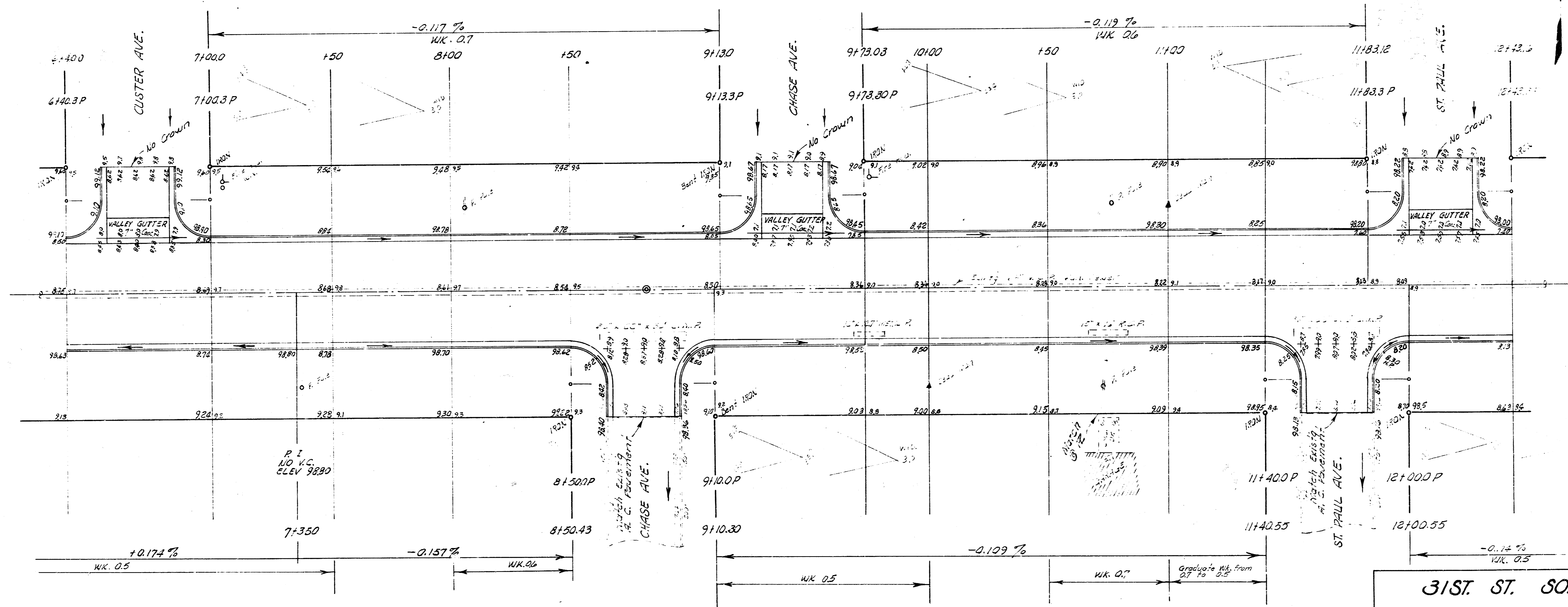
EL SHERIDAN TO EL MERIDIAN
 26'-2'-30" A.C.
 WIDEN TO 44' - 6" BASE
 CITY OF WICHITA, KANSAS
 B. E. SMITH CITY ENGINEER
 JUNE 1959, PROJ. NO. C15-103/C16-77
 C15-103/C16-77

PROPERTY		EARTH WORK CITY		WIDENING	
Excavation	Fill (Compaction)	Excavation	Fill (Compaction)	Excavation	Fill (Compaction)
5095.2	7.2	1400.8	0.0	1399.8	4.6
509.5	0.7	140.1	0.0	140.0	4.2
5604.7 cu. yds.	7.9 cu. yds.	1540.9 cu. yds.	0.0	1539.4 cu. yds.	4.5 cu. yds.

TIES TO IRON
 At E. 31st St. & Sheridan
 48.00' S. 1/4' to Iron on NE side Ball Bldg.
 60.41' S. E. to Iron on curb city block 31st St. & E. cor. 31st St. & Sheridan.
 64.08' NE to Iron on NE 31st St. & EL Sheridan.



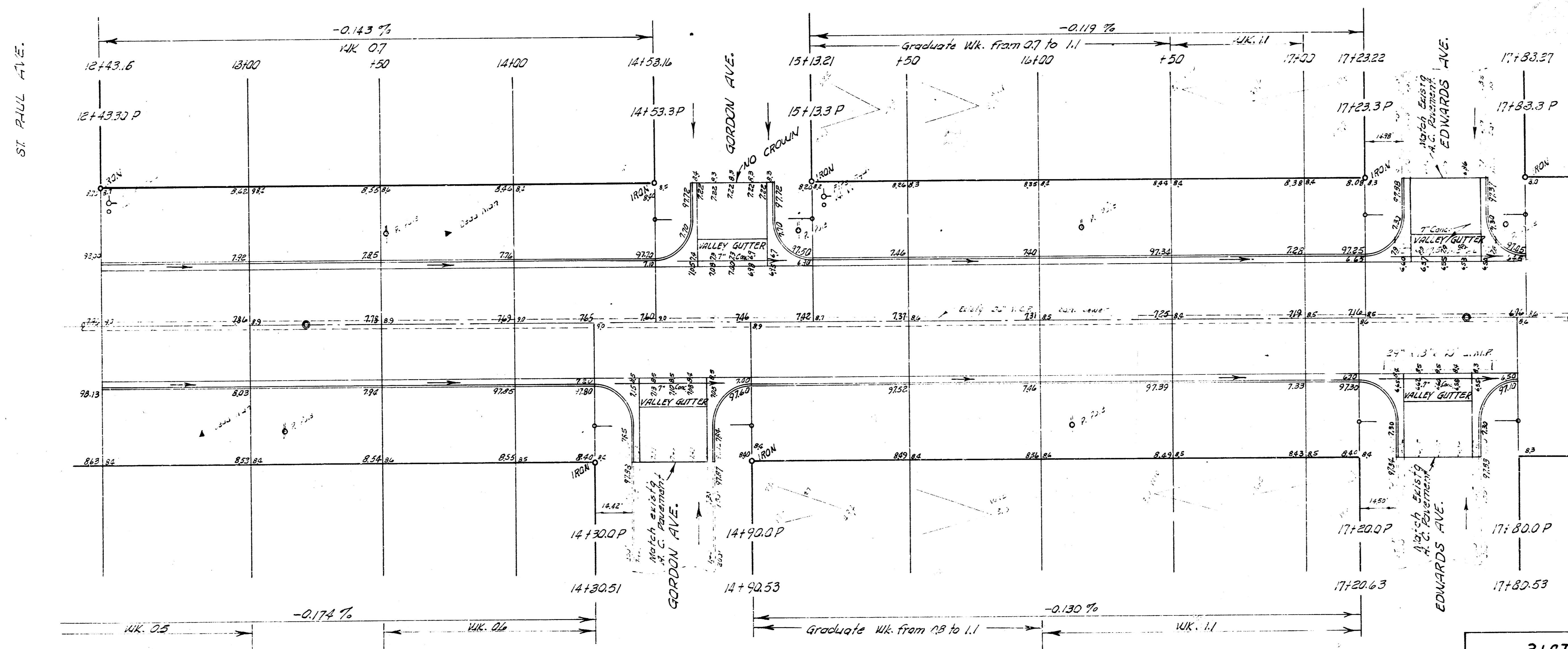
B.M. 100.04 NW cor. conc. Step No # 2909 31st St So.



31ST ST. SO.

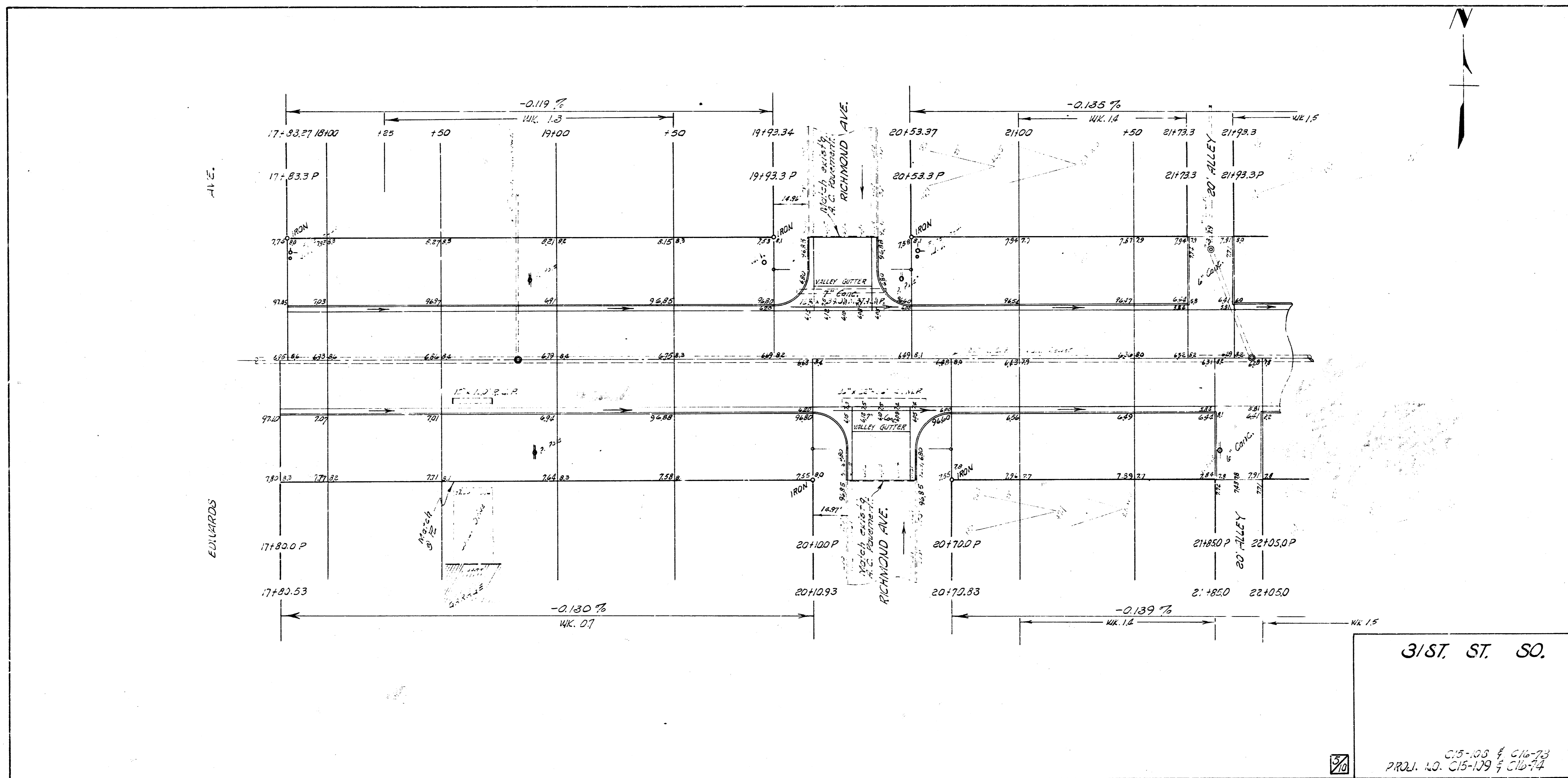
2/10
PROJ. NO. 10-39701-10

B.M. 99.89 R.R. Spike S.S. + L.P. 4.5 1st St. So. 100' W of Gordon S.
 B.M. 99.90 NE cor. Bottom conc. step No # 2617 31st St. So.




31ST. ST. SO.

C15-103 / C16-73
 PROJ. NO. C15-109 / C16-74



3/ST. ST. SO.

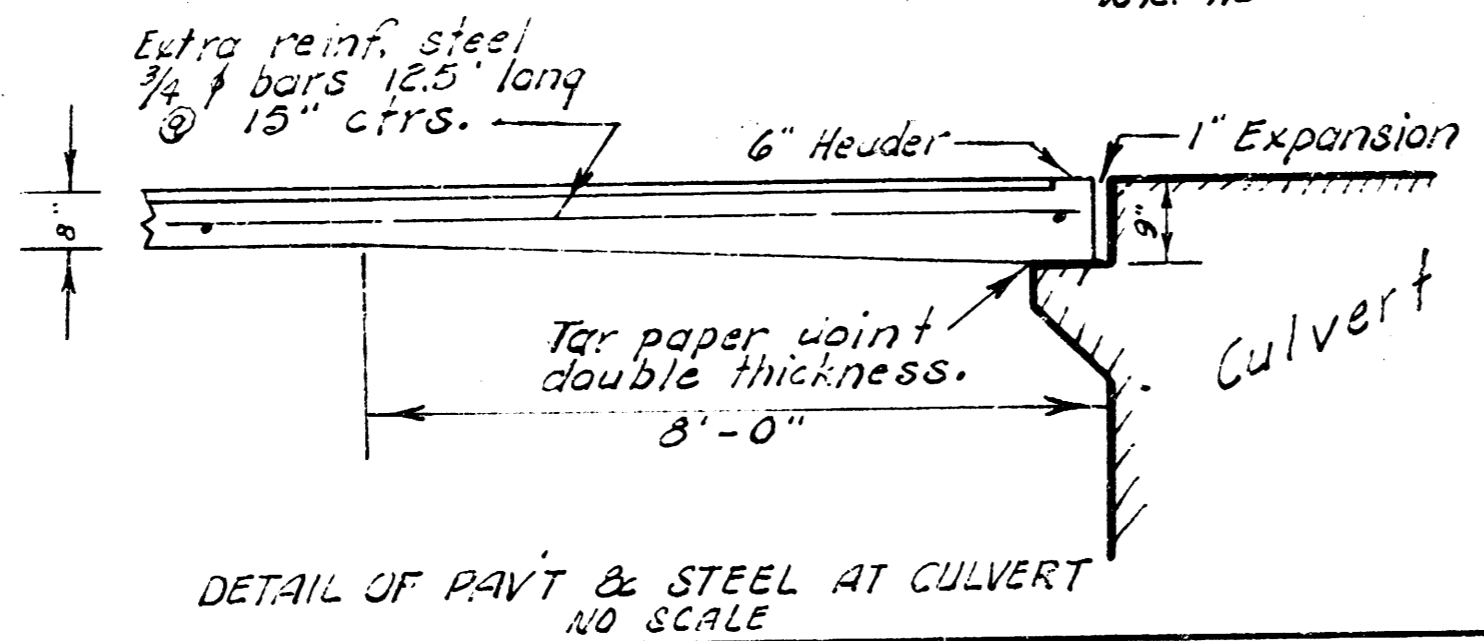
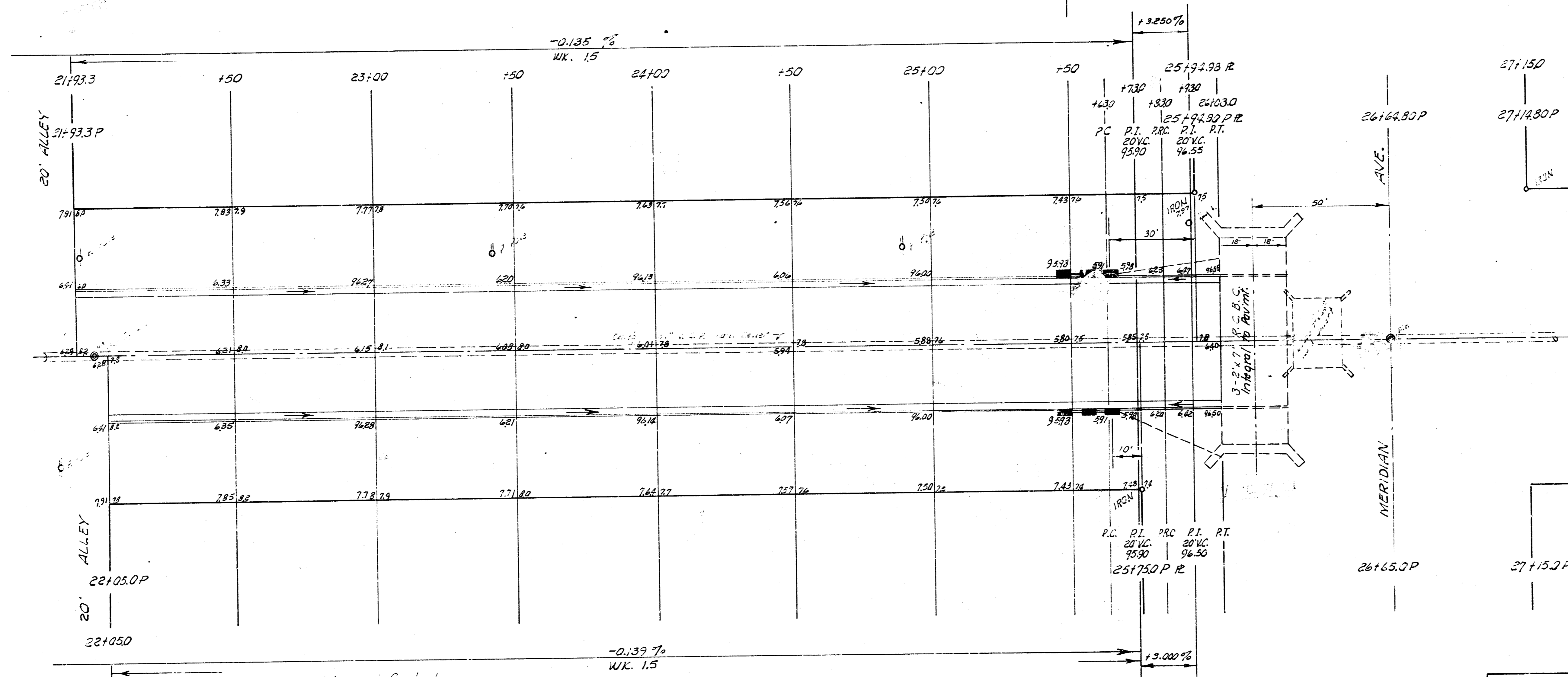


 C15-03 & C16-73
 PROJ. NO. C15-109 & C16-74

B.M. 27+05 3rd SW cor 3rd St. So. & Meridian.

NOTE TO FIELD ENG. & CONTRACTOR:

Pavement east of Sta. 25150 to be constructed after culvert is built.



TIES TO NAIL IN MANHOLE LID
 #1 @ 3rd St. So. & Meridian
 22.32' SW to tip. Bell in E end Hubward & S Wood Culvert.
 24.31' NW to tip. Bell in S end Hubward & S Wood Culvert.

3/ST. ST. SO.
 C/15-103 & C/16-73
 PROJ. NO. C/15-109 & C/16-74