

# 32nd STREET COURT

TO SERVE

## FACHNER ADDITION

CITY OF WICHITA, KANSAS

M.E. LINDEBAK CITY ENGINEER

**NOTE:**

Portions of the streets in this project to be constructed with roll-type curb. Top of curb elevations given are for full height curb.

**NOTES:**

1. CONTRACTOR WILL BE REQUIRED TO PROVIDE A MINIMUM ADVANCE NOTICE OF TWENTY-FOUR (24) HOURS TO UTILITY COMPANIES PRIOR TO STARTING ANY EXCAVATION AS FOLLOWS:

KANSAS ONE-CALL 687-2470

THE CONTRACTOR MUST NOTIFY THE FOLLOWING IN CASE OF AN EMERGENCY:

CABLEVISION	262-4270 OR 263-2061
K.P. & L. GAS SERVICE COMPANY	263-7511
KANSAS GAS & ELECTRIC	264-1141
ARKLA GAS COMPANY	942-8350 OR 263-8161
SOUTHWESTERN BELL TELEPHONE COMPANY	1-571-2611
CITY OF WICHITA WATER DEPARTMENT	268-4908
CITY OF WICHITA SEMER MAINTENANCE	268-4071

2. INTERURBAN TRAFFIC GENERATED OUTSIDE THE PROJECT AREA IS NOT TO BE CARRIED THROUGH CONSTRUCTION.

3. A SAW CUT OF AT LEAST ONE-HALF THE DEPTH OF EXISTING SURFACE COURSES OR ONE-FOURTH THE DEPTH OF THE EXISTING TOTAL PAVEMENT THICKNESS SHALL BE PROVIDED AT LOCATIONS WHERE PROPOSED CONSTRUCTION ADJUTS AN EXISTING SURFACE COURSE OR PAVEMENT FOR WHICH PARTIAL REMOVAL OF THAT SURFACE OR PAVEMENT IS REQUIRED. SAWS JOINT TO FACILITATE REMOVAL WITHIN THREE (3) FEET OF EXISTING JOINTS WILL NOT BE PERMITTED AND FOR SUCH INSTANCES THE LIMITS OF REMOVAL SHALL EXTEND TO THE EXISTING JOINT. SUCH SAW CUTS WILL NOT BE PAID FOR DIRECTLY AND THIS COST SHALL BE CONSIDERED AS SUBSIDIARY TO THE REMOVAL OF THE SURFACE OR PAVEMENT.

4. RUBBLE FROM THE REMOVAL OF MISCELLANEOUS STRUCTURES AND EXCESS EXCAVATION WHICH IS TO BE HASTED SHALL BE DISPOSED OF ON SITES TO BE PROVIDED BY THE CONTRACTOR. THESE SITES SHALL BE APPROVED BY THE ENGINEER AS TO SUITABILITY, APPEARANCE AND SITE LOCATION. LOCATIONS THAT, IN THE OPINION OF THE ENGINEER, WILL LEAVE AN UNSIGHTLY APPEARANCE WILL NOT BE APPROVED.

5. THIS PROJECT INCLUDES A CERTAIN AMOUNT OF ROLL TYPE CURB CONSTRUCTION. ROLL CURB SHALL BE DEPRESSED THROUGH ALL DRIVEWAY OPENINGS WHEN SUCH DRIVES ARE CONSTRUCTED AS A PART OF THE PROJECT. NO MORE THAN TWO (2) DRIVES TWENTY (20) FEET IN WIDTH OR EQUIVALENT COMBINATIONS THEREOF, ARE TO BE CONSTRUCTED WITH THIS PROJECT.

6. LIMITS OF EARTHWORK SHALL MATCH EXISTING GROUND ELEVATIONS AT THE RIGHT-OF-WAY LINE UNLESS OTHERWISE NOTED ON THE PLANS WITH A NEW FINISHED GRADE ELEVATION. WHEN A NEW FINISHED GRADE ELEVATION IS SHOWN, THE EARTHWORK SHALL EXTEND ONE FOOT BEYOND THE RIGHT-OF-WAY LINE AND THEN SLOPED UP OR DOWN USING PERMISSIBLE SLOPES TO MATCH THE EXISTING GROUND SURFACE.

7. THE CONTRACTOR SHALL BE RESPONSIBLE FOR PRESERVING PROPERTY IRONS. THE CONTRACTOR WILL BE REQUIRED TO RE-ESTABLISH ANY PROPERTY IRONS WHICH ARE DAMAGED OR DESTROYED BY HIS CONSTRUCTION OPERATIONS. SUCH IRONS SHALL BE RE-ESTABLISHED BY A LICENSED LAND SURVEYOR IN ACCORDANCE WITH STATE LAWS.

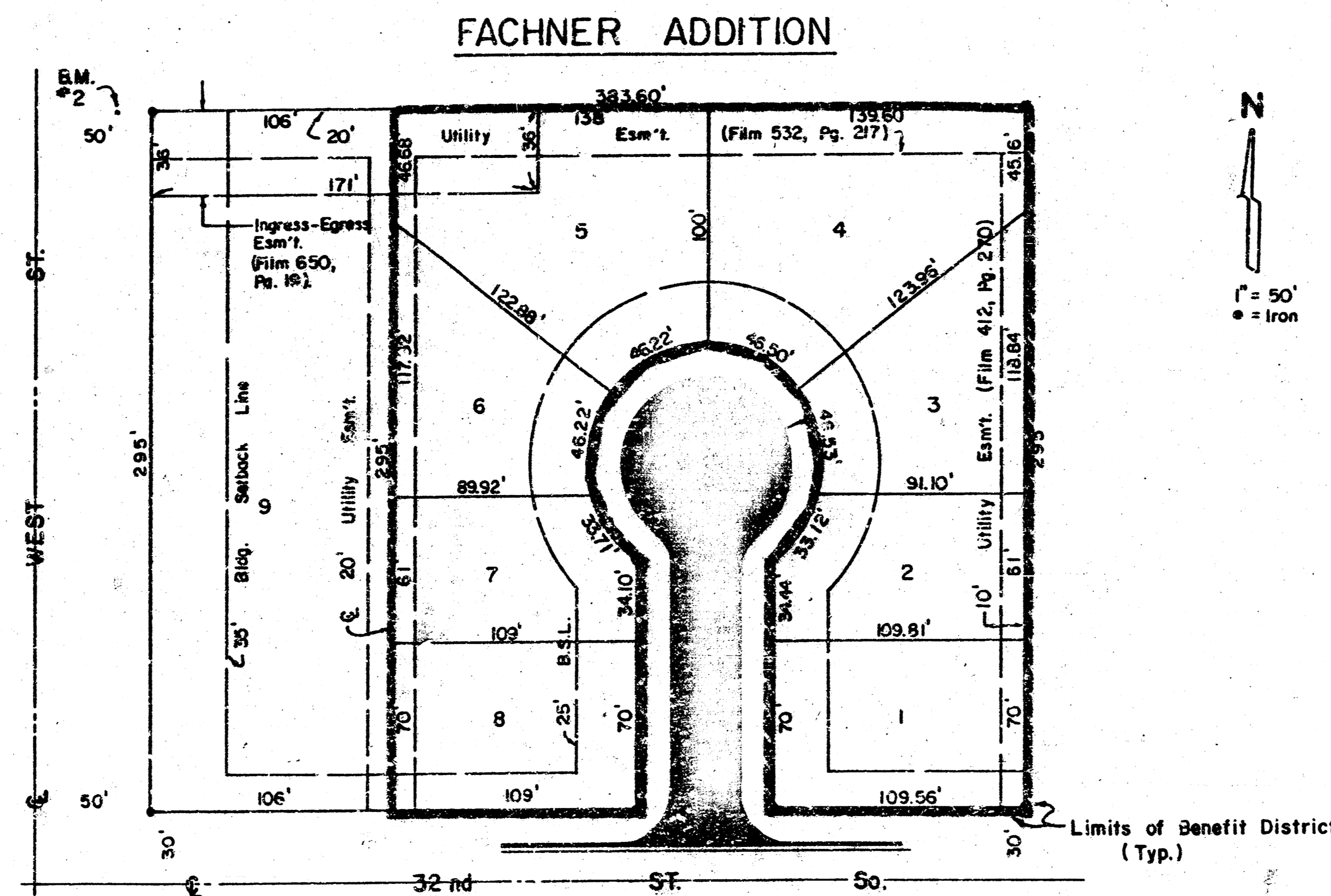
8. THE WATER DEPARTMENT SHALL FIELD LOCATE WATER VALVES ONE TIME DURING CONSTRUCTION WHEN REQUESTED BY THE CONTRACTOR. IT SHALL BE THE CONTRACTOR'S RESPONSIBILITY TO PRESERVE SUCH FIELD LOCATIONS DURING THE CONSTRUCTION PROCESS. WATER VALVES, WATER VALVE BOXES OR FIRE HYDRANTS DAMAGED DURING CONSTRUCTION SHALL BE REPAIRED BY THE CONTRACTOR AT HIS OWN EXPENSE.

9. THE CONTRACTOR SHALL GIVE ALL PROPERTY OWNERS AND/OR TENANTS OF DEVELOPED PROPERTY ADJUTING THE PROJECT LIMITS A MINIMUM OF TEN (10) DAYS ADVANCE NOTICE PRIOR TO START OF CONSTRUCTION.

CITY PROJECT NO. 472 - 76 - 245 - 81922 - 000 - 000 - 001  
INDEX NO. 760009

MAY, 1989

EARTHWORK QUANTITIES  
EXCAVATION = 345.0 C.Y.



Sheet No.	Description
1	Cover Sheet
2	Pavement Standards
3	Valley Gutter Details
4	32nd Street South Court Plans
5	Cross Sections

**BENCHMARKS:**

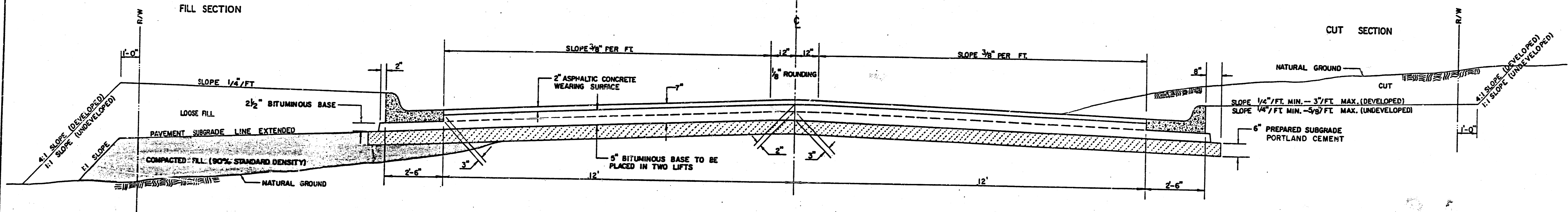
1. City Disc - SE Corner 31st & West St.  
Elev. = 103.47 City Datum
2. "□" on E. Curb West St., opposite NW Cor. Fachner Addition.  
Elev. = 102.33 City Datum

MOEHRING & ASSOCIATES  
CONSULTING ENGINEERS  
WICHITA

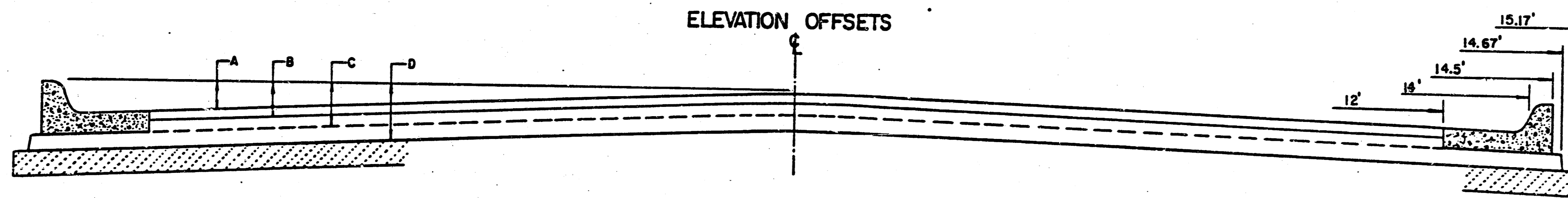
FILMED FROM THE BEST AVAILABLE COPY

# TYPICAL 29' PAVEMENT DETAILS

## TRANSVERSE SECTION

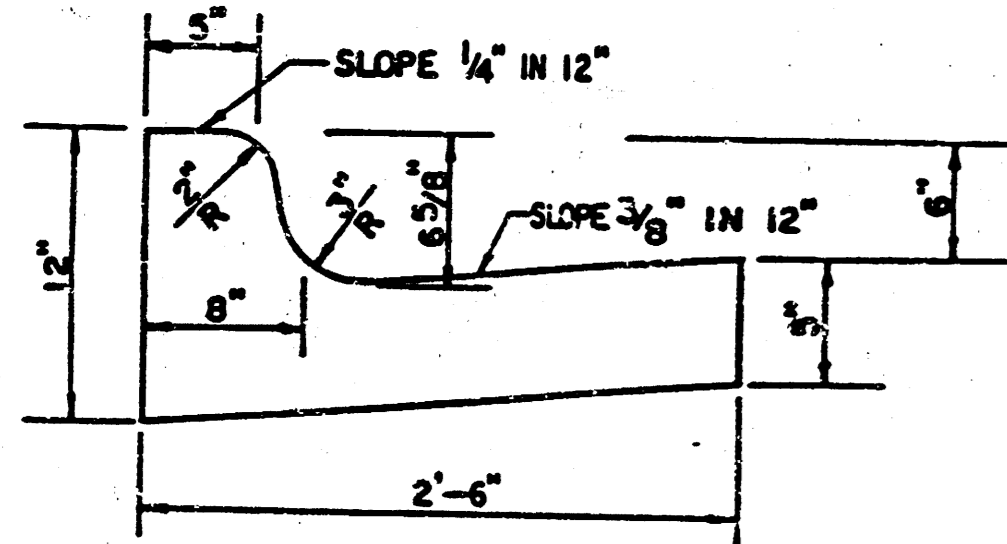


## ELEVATION OFFSETS

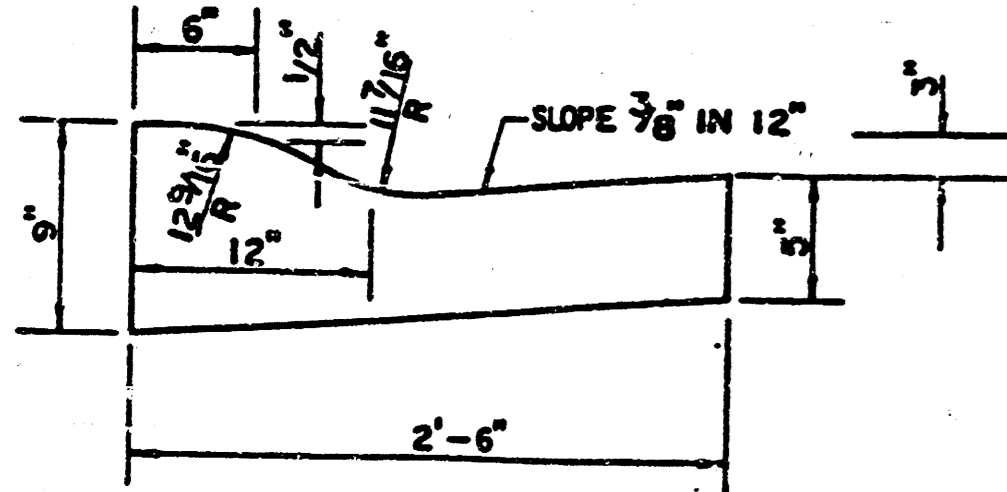


	DISTANCE FROM CENTERLINE (LT. & RT.)										
	0'	2'	4'	6'	7.5'	10'	12'	14'	14.5'	14.67'	15.17'
A: TOP OF CURBS TO TOP OF SURFACE LIFT	0.15	0.17	0.20	0.30	0.35	0.42	0.49	0.52	0.55	—	—
B: TOP OF CURBS TO TOP OF UPPER BASE LIFT	0.30	0.34	0.41	0.47	0.52	0.59	0.66	0.69	0.72	—	—
C: TOP OF CURBS TO TOP OF LOWER BASE LIFT	0.47	0.52	0.60	0.67	0.73	0.82	0.90	0.93	1.00	1.00	—
D: TOP OF CURBS TO TOP OF SUBGRADE	0.72	0.76	0.83	0.90	0.96	1.04	1.11	1.15	1.22	1.24	1.24

### COMBINED CURB & GUTTER



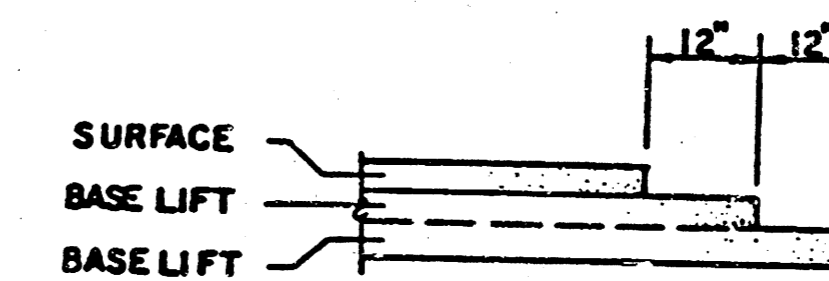
### ROLL TYPE COMBINED CURB & GUTTER



### GENERAL NOTES

- 1) THE ASPHALTIC CONCRETE PAVEMENT BETWEEN THE COMBINED CURB AND GUTTER SHALL BE PAID AS SQUARE YARDS OF 7" ASPHALTIC CONCRETE (5" BITUMINOUS BASE).
- 2) THE BITUMINOUS BASE UNDER AND BEHIND THE COMBINED CURB AND GUTTER SHALL BE PAID AS SQUARE YARDS OF 2 1/2" BITUMINOUS BASE.
- 3) A TACK COAT OF EMULSIFIED ASPHALT (SC-1H OR CSS-1H) SHALL BE APPLIED AT AN APPROXIMATE RATE OF 0.05 GALLONS PER SQUARE YARD BETWEEN EACH LIFT OF ASPHALTIC MATERIAL.
- 4) BITUMINOUS BASE AND ASPHALTIC CONCRETE WEARING SURFACE SHALL BE PLACED WITH A LAYDOWN MACHINE HAVING AUTOMATIC CONTROLS FOR LINE AND GRADE.
- 5) CONSTRUCTION JOINTS IN EACH LIFT SHALL BE STAGGERED A MINIMUM DISTANCE OF ONE (1) FOOT FROM JOINTS IN PRECEDING LIFTS AND PLACED SO THAT A JOINT WILL BE CONSTRUCTED ON THE CENTERLINE OF THE TOP LIFT.
- 6) CONTRACTOR TO BID ONLY ONE SUBGRADE TREATMENT ALTERNATE WHEN ALTERNATES ARE PROVIDED IN THE PROPOSAL AND CONTRACT. THE ALTERNATE CHOSEN BY THE SUCCESSFUL BIDDER SHALL BE USED IN CONSTRUCTING THIS PROJECT.

### TRANSVERSE CONSTRUCTION JOINTS



TRANSVERSE CONSTRUCTION JOINTS SHALL BE CONSTRUCTED IN FLEXIBLE BASE PAVEMENTS AT LOCATIONS WHERE PAVEMENT JOINS EXISTING FLEXIBLE BASE PAVEMENT AS SHOWN BY THE DETAIL. ALL COSTS ASSOCIATED WITH THE CONSTRUCTION OF THE TRANSVERSE JOINT SHALL BE INCLUDED IN THE BID PRICE FOR SQUARE YARDS 7" ASPHALTIC CONCRETE (5" BITUMINOUS BASE).

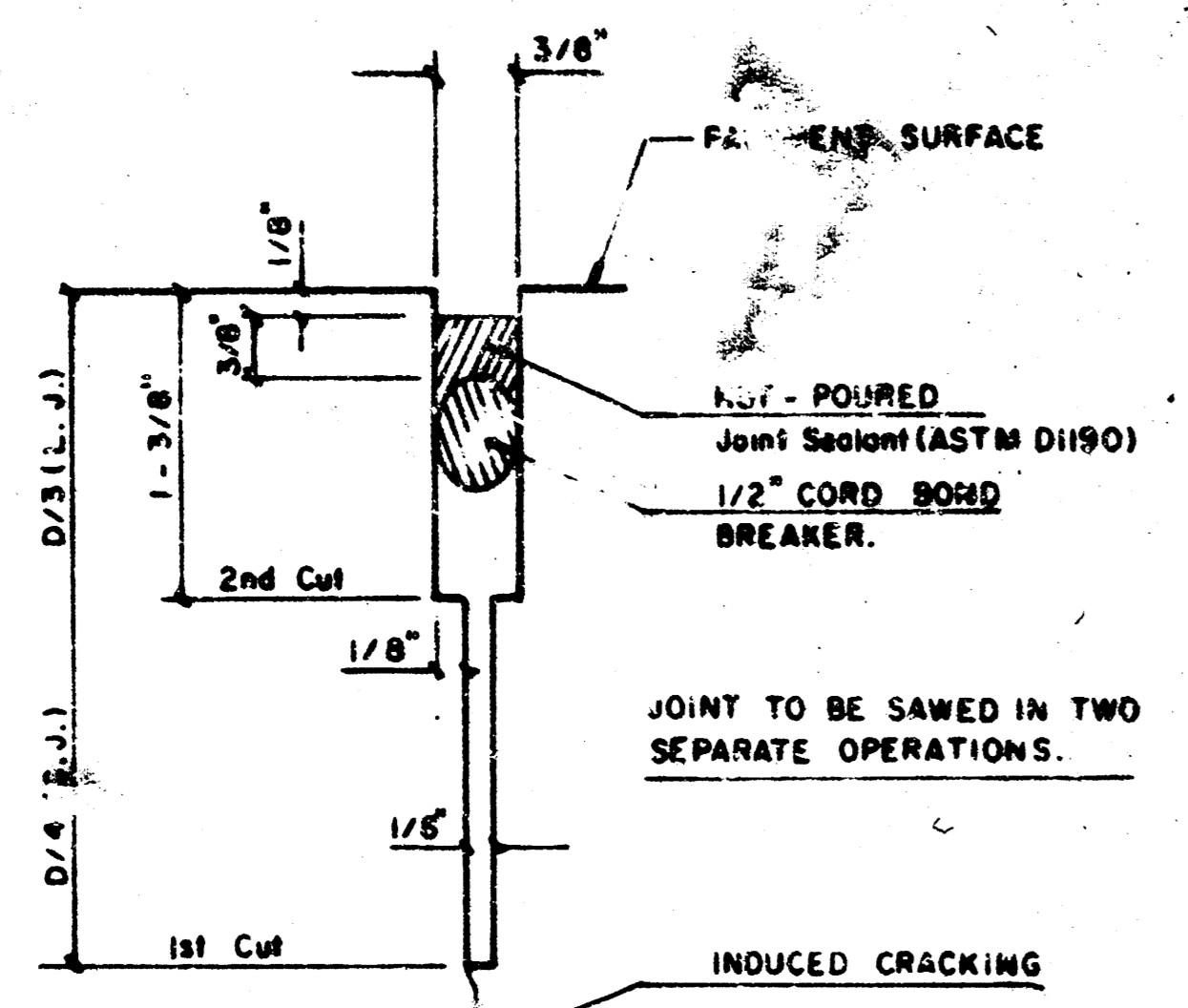
7 INCH RESIDENTIAL ASPHALTIC CONCRETE PAVEMENT WITH 5 INCH BITUMINOUS BASE

PROJECT NUMBER

2/5

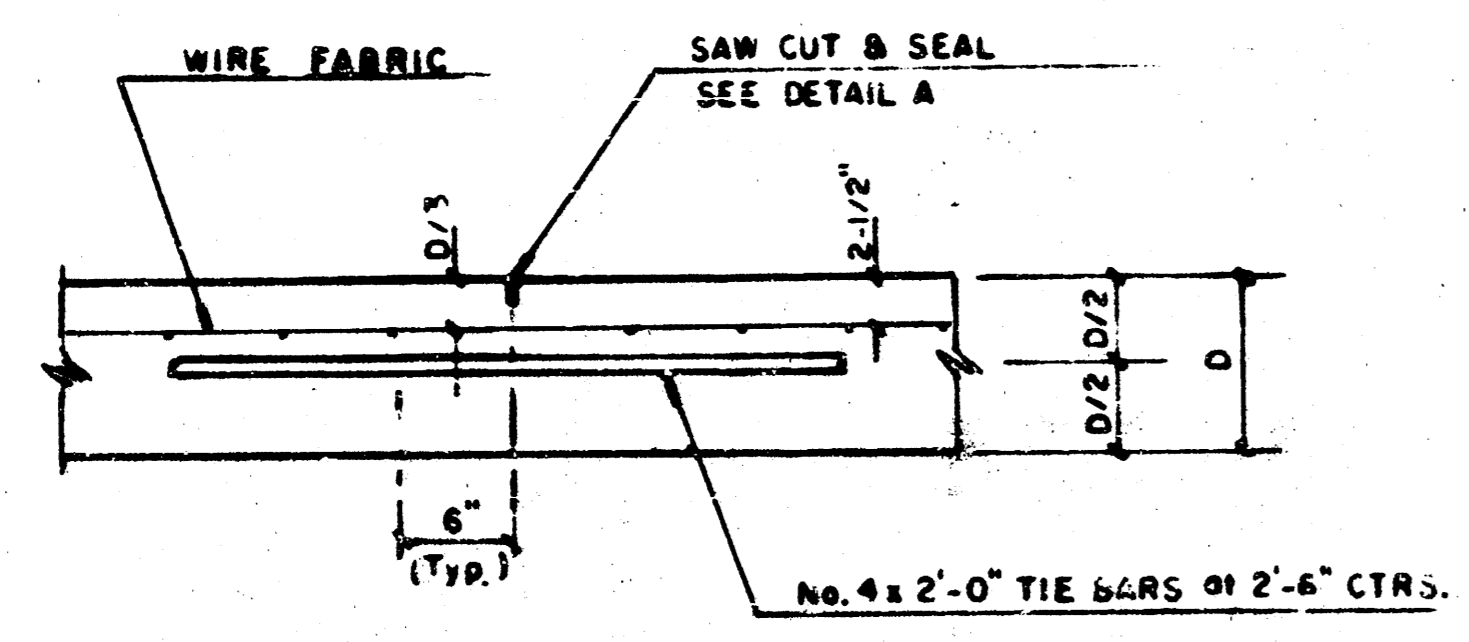
Sheet 2

FILMED FROM THE BEST AVAILABLE COPY

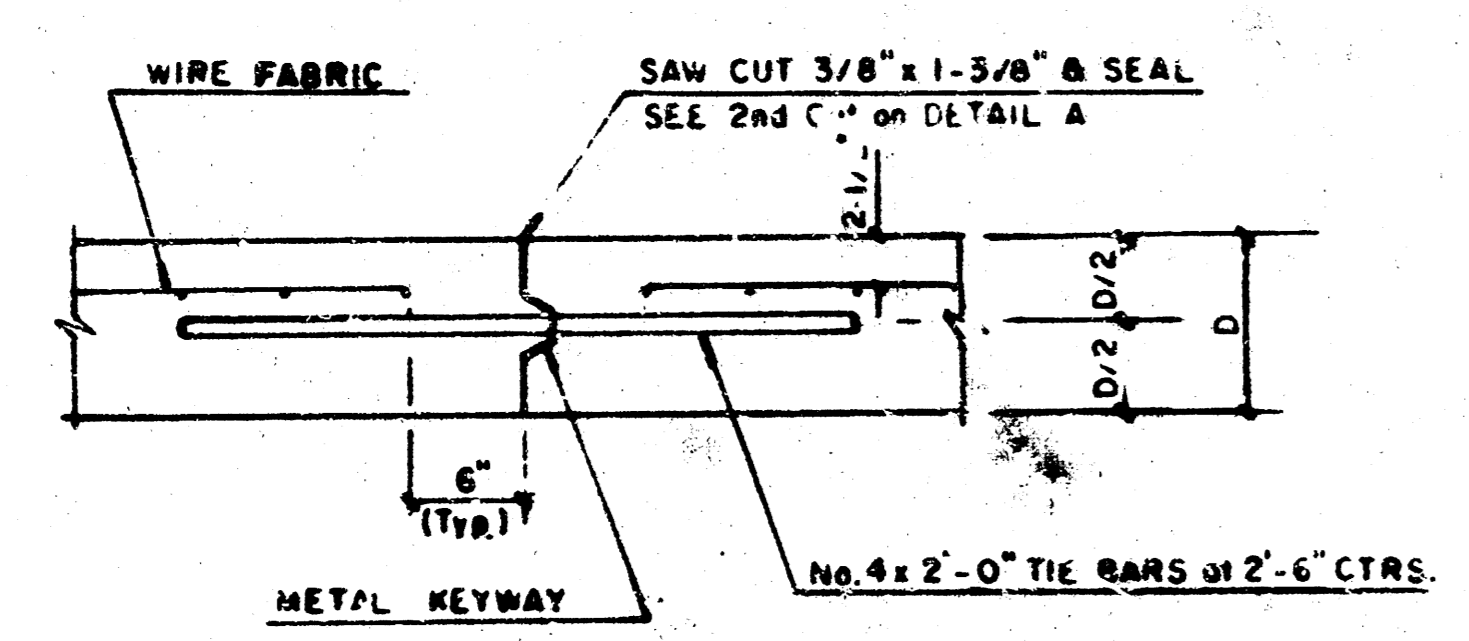


**DETAIL A**

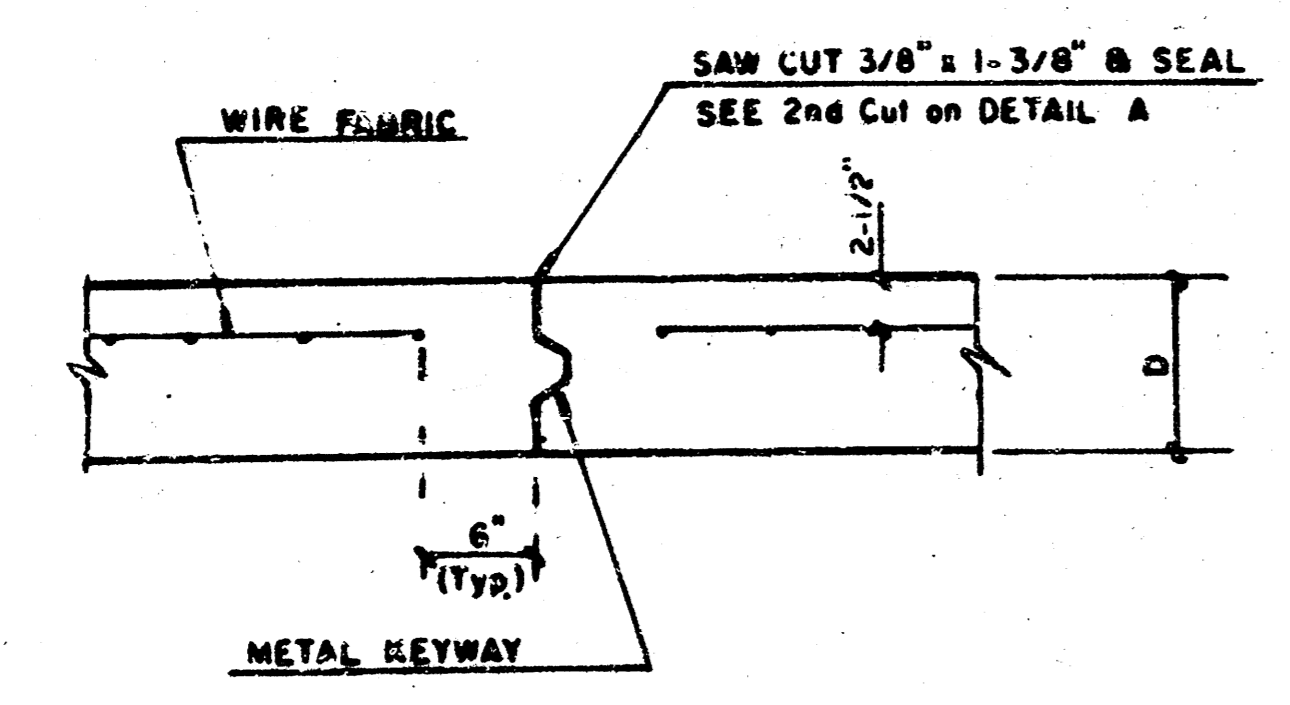
NOTE: ALL CONCRETE VALLEY GUTTER REINFORCEMENT SHALL BE ADEQUATELY SUPPORTED BY BAR CHAIRS IN THE REQUIRED POSITION UNLESS APPROVED OTHERWISE BY THE ENGINEER.



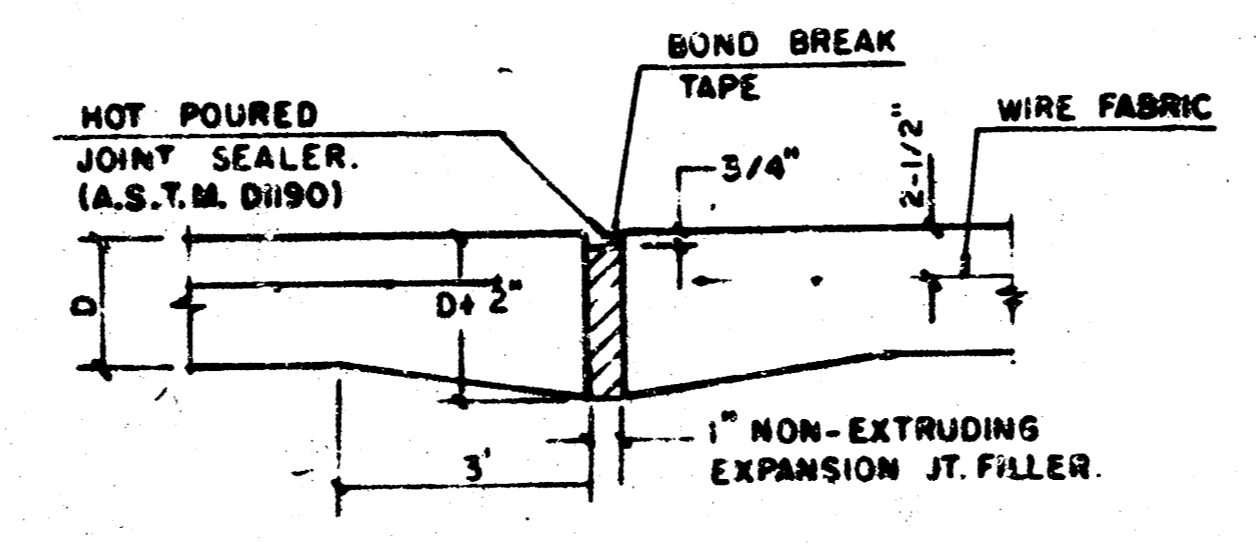
**LONGITUDINAL JOINT DETAIL (L.J.)**



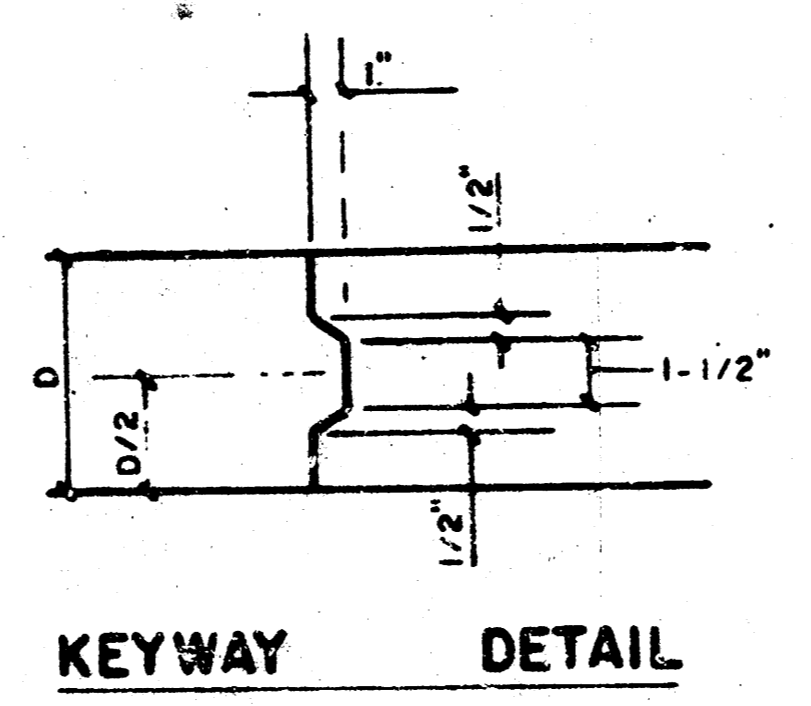
**OPTIONAL LONGITUDINAL CONSTRUCTION JOINT (L.J.) (Alternate L.J.)**



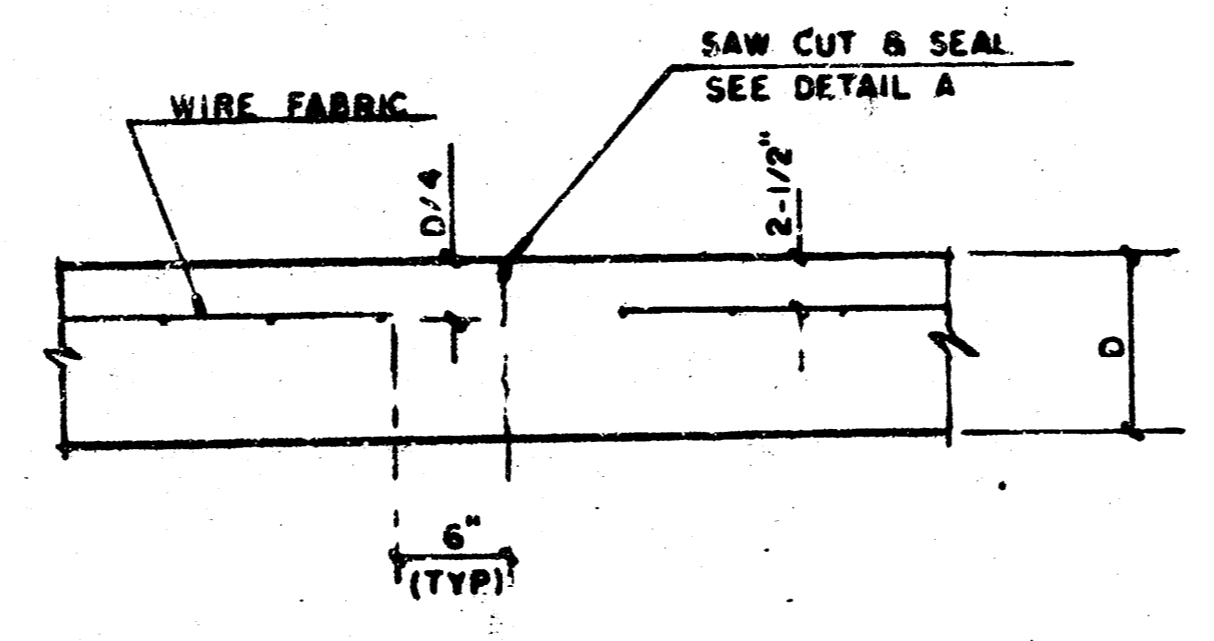
**OPTIONAL CONTRACTION CONSTRUCTION JOINT (C.J.) (Alternate C.J.)**



**EXPANSION JOINT**  
NOTE: EXTRA THICKNESS TO BE SUBSIDIARY TO PRICE OF 50 YDS PAVEMENT.

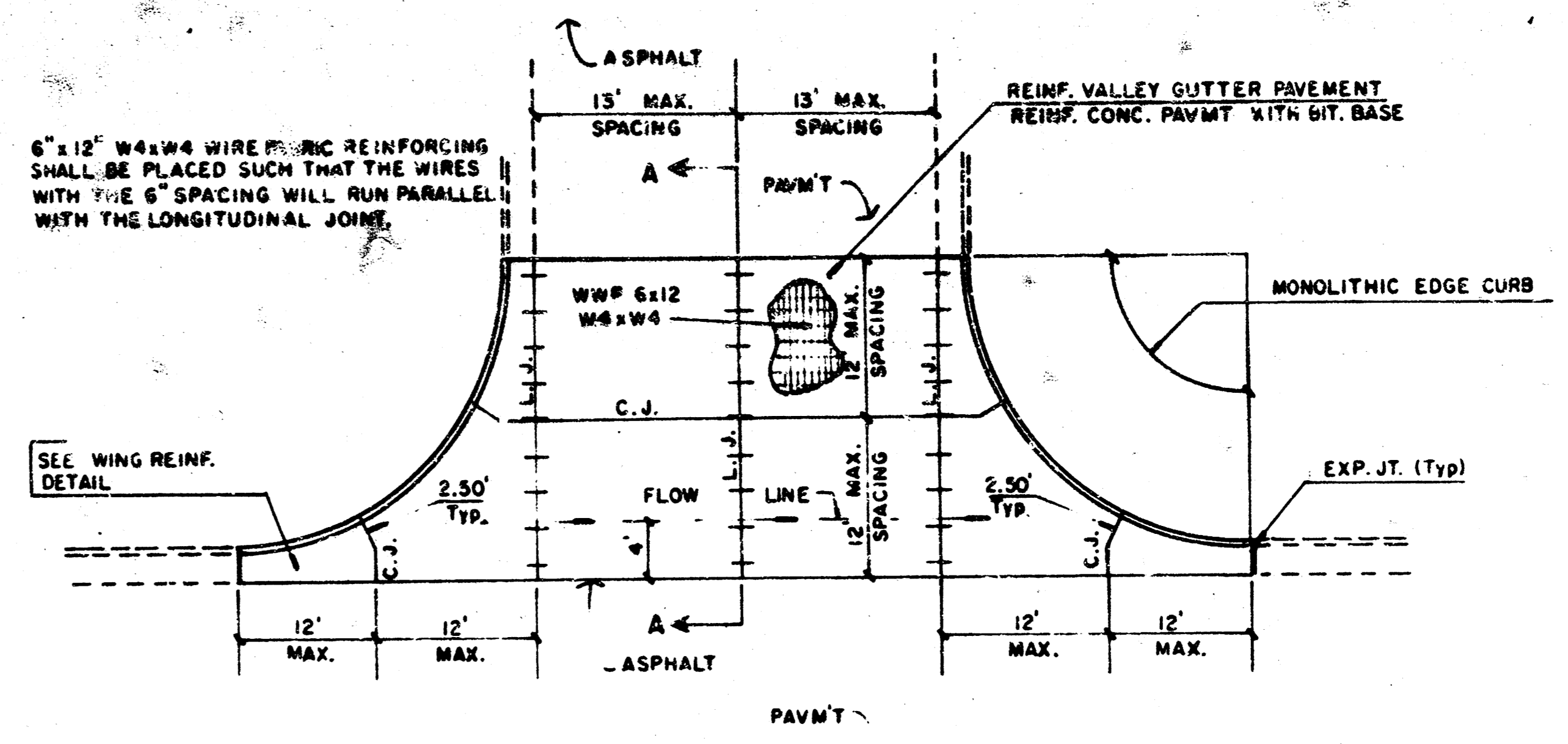


**KEYWAY DETAIL**

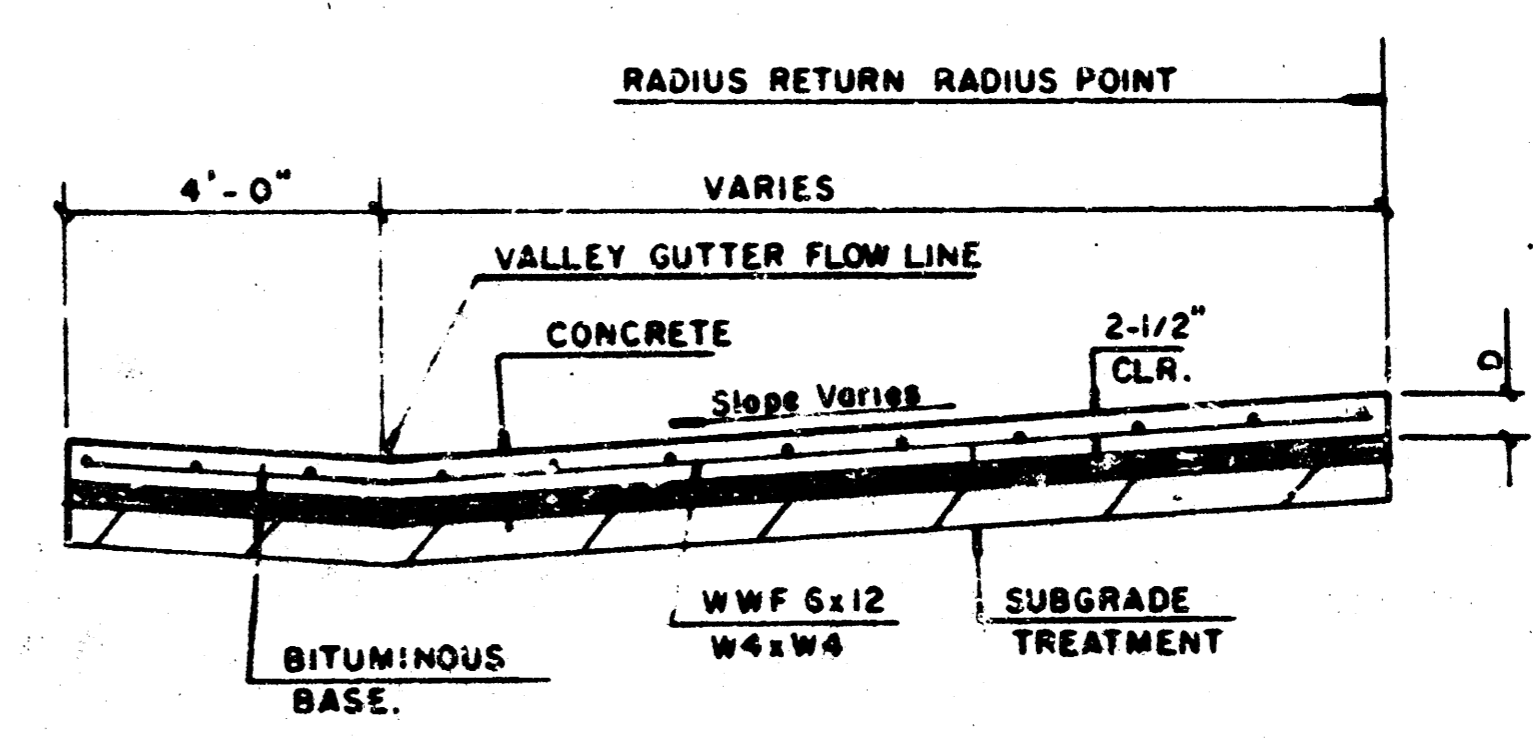


**CONTRACTION JOINT DETAIL (C.J.)**

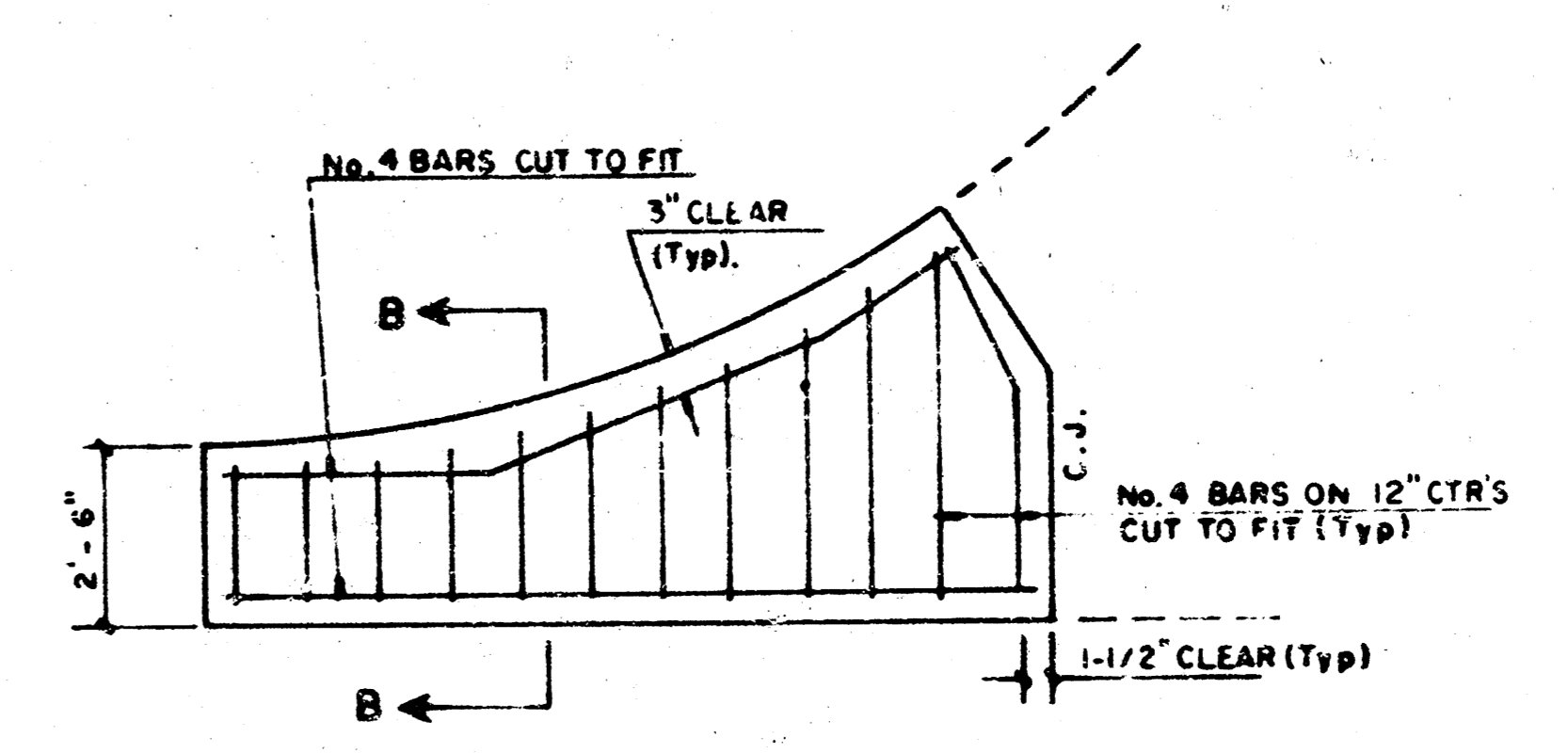
**LEGEND**  
C.J. IDENTIFIES CONTRACTION JOINT  
L.J. IDENTIFIES LONGITUDINAL JOINT



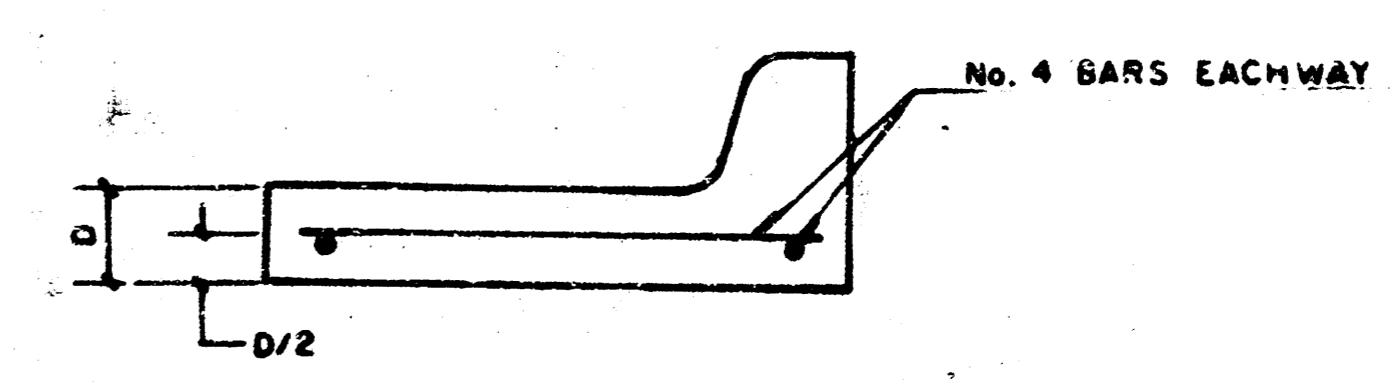
**PLAN**  
**REINFORCED VALLEY GUTTER**



**SECTION A-A**



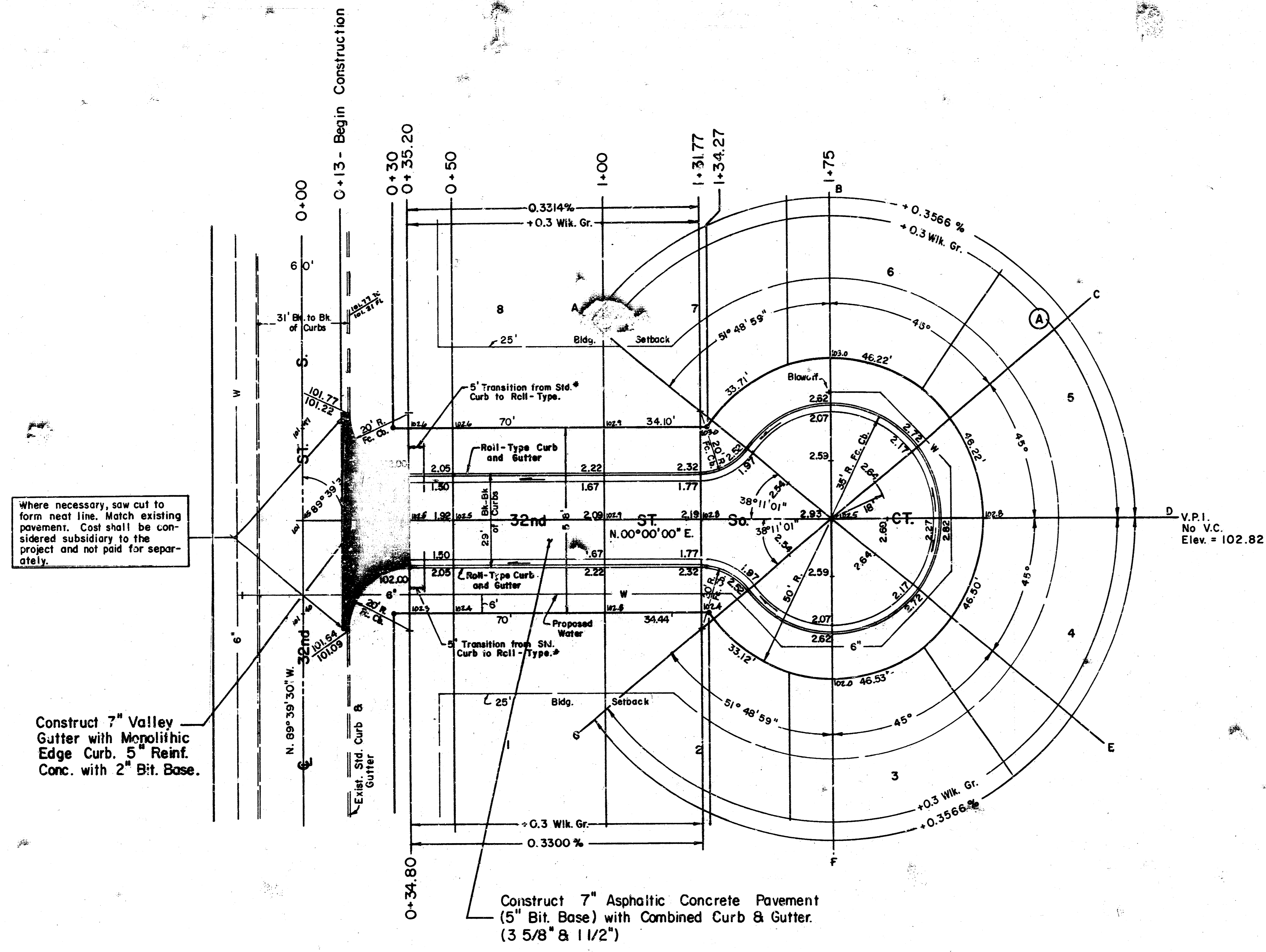
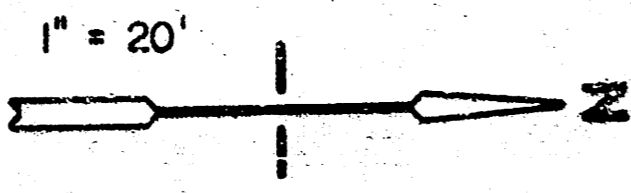
**WING REINFORCING DETAIL**



**SECTION B-B**

PROJECT DESCRIPTION  
**VALLEY GUTTER DETAILS**  
PROJECT NUMBER

FILMED FROM THE BEST AVAILABLE COPY



**INTERSECTION QUANTITIES**

- 99.86 S.Y. 7" Valley Gutter Pavement (5" Reinforced Concrete Pvm't w/2" Bit. Base)
- 62.83 L.F. Monolithic Edge Curb (6 5/8")
- 104.34 S.Y. Subgrade Stabilization Manipulation

\*NOTE: TRANSITION FROM STD. CURB TO ROLL-TYPE CURB SHALL BE PAID AS ROLL-TYPE CURB.

**WATER VALVE TABLE**

STREET	STATION	DISTANCE FROM		EXIST. ELEV.	PROPOSED ELEV.
		RT.	LT.		
32nd ST. SO. CT.	1	-	39.75	-	102.70

32nd Street South Court  
 From The N. Line of 32nd  
 Street South, North 195'  
 Proj. No. 472-76-245-81922-000-000-001  
 Index No. 760009

MOEHRING & ASSOCIATES  
 CONSULTING ENGINEERS  
 WICHITA  
 May, 1989 Sheet 4/5

**FILMED FROM THE BEST AVAILABLE COPY**

