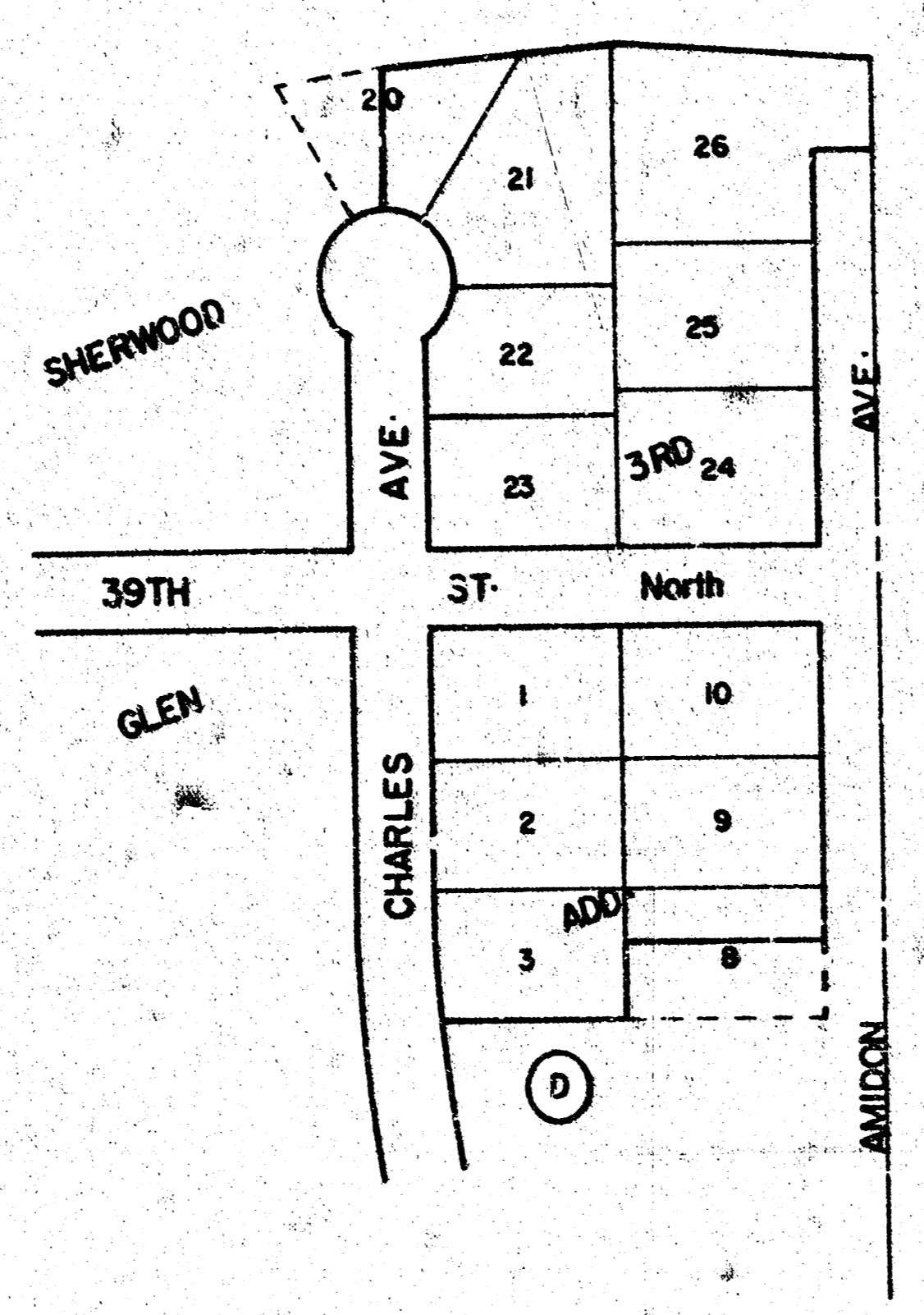


39TH ST NORTH
 N·L·CHARLES TO W·L·AMIDON

472-76-245-81228-000-000-001



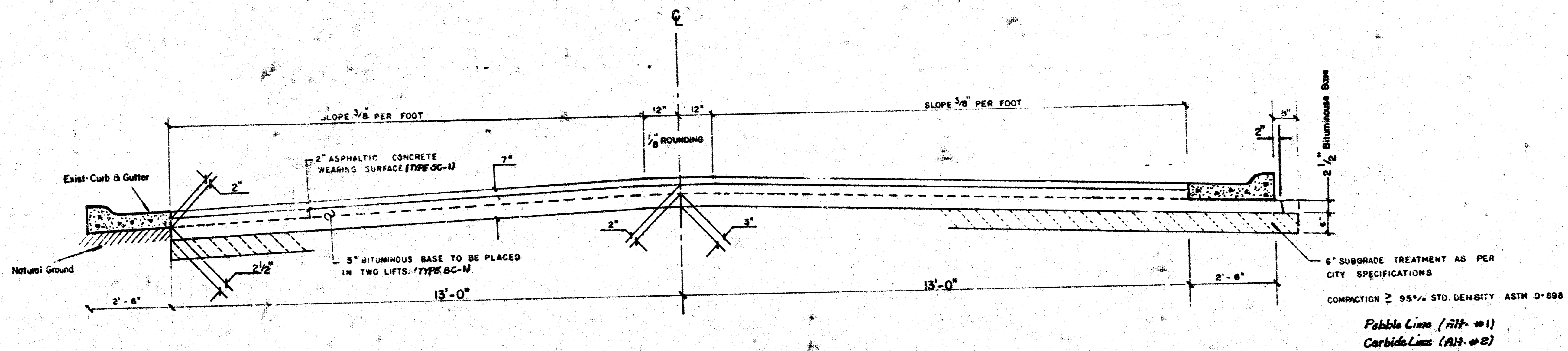
- GENERAL NOTES**
- (1) CONSTRUCT ROLL-TYPE CURB ON THIS PROJECT. NEW CURBS SHALL BE RECESSED THROUGH DRIVES WHEN DRIVES ARE CONSTRUCTED AS A PART OF THIS CONTRACT. NO MORE THAN 4 30-FOOT DRIVES ARE TO BE CONSTRUCTED WITHIN THIS PROJECT.
 - (2) PAVEMENT SHALL BE 7" ASPHALTIC CONCRETE (5" BITUMINOUS BASE AND 2" WEARING SURFACE).
 - (3) EARTHWORK TO MEET EXISTING GROUND ELEVATION AT RIGHT-OF-WAY LINE, UNLESS OTHERWISE NOTED ON THE PLAN WITH A NEW ELEVATION. IF A NEW ELEVATION IS SHOWN, THE EARTHWORK SHALL EXTEND ONE FOOT BEYOND RIGHT-OF-WAY LINE, THENCE UP OR DOWN ON A 1:1 SLOPE TO THE EXISTING GROUND SURFACE.
 - (4) RAILROADS WITHIN THE PROJECT LIMITS SHALL BE REMOVED AND REPLACED BY THE CONTRACTOR AS APPROVED BY THE ENGINEER. CONTRACTOR WILL BE REQUIRED TO MAKE SATISFACTORY PROVISIONS FOR RAIL DELIVERY TO PROPERTIES AFFECTED BY THIS PROJECT DURING CONSTRUCTION.
 - (5) ALL ENTRANCE AND CROSS ROAD DRAINAGE PIPES WITHIN THE PROJECT LIMITS SHALL BE REMOVED BY THE CONTRACTOR, UNLESS OTHERWISE NOTED ON THE PLANS. REMOVAL OF SUCH PIPES SHALL CONFORM TO THE APPLICABLE SECTIONS OF THE STANDARD SPECIFICATIONS.
 - (6) TREE REMOVAL SHALL BE DETERMINED BY THE ENGINEER. ANY TREE WHICH CAN BE SAVED SHALL BE SAVED.
 - (7) CONCRETE RUBBLE APPROACH TO DRIVES SHALL BE REMOVED. COST OF THIS REMOVAL WILL BE INCIDENTAL TO EXCAVATION.
 - (8) CONTRACTOR TO BID ONLY ONE SUB-GRADE TREATMENT ALTERNATE. ALTERNATE CHOSEN BY THE SUCCESSFUL BIDDER SHALL BE USED IN CONSTRUCTING THIS PROJECT.
 - (9) CONTRACTOR'S CONSTRUCTION METHODS SHALL BE THAT WHICH WILL PREVENT DAMAGE TO SPRINKLER SYSTEM BETWEEN STATION 1+20 AND 2+00 AND TO FENCE BETWEEN STATION 2+74 AND 3+97. THESE ITEMS ARE TO REMAIN IN PLACE SINCE THEY DO NOT CONFLICT WITH NEW CONSTRUCTION. INVOLVED PROPERTY OWNERS HAVE BEEN INFORMED THAT THEY WILL BE REQUIRED TO OBTAIN A MINOR STREET USE PERMIT IF THEY INTEND TO CONTINUE THESE USES OF PUBLIC STREET RIGHT OF WAY. GRABBER OF THE PARKING AREA SHALL BE ADJUSTED AS NEEDED TO PRESERVE THESE SEPARATELY OWNED IMPROVEMENTS.
 - (10) PRIVATE IMPROVEMENTS WITHIN STREET RIGHT-OF-WAY THAT ARE IN CONFLICT WITH DRIVEWAY CONSTRUCTION SHALL BE ADJUSTED BY THE PROPERTY OWNER AT HIS OWN EXPENSE.

CITY OF WICHITA, KANSAS

R-W-Bruggeman Director Of Engineering / City Engineer



1/4

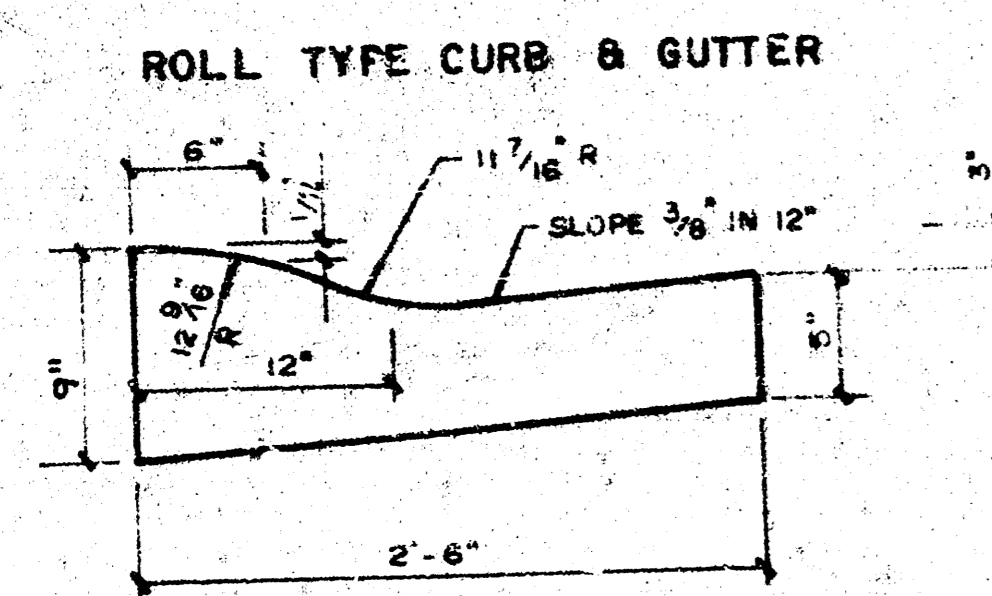
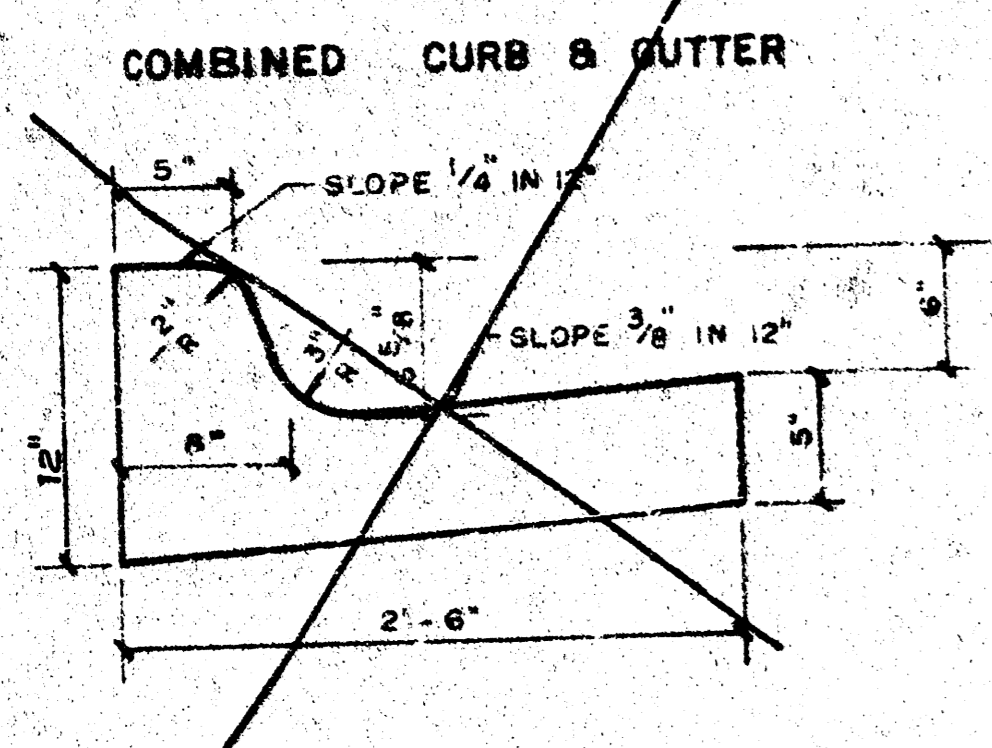


TYPICAL SECTION

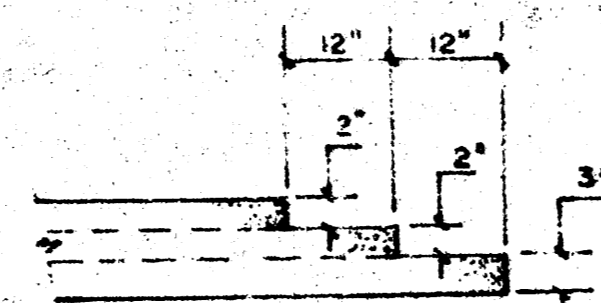
31' ASPHALTIC CONCRETE PAVEMENT WITH BITUMINOUS BASE

A TACK COAT OF EMULSIFIED ASPH (SS-IN or CSS-IN) SHALL BE APPLIED AT AN APPROXIMATE RATE 0.05 GALLONS PER SQ YD BETWEEN LIFTS OF ASPHALTIC MATERIALS WHEN ORDERED BY THE ENGINEER. TACK COAT WILL NOT BE PAID DIRECTLY AND SHALL BE CONSIDERED AS SUBSIDIARY TO PRICE BID FOR ASPHALTIC PAVEMENT. BITUMINOUS BASE AND ASPHALTIC CONCRETE WEARING SURFACE SHALL BE PLACED WITH A LAYDOWN MACHINE HAVING AUTOMATIC CONTROLS FOR CROWN AND GRADE. CONSTRUCTION JOINTS IN EACH LIFT SHALL BE STAGGERED A MINIMUM DISTANCE OF 1' WITH JOINTS IN PRECEDING LIFTS AND PLACED SUCH THAT A JOINT WILL BE CONSTRUCTED ON THE CENTERLINE IN THE TOP LIFT.

THE A.C. PAVEMENT BETWEEN THE COMBINED CURB AND GUTTER SHALL BE PAID AS SQ YDS 7" A.C. PAVEMENT (5" BITUMINOUS BASE). THE BITUMINOUS BASE UNDER THE COMBINED CURB AND GUTTER SHALL BE PAID AS SQ YDS 2 1/2" BITUMINOUS BASE.



DETAIL OF TRANSVERSE CONSTRUCTION JOINTS

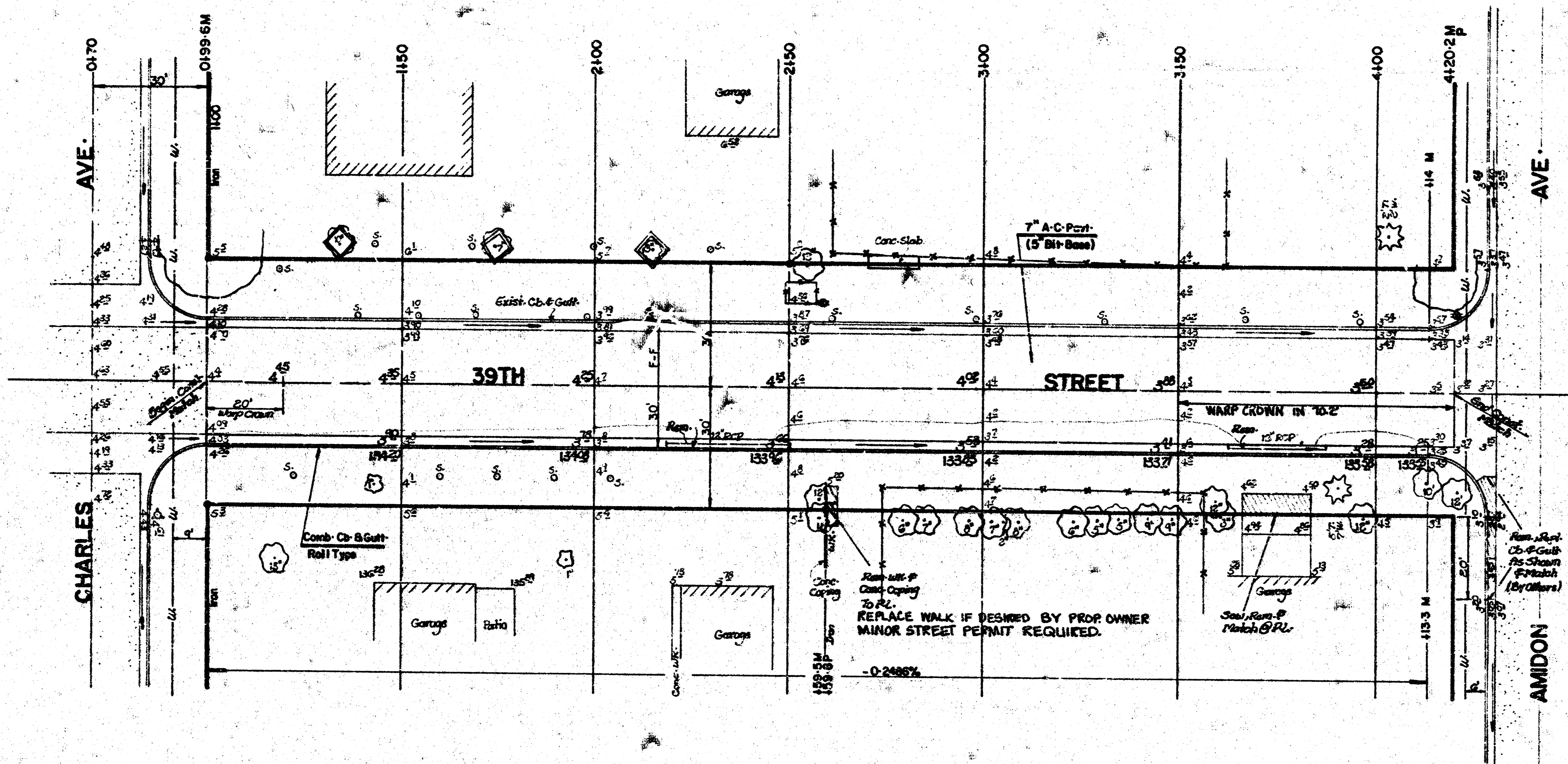
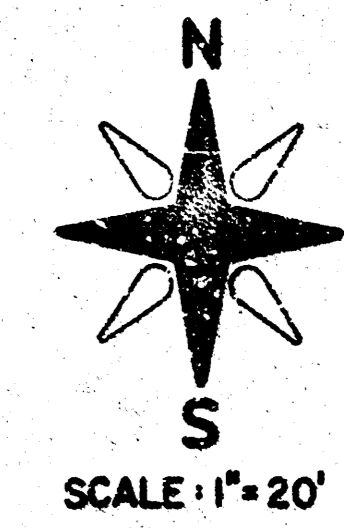


TRANSVERSE CONSTRUCTION JOINTS SHALL BE CONSTRUCTED IN FLEXIBLE BASE PAVEMENTS AT LOCATIONS WHERE PAVEMENT TEMPORARILY ENDS TO FACILITATE FUTURE PAVEMENT CONSTRUCTION AS SHOWN BY DETAIL. THE COST OF CONSTRUCTING THE TRANSVERSE CONSTRUCTION JOINTS SHALL NOT BE MEASURED OR PAID FOR DIRECTLY BUT SHALL BE INCLUDED IN THE BID PRICE FOR SQUARE YARDS OF A.C. PAVEMENT.

CITY OF WICHITA, KANSAS

3/4

B-M-133-39 City STD-39' E-52' 9" Of @ Both At 37TH ST-N-B Amidon
 B-M-137-04 N-W Cor Conc Porch House # 3950 N-Charles
 B-M-135-00 R-R Spt-W Face Street Light P-N-E Cor-39TH ST-B Charles



Survey Log
 Plan
 Elevation
 Checked

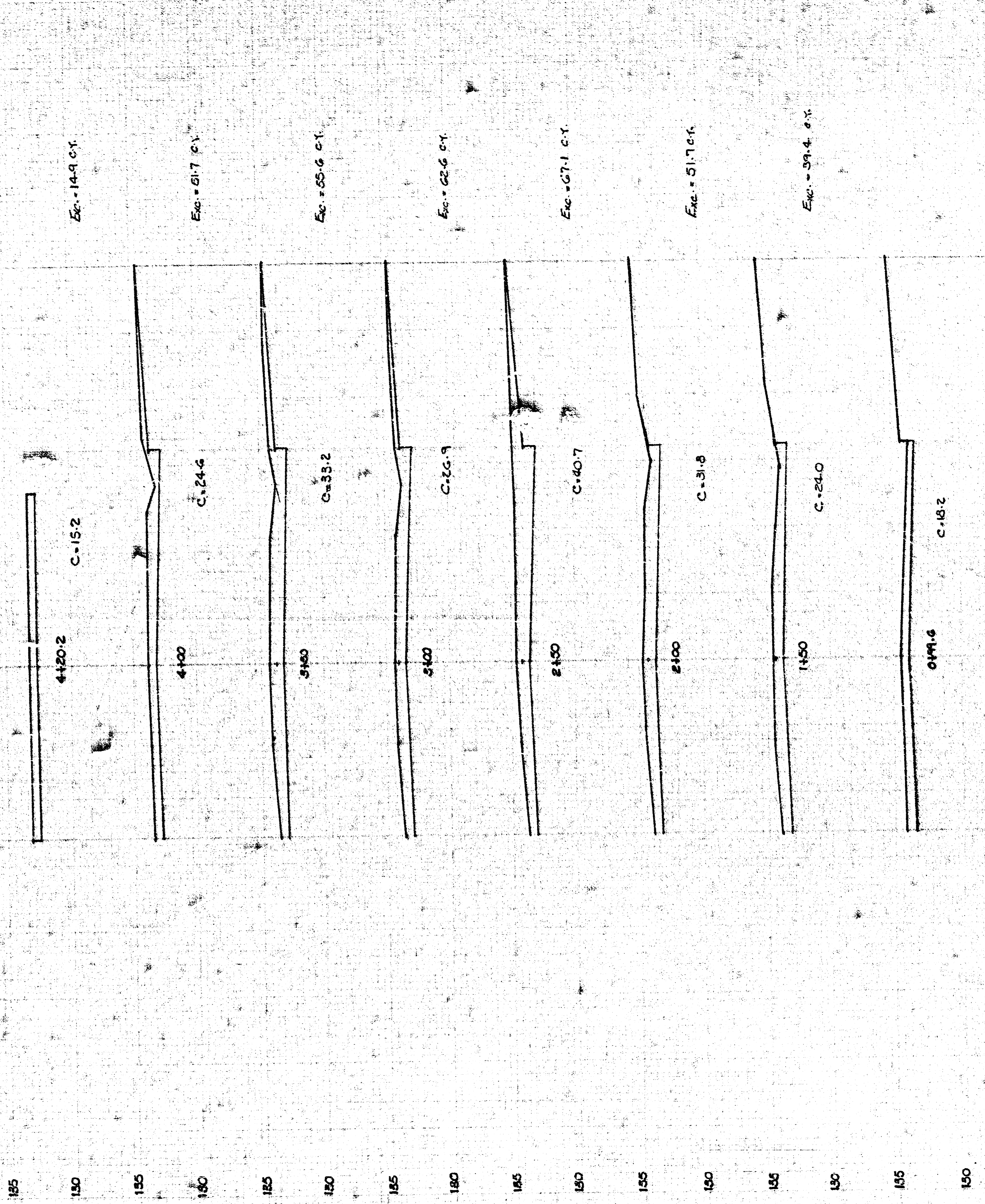
Excavation	344.80 c/y
+10%	34.48
Total	379.28 c/y
Manipulation	1036.3 c/y

CAUTION
UNDERGROUND
UTILITIES
 Please check with K G & E or
 Southwestern Bell
 Telephone Co. for Location

THE CONTRACTOR SHALL BE RESPONSIBLE FOR PRESERVING PROPERTY IRONS. THE CONTRACTOR SHALL BE REQUIRED TO RE-ESTABLISH ANY PROPERTY IRONS WHICH ARE DAMAGED OR DESTROYED BY HIS CONSTRUCTION OPERATIONS. SUCH IRONS SHALL BE RE-ESTABLISHED BY A LICENSED LAND SURVEYOR OR A LICENSED PROFESSIONAL ENGINEER IN ACCORDANCE WITH STATE LAWS.

PROJECT DESCRIPTION
39TH STREET 3/4
 PROJECT NUMBER
472-76-245-81228-000-000-001

FILMED FROM THE BEST AVAILABLE COPY....



Total Exc. = 344.3 c.y.

397H Street North
478-76-246/1228-000-000-001

10 3 5 14

FILMED FROM THE BEST AVAILABLE COPY