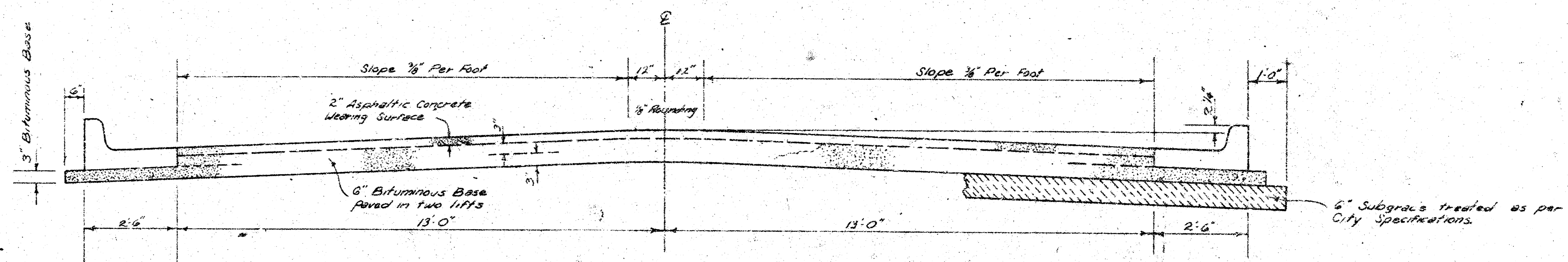


32 ND. STREET SOUTH
 W.L. ILLINOIS AVE. TO W.L. LEONINE R.D.
 PROJ. NO. DAKS 575107



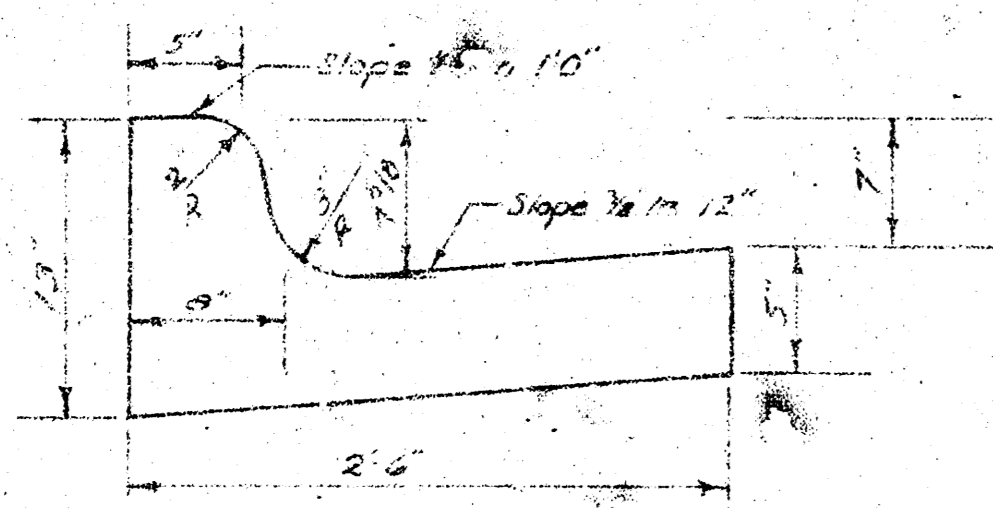
TYPICAL SECTION

3 1/2" ASPHALTIC CONCRETE PAVEMENT WITH BITUMINOUS BASE

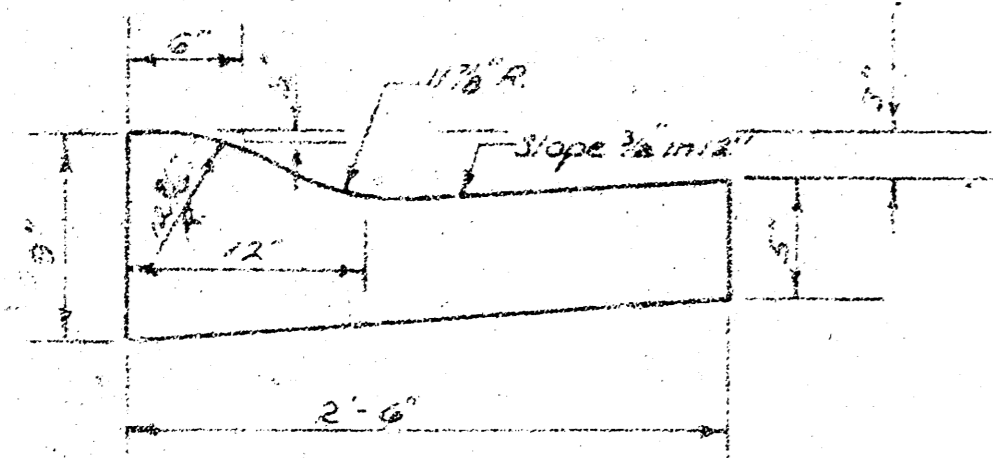
A TACK COAT OF EMULSIFIED ASPHALT (SS-IH) SHALL BE APPLIED AT AN APPROXIMATE RATE OF 0.05 GALLONS PER SQ. YD. BETWEEN LIFTS OF ASPHALTIC MATERIALS WHEN ORDERED BY THE ENGINEER. TACK COAT WILL NOT BE PAID FOR DIRECTLY AND SHALL BE CONSIDERED AS SUBSIDIARY TO PRICE BID FOR ASPHALTIC PAVEMENT. BITUMINOUS BASE AND ASPHALTIC CONCRETE WEARING SURFACE SHALL BE PLACED WITH A LAYDOWN MACHINE HAVING AUTOMATIC ELECTRONIC CONTROLS FOR CROWN AND GRADE. CONSTRUCTION JOINTS IN EACH LIFT SHALL BE STAGGERED A MINIMUM DISTANCE OF 1' WITH JOINTS IN PRECEDING LIFTS AND SUCH THAT A JOINT WILL BE CONSTRUCTED ON THE PAVEMENT CENTERLINE IN THE TOP LIFT.

The A.C. pavement between the Comb. Curb & Gutter shall be paid as 3 1/2" A.C. Pavement (6 Bituminous Base). The Bituminous Base under the Comb. Curb & Gutter shall be paid as 3" Bituminous Base.

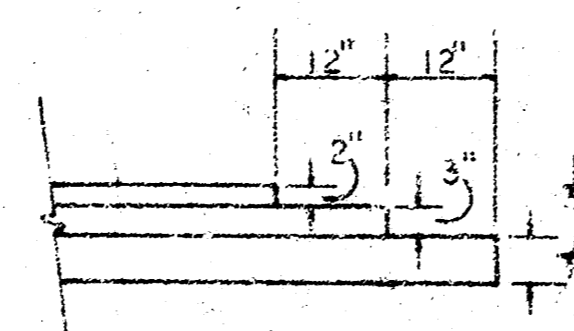
COMBINED CURB & GUTTER



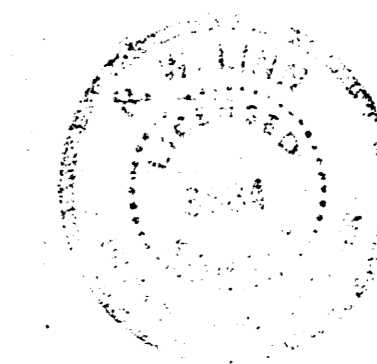
ROLL TYPE CURB & GUTTER



DETAIL OF TRANSVERSE CONSTRUCTION JOINTS



TRANSVERSE CONSTRUCTION JOINTS SHALL BE CONSTRUCTED IN FLEXIBLE BASE PAVEMENTS AT LOCATIONS WHERE PAVEMENT TEMPORARILY ENDS TO FACILITATE FUTURE PAVEMENT CONSTRUCTION AS SHOWN BY DETAIL. THE COST OF CONSTRUCTING THE TRANSVERSE CONSTRUCTION JOINTS SHALL NOT BE MEASURED OR PAID FOR DIRECTLY BUT SHALL BE INCLUDED IN THE BID PRICE FOR SQUARE YARDS OF ASPHALTIC CONCRETE PAVEMENT.



CITY OF WICHITA, KANSAS

DEPARTMENT OF PUBLIC WORKS — ENGINEERING

R. W. LINN CITY ENGINEER

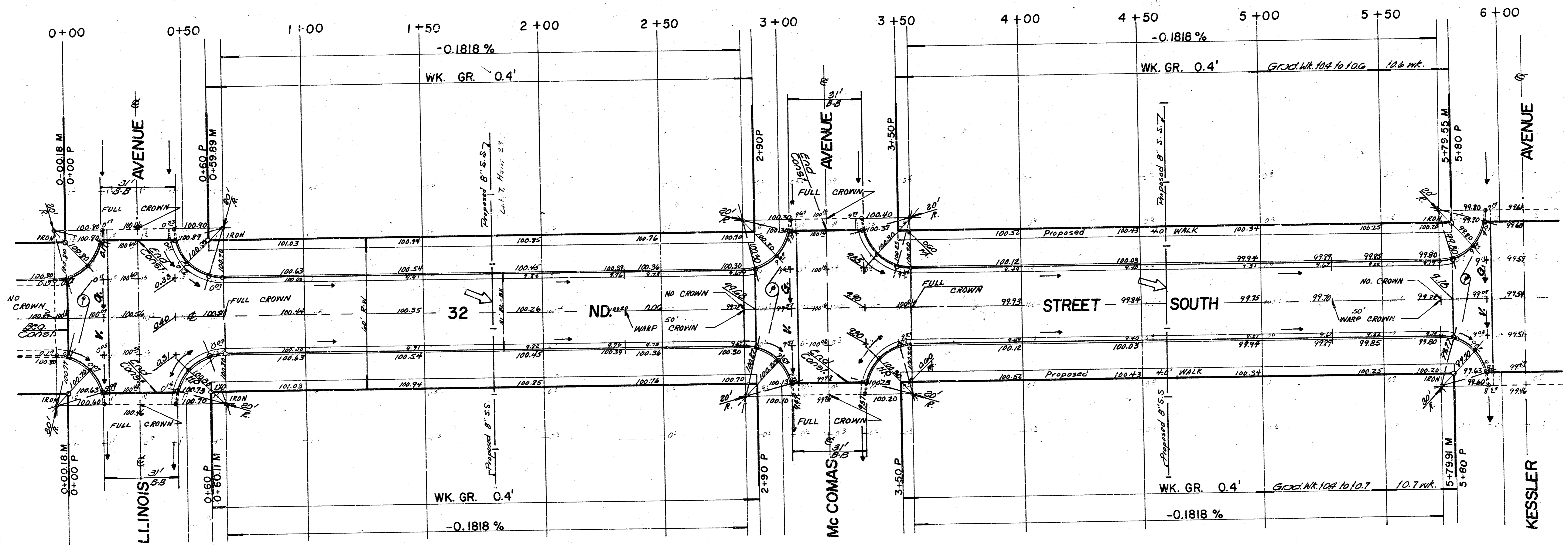
DATE: Nov. 1975 PROJ. NO. DAKS 575107



B.M. - 101.81 - S.E. Corner of Concrete Porch at 350th Street South
 B.M. - 99.32 - Cut in Top of Curb, N. End of Radius; N.W. Corner of 32nd Street South & Knight Avenue
 B.M. - 101.68 - Cut in Top of Curb, E. Return; S.E. Corner of 31st Street South & Kessler Avenue
 B.M. - 98.51 - Cut in Top of Curb, N. Return; N.E. Corner of 33rd Street South & Leonine Road

Scale 1" = 20'

CAUTION
 UNREINFORCED
 UTILITY
 (Small text below: Please do not dig or disturb without permission of the City of St. Louis, Missouri. Telephone Call for Location.)



Survey done by
 E. J. Ziegler
 Checked by
 D. L. Ziegler

Earthwork		
	Property	City
Excavation	1864.7 CY	318.7 CY
+10%	186.5	31.8
Total	2051.2 CY	348.5 CY
Comp. Fill	26.3 CY	3.6 CY
+10%	2.6	0.4
Total	28.9 CY	4.0 CY

① - 6" conc. + 2" asph. Valley Gutter Const.

Property 3373.33 S.Y.
 Manipulation City 70329 S.Y.

*NOTE: PAVING CONTRACTOR TO COORDINATE WORK w/ SEWER CONTRACTOR

NOTE TO FIELD ENGINEER & CONTRACTOR
 Check pricing and site signatures for proposed work. Computer did not prevent area to be constructed by OTHERS.

SUB-GRADE
 TYPE OF SUB-GRADE TREATMENT SHALL BE DETERMINED BY THE FIELD ENGINEER. SUB-GRADE TREATMENT MAY CONSIST OF LIME TREATMENT, CEMENT TREATMENT, SUB-GRADE MODIFICATION, OR ANY COMBINATION OF THESE.

32 ND STREET SOUTH
 W.L. Illinois Avenue to W.L. Leonine Road
 Proj. No.: DAKS 575107