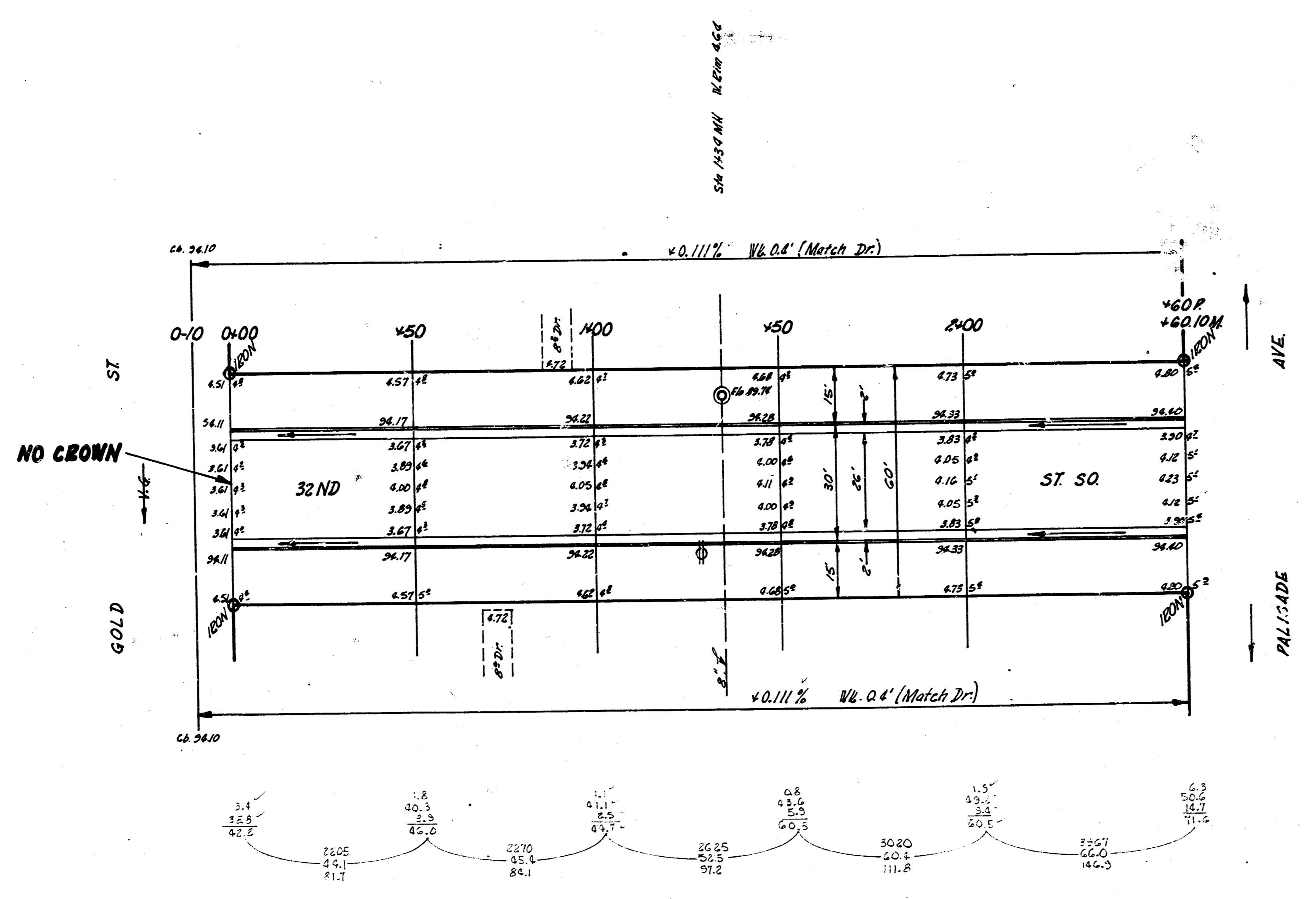


B.M. 95.98 S.E. Cor. Conc. Po. Ho. 3301 S. Gold  
 B.M. 96.43 N.W. Cor. Conc. Po. Ho. 3302 S.E. Corner 32<sup>nd</sup> & Palisade

Chaining From W. to E. on N. Pl.



11/15/56  
 B.E. SMITH  
 CIVIL ENGINEER  
 CHICAGO, ILL.

32ND ST. SQ.  
 E.L. GOLD - W.L. PALISADE  
 26-2-30 A.C.  
 CITY OF WICHITA, KANS.  
 B.E. SMITH CITY ENGINEER  
 SEPT., 1956 PROJ. NO. C14-74

PROP. EXCAV.  
 521.7  
 +10% 522.2  
 572.9 Cu.Yd.

