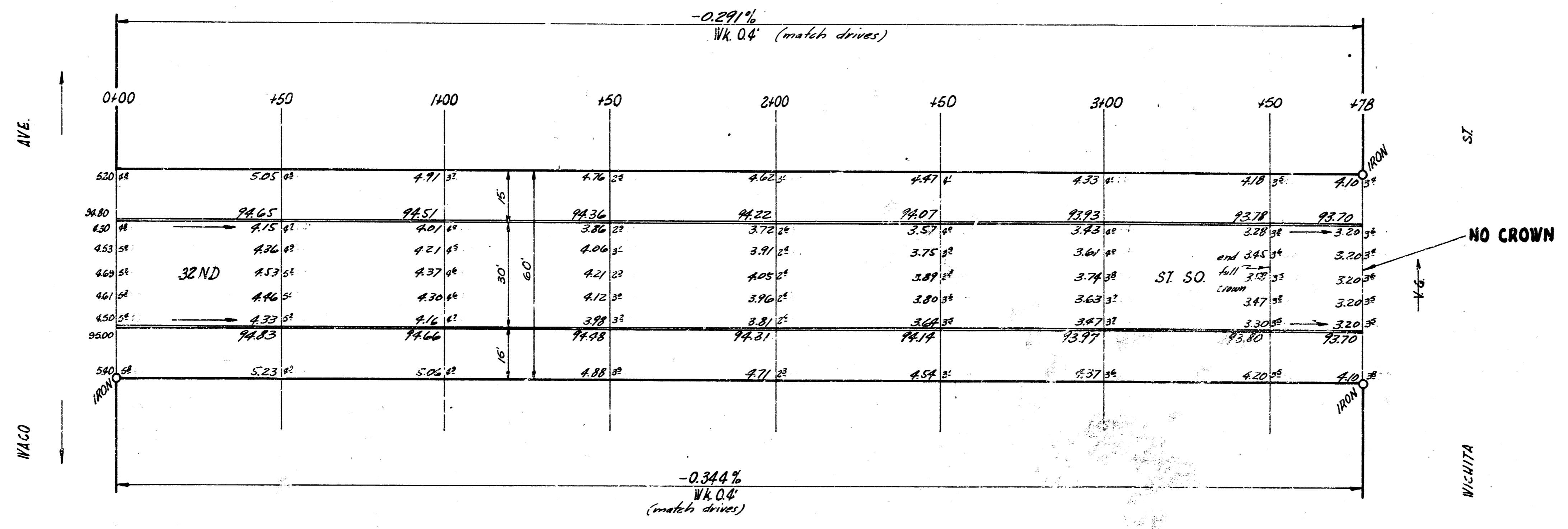


B.M. 5674 NW cor. conc. porch to #301 W. 33rd St So.

Sta. on E



YOUNG  
162  
162

32ND ST. SO  
 E.L. WACO - W.L. WICHITA  
 30' CONC. & C.B.  
 CITY OF WICHITA, KANS.  
 B.E. SMITH CITY ENGINEER  
 July 1957 PROJ. NO. C15-27

