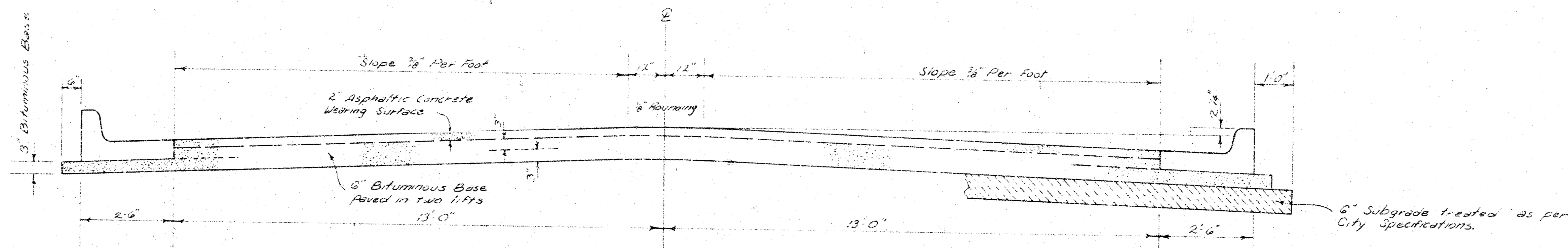


# 33 RD. STREET SOUTH

E.L. KESSLER AVE. TO W.L. LEONINE RD.

PROJ. NO.: DAKS 575108

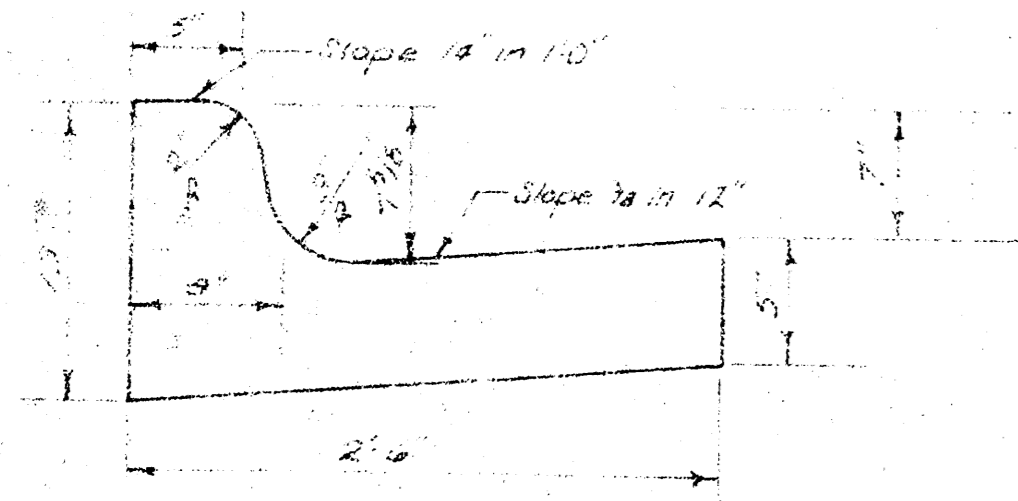


## TYPICAL SECTION

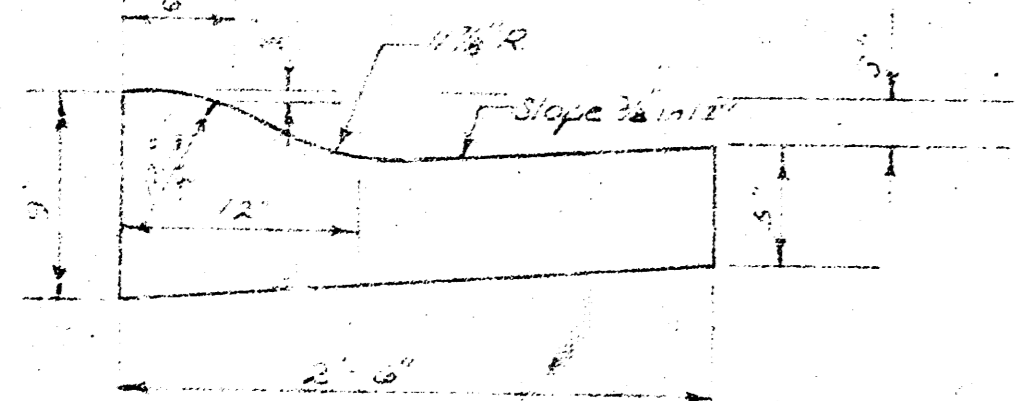
31' ASPHALTIC CONCRETE PAVEMENT WITH BITUMINOUS BASE

*The A.C. pavement between the Comb. Curb & Gutter shall be paid as 3 1/2% B" A.C. Pavement (6" Bituminous Base). The Bituminous Base under the Comb. Curb & Gutter shall be paid as 3 1/2% 3" Bituminous Base.*

COMBINED CURB & GUTTER



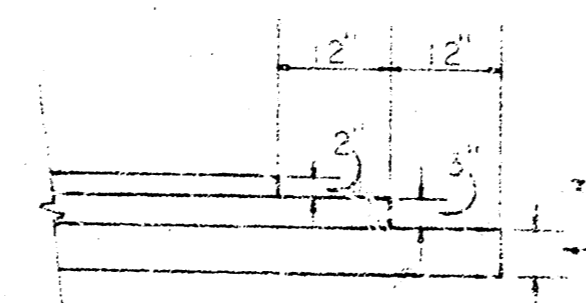
ROLL TYPE CURB & GUTTER



A TACK COAT OF EMULSIFIED ASPHALT (SS-1H) SHALL BE APPLIED AT AN APPROXIMATE RATE OF 0.05 GALLONS PER SQ. YD. BETWEEN LIFTS OF ASPHALTIC MATERIALS WHEN ORDERED BY THE ENGINEER. TACK COAT WILL NOT BE PAID FOR DIRECTLY AND SHALL BE CONSIDERED AS SUBSIDIARY TO PRICE BID FOR ASPHALTIC PAVEMENT.

BITUMINOUS BASE AND ASPHALTIC CONCRETE WEARING SURFACE SHALL BE PLACED WITH A LAYDOWN MACHINE HAVING AUTOMATIC ELECTRONIC CONTROLS FOR CROWN AND GRADE. CONSTRUCTION JOINTS IN EACH LIFT SHALL BE STAGGERED A MINIMUM DISTANCE OF 1' WITH JOINTS IN PRECEDING LIFTS AND SUCH THAT A JOINT WILL BE CONSTRUCTED ON THE PAVEMENT CENTERLINE IN THE TOP LIFT.

### DETAIL OF TRANSVERSE CONSTRUCTION JOINTS



TRANSVERSE CONSTRUCTION JOINTS SHALL BE CONSTRUCTED IN FLEXIBLE BASE PAVEMENTS AT LOCATIONS WHERE PAVEMENT TEMPORARILY ENDS TO FACILITATE FUTURE PAVEMENT CONSTRUCTION AS SHOWN BY DETAIL. THE COST OF CONSTRUCTING THE TRANSVERSE CONSTRUCTION JOINTS SHALL NOT BE MEASURED OR PAID FOR DIRECTLY BUT SHALL BE INCLUDED IN THE BID PRICE FOR SQUARE YARDS OF ASPHALTIC CONCRETE PAVEMENT.



CITY OF WICHITA, KANSAS

DEPARTMENT OF PUBLIC WORKS — ENGINEERING

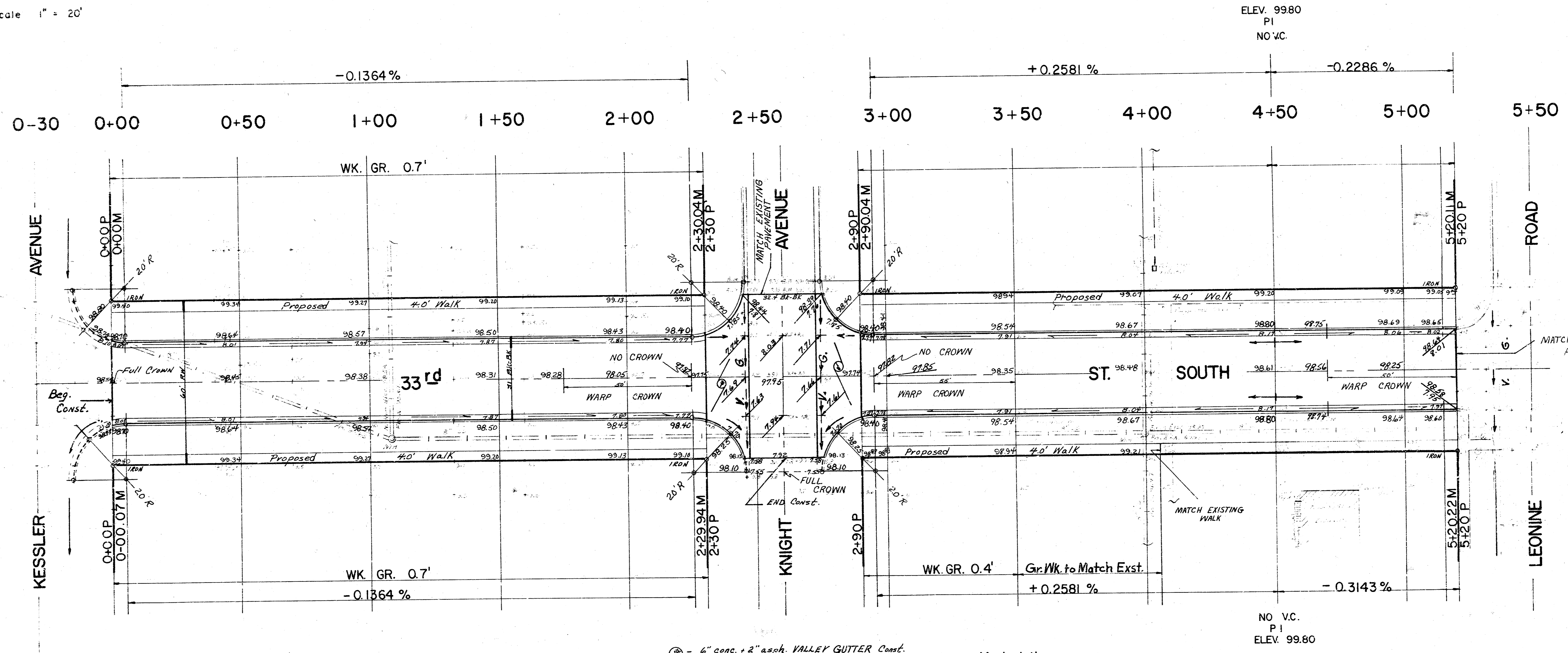
R. W. LINN CITY ENGINEER

DATE: August 22, 1972 PROJ. NO. DAKS 575108



BM - 98.51 - in Top of Curb on N. Return of N.E. Corner of  
33<sup>rd</sup> St. So. and Leonine Rd.  
± - 2.0' So. and Parallel to the No. Line of 33<sup>rd</sup> St. So.

Scale 1" = 20'



Survey 1726 81.02/220  
 By J. Brues  
 Checked

Earthwork		
	Property	City
Excavation	11839 C.Y.	269.4 C.Y.
+ 10%	1184	26.9
<b>Total</b>	<b>13023 C.Y.</b>	<b>296.3 C.Y.</b>
Comp. Fill	17.5 C.Y.	0.4 C.Y.
+ 10%	1.8	
<b>Total</b>	<b>19.3 C.Y.</b>	<b>0.4 C.Y.</b>

⊗ = 6" conc. + 2" asph. VALLEY GUTTER Const.

**Manipulation**  
 Property - 1687.67 S.Y.    City - 359.22 S.Y.

NOTE TO BID ENGINEER & CONTRACTOR  
 Check utility and existing conditions for pro-  
 posed work. Contact of all utilities shall  
 to be conducted by "others".

NOTE - Engineer to X-sec. before const.  
 for final earthwork quantities.

**SUB-GRADE**  
 TYPE OF SUB-GRADE SHALL BE DE-  
 TERMINED BY THE ENGINEER. SUB-GRADE  
 SHALL BE 12" MINIMUM THICKNESS. FILLING,  
 CEMENT, OR ANY OTHER MATERIALS FOR SUB-GRADE  
 SHALL BE APPROVED BY THE ENGINEER.

**33<sup>rd</sup> ST. SOUTH**  
 E.L. of Kessler Ave. - W.L. of Leonine Rd.  
 Proj. No.: DAKS 575108

FILMED FROM THE BEST  
 AVAILABLE COPY.....