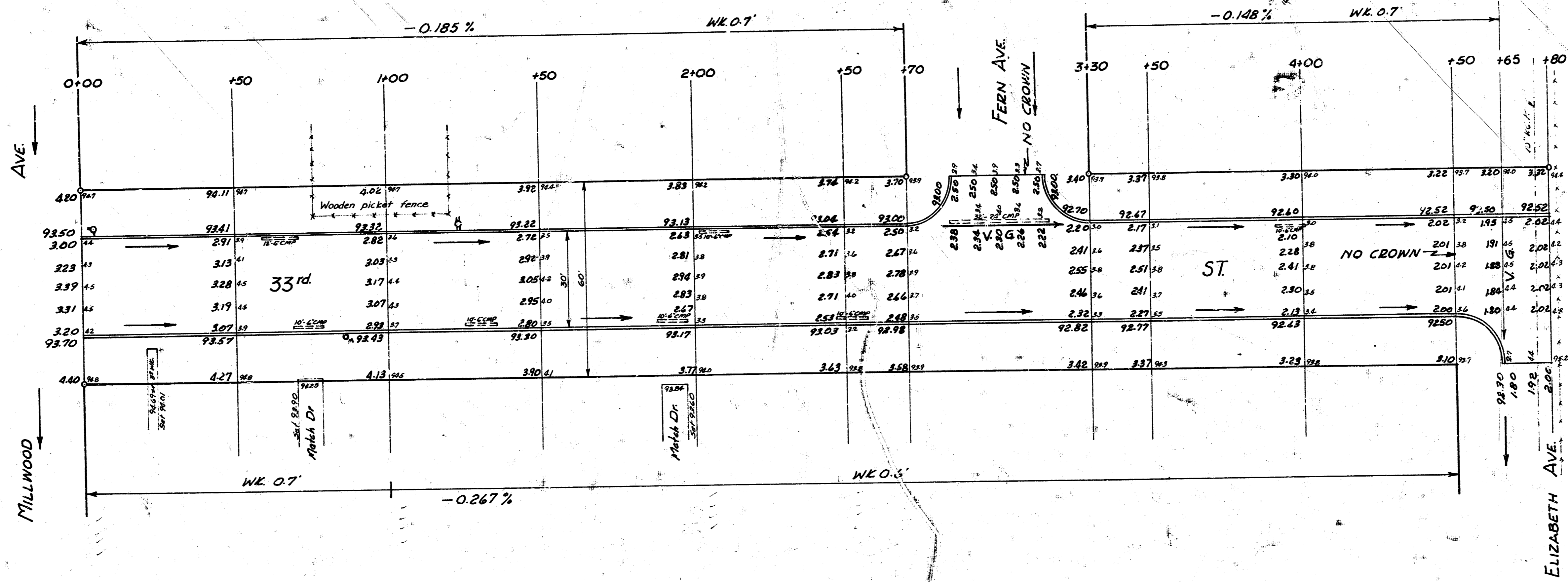
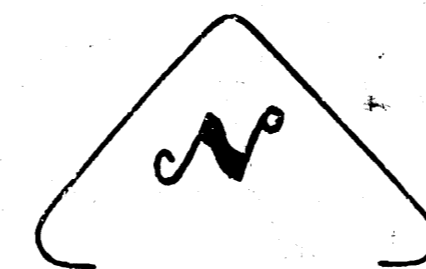


BM: 94.58 SW cor conc. porch Ho. # 3344 So. Fern



Survey Young  
 Plumb Green  
 L.S. Green  
 Phoenix

**NOTICE TO CONTRACTOR:-**  
 All entrance pipes are to be disposed of in accordance  
 with instructions of City Dirt Checker.



33<sup>rd</sup> ST.  
 EL MILLWOOD to EL CARLANS ADDN.  
 30' Conc. & Cb.  
 CITY OF WICHITA, KANSAS  
 D.E. SMITH CITY ENGINEER  
 MAY 1956 PROJ NO C16-67