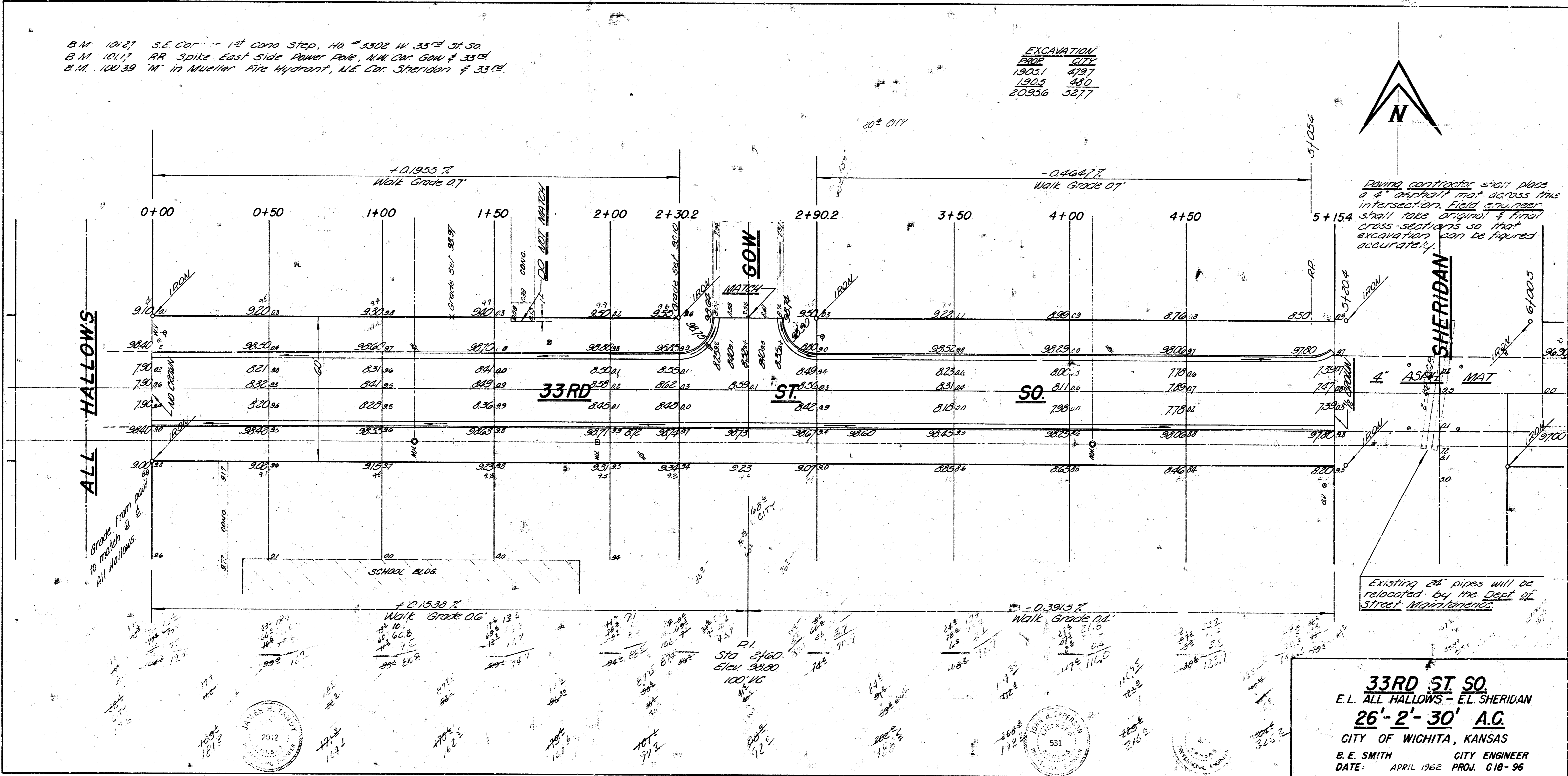
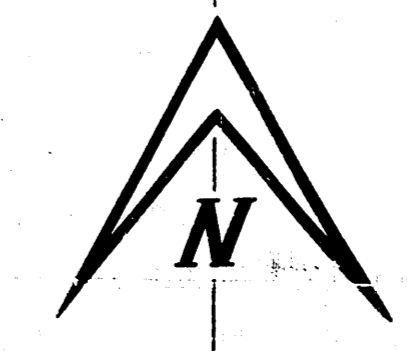


B.M. 10127 S.E. Cor. 1st Cond. Stop, 40' x 3302 W. 33rd St. So.  
 B.M. 10117 RR Spike East Side Power Pole, NW Cor. GOW # 33rd  
 B.M. 10039 'M' in Mueller Fire Hydrant, N.E. Cor. Sheridan # 33rd

EXCAVATION	DATE	CITY
19031	4/97	
1905	9/0	
20856	5/77	



Paving contractor shall place a 4" asphalt mat across this intersection. Field engineer shall take original & final cross sections so that excavation can be figured accurately.

Existing 24" pipes will be relocated by the Dept. of Street Maintenance.

**33RD ST. SO.**  
 E.L. ALL HALLOWS - E.L. SHERIDAN  
**26'-2'-30' A.C.**  
 CITY OF WICHITA, KANSAS  
 B. E. SMITH CITY ENGINEER  
 DATE: APRIL 1962 PROJ. C18-96

