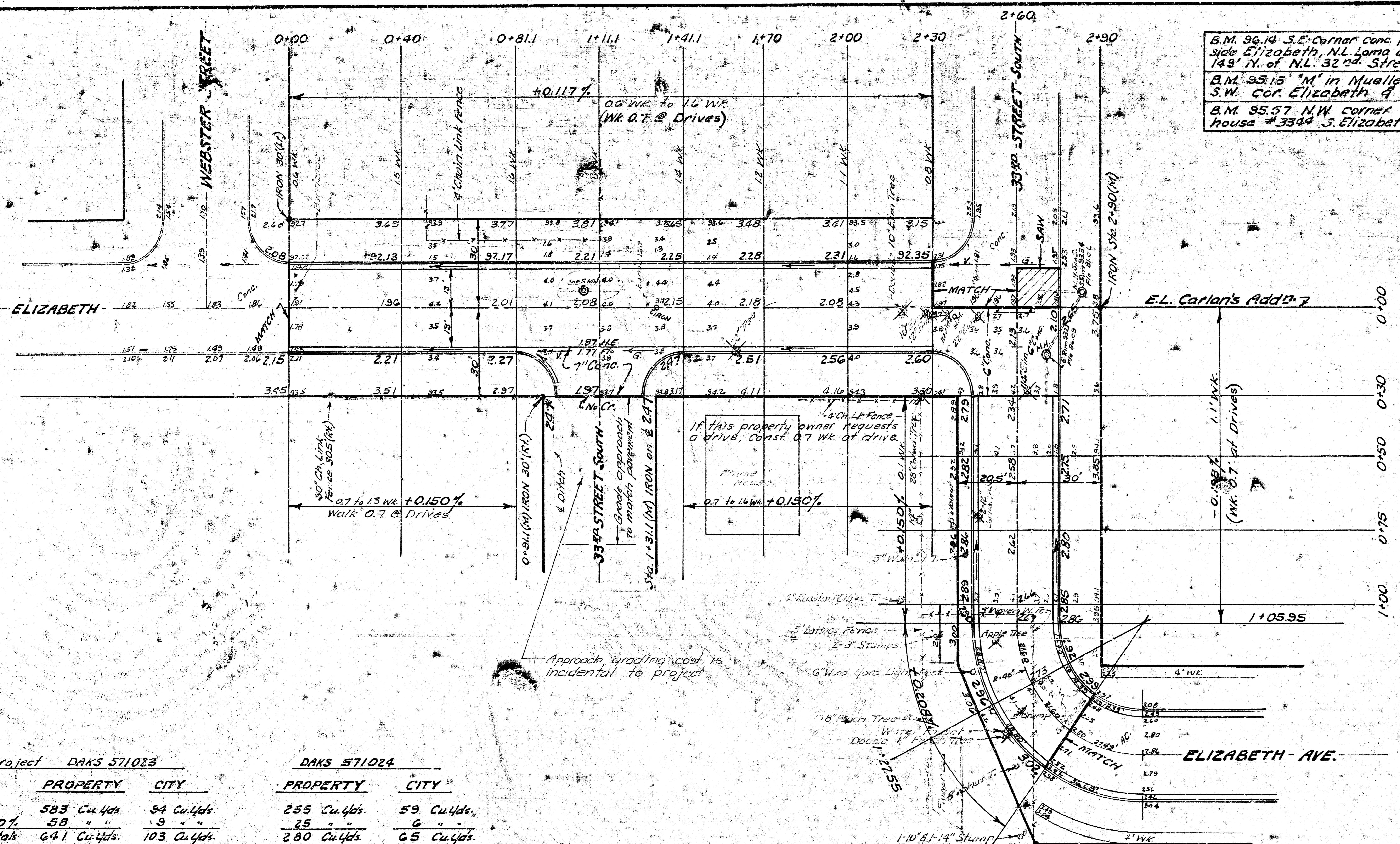


B.M. 96.14 S.E. Corner conc. porch house west side Elizabeth, N.L. Loma Linda Gardens, 143' N. of N.L. 32nd Street.
 B.M. 95.15 "M" in Mueller top fire hyd. S.W. Cor. Elizabeth & Webster.
 B.M. 95.57 N.W. corner concrete porch house #3344 S. Elizabeth.



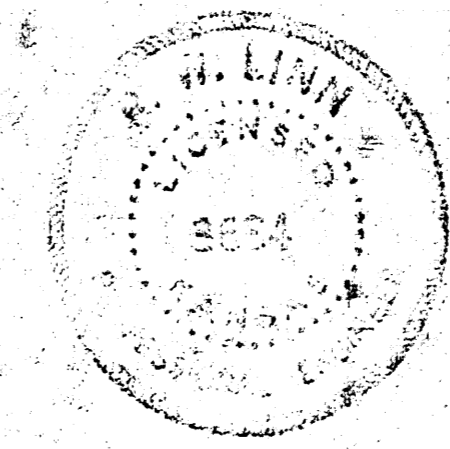
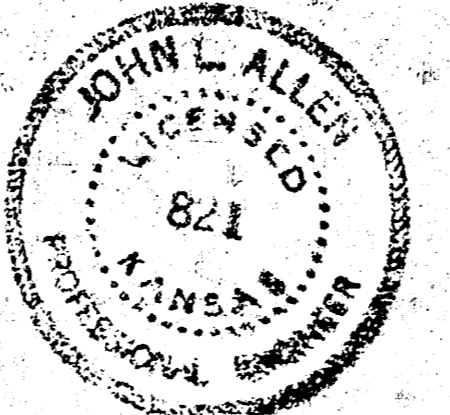
NOTE:
 Contractor to remove barricades and deliver to the City Traffic Engineer material yard located at 611 West Second Street. (4 barricades)

NOTE:
 Contractor to clear right-of-way and grade parkings to elevations shown on plans.

Approach grading cost is incidental to project

If this property owner requests a drive, Const. 0.7 Wk. at drive.

Project DAKS 571023		DAKS 571024	
PROPERTY	CITY	PROPERTY	CITY
583 Cu.Yds.	94 Cu.Yds.	255 Cu.Yds.	59 Cu.Yds.
58 "	9 "	25 "	6 "
641 Cu.Yds.	103 Cu.Yds.	280 Cu.Yds.	65 Cu.Yds.
765 Sq.Yds.	140 Sq.Yds.	470 Sq.Yds.	140 Sq.Yds. Cement treated Subgrade.



33^{RD.} STREET SOUTH
 E.L. CARLAN'S ADDITION to
 E.L. ELIZABETH AVE. (NORTH)
 26'-2'-30" Asph. Conc.
 Project No. DAKS 571024

ELIZABETH AVENUE
 N.L. WEBSTER STREET to
 S.L. 33^{RD.} ST. SOUTH (WEST)
 26'-2'-30" Asph. Conc.
 R.W. LINN CITY ENGINEER
 CITY OF WICHITA KANSAS
 Date: Sept. 1972
 Project No. DAKS 571023