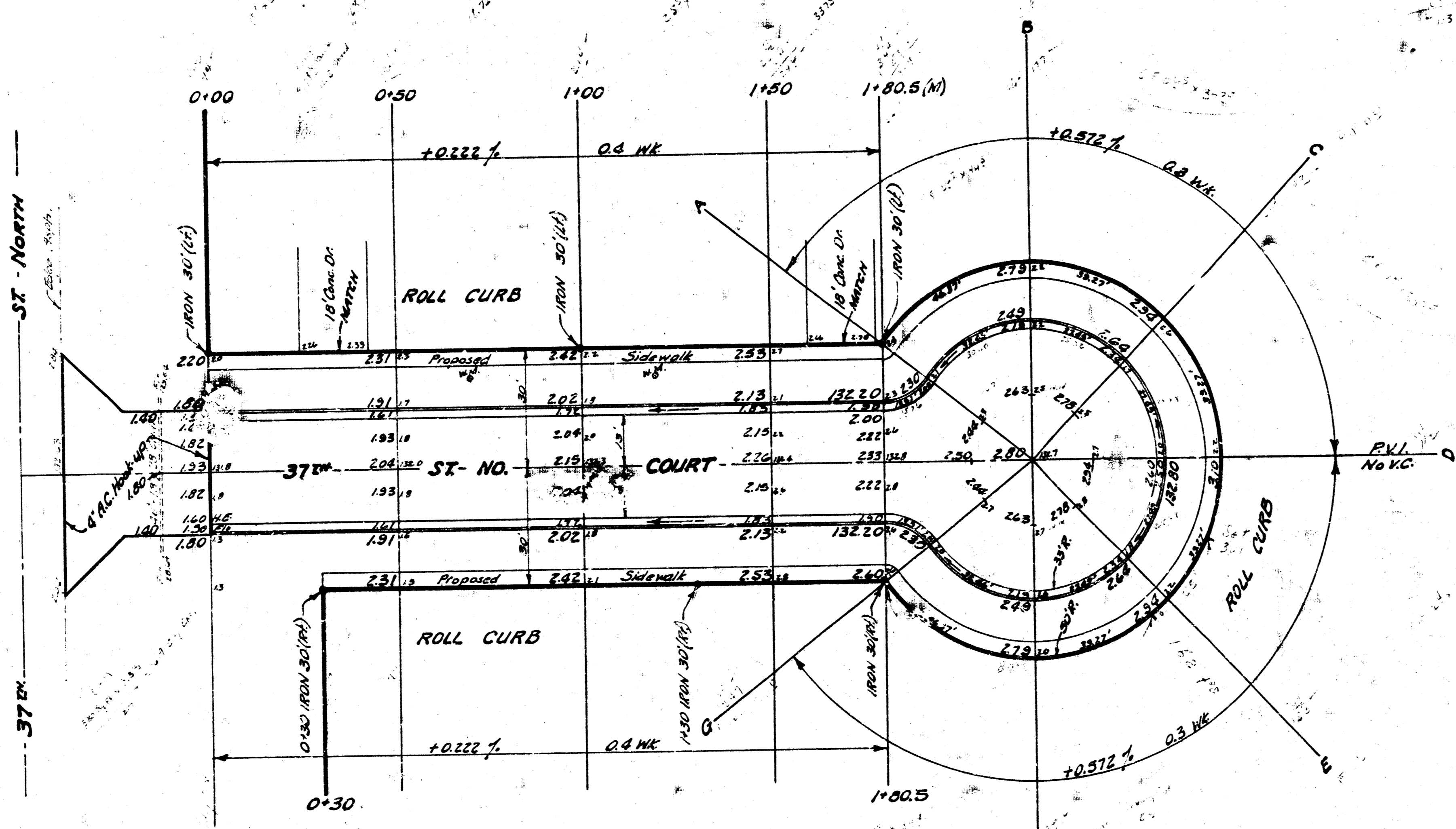


B.M. 134.63 R.R. Spike, N. side P. pole on S. side 37th St. N. 1/2 mile E. of Meridian.

Scale: 1" = 20'

11.2' 11.2' x 11.2' x 11.2'
 A 11.2' 11.2' x 11.2' x 11.2'
 B 11.2' 11.2' x 11.2' x 11.2'
 C 11.2' 11.2' x 11.2' x 11.2'
 D 11.2' 11.2' x 11.2' x 11.2'
 E 11.2' 11.2' x 11.2' x 11.2'
 F 11.2' 11.2' x 11.2' x 11.2'
 G 11.2' 11.2' x 11.2' x 11.2'
 H 11.2' 11.2' x 11.2' x 11.2'



NOTE:
Contractor to clear right-of-way, grade parkings and compact fill for proposed sidewalk. Sidewalk to be constructed by others.

NOTE:
Depress curb through driveways.

EXCAVATION		COMP. FILL	
PROPERTY	CITY	PROPERTY	
233 Cu.Yds.	26 Cu.Yds.	8 Cu.Yds.	
+10% 23	3	1	
Totals 256 Cu.Yds.	29 Cu.Yds.	9 Cu.Yds.	S.G.M.
		180	
		189 Cu.Yds.	

37th STREET NO. COURT
 N.L. 37th St. No. to of Inc. Cur-DE-SAC
 Lots 6, 7, 8, 9, 10, 11 & 12, Block 4
 SHERWOOD GLEN 2nd ADDITION
 26-2-30 Asp. Conc.
 B.E. SMITH CITY ENGINEER
 CITY OF WICHITA KANSAS
 Date: May 1969

Project No. C15-11