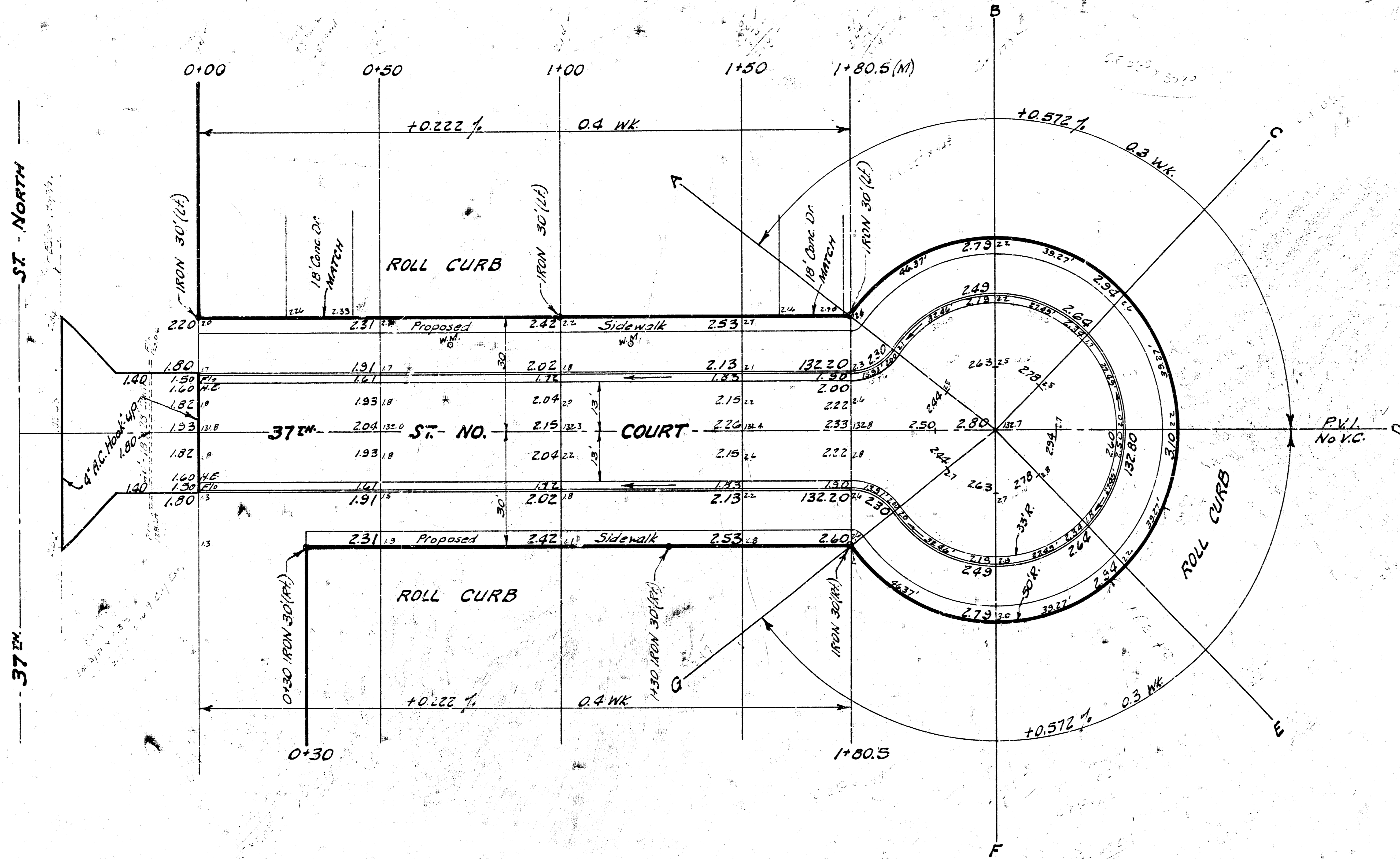


B.M. 13463 R.R. Spike, N. side P. pole on S. side 37th St. N. 1/2 mile E. of Meridian.

Scale: 1" = 20'

A 20' = 23.35 x 23.14  
 B 17' = 18.45 x 14.70  
 C 9' = 10.25 x 14.14  
 D 11' = 13.35 x 14.14  
 E 15' = 21.55 x 14.14  
 F 20' = 24.15 x 14.70  
 G 24' = 23.35 x 23.14



**NOTE:**

Contractor to clear right-of-way, grade parkings and compact fill for proposed sidewalk. Sidewalk to be constructed by others.

**NOTE:**

Depress curb through driveways.

**EXCAVATION**

**COMP. FILL**

PROPERTY	CITY
233 Cu.Yds.	26 Cu.Yds.
+10% 23 "	3 "
Totals 256 Cu.Yds.	29 Cu.Yds.

PROPERTY	
8 Cu.Yds.	
1 "	
9 Cu.Yds.	
180 " S.G.M.	
189 Cu.Yds.	

**37th STREET NO. COURT**  
 N.L. 37th St. No. to & inc. CUL-DE-SAC  
 Lots 6, 7, 8, 9, 10, 11 & 12, BLOCK 4  
 SHERWOOD GLEN 2<sup>ND</sup> ADDITION  
 26-2-30 Asph. Conc.  
**B.E. SMITH CITY ENGINEER**  
 CITY OF WICHITA KANSAS  
 Date: May 1969

Project No. C15-11

