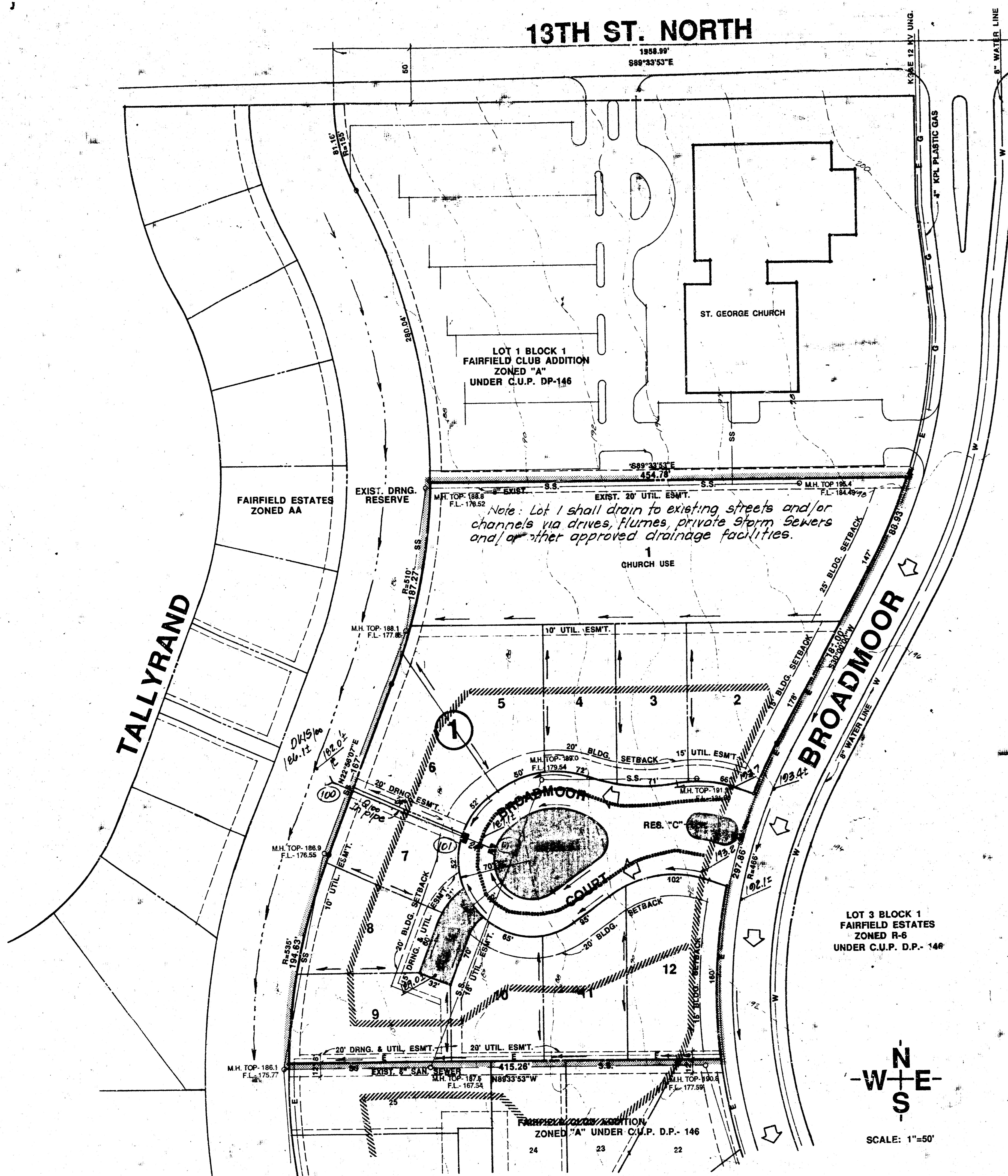


13TH ST. NORTH



**LEGEND**

- Drainage Direction - Minor Storm
- ⇨ Drainage Direction - Major Storm
- Proposed Storm Water Sewer Inlet
- Drainage Basin Boundary
- Drainage Sub-Basin Boundary
- 194.2 Estimated Future Street Elevation
- (100) Node Identification Point

**NOTES:**

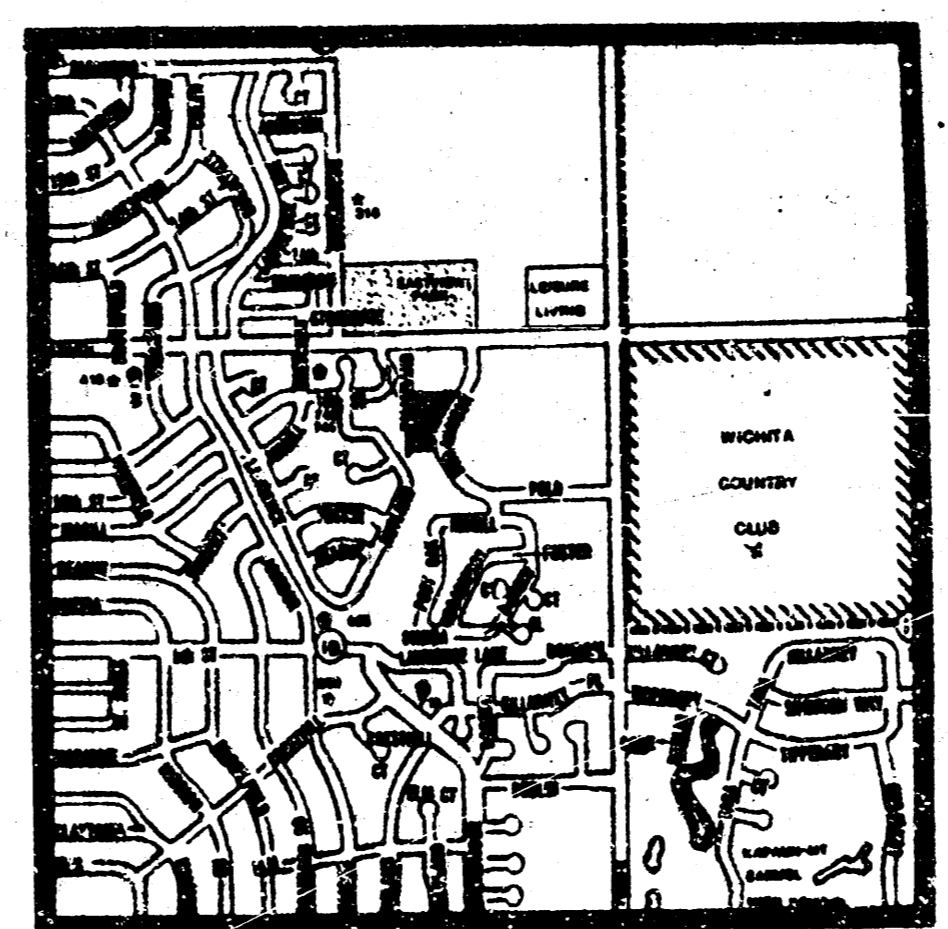
BENCHMARK: CITY OF WICHITA BENCHMARK DISC 42" NORTH AND 38" EAST OF INTERSECTION OF ROCK ROAD AND 13TH STREET NORTH. ELEV.- 186.85 CITY DATUM

SEE AMENDED FAIRFIELD RESIDENTIAL C.U.P. DP-146 FOR ADDITIONAL REQUIREMENTS.

RESERVE "A" IS PLATTED FOR DRAINAGE, UTILITIES CONFINED TO EASEMENTS AND PRIVATE DRIVE ACCESS TO LOTS 7,8 AND 9.

RESERVE "B" IS PLATTED FOR LANDSCAPING, ENTRY MONUMENTS, GAZEBOS, AND UTILITIES CONFINED TO EASEMENTS.

RESERVE "C" IS PLATTED FOR LANDSCAPING, ENTRY MONUMENTS AND UTILITIES CONFINED TO EASEMENTS.

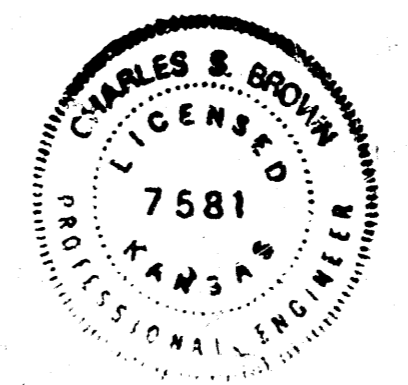


LOCATION MAP  
NO SCALE



SCALE: 1"=50'

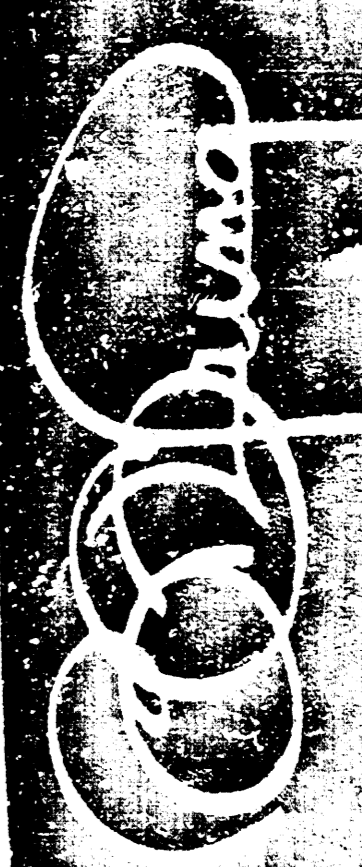
**APPROVED  
DRAINAGE PLAN**



DRAINAGE PLAN CONCEPT 5/3/01

# THE ABBEY AT FAIRFIELD

OWNER: RALPH RUDY 716 N. GOW, WICHITA, KANSAS 67207



**BILL G. YUNG DESIGN**  
412 E 9TH STREET NORTH WICHITA, KS 67203  
316-863-6667 FAX 316-863-6225

DATE: APRIL 5, 1981  
REV.

SHEET TITLE  
PRELIMINARY PLAN

PROJECT  
THE ABBEY AT FAIRFIELD

SHEET  
OF

FILMED FROM THE BEST AVAILABLE COPY

# THE ABBEY AT FAIRFIELD

## AN ADDITION TO WICHITA, SEDGWICK COUNTY, KANSAS



SCALE: 1"=50'

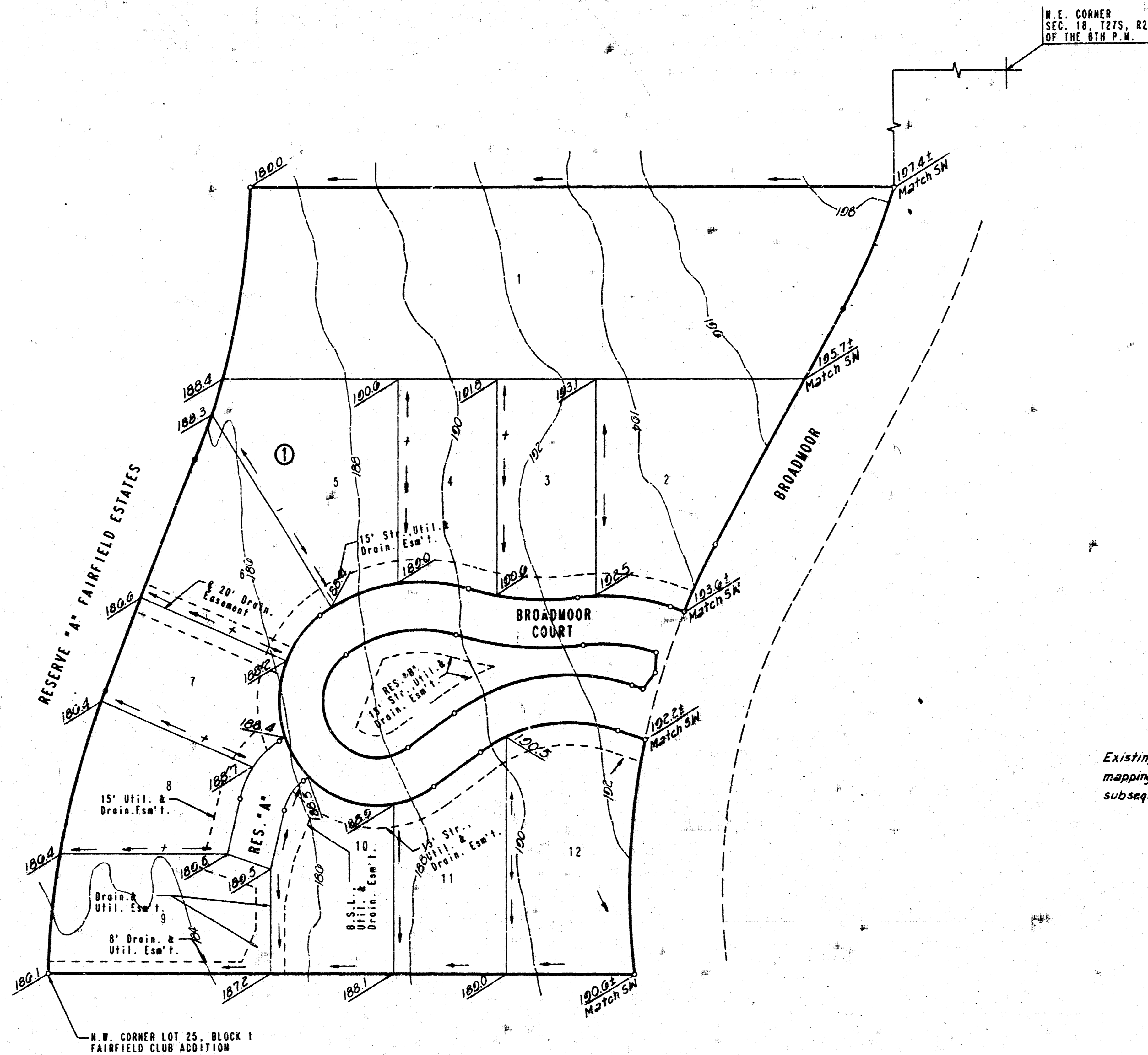
○ = IRON SET  
● = IRON FOUND

B.M. - CITY OF WICHITA BENCH MARK DISC  
42' NORTH AND 38' EAST OF INTERSECTION  
CENTERLINES OF ROCK ROAD AND  
13TH STREET NORTH.  
ELEV. = 186.85 (CITY DATUM)  
ELEV. = 1374.25 (M.S.L.)

B.M. - CHISELED "O" ON BACK OF CURB AT  
SOUTHEAST CORNER OF LOT 12, BLOCK 1,  
THE ABBEY AT FAIRFIELD.  
ELEV. = 189.48 (CITY DATUM)  
ELEV. = 1377.89 (M.S.L.)

MINIMUM PAD ELEVATION (LOWEST OPENING) FOR  
LOTS 1 AND 5 THROUGH 9, BLOCK 1, = 187.1  
CITY DATUM OR 1374.5 M.S.L.

PLAN	SURVEYED	BY	DATE
NOTE BOOK <td>PLOTTED <td></td> <td></td> </td>	PLOTTED <td></td> <td></td>		
ALIGNMENT <td>CHECKED <td></td> <td></td> </td>	CHECKED <td></td> <td></td>		
BY <td>DATE <td></td> <td></td> </td>	DATE <td></td> <td></td>		
BY <td>DATE <td></td> <td></td> </td>	DATE <td></td> <td></td>		



N. E. CORNER  
SEC. 18, T27S, R2E  
OF THE 6TH P.M.

Existing contours shown are based on original topographic mapping. Some fill may have been placed in project area subsequent to mapping.

**APPROVED  
DRAINAGE PLAN**

DRAWING NAME: 32-91314 PLAT  
LOCATION: IN 4975  
CENTER COORDINATES:  
DATE LAST WORKED ON:  
SPECIAL INSTRUCTIONS:

THE ABBEY AT FAIRFIELD

**DETAILED DRAINAGE PLAN**

PROFESSIONAL ENGINEERING CONSULTANTS, P.A.  
ENGINEERS  
WICHITA, KANSAS

Designed by	CSB	Checked by	
Drawn by	DEP	Date	AUG. 1991
		Job No.	91314

151' C

**FILMED FROM THE BEST  
AVAILABLE COPY**