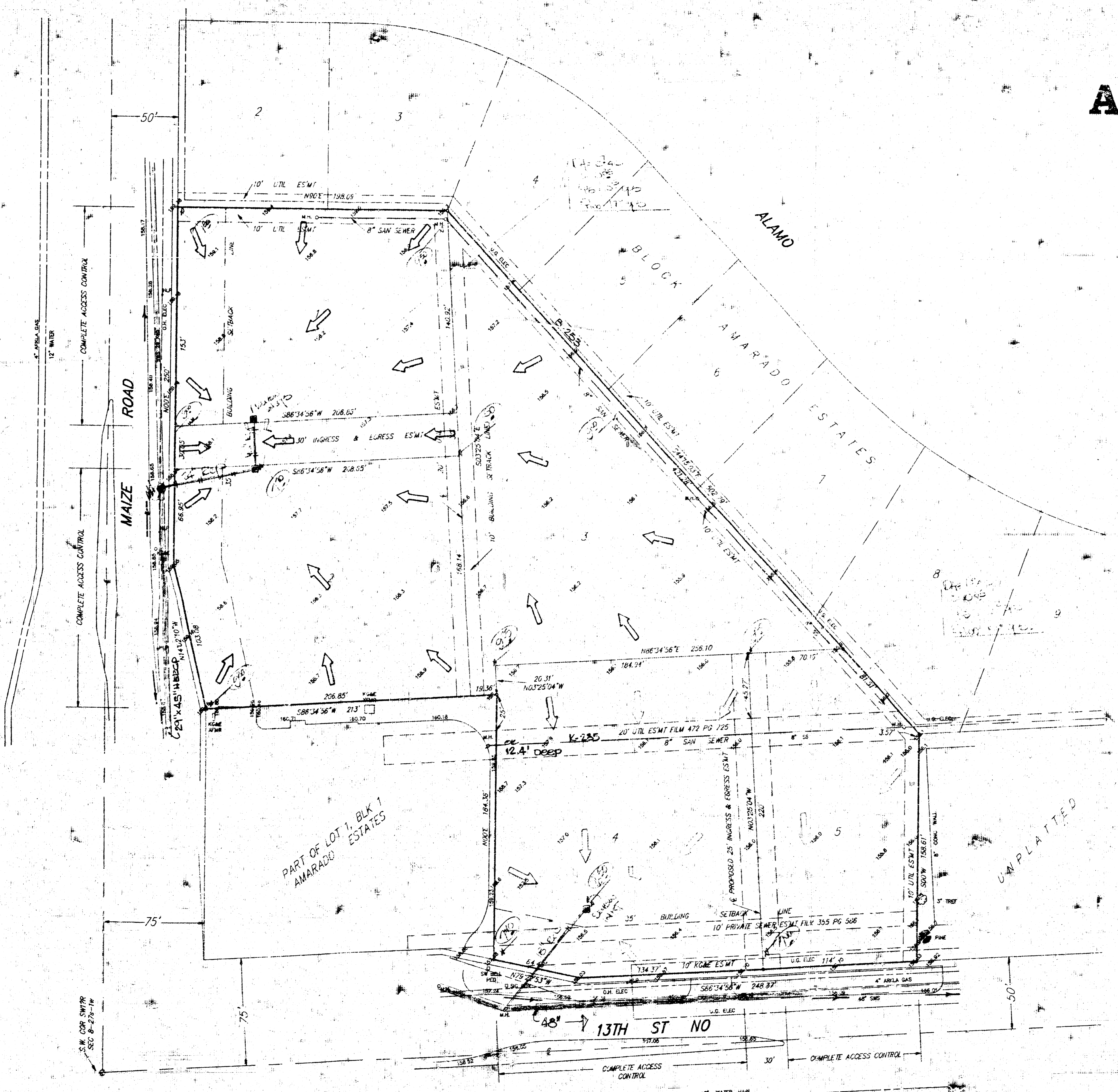


AMARADO ESTATES 4TH ADDITION

WICHITA, SEDGWICK COUNTY, KANSAS

PART OF LOT 1, BLOCK 1, AMARADO ESTATES AN ADDITION TO WICHITA,
SEDGWICK COUNTY, KANSAS.

R & S INVESTMENTS, A KANSAS PARTNERSHIP
LESLIE RUDD
2416 E. 37TH ST NO
WICHITA, KS 67219
838-7707



GENERAL NOTES
The proposed commercial lots will drain as indicated
to private storm sewers which can be extended to serve the
lots as development occurs on these lots. The proposed
storm sewers can be co-ordinated to be installed with the
site plan work in order to accommodate the developments.

All lots are presently served with public sanitary
sewer and water lines.

C-71
C-194 - 10-15-81
MP 12.6 TO 12.8

DRAINAGE PLAN

BAUGHMAN COMPANY P. A.
ENGINEERING & SURVEYING
346/282-7271 • 315 ELLIS • WICHITA, KANSAS 67211

4 APRIL 1991