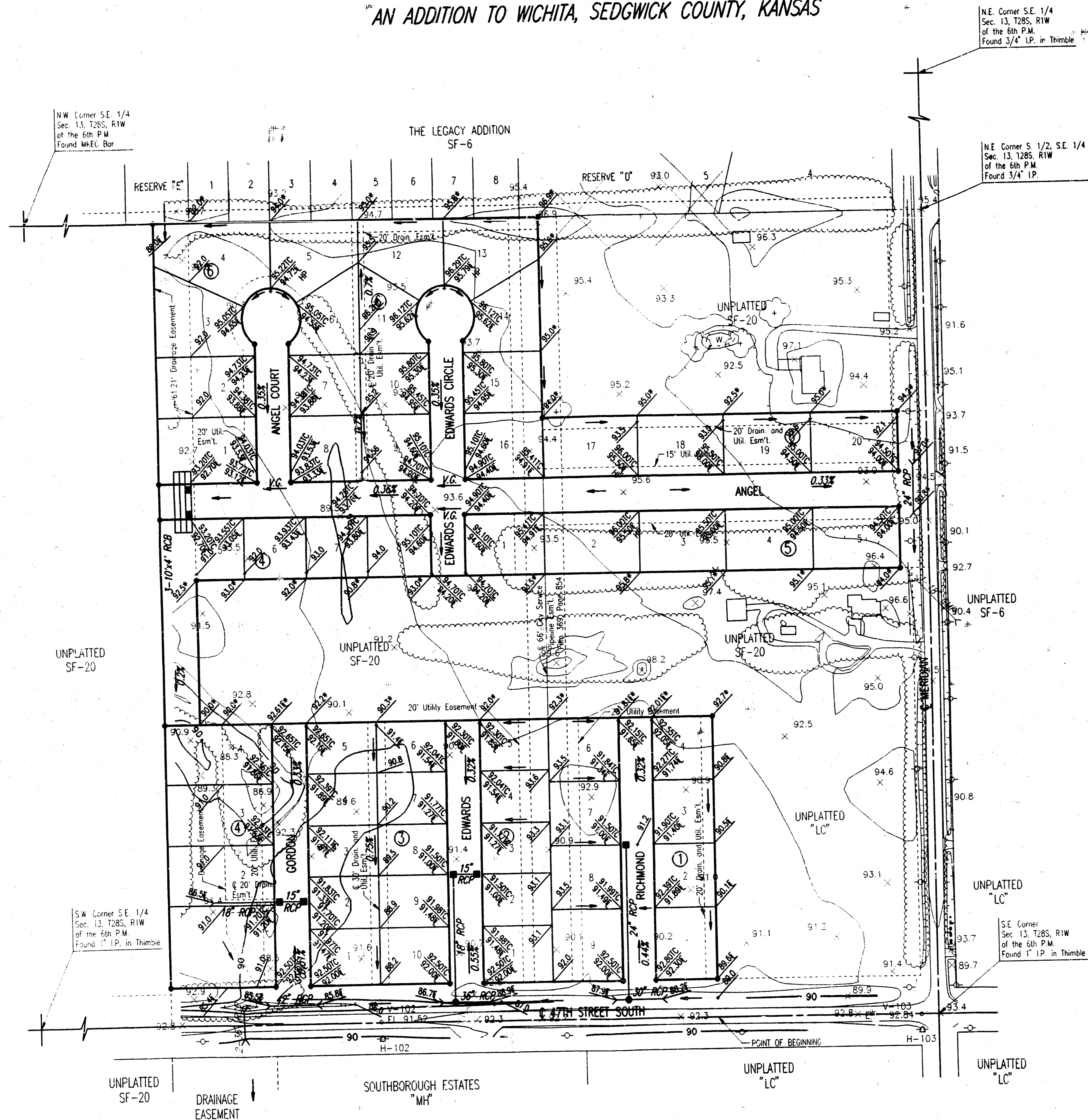


FOUR CORNER LOT GRADING ANGEL ACRES

AN ADDITION TO WICHITA, SEDGWICK COUNTY, KANSAS



N.E. Corner S.E. 1/4
Sec. 13, T28S, R1W
of the 6th P.M.
Found 3/4" I.P. in Thimble

N.W. Corner S.E. 1/4
Sec. 13, T28S, R1W
of the 6th P.M.
Found M&EC Bar

N.E. Corner S. 1/2, S.E. 1/4
Sec. 13, T28S, R1W
of the 6th P.M.
Found 3/4" I.P.

S.W. Corner S.E. 1/4
Sec. 13, T28S, R1W
of the 6th P.M.
Found 1" I.P. in Thimble

S.E. Corner
Sec. 13, T28S, R1W
of the 6th P.M.
Found 1" I.P. in Thimble

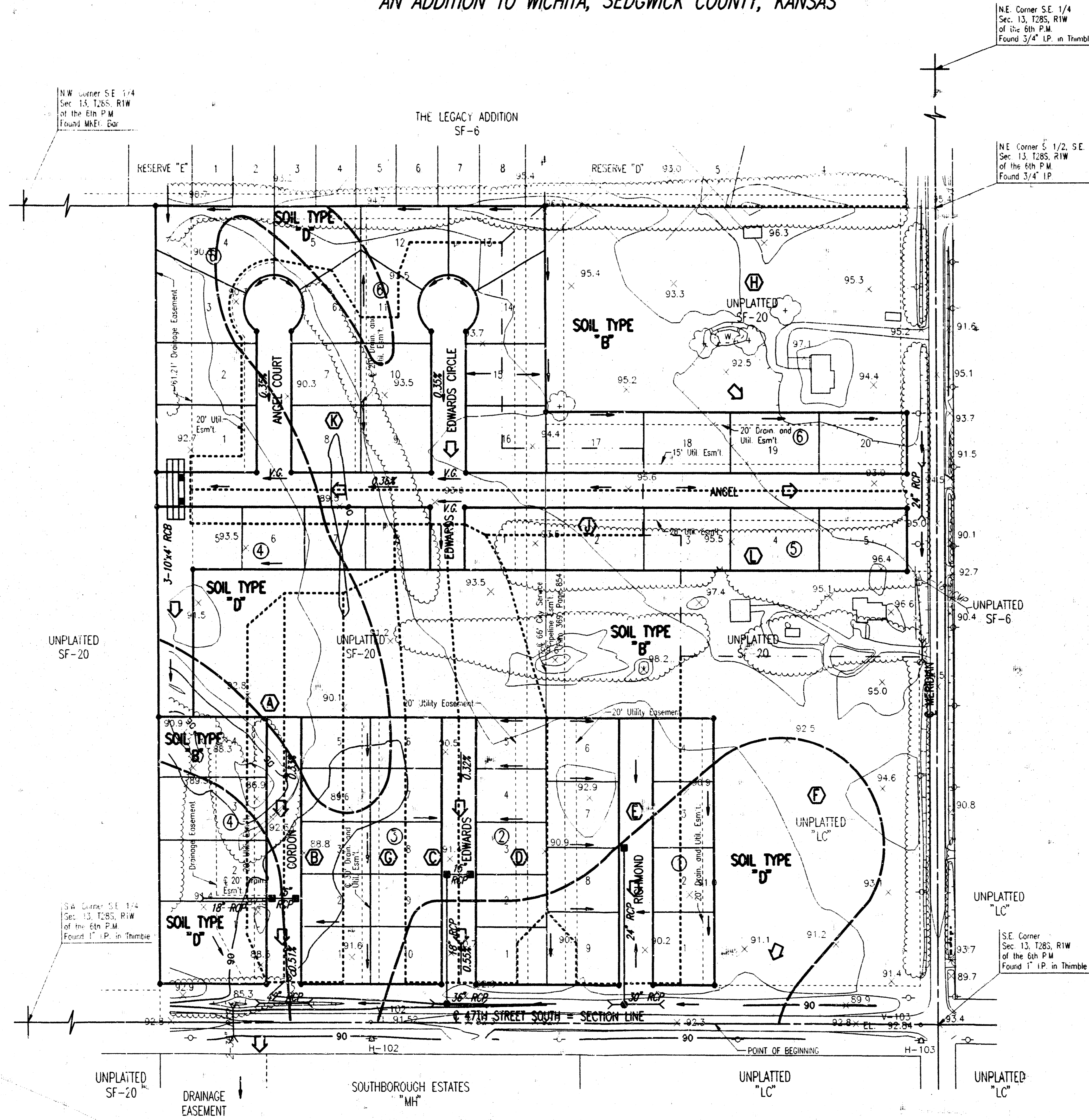
SCALE: 1"=100'
● = IRON SET

B.M. - CITY OF WICHITA STANDARD DISC, 44° NORTH AND 30° EAST
OF THE INTERSECTION OF THE CENTERLINES OF MERIDIAN
AND 47TH STREET SOUTH. ELEV.=91.777 CITY DATUM

- LEGEND**
- SPOT ELEVATION
 - HIGH POINT ELEVATION
 - MATCH EXISTING ELEVATION
 - TOP OF CURB ELEVATION
 - FLOW LINE ELEVATION
 - FLOW DIRECTION
 - MINIMUM PAD ELEVATION: LOTS 1-4, BLOCK 1 95.0 CITY DATUM
(MINIMUM OPENING) LOTS 1-9, BLOCK 2
LOTS 1-10, BLOCK 3
LOTS 1-8, BLOCK 4
LOT 1, BLOCK 5
LOTS 1-16, BLOCK 6
LOTS 2-5, BLOCK 5 96.0 CITY DATUM
LOTS 13-20, BLOCK 6

DSNR: KEB OPER: SJD SCALE: 1"=100.00
 01/19/98 08:59:53 CORNER: 02-18-1998 01:50:36 pm

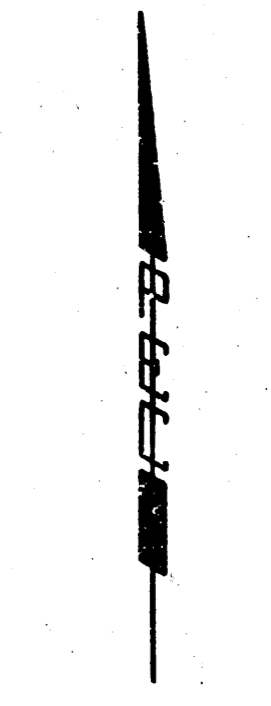
DRAINAGE PLAN
ANGEL ACRES
AN ADDITION TO WICHITA, SEDGWICK COUNTY, KANSAS



NE Corner SE 1/4
Sec. 13, T28S, R1W
of the 6th P.M.
Found 3/4" I.P. in Thumb

NW Corner SE 1/4
Sec. 13, T28S, R1W
of the 6th P.M.
Found 1" I.P. in Thumb

NE Corner S 1/2, SE 1/4
Sec. 13, T28S, R1W
of the 6th P.M.
Found 3/4" I.P.



SCALE: 1"=100'
● = IRON SET

B.M. - CITY OF WICHITA STANDARD DISC, 44" NORTH AND 30' EAST
OF THE INTERSECTION OF THE CENTERLINES OF MERIDIAN
AND 47TH STREET SOUTH. ELEV.=91.777 CITY DATUM

LEGEND

- SOIL GROUP BOUNDARY
- Ⓐ BASIN IDENTIFIER
- MINOR BASIN BOUNDARY
- MAJOR BASIN BOUNDARY
- ⬠ MAJOR STORM WATER OVERFLOW (0100)
- MINOR STORM WATER FLOW (02)
- STORM SEWER AND INLET
- STORM SEWER AND MANHOLE

STORM WATER TO BE ROUTED
TO MEDIDAN AND/OR 47TH STREET
SOUTH VIA DRIVES, FLUMES, STREETS,
PRIVATE STORM WATER SEWERS OR OTHER
APPROVED DRAINAGE DEVICES.

DSNR, KCB OPER. S&D SCALE: 1"=100.00
C-1396136896 DRAINAGE 02-18-1993 01:49:15 PM