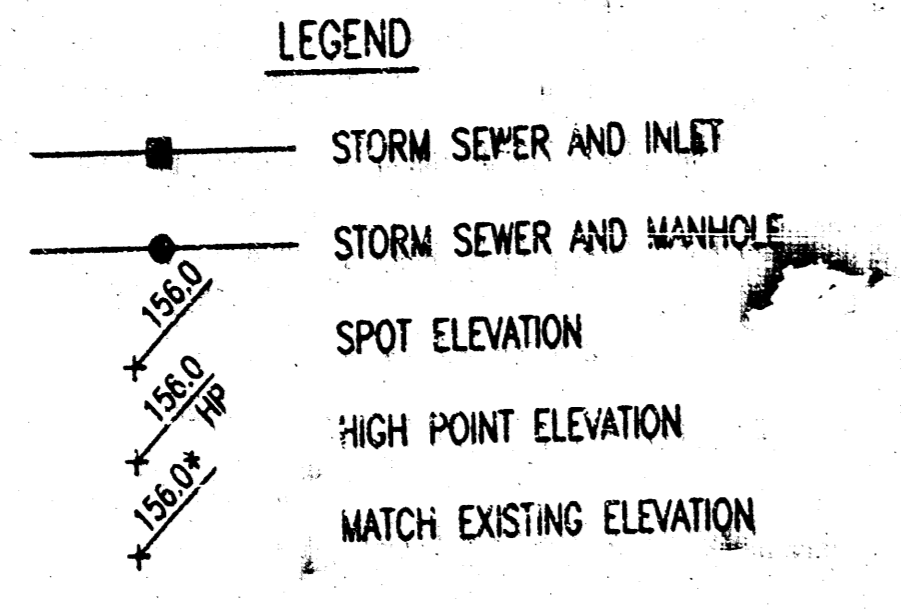


4-CORNER PLAN  
**ANGEL ACRES 2ND ADDITION**  
 TO WICHITA, SEDGWICK COUNTY, KANSAS



- BENCHMARK**
- BM-1 C.O.W. Disc 74" N. and 44" E. of the center intersection of Seneca and 47th St. Elevation=187.43
  - BM-2 Railroad Spike in W. face of Power Pole 30'± E. of S. of Seneca, 170'± N. of Sunrise. Elevation=184.79
  - BM-3 Railroad Spike in N. face of Light Pole on S.E. Cor. of Sunrise and Usage. Elevation=185.32
  - BM-4 Railroad Spike in S. face of Light Pole on S.E. Cor. of Sunrise and Sycamore Ave. Elevation=186.16
  - BM-5 Railroad Spike in E. face of Light Pole on N.W. Cor. of Sunrise and Gold. Elevation=187.44

SCALE: 1"=100'

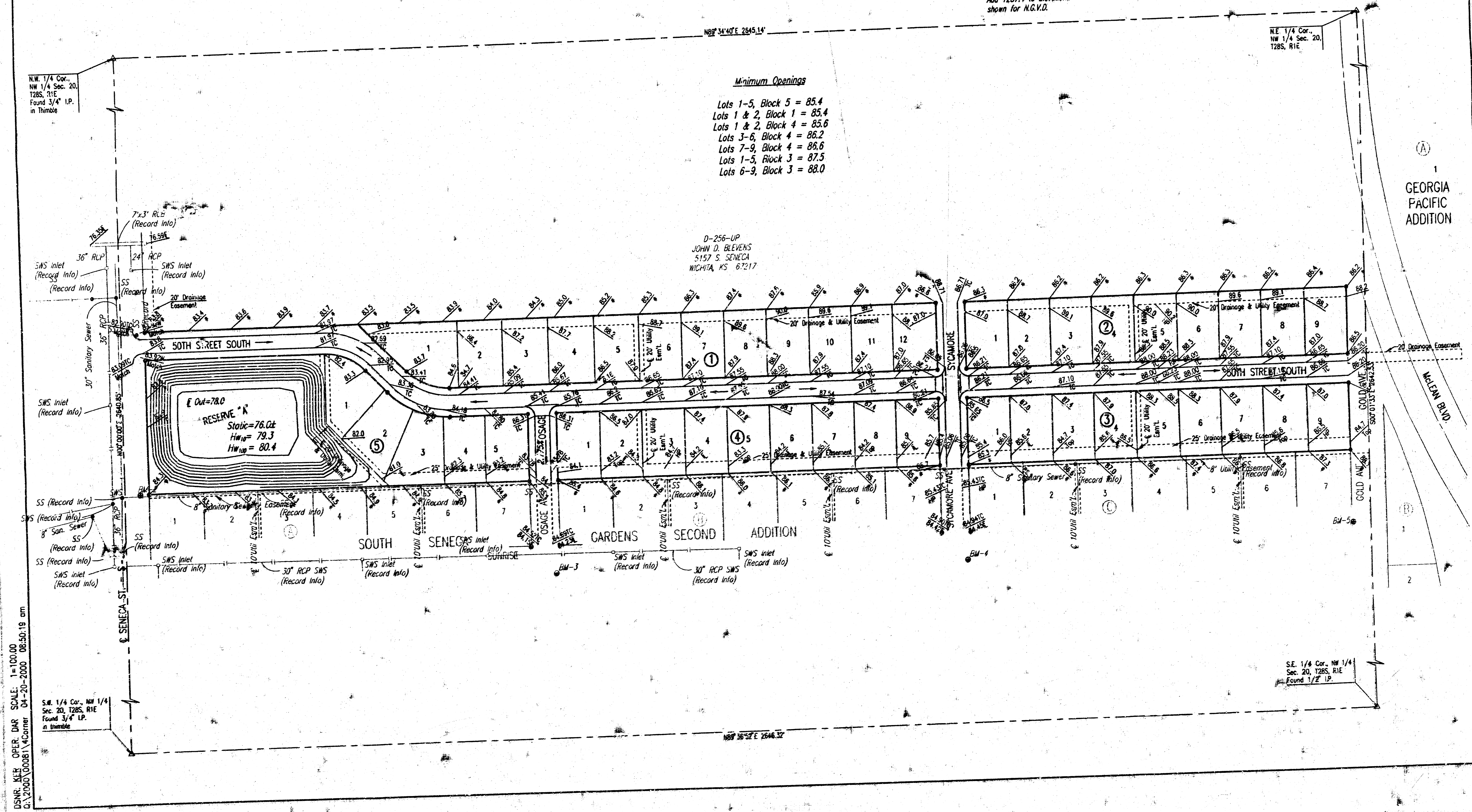
Add 100 to Elevations shown for City of Wichita Datum.  
 Add 1287.4 to Elevations shown for N.G.V.D.

N89°34'40"E 2845.14'

NE 1/4 Cor., NW 1/4 Sec. 20, T28S, R1E

- Minimum Openings**
- Lots 1-5, Block 5 = 85.4
  - Lots 1 & 2, Block 1 = 85.4
  - Lots 1 & 2, Block 4 = 85.6
  - Lots 3-6, Block 4 = 86.2
  - Lots 7-9, Block 4 = 86.6
  - Lots 1-5, Block 3 = 87.5
  - Lots 6-9, Block 3 = 88.0

D-256-UP  
 JOHN D. BLEVENS  
 5157 S. SENECA  
 WICHITA, KS 67217



DSUR, KEP, OPER, DAR SCALE: 1"=100.00  
 04-20-2000 06:50:19 am  
 S.W. 1/4 Cor., NW 1/4 Sec. 20, T28S, R1E  
 Found 3/4" LP. in Thimble

GEORGIA PACIFIC ADDITION

S.E. 1/4 Cor., NW 1/4 Sec. 20, T28S, R1E  
 Found 1/2" LP.