

DRAINAGE PLAN

ANGEL ACRES 2ND ADDITION

TO WICHITA, SEDGWICK COUNTY, KANSAS

- LEGEND**
- SA BASIN IDENTIFIER
 - MINOR BASIN BOUNDARY
 - MAJOR BASIN BOUNDARY
 - ⇨ MAJOR STORM WATER OVERTFLOW (Q100)
 - MAJOR STORM WATER FLOW (Q10)
 - STORM SEWER AND INLET
 - STORM SEWER AND MANHOLE
 - ⊖ STORM SEWER STRUCTURE NODE

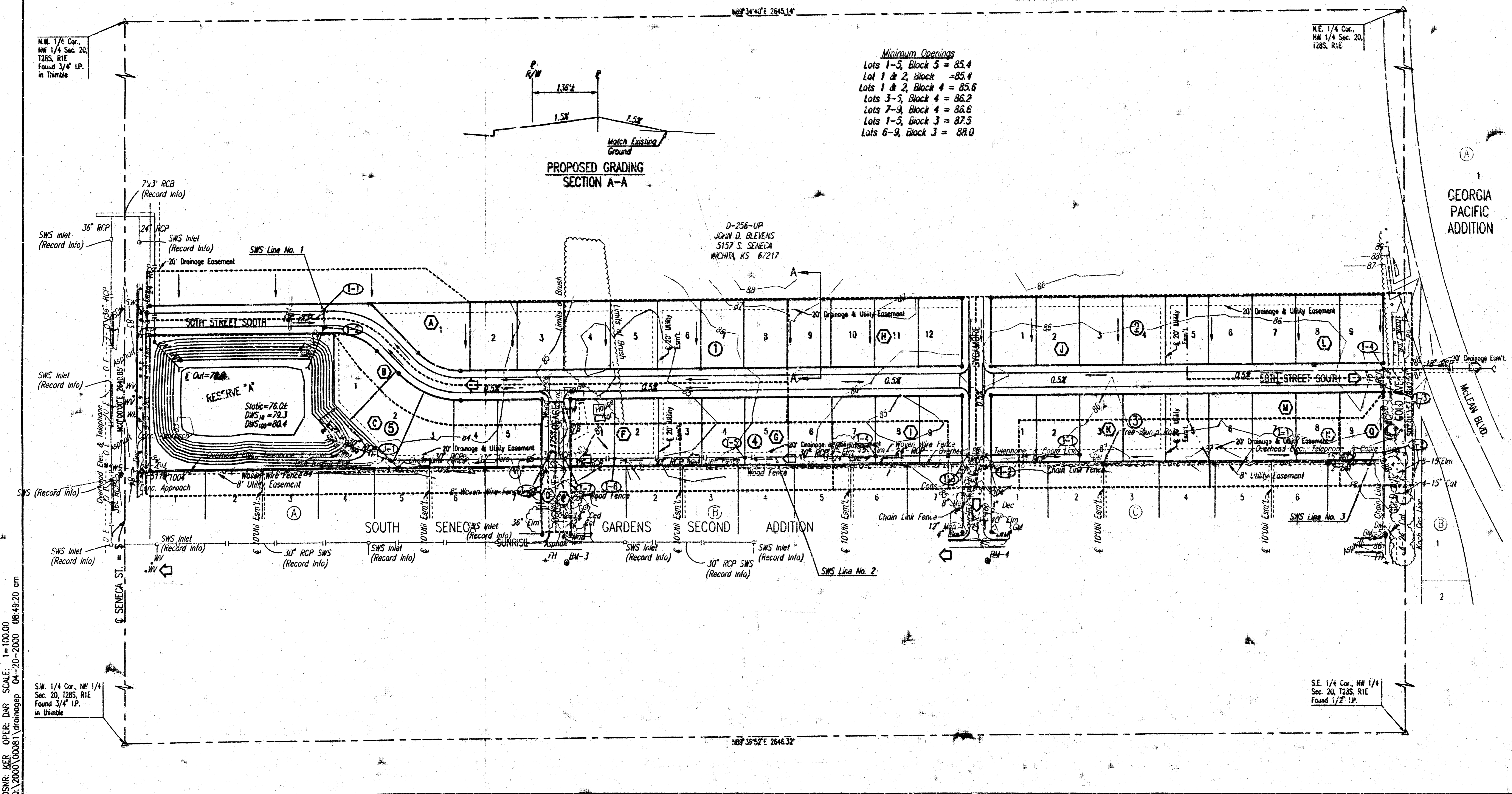
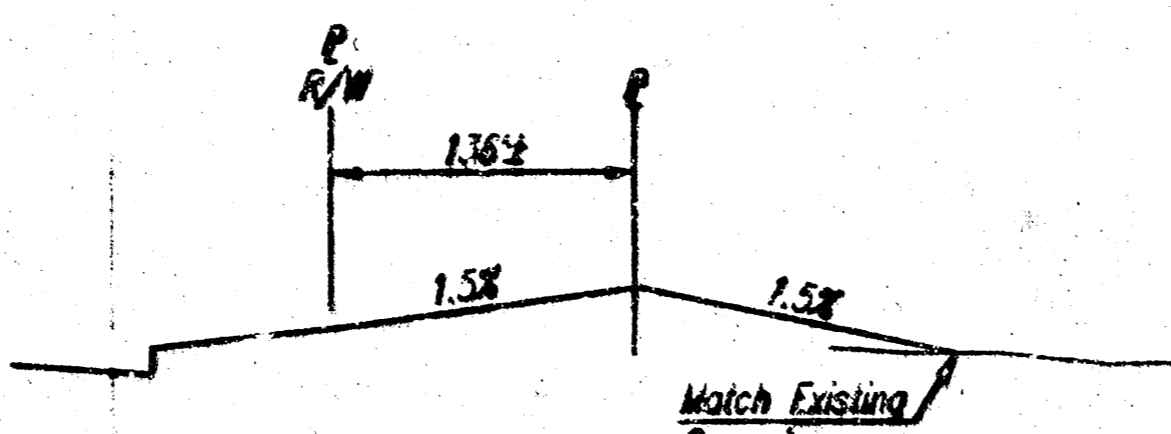
BENCHMARKS

- BM-1 C.O.M. Disc 74' N. and 44' E. of the center intersection of Seneca and 47th St. Elevation=187.43
- BM-2 Railroad Spike in W. face of Power Pole 30± E. of C. of Seneca, 170± N. of Sunrise. Elevation=184.79
- BM-3 Railroad Spike in N. face of Light Pole on S.E. Cor. of Sunrise and Osage. Elevation=185.32
- BM-4 Railroad Spike in S. face of Light Pole on S.E. Cor. of Sunrise and Sycamore Ave. Elevation=186.16
- BM-5 Railroad Spike in E. face of Light Pole on N.W. Cor. of Sunrise and Gold. Elevation=187.44

SCALE: 1"=100'
 Add 100 to Elevations shown for City of Wichita Datum
 Add 12.874 to Elevations shown for M.G.V.D.

- Minimum Openings**
- Lots 1-5, Block 5 = 85.4
 - Lot 1 & 2, Block = 85.4
 - Lots 1 & 2, Block 4 = 85.6
 - Lots 3-5, Block 4 = 86.2
 - Lots 7-9, Block 4 = 86.6
 - Lots 1-5, Block 3 = 87.5
 - Lots 6-9, Block 3 = 88.0

PROPOSED GRADING SECTION A-A



GEORGIA PACIFIC ADDITION

DSNR: KKR OPER: DNR SCALE: 1"=100.00
 C:\2000\00081\drainagep 04-20-2000 08:49:20 am

S.W. 1/4 Cor. NW 1/4 Sec. 20, T28S, R1E Found 3/4" I.P. in Thumb

S.E. 1/4 Cor. NW 1/4 Sec. 20, T28S, R1E Found 1/2" I.P.

N89°34'47"E 2845.14'

N89°36'52"E 2646.32'

D-256-UP
 JOHN D. BLEVENS
 5157 S. SENECA
 WICHITA, KS 67217