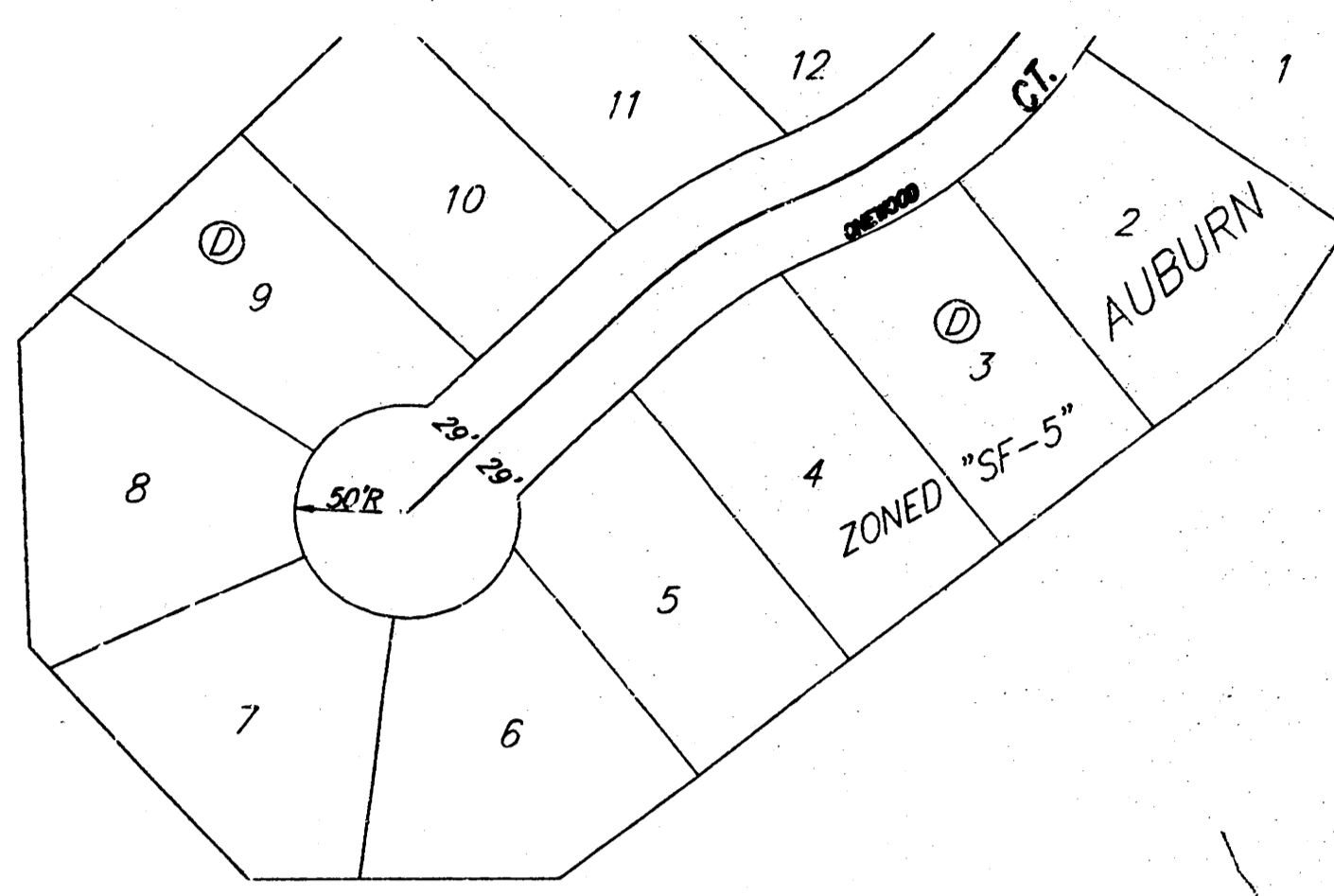
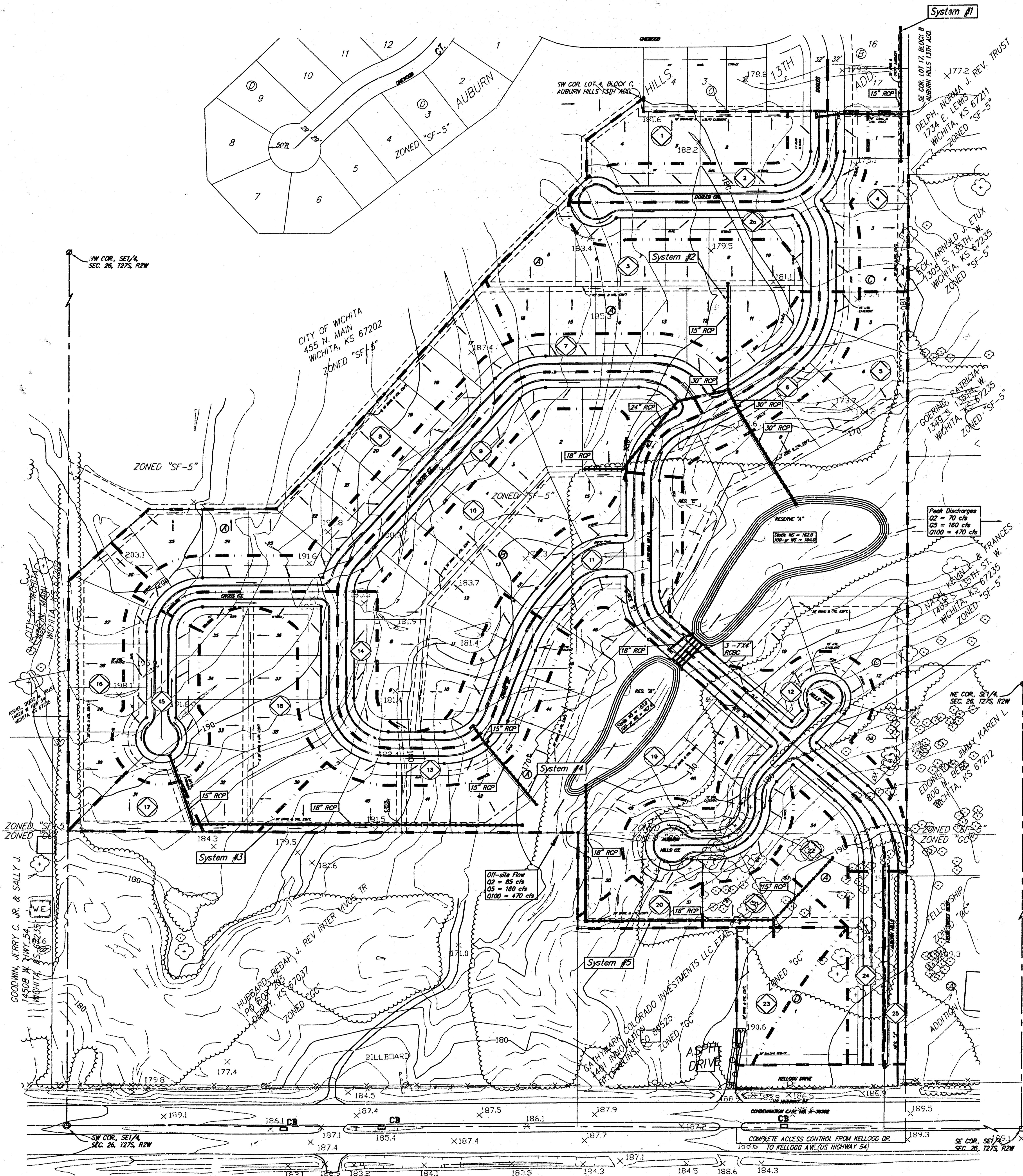


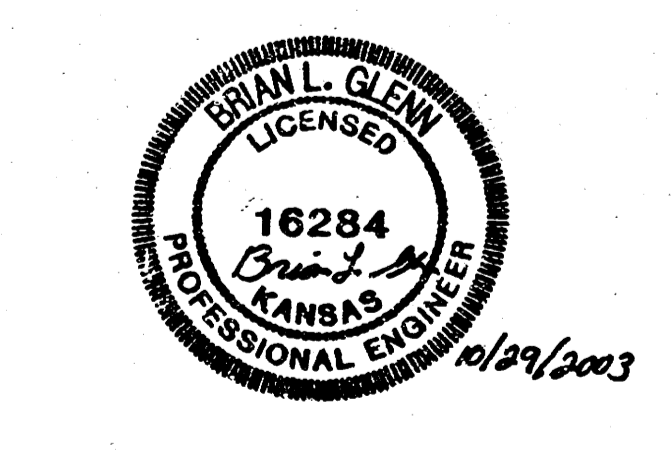
DRAINAGE PLAN

AUBURN HILLS 15TH ADDITION

WICHITA, SEDGWICK COUNTY, KANSAS

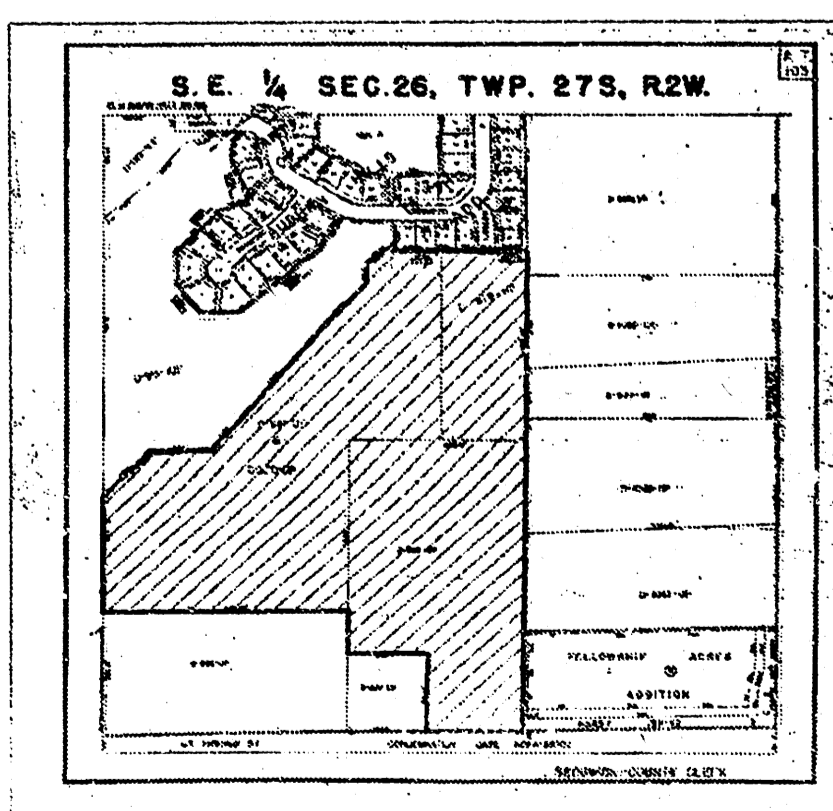
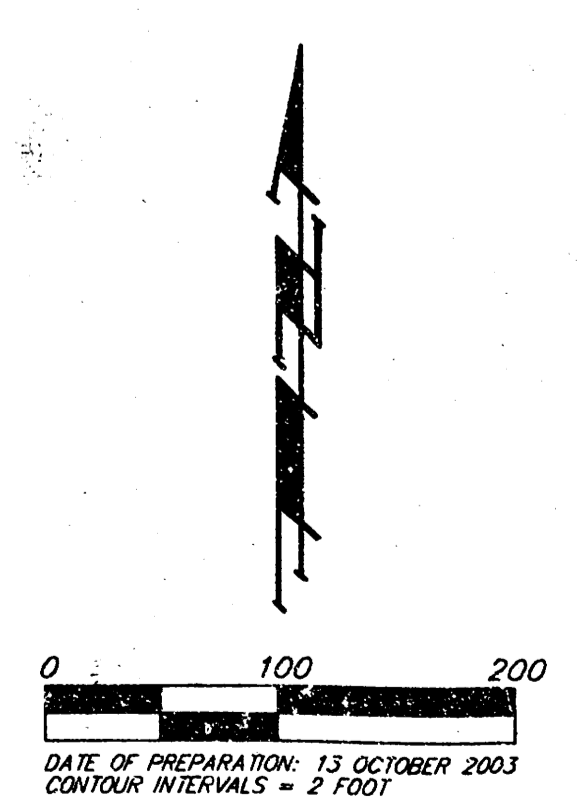


Basin ID	Area acres	C2 in/hr	C5 in/hr	C100 in/hr	Q2 cfs	Q5 cfs	Q100 cfs
1	0.9	0.52	0.54	0.67	1.8	2.2	4.4
2	1.2	0.52	0.54	0.67	2.4	3.0	5.9
2a	1.4	0.52	0.54	0.67	2.8	3.4	6.9
3	2.7	0.52	0.54	0.67	5.4	6.6	13.3
4	0.8	0.52	0.54	0.67	1.8	2.0	4.0
5	6.8	0.52	0.54	0.67	13.5	16.7	33.6
6	1.0	0.52	0.54	0.67	2.0	2.5	4.9
7	2.8	0.52	0.54	0.67	5.6	6.9	13.8
8	2.2	0.52	0.54	0.67	4.4	5.4	10.9
9	1.7	0.52	0.54	0.67	3.4	4.2	8.4
10	3.3	0.52	0.54	0.67	6.6	8.1	16.3
11	3.3	0.52	0.54	0.67	6.6	8.1	16.3
12	1.9	0.52	0.54	0.67	3.8	4.7	9.4
13	1.9	0.52	0.54	0.67	3.8	4.7	9.4
14	1.2	0.52	0.54	0.67	2.4	3.0	5.9
15	1.2	0.52	0.54	0.67	2.4	3.0	5.9
16	1.2	0.52	0.54	0.67	2.4	3.0	5.9
17	0.5	0.52	0.54	0.67	1.0	1.2	2.5
18	2.0	0.52	0.54	0.67	4.0	4.9	9.9
19	4.5	0.52	0.54	0.67	9.0	11.1	22.2
20	0.4	0.52	0.54	0.67	0.8	1.0	2.0
21	0.6	0.52	0.54	0.67	1.2	1.5	3.0
22	0.5	0.52	0.54	0.67	1.0	1.2	2.5
23	1.4	0.52	0.54	0.67	2.8	3.4	6.9
24	0.7	0.52	0.54	0.67	1.4	1.7	3.5
25	0.4	0.52	0.54	0.67	0.8	1.0	2.0



BENCH MARK:
 CITY DISC - 34.3' E. & 3.3' N. OF
 SW CORNER OF HWY 1/4, SEC. 26,
 T-27-S, R-2-W
 ELEV. = 156.83 CITY DATUM
 1344.03 M.S.L.

LOT	BLOCK	ELEVATION CITY DATUM
42-50	A	172.0
6-12	C	172.0



Revised 29 OCTOBER 2003
 13 OCTOBER 2003

BAUGHMAN COMPANY P.A.
 ENGINEERING, SURVEYING, & PLANNING

316-262-7271 • 315 ELLIS • WICHITA, KANSAS 67211
 7-15-17 (10/2003) (15/2003) (15/2003) (15/2003)