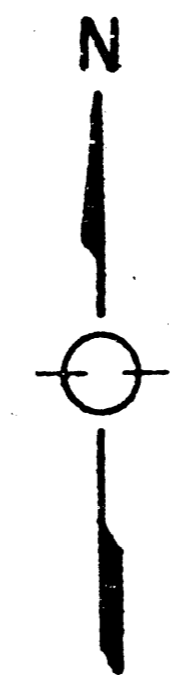


PRELIMINARY PLAT
BADER 3RD ADDITION

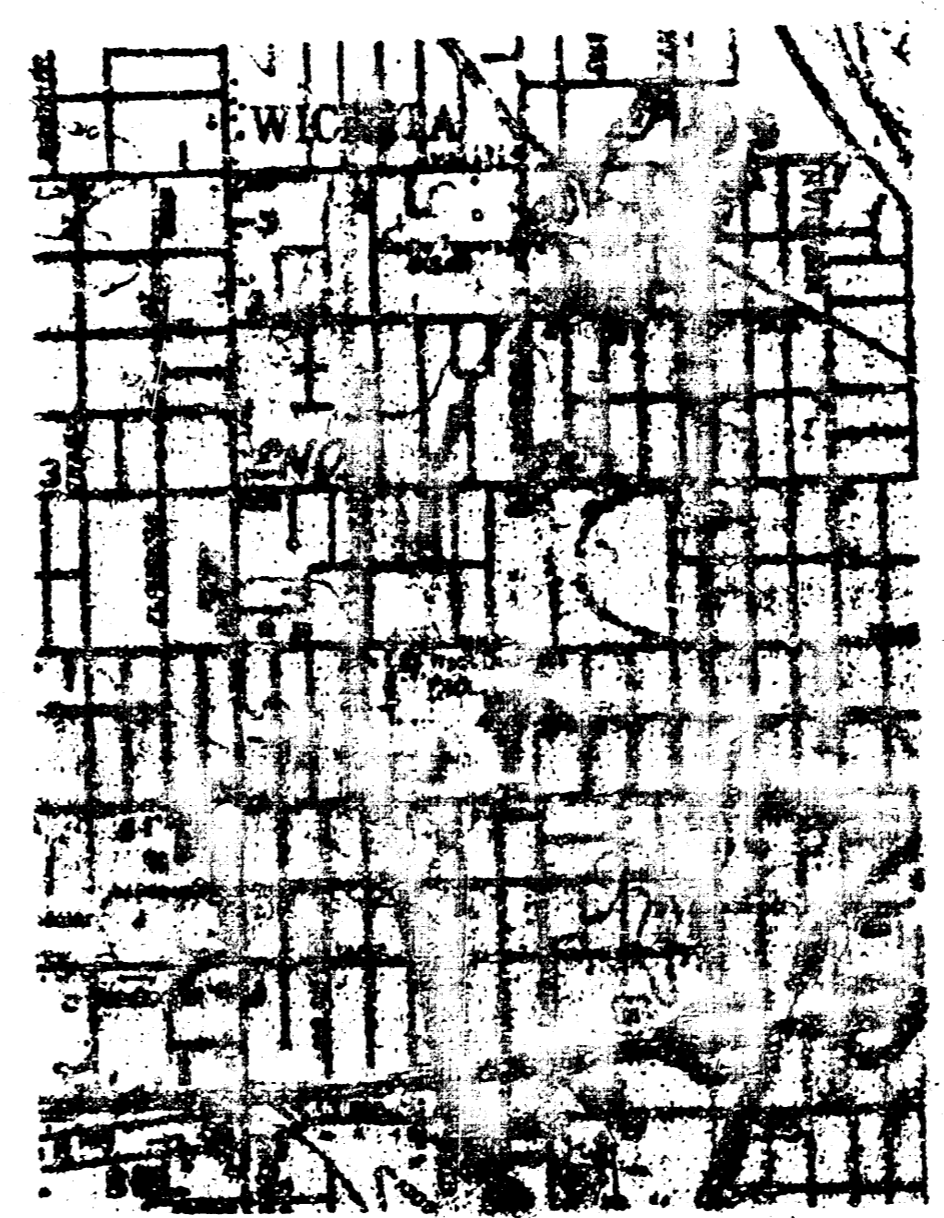
PART OF THE S.W. 1/4
SEC. 24, TWP. 27-S, R-1-W W.

GERALD BADER

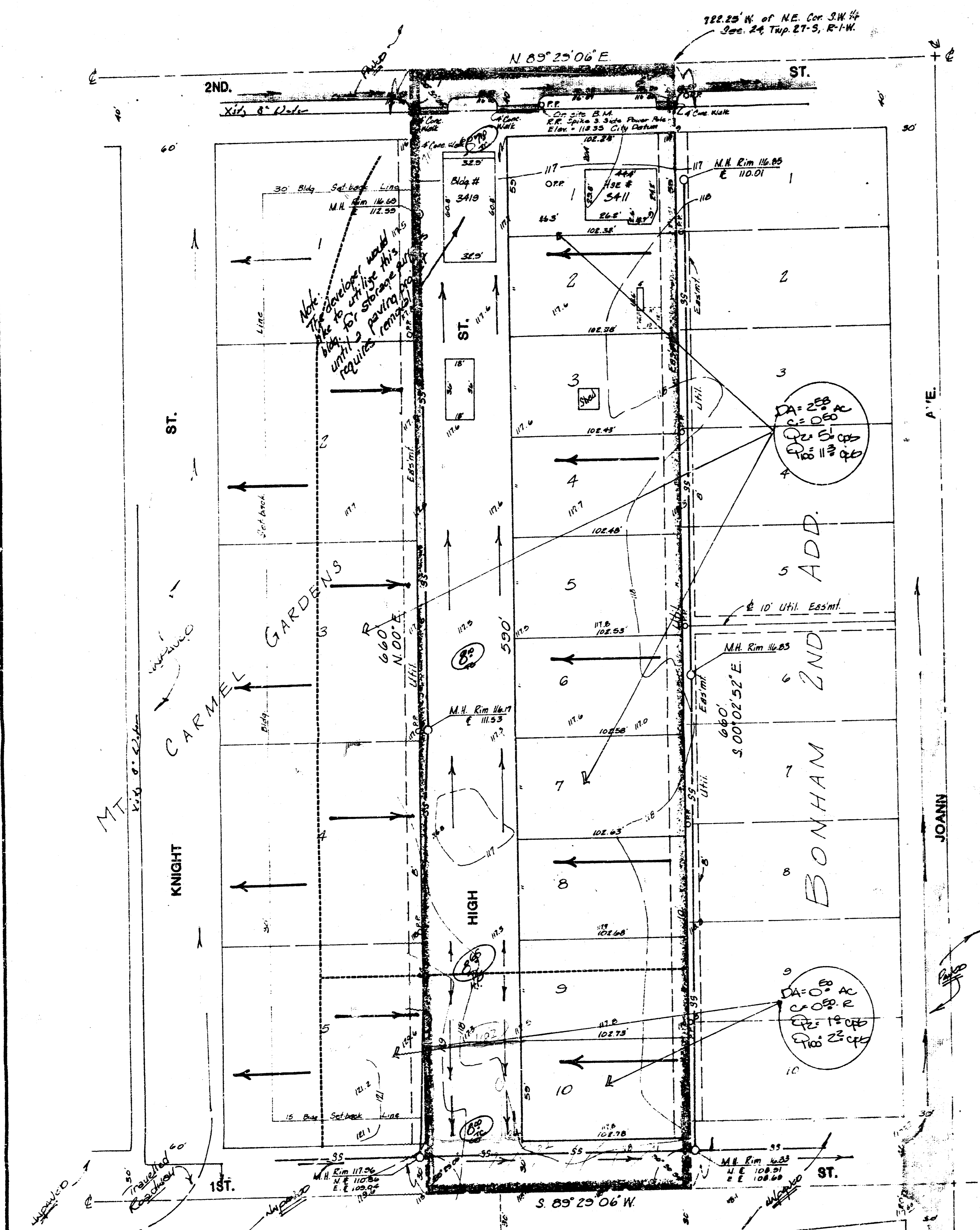


Scale: 1" = 40'
Elevation - City Datum

BENCH MARK
City Standard Disc 34 W
4 1/2' S of Q West St
and 2nd S
Elevation - 118.87 City Datum



V. HARRISON
1" = 200'



General Notes

The lots are residential and will drain to the streets discharging thru driveways. High Street when paved will drain as the proposed grades will allow. Joann and 2nd Streets are paved and drain north and east, respectively. Knight is unpaved and drains north to 2nd Street. 1st Street is unpaved and is presently unpaved and will drain east to Joann when paved and opened to traffic.

HOWARD V. HARRISON
2ND ADD.

Void

DRAINAGE PLAN

6-10-25

BAUGHMAN COMPANY, P.A.
SURVEYING & ENGINEERING
1000 ...

FILMED FROM THE BEST
AVAILABLE COPY