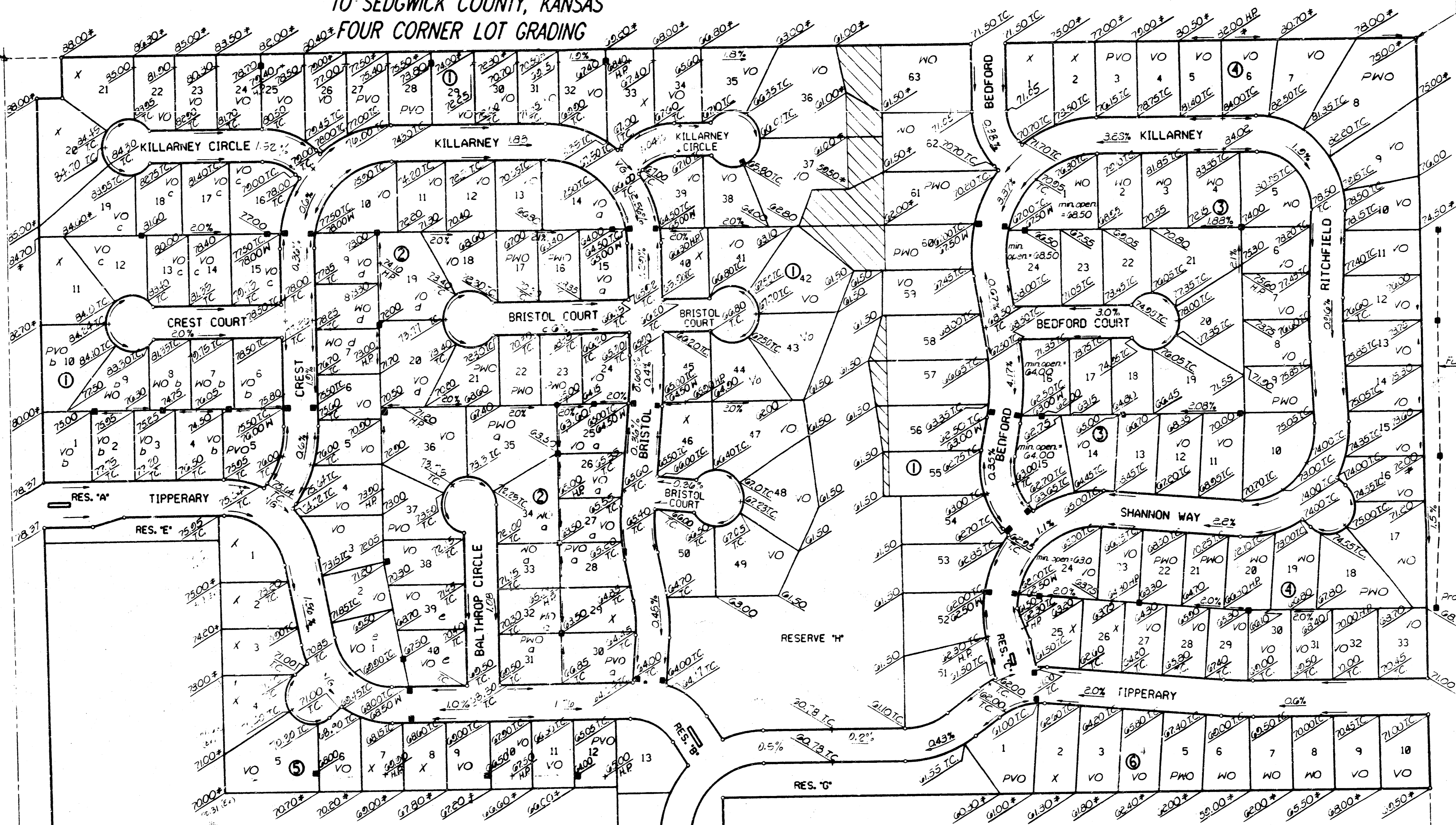


**BALTHROP ADDITION  
TO SEDGWICK COUNTY, KANSAS  
FOUR CORNER LOT GRADING**

N.W. Corner, S.W. 1/4  
Sec. 15, T27S, R2E  
of the 6th P.M.  
Ed. 11 P.

N.E. Corner, S.W. 1/4  
Sec. 15, T27S, R2E  
of the 6th P.M.  
Ed. 11 P.



SCALE: 1"=20'  
IRON SET  
BSL - BUILDING SETBACK LINE  
CAC - COMPLETE ACCESS CONTROL  
REVISED 2-13-96

DRAINAGE EASEMENT

B.M. - CHISELED "P" IN CENTER CONCRETE HEADWALL TO R.C.B.  
24.5' SOUTH AND 56.7' WEST OF THE INTERSECTION OF THE  
CENTERLINES OF CENTRAL AND GREENWICH.  
ELEV. 188.828 CITY DATUM  
MINIMUM PAD ELEVATIONS (LOWEST OPENING) AS FOLLOWS:

Revised 2-13-96  
Revised 11-12-96

**APPROVED  
DRAINAGE PLAN**

- LEGEND**
- Drainage Easement
  - Elevation (Add 1000 for M.S.L. Datum.)
  - Elevation Existing
  - Walk Grade Elevation
  - Top of Curb Elevation
  - High Point Elevation
  - View-out Basement allowed
  - Walk-out Basement allowed
  - Possible View-out Basement Lot
  - Possible Walk-out Basement Lot
  - Minimum opening for View-out or Walk-out = 3600
  - Minimum opening for View-out or Walk-out = 3770
  - Minimum opening for View-out or Walk-out = 3790
  - Minimum opening for View-out or Walk-out = 3740
  - Minimum opening for View-out or Walk-out = 3695
  - Minimum opening for Lots 36 thru 63 = 3620
  - Minimum opening for Lots 14 & 15 = 3620

Future

Provide overflow  
to East