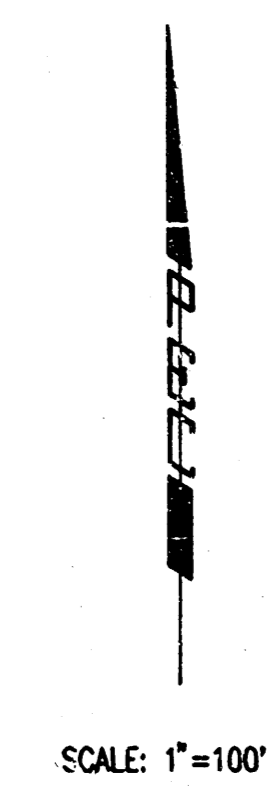


DRAINAGE PLAN FOR  
**BALTHROP 4TH ADDITION**  
 TO WICHITA, SEDGWICK COUNTY, KANSAS  
 PART OF SE 1/4 SEC. 15, T 27S, R2E.

- NOTES
- BRACKEN/TIPPERARY/WHITE TAIL LOOP USES 6 5/8" CURB AND 0.7' WALK GRADE.
  - OTHER STREETS ARE 3 5/8" CURB AND 0.4' WALK GRADE.
  - ALL PIPES AND BOX CULVERTS CONCRETE (n=0.013)



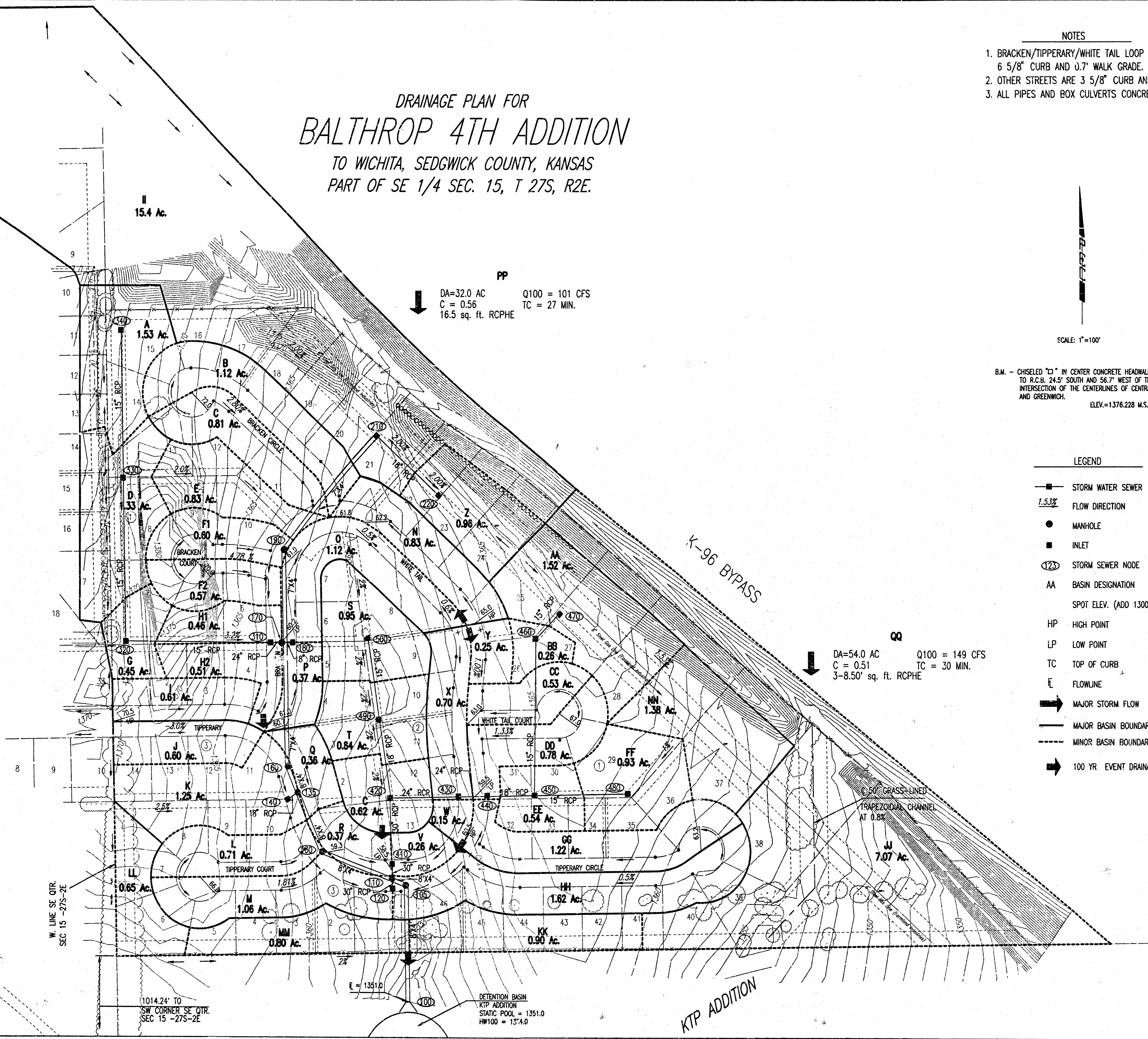
B.M. - CHISELED "C" IN CENTER CONCRETE HEADWALL TO R.C.B. 24.5' SOUTH AND 56.7' WEST OF THE INTERSECTION OF THE CENTERLINES OF CENTRAL AND GREENWICH.  
 ELEV.=1376.228 M.S.L.

LEGEND

- STORM WATER SEWER
- 1.53% FLOW DIRECTION
- MANHOLE
- INLET
- ⊙ STORM SEWER NODE
- AA BASIN DESIGNATION
- SPOT ELEV. (ADD 1300 FOR MSL)
- HP HIGH POINT
- LP LOW POINT
- TC TOP OF CURB
- ℓ FLOWLINE
- ➔ MAJOR STORM FLOW
- MAJOR BASIN BOUNDARY
- - - MINOR BASIN BOUNDARY
- ➔ 100 YR EVENT DRAINAGE

PP  
 DA=32.0 AC    Q100 = 101 CFS  
 C = 0.56    TC = 27 MIN.  
 16.5 sq. ft. RCPHE

QQ  
 DA=54.0 AC    Q100 = 149 CFS  
 C = 0.51    TC = 30 MIN.  
 3-8.50' sq. ft. RCPHE



SEE SUPPORTING CALCULATIONS FOR HYDROLOGY

*Michael W. Deery*  
 1-29-02

DSNR: OPER: MWN SCALE: 1"=100.00  
 F:\2001\01545 (Wg) FINAL\drain\_plan\_01-29-2002\_03:33:34\_pm