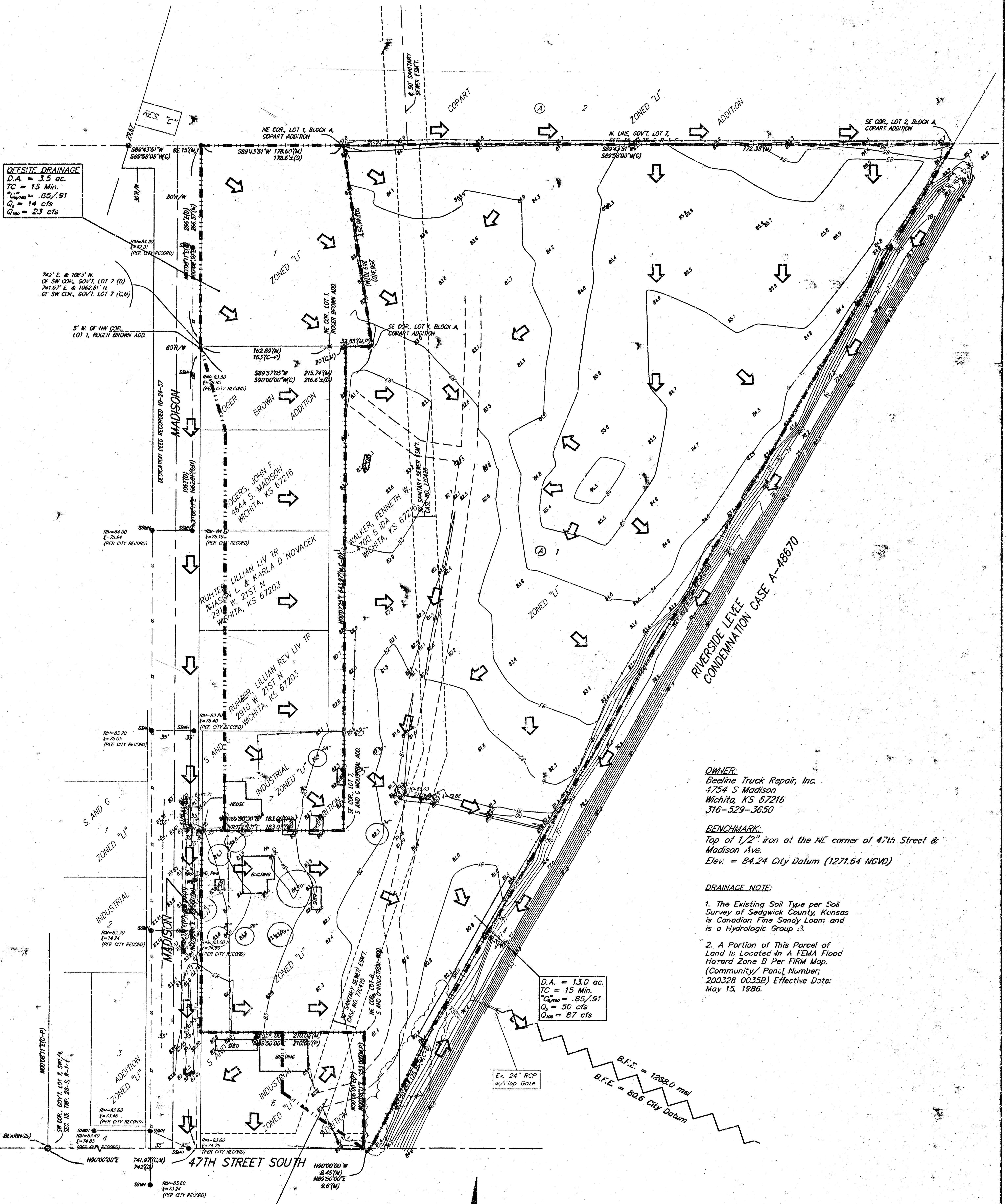


DRAINAGE PLAN BEELINE ADDITION WICHITA, SEDGWICK COUNTY, KANSAS



OFFSITE DRAINAGE
D.A. = 3.5 ac.
TC = 15 Min.
 $C_{100} = .65/.91$
 $Q_{100} = 14$ cfs
 $Q_{500} = 23$ cfs

D.A. = 13.0 ac.
TC = 15 Min.
 $C_{100} = .65/.91$
 $Q_{100} = 50$ cfs
 $Q_{500} = 87$ cfs

OFFSITE DRAINAGE
D.A. = 0.3 ac.
TC = 15 Min.
 $C_{100} = .65/.91$
 $Q_{100} = 1.2$ cfs
 $Q_{500} = 2.0$ cfs

OWNER:
Beeline Truck Repair, Inc.
4754 S Madison
Wichita, KS 67216
316-529-3650

BENCHMARK:
Top of 1/2" iron at the NE corner of 47th Street & Madison Ave.
Elev. = 84.24 City Datum (1271.64 NCWD)

DRAINAGE NOTE:
1. The Existing Soil Type per Soil Survey of Sedgwick County, Kansas is Canadian Fine Sandy Loam and is a Hydrologic Group 3.
2. A Portion of This Parcel of Land is Located in a FEMA Flood Hazard Zone B Per FIRM Map. (Community/ Panel Number: 200328 0035E) Effective Date: May 15, 1986.

B.F.E. = 1268.0 ml
B.F.E. = 80.6 City Datum

- #4 REBAR W/ "BAUGHMAN" CAP (SET)
 - FLOOD CONTROL MONUMENT (FOUND)
 - × #4 REBAR (FOUND)
 - STONE (FOUND)
 - 3/4" IRON W/ "PEC" CAP (FOUND)
 - × #5 REBAR W/ "AMPE" CAP (FOUND)
 - × #5 REBAR W/ "ACLS" CAP (FOUND)
 - 1" IRON (FOUND)
 - 3/4" IRON W/ TRIMBLE (FOUND)
- (M) = MEASURED
(D) = DESCRIBED
(C) = CALCULATED
(P) = PLATTED
(C-D) = CALCULATED PER DISCOVERED INFO.
(C-P) = CALCULATED PER PLATTED INFO.

- ○ = Cleverly
- ○ = Electric Box
- ○ = Fire Hydrant
- ○ = Gas Meter
- ○ = Hand Light
- ○ = Mail Box
- ○ = Power Pole
- ○ = Sanitary Sewer Manhole
- ○ = Southwestern Bell Pedestal
- ○ = Tree
- ○ = Water Meter
- ○ = Water Valve

