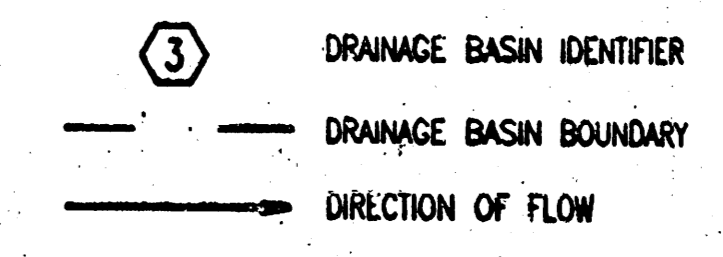


N.W. Corner
Sec. 8, T27S, R2E
of the 6th P.M.

N.E. Corner, N.W. 1/4
Sec. 8, T27S, R2E
of the 6th P.M.

SCALE: 1"=100'
DATE: JAN. 17, 1997

- B.M. - CITY OF WICHITA B.M. DISC. 45' NORTH AND 48' EAST OF THE INTERSECTION OF THE CENTERLINES OF 21ST STREET NORTH AND ROCK ROAD. ELEV.=214.568 CITY DATUM
- B.M. - CHISELED "P" ON TOP OF CURB 70'+ SOUTH OF SOUTHEAST CORNER "OUTBACK STEAMHOUSE" BLDG., NORTH SIDE LOT 1, BLOCK 1, BRADLEY FAIR 2ND ADDITION. ELEV.=211.62 CITY DATUM
- B.M. - RAILROAD SPIKE IN WEST FACE 12' ELM, 80' EAST AND 120' NORTH OF NORTHWEST CORNER RESERVE "A", BRADLEY FAIR 2ND ADDITION. ELEV.=204.49 CITY DATUM



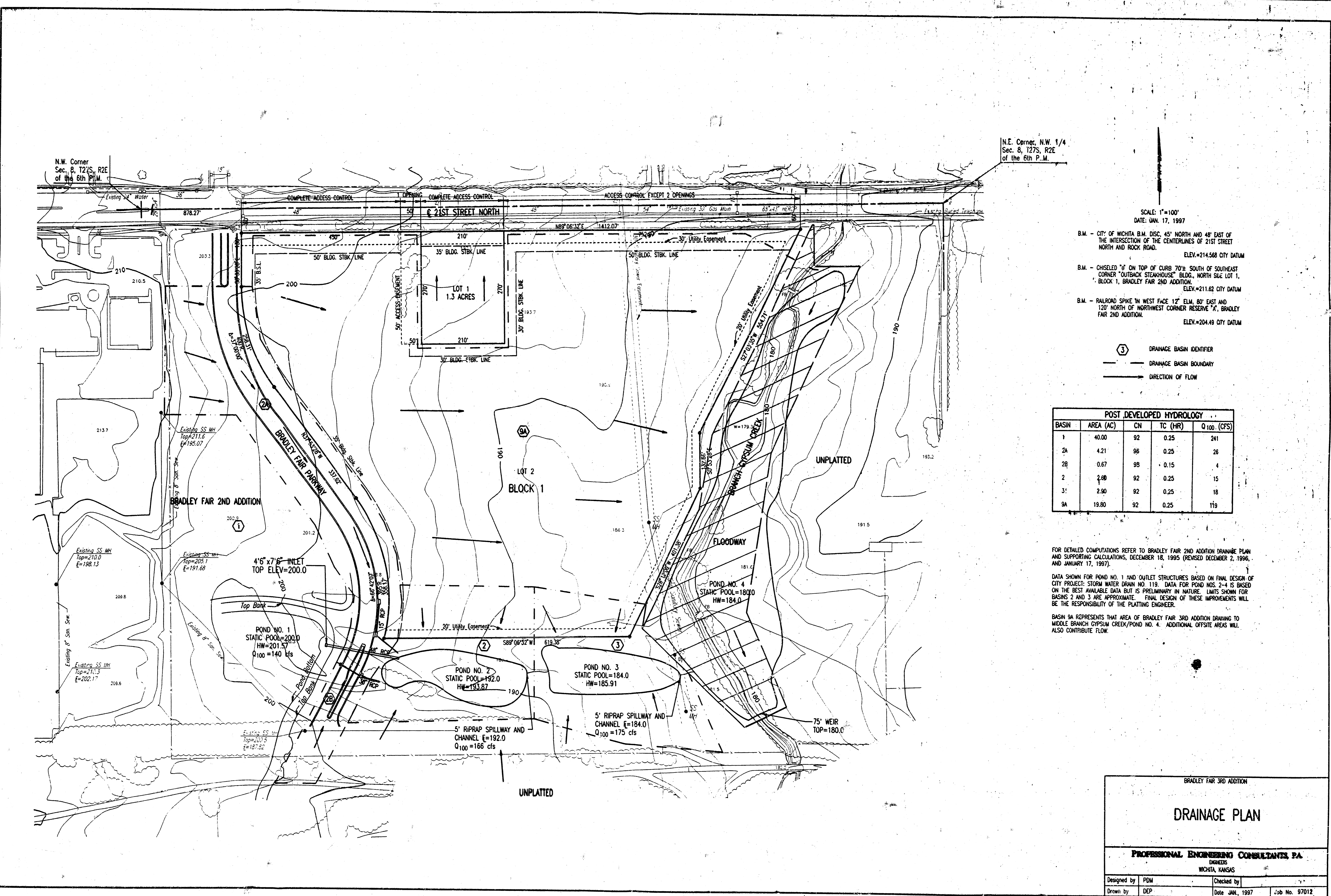
POST DEVELOPED HYDROLOGY				
BASIN	AREA (AC)	CN	TC (HR)	Q ₁₀₀ (CFS)
1	40.00	92	0.25	241
2A	4.21	96	0.25	26
2B	0.67	98	0.15	4
2	2.68	92	0.25	15
3'	2.90	92	0.25	18
9A	19.80	92	0.25	119

FOR DETAILED COMPUTATIONS REFER TO BRADLEY FAIR 2ND ADDITION DRAINAGE PLAN AND SUPPORTING CALCULATIONS, DECEMBER 18, 1995 (REVISED DECEMBER 2, 1996, AND JANUARY 17, 1997).

DATA SHOWN FOR POND NO. 1 AND OUTLET STRUCTURES BASED ON FINAL DESIGN OF CITY PROJECT: STORM WATER DRAIN NO. 119. DATA FOR POND NOS. 2-4 IS BASED ON THE BEST AVAILABLE DATA BUT IS PRELIMINARY IN NATURE. LIMITS SHOWN FOR BASINS 2 AND 3 ARE APPROXIMATE. FINAL DESIGN OF THESE IMPROVEMENTS WILL BE THE RESPONSIBILITY OF THE PLATTING ENGINEER.

BASIN 9A REPRESENTS THAT AREA OF BRADLEY FAIR 3RD ADDITION DRAINING TO MIDDLE BRANCH GYPSUM CREEK/POND NO. 4. ADDITIONAL OFFSITE AREAS WILL ALSO CONTRIBUTE FLOW.

DSNR: PDM OPER. DEP. SCALE: 1"=100.00
 01/1997/S7012/DRAINPLAN.DWG 01-17-1997 9:31:19 am



BRADLEY FAIR 3RD ADDITION

DRAINAGE PLAN

PROFESSIONAL ENGINEERING CONSULTANTS, P.A.
ENGINEERS
WICHITA, KANSAS

Designed by	PDM	Checked by	
Drawn by	DEP	Date	JAN, 1997
		Job No.	97012