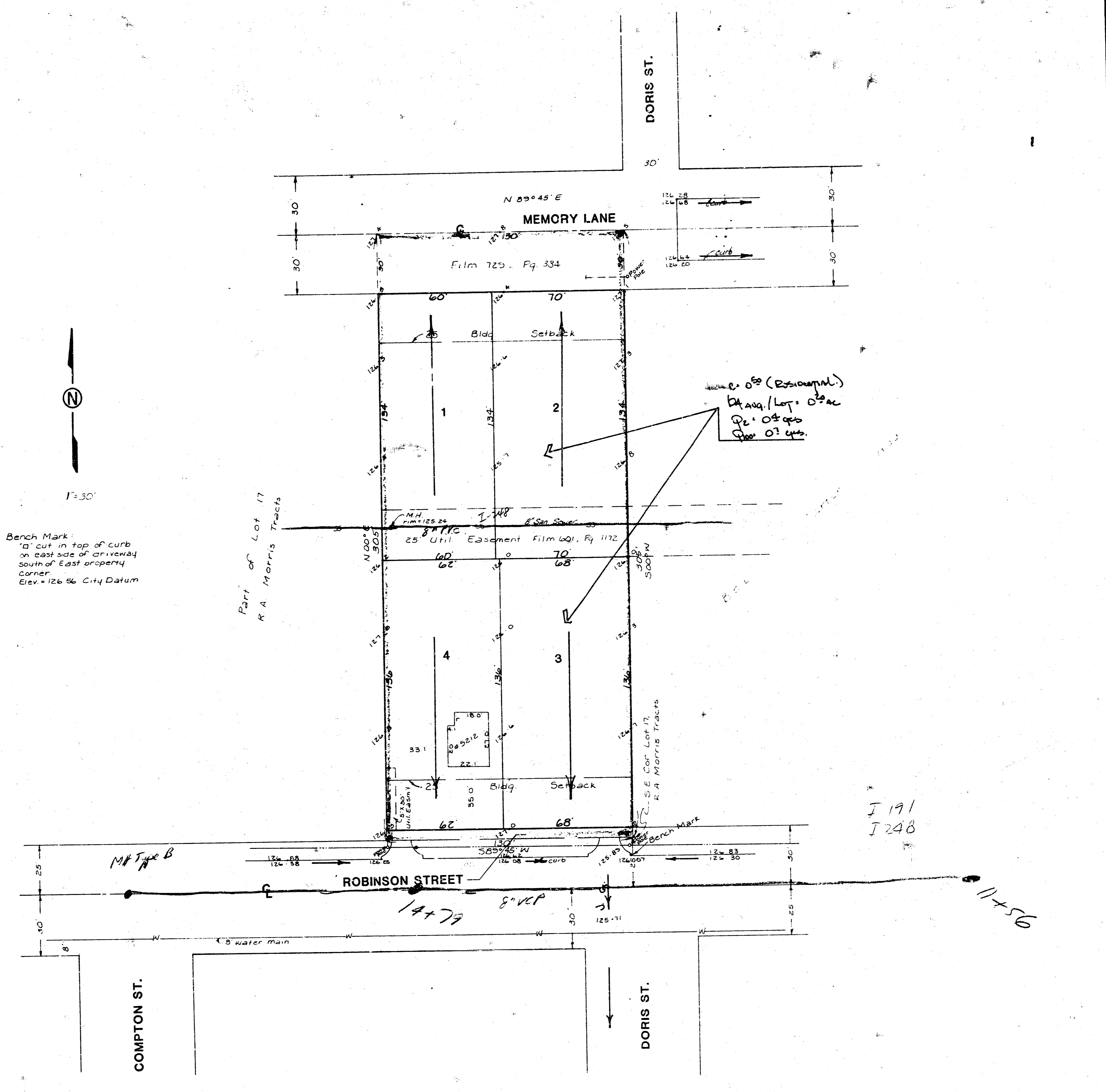


Bratcher 2nd add'n



Bench Mark:
 □ cut in top of curb
 on east side of driveway
 south of East property
 corner
 Elev. = 126.56 City Datum

Area = 0.50 (Estimated)
 Avg. Lot = 0.125 ac
 Pl. = 0.125 ac
 Sp. = 0.125 ac

I 191
 I 248

SKETCH PLAT
BRATCHER 2ND ADDITION

LOT 17, EXCEPT THE WEST 510 FEET THEREOF, R. A. MORRIS TRACTS,
 SEDGWICK COUNTY, KANSAS

DRAINAGE PLAN

OWNER: MICHAEL D. BRATCHER

BAUGHMAN COMPANY, P.A.
 SURVEYING & ENGINEERING
 316/262-7271 • 315 ELLIS • WICHITA, KANSAS 67211