

SRB

SCALE 1" = 100'  
IRON = ●

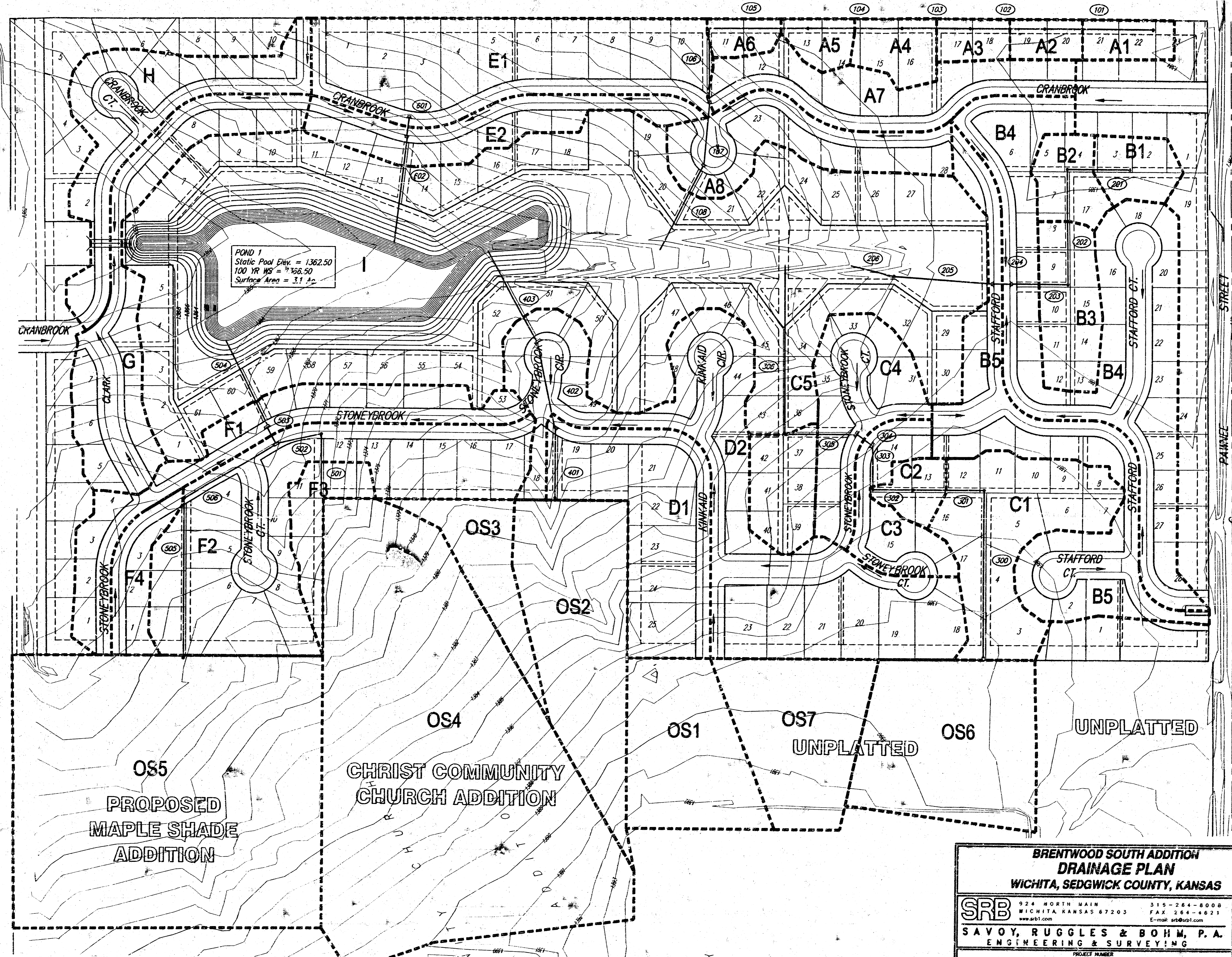
**BRENTWOOD SOUTH ADDITION  
DRAINAGE SUMMARY**  
June 7, 2001

AREA	No.	Acres	Tc (Min.)	Soil Type	C100	I2	I100	Q2	Q100
A1	0.39	15	0.30	0.85	3.73	7.37	0.44	1.87	
A2	0.31	15	0.30	0.85	3.73	7.37	0.35	1.48	
A3	0.34	15	0.30	0.85	3.73	7.37	0.37	1.58	
A4	0.45	15	0.30	0.85	3.73	7.37	0.54	2.30	
A5	0.35	15	0.30	0.85	3.73	7.37	0.39	1.68	
A6	0.27	15	0.30	0.85	3.73	7.37	0.30	1.29	
A7	2.03	15	0.50	0.78	3.73	7.37	3.78	11.37	
A8	1.65	15	0.50	0.78	3.73	7.37	3.08	9.24	
B1	0.51	15	0.50	0.85	3.73	7.37	0.57	2.44	
B2	0.58	15	0.30	0.85	3.73	7.37	0.65	2.78	
B3	1.04	15	0.30	0.85	3.73	7.37	1.16	4.98	
B4	4.36	19	0.50	0.78	3.42	6.88	7.46	22.13	
B5	3.05	19	0.50	0.78	3.42	6.88	5.22	15.48	
C1	2.28	18.8	0.30	0.85	3.39	6.58	2.32	9.77	
C2	0.57	15	0.30	0.85	3.73	7.37	0.41	1.77	
C3	0.87	15	0.50	0.78	3.73	7.37	1.81	5.43	
C4	1.56	15	0.50	0.78	3.73	7.37	2.91	8.74	
C5	0.77	15	0.30	0.85	3.73	7.37	0.86	3.69	
D1	2.57	22	0.50	0.78	3.17	6.28	4.07	12.27	
D2	5.28	22	0.50	0.78	3.17	6.28	8.34	25.10	
E1	3.68	15	0.50	0.78	3.73	7.37	6.86	20.81	
E2	1.44	15	0.50	0.78	3.73	7.37	2.69	8.07	
F1	2.09	15	0.50	0.78	3.73	7.37	3.90	11.71	
F2	4.41	15	0.50	0.78	3.73	7.37	8.22	24.70	
F3	0.65	15	0.30	0.85	3.73	7.37	0.73	3.11	
F4	0.63	15	0.50	0.78	3.73	7.37	1.17	3.53	
G	2.39	15	0.50	0.78	3.73	7.37	4.46	13.39	
H	2.18	15	0.50	0.78	3.73	7.37	4.07	12.21	
I	19.21	15	0.40	0.70	3.73	7.37	28.86	98.10	
OS1	2.00	15	0.50	0.78	3.73	7.37	3.73	11.20	
OS2	3.85	20.5	0.30	0.65	2.73	7.37	4.31	18.44	
OS3	0.98	15	0.30	0.85	3.73	7.37	1.10	4.69	
OS4	8.93	19	0.30	0.85	3.42	6.88	10.19	43.12	
OS5	10.30	15	0.57	0.79	3.73	7.37	21.69	58.39	
OS6	2.83	15	0.50	0.78	3.73	7.37	5.29	16.85	
OS7	2.00	15	0.50	0.78	3.73	7.37	3.73	11.20	

Note: Runoff generated by StormCAD may be lower due to increased system Tc.  
\* These areas drain to sumps that allow 100 year overflow or served by bypass inlets.  
See StormCAD output for inlet flows.

**PIPE SUMMARY**

Pipe	Size	Grade	Q (cfs)
101	15"	0.50%	1.9
102	15"	0.50%	3.3
103	18"	0.50%	4.7
104	18"	0.50%	6.7
105	18"	0.50%	8.1
106	18"	0.50%	9.1
107	24"	0.50%	19.1
108	30"	0.30%	27.0
201	15"	0.50%	2.5
202	18"	0.50%	5.1
203	24"	0.50%	9.7
204	24"	0.50%	21.4
205	30"	0.52%	33.3
206	30"	0.51%	33.2
300	24"	0.51%	18.0
301	24"	0.51%	24.1
302	36"	0.30%	25.5
303	36"	0.30%	25.3
304	36"	0.30%	29.9
305	36"	0.30%	37.5
306	36"	0.26%	40.4
401	24"	1.00%	18.3
402	24"	1.25%	31.5
403	30"	3.78%	68.0
501	36"	0.80%	46.8
502	36"	2.13%	46.4
503	42"	1.00%	130.0
504	42"	1.00%	140.5
505	36"	1.50%	58.9
506	42"	0.50%	62.5
601	18"	0.50%	20.8
602	24"	3.08%	28.9



**BRENTWOOD SOUTH ADDITION  
DRAINAGE PLAN**  
WICHITA, SEDGWICK COUNTY, KANSAS

**SRB** 924 NORTH MAIN WICHITA, KANSAS 67203 315-264-8008 FAX 315-264-8621  
www.srb.com E-mail: srb@srbi.com

**SAVOY, RUGGLES & BOHM, P.A.**  
ENGINEERING & SURVEYING

PROJECT NUMBER: \_\_\_\_\_

DESIGN	DRAWN	UTILITY	REVIEW	DATE	REVISED
K.M.L.	K.M.L.			June 7, 2001	

DRG NO. \_\_\_\_\_ SHEET 1 OF 1