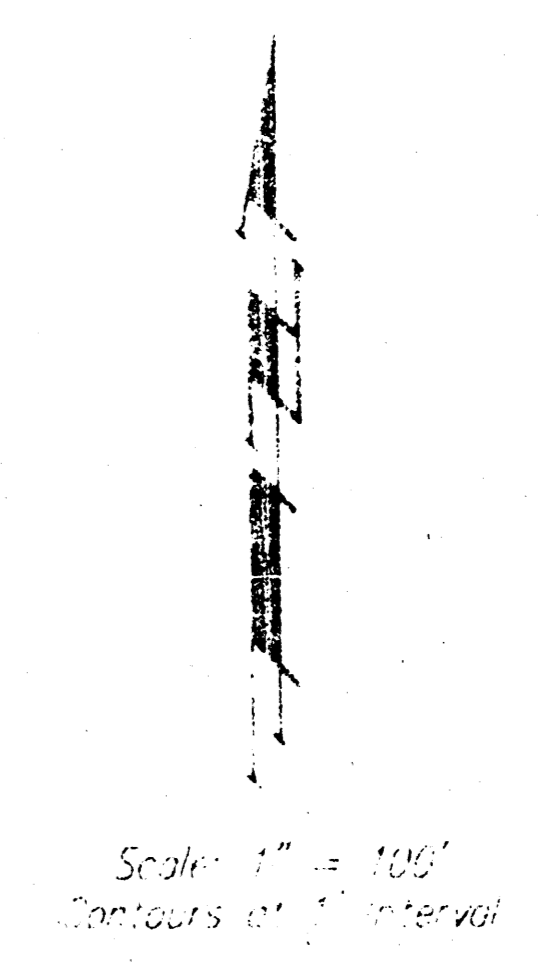
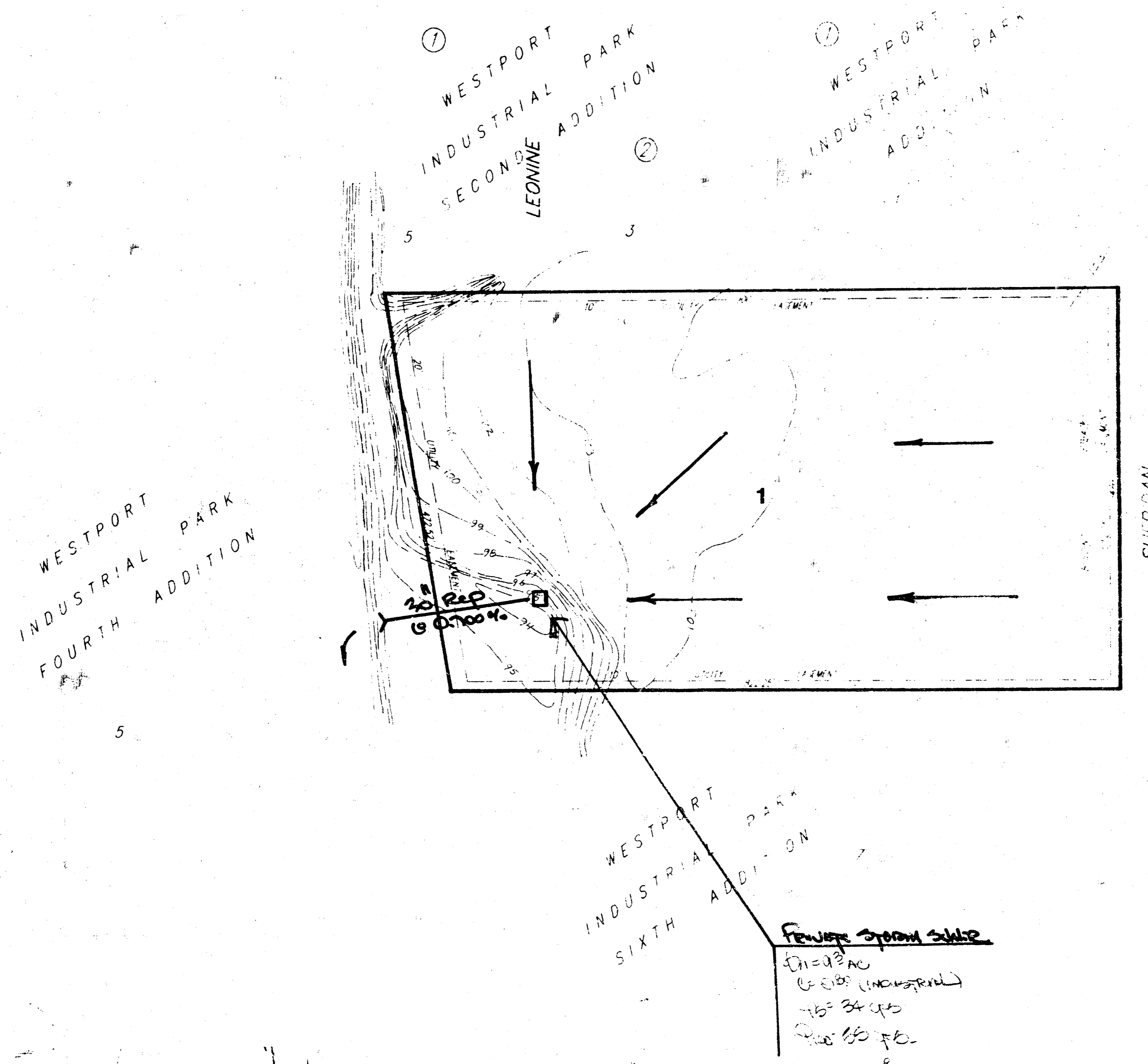
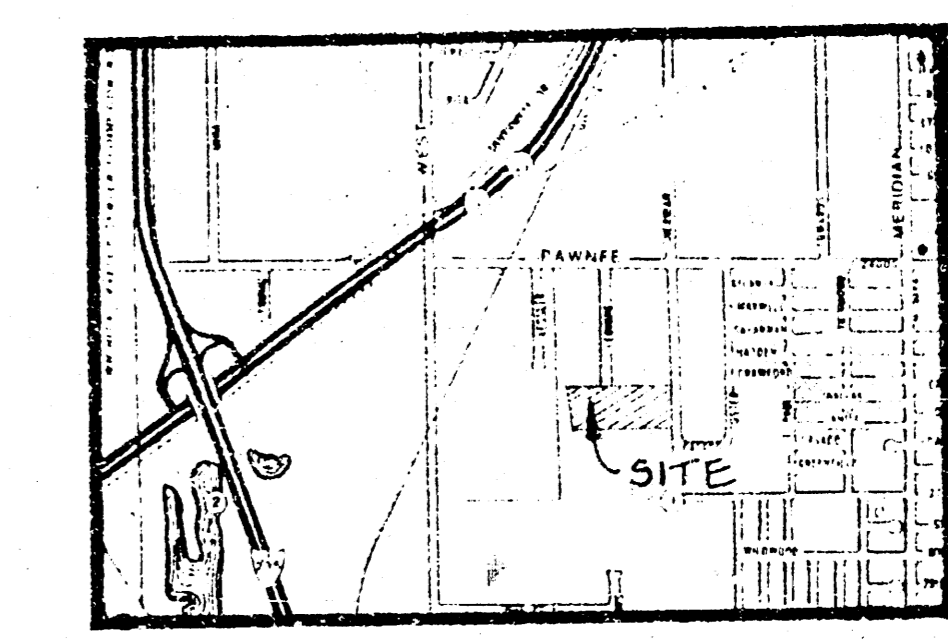


**PRELIMINARY PLAT
BRITAIN INDUSTRIAL PARK
WICHITA, SEDGWICK COUNTY, KANSAS**



Owner: Dewey Britton
2820 S. Sheridan
P.O. Box 12217
Wichita, Kansas 67217
1913, 142-H-23

Legal Description:
A replat of lots 1, 2, 3, 4, 5, and 6,
Westport Industrial Park Sixth Addition,
Wichita, Sedgewick County, Kansas.



Vicinity Map

DRAINAGE PLAN