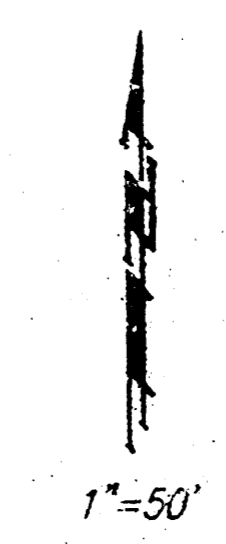
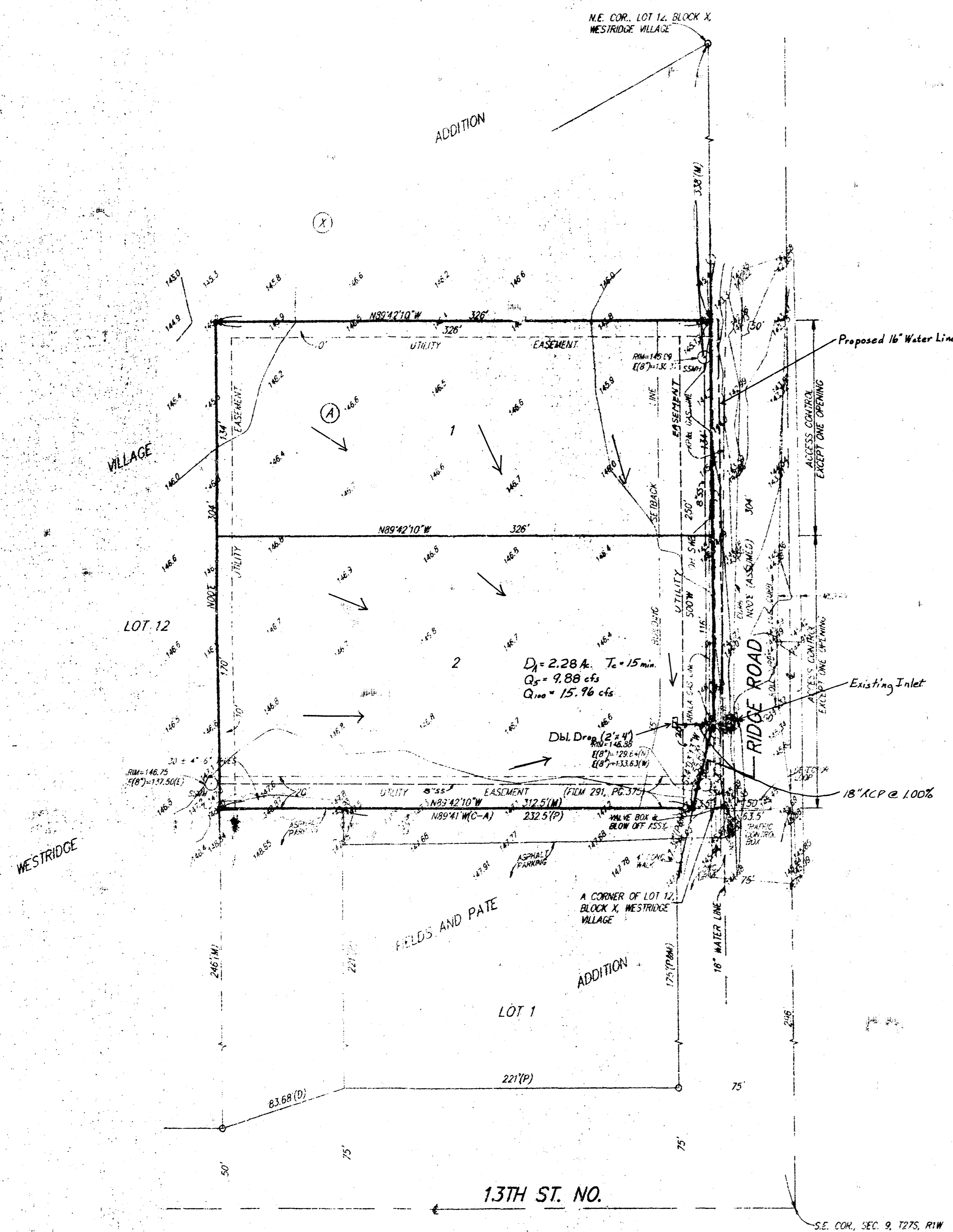


SKETCH PLAT BROCK ADDITION

WICHITA, SEDGWICK COUNTY, KANSAS



- = 1/2" REBAR W/ "BAUGHMAN" CAP (SET)
- = 1/2" IRON (FOUND)
- (P) = PLATTED
- (C-A) = ANGLE CALCULATED PER PLATTED INFO.
- (M) = MEASURED
- (D) = DESCRIBED
- = TELEPHONE LINE
- = GAS LINE
- = TELEPHONE POLE

OWNER:
PATICE Properties, LLC
P.O. Box 1615
Pebble Beach, CA 93953
Ph: 408-624-8184

LEGAL DESCRIPTION:
A REPLAT OF THAT PART OF LOT 12, BLOCK X, WESTRIDGE VILLAGE, SEDGWICK COUNTY, KANSAS, BEGINNING AT A CORNER OF SAID LOT 12 SAID CORNER BEING 50 FEET WEST AND 296 FEET NORTH OF THE S.E. COR. OF SEC. 9, TWP. 27-S, R-1-W OF THE 6TH P.M., SEDGWICK COUNTY, KANSAS, THENCE WEST PARALLEL WITH THE SOUTH LINE OF SAID S.E. 1/4 AND ALONG A LINE OF SAID LOT 12 AND EXTENDED, 326 FEET; THENCE NORTH PARALLEL WITH THE EAST LINE OF SAID S.E. 1/4, 304 FEET; THENCE EAST PARALLEL WITH THE SOUTH LINE OF SAID S.E. 1/4, 326 FEET TO THE EAST LINE OF SAID LOT 12; THENCE SOUTH ALONG THE EAST LINE OF SAID LOT 12 AND PARALLEL WITH THE EAST LINE OF SAID S.E. 1/4, 304 FEET TO THE POINT OF BEGINNING.

BENCHMARK:
CITY DISC - RIDGE ROAD & 17TH (SUNCREST),
42' N. & 38.5' E. OF 1/4 SEC. CORNER
ELEV. = 142.81 CITY DATUM

8-4-93
Drainage & Utility Plan