

LAND USE = BUSINESS (MERCANTILE KIND)

$C_2 = 0.68$
 $C_{100} = 0.80$
 USE $T_c = 15$ MIN.
 $L_2 = 3.83$
 $L_{100} = 7.37$

BROCK THIRD ADDITION:

Area = 1.21 Acres
Zoning = LC

BROCK FOURTH ADDITION:

Area = 2.43 Acres
Zoning = LC

OWNER:

Police Properties, LLC
243 Portlock Road
Honolulu, HI 96825

SURVEYOR/ENGINEER:

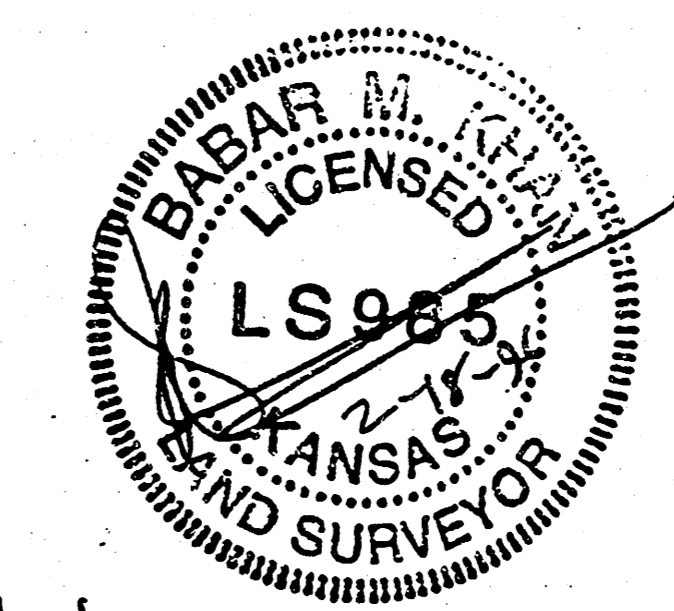
Babar M. Khan
Municipal Engineers, P.A.
254-Laura, Suite 201
Wichita, Kansas 67211

NOTE: STORM RETAINAGE MAY BE PROVIDED IN PARKING LOTS UPON DETAILED DRAINAGE ANALYSIS.

DRAINAGE CALCULATIONS

VICINITY MAP

BROCK THIRD & FOURTH ADDITION TO WICHITA SEDGWICK COUNTY, KANSAS



4/2/97 B.M.K.

