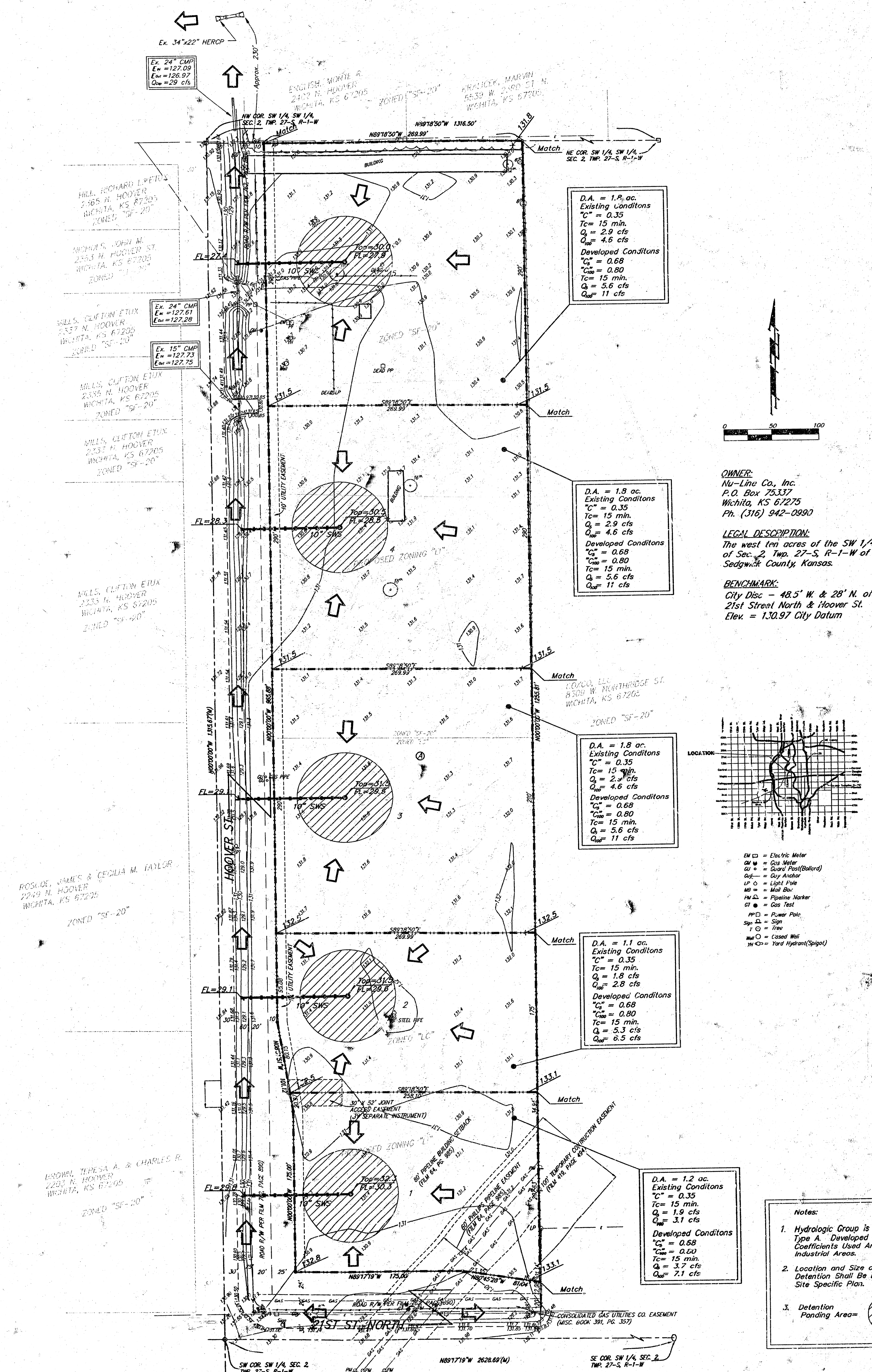


DRAINAGE PLAN

BURLESON ADDITION

WICHITA, SEDGWICK COUNTY, KANSAS



D.A. = 1.8 ac.
Existing Conditions
C_s = 0.35
T_c = 15 min.
Q₁ = 2.9 cfs
Q₁₀ = 4.6 cfs

Developed Conditions
C_s = 0.68
T_c = 15 min.
Q₁ = 5.6 cfs
Q₁₀ = 11 cfs

D.A. = 1.8 ac.
Existing Conditions
C_s = 0.35
T_c = 15 min.
Q₁ = 2.9 cfs
Q₁₀ = 4.6 cfs

Developed Conditions
C_s = 0.68
T_c = 15 min.
Q₁ = 5.6 cfs
Q₁₀ = 11 cfs

D.A. = 1.8 ac.
Existing Conditions
C_s = 0.35
T_c = 15 min.
Q₁ = 2.9 cfs
Q₁₀ = 4.6 cfs

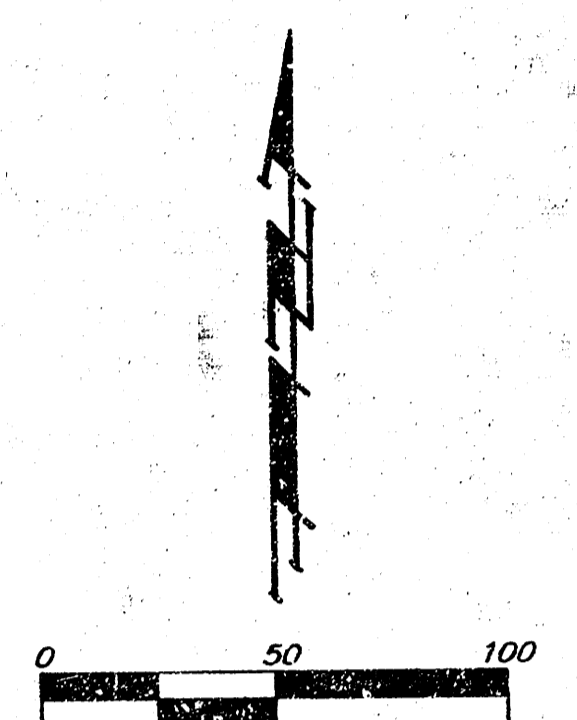
Developed Conditions
C_s = 0.68
T_c = 15 min.
Q₁ = 5.6 cfs
Q₁₀ = 11 cfs

D.A. = 1.1 ac.
Existing Conditions
C_s = 0.35
T_c = 15 min.
Q₁ = 1.8 cfs
Q₁₀ = 2.8 cfs

Developed Conditions
C_s = 0.68
T_c = 15 min.
Q₁ = 5.3 cfs
Q₁₀ = 6.5 cfs

D.A. = 1.2 ac.
Existing Conditions
C_s = 0.35
T_c = 15 min.
Q₁ = 1.9 cfs
Q₁₀ = 3.1 cfs

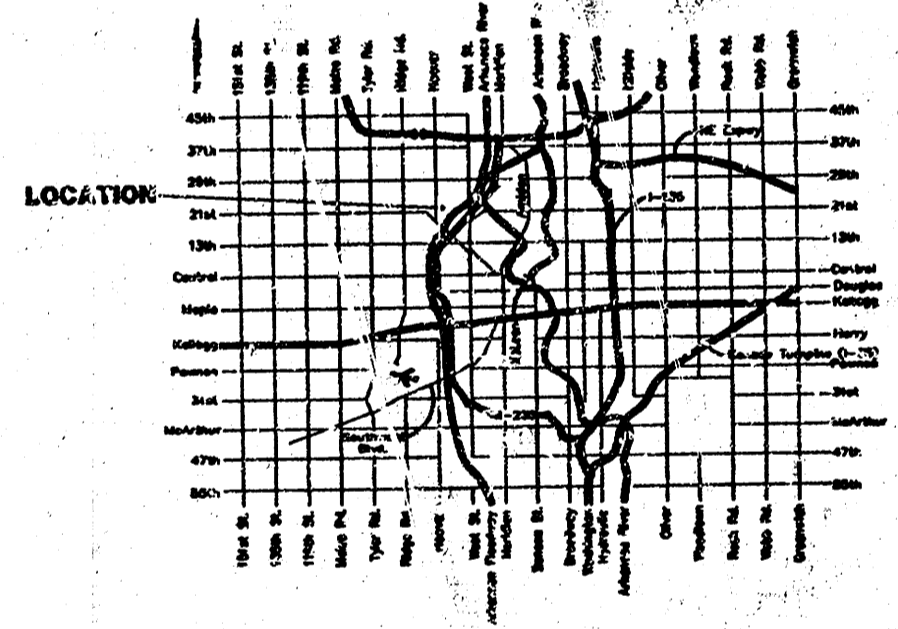
Developed Conditions
C_s = 0.68
T_c = 15 min.
Q₁ = 3.7 cfs
Q₁₀ = 7.1 cfs



OWNER:
Nu-Line Co., Inc.
P.O. Box 75337
Wichita, KS 67275
Ph. (316) 942-0990

LEGAL DESCRIPTION:
The west ten acres of the SW 1/4 of the SW 1/4 of Sec. 2, Twp. 27-S, R-1-W of the 6th P.M., Sedgwick County, Kansas.

BENCHMARK:
City Disc - 48.5' W. & 28' N. of C of 21st Street North & Hoover St.
Elev. = 130.97 City Datum



- EM = Electric Meter
- GM = Gas Meter
- BP = Guard Post (Bollard)
- AP = Guy Anchor
- LF = Light Pole
- MB = Mail Box
- PM = Pipeline Marker
- GT = Gas Test
- PP = Power Pole
- SP = Sign
- T = Tree
- WC = Cased Well
- WH = Ward Hydrant (Spigot)

- Notes:**
1. Hydrologic Group is Primarily Soil Type A. Developed Runoff Coefficients Used Are For Light Industrial Areas.
 2. Location and Size of Parking Lot Detention Shall Be Determined By Site Specific Plan.
 3. Detention Ponding Area =