

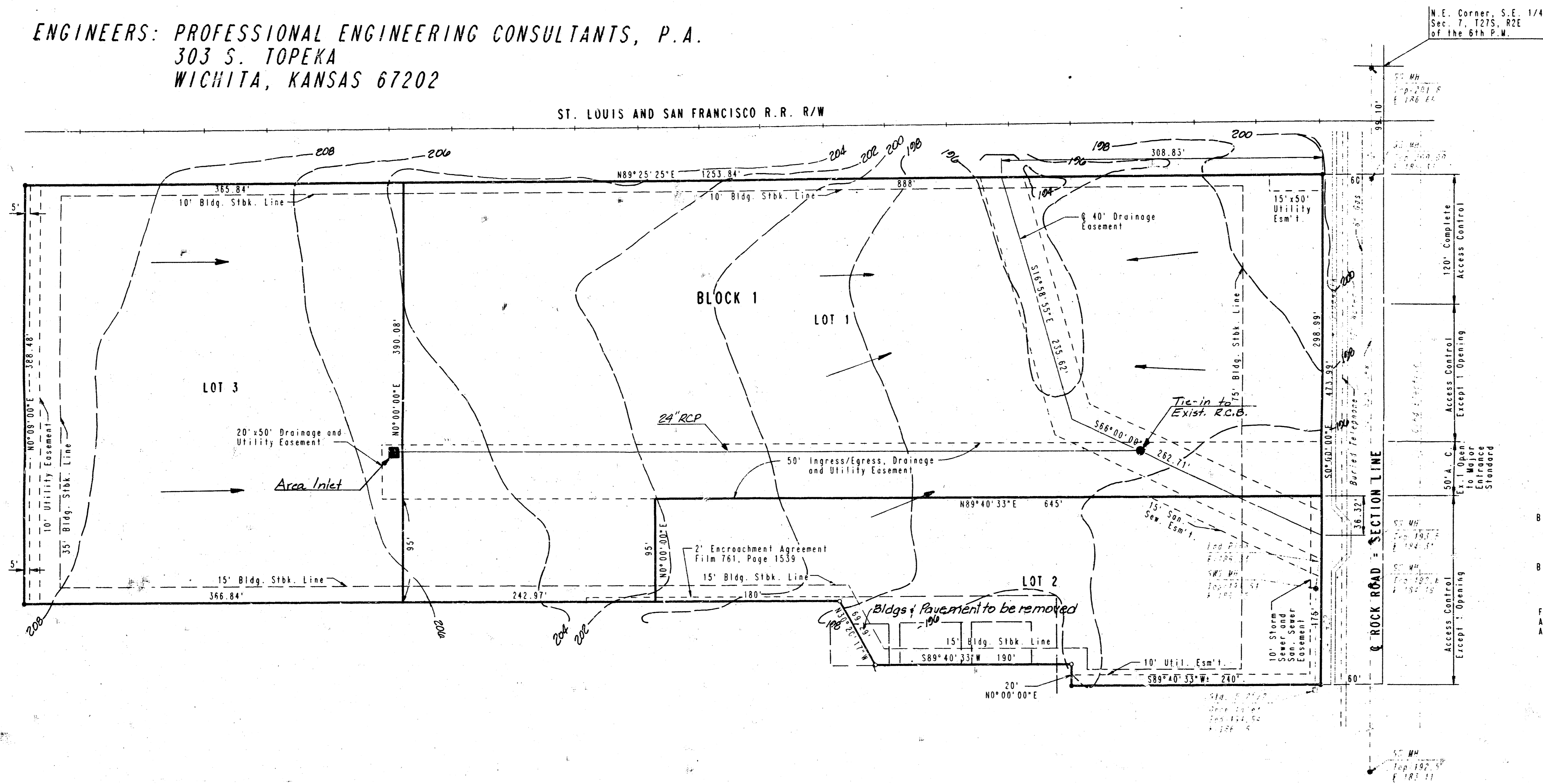
VICINITY MAP OF C.C.R. 3RD ADDITION

OWNERS: C.C.R. ASSOCIATES, A KANSAS PARTNERSHIP AND
SECURITY STORAGE PROPERTIES, A KANSAS GENERAL PARTNERSHIP
c/o STEPHEN L. CLARK
P.O. BOX 21080
WICHITA, KANSAS 67208

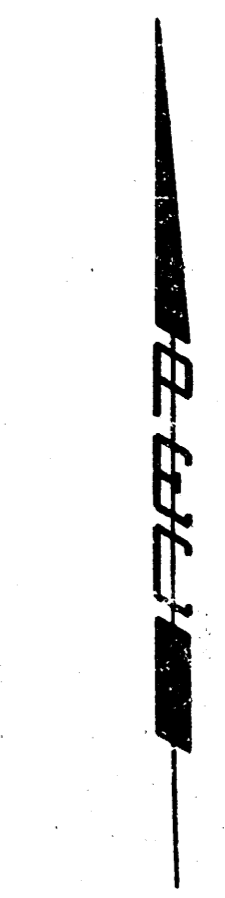
ENGINEERS: PROFESSIONAL ENGINEERING CONSULTANTS, P.A.
303 S. TOPEKA
WICHITA, KANSAS 67202

	A(ac.)	C _a	C _{wo}	L _a (in/hr)	L _{wo} (in/hr)	Q _a (cfs)	Q _{wo} (cfs)
	12.0	0.48	0.80	3.80	7.36	31.0	70.6
Lot 3 Only	4.7	0.68	0.80	3.80	7.36	12.1	27.7

Note: "C" based on "Business-Neighborhood Area"
"L" based on t_c = 15 min.



N.E. Corner, S.E. 1/4
Sec. 7, 12th S. R2E
of the 6th P.M.



SCALE: 1" = 60'
● IRON FOUND
○ 3/4" IRON SET
A.C. = ACCESS CONTROL

B.M. - CITY OF WICHITA BENCH MARK DISC. 42' NORTH AND
38' EAST OF THE CENTERLINE OF ROCK ROAD AND
13TH STREET NORTH. ELEV. = 186.849 CITY DATUM
B.M. - CITY OF WICHITA BENCH MARK DISC. 28' EAST OF
CENTERLINE OF ROCK ROAD AND 51' NORTH OF
CENTERLINE OF RAILROAD TRACKS. ELEV. = 199.701 CITY DATUM
FOR ADDITIONAL BUILDING SETBACK LINES SEE C.U.P. D.P. - 215.
AMENDMENT NUMBER ONE, ON FILE AT THE WICHITA-METROPOLITAN
AREA PLANNING DEPARTMENT.

Note: All site drainage to be carried
overland or in storm sewer to
proposed R2B extension located
in 40-foot Drainage Easement.

DRAINAGE PLAN
2/95

