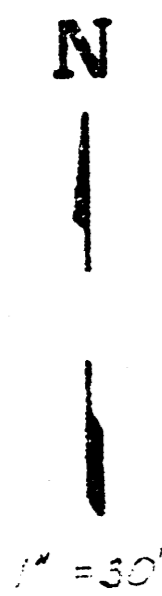


**DRAINAGE PLAN
SKETCH PLAT
CALIENDO 11TH ADDITION**

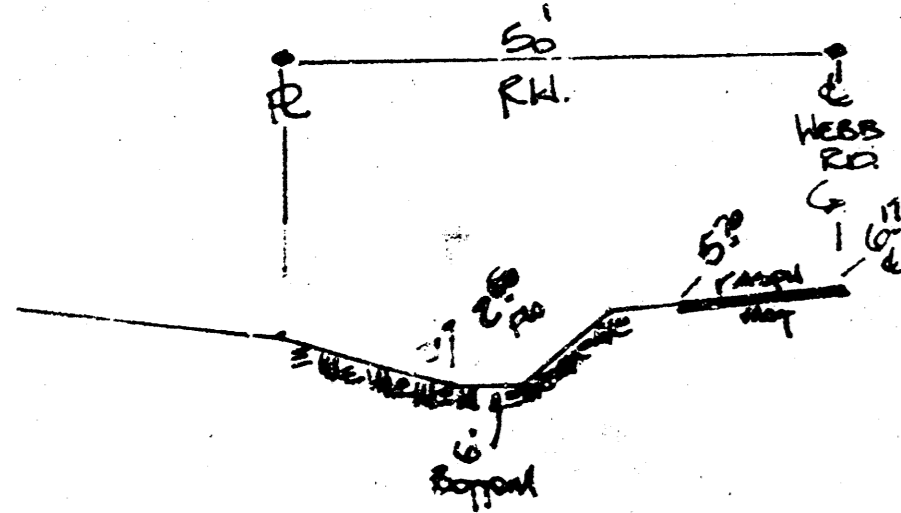
THE EAST 10 ACRES OF THE NORTH HALF OF THE NORTHEAST QUARTER OF SECTION 32, TOWNSHIP 27 SOUTH, RANGE 2 EAST OF THE 6TH P.M., SEDGWICK COUNTY, KANSAS, EXCEPT THE SOUTH 1 ACRE THEREOF, AND EXCEPT BEGINNING 640 FEET NORTH OF THE SOUTHEAST CORNER OF THE NORTH HALF OF SAID NORTHEAST QUARTER; THENCE WEST 330 FEET, MORE OR LESS, TO THE WEST LINE OF THE EAST 10 ACRES OF THE NORTH HALF OF SAID NORTHEAST QUARTER; THENCE NORTH TO THE NORTH LINE OF SAID NORTHEAST QUARTER; THENCE EAST TO THE EAST LINE OF SAID NORTHEAST QUARTER; THENCE SOUTH TO THE POINT OF BEGINNING.

ANGELINE M SCHMIT
RICHARD S CALIENDO



NOTE:

The west part of Lots 1, 2, & 3 will be filled to provide surface drainage to the west ditch of Webb Road.

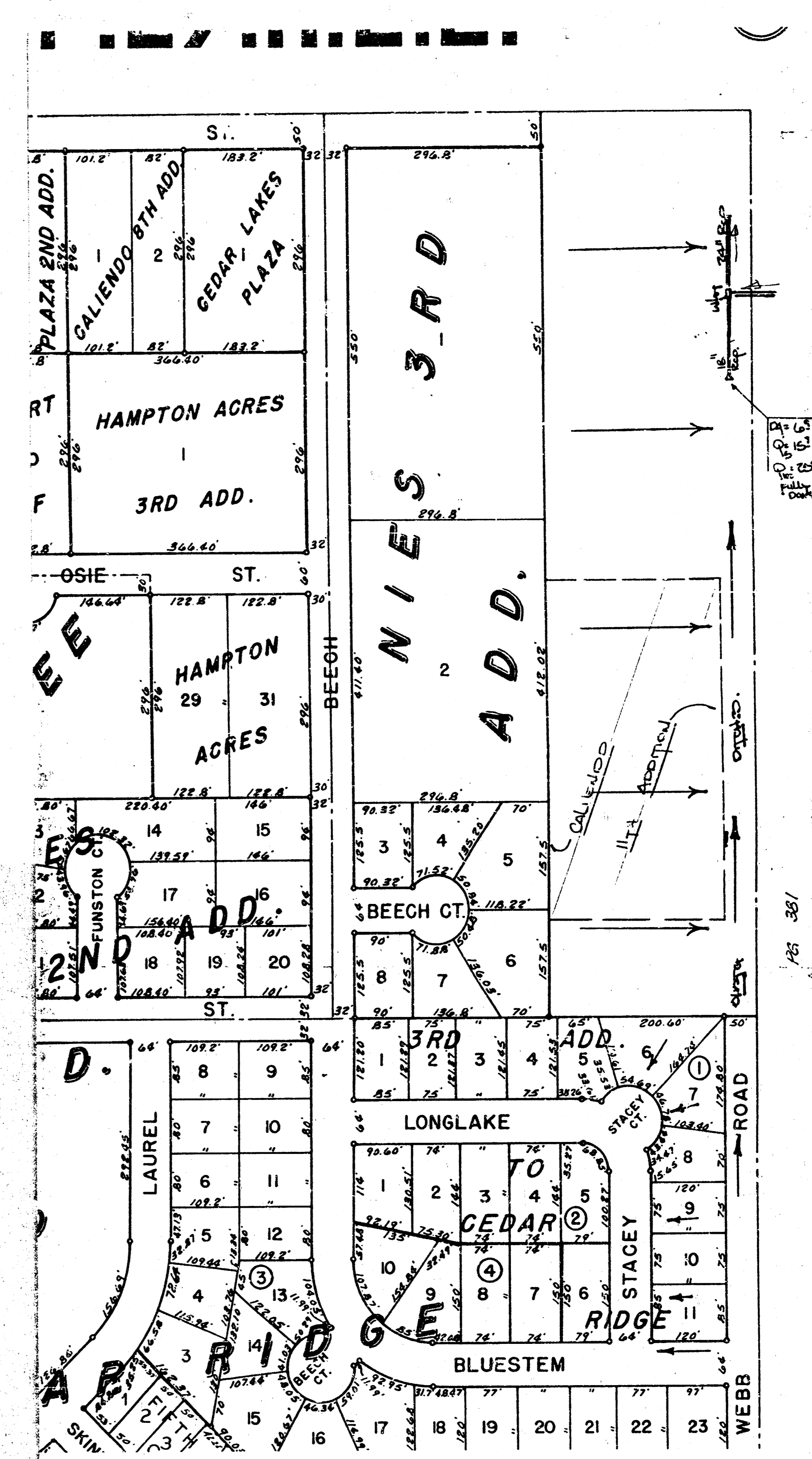
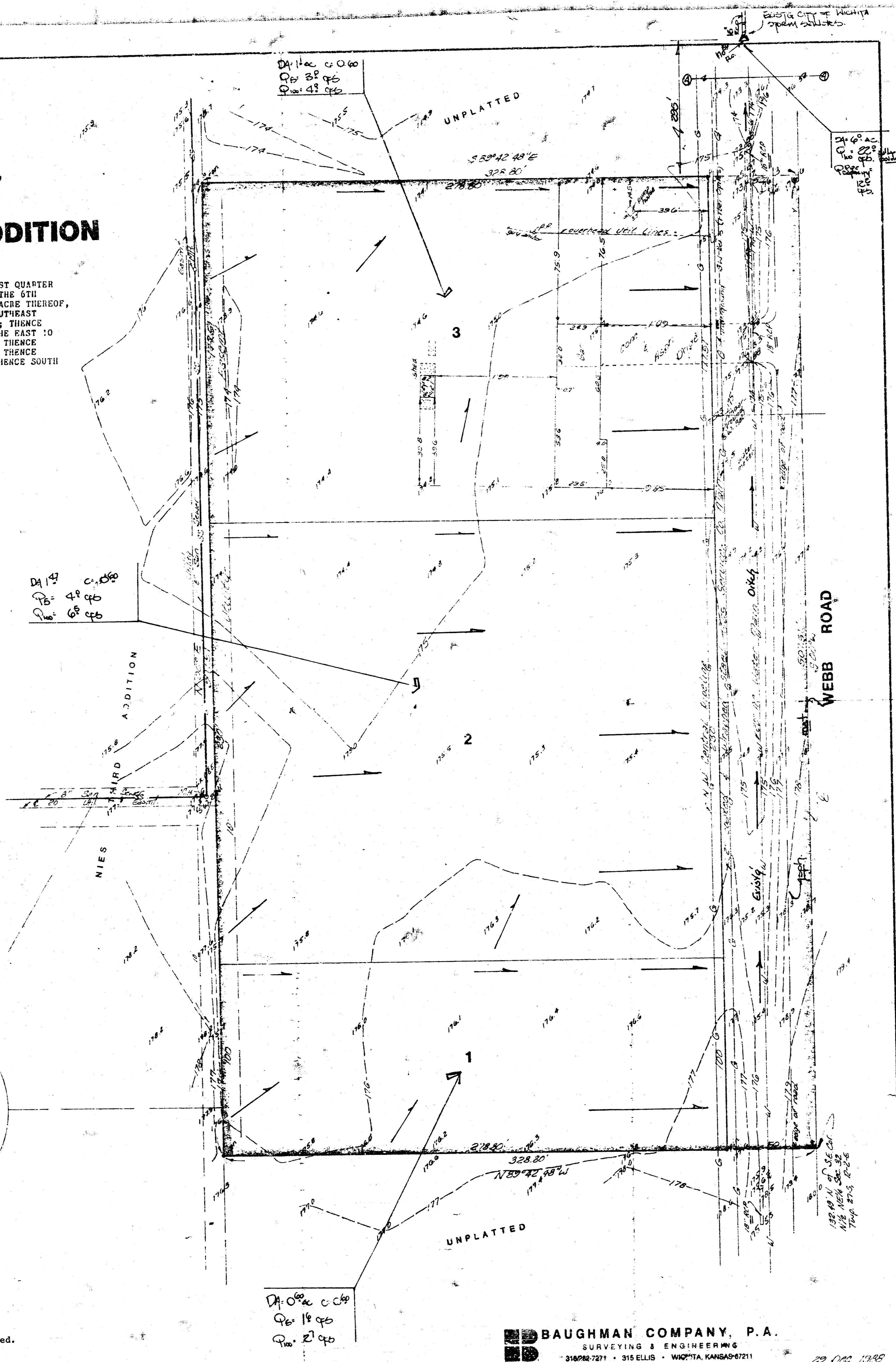


Vertical AA
Typical Section
S₁ = 0.400
Q = 0.03
P = 9c cfs
Slope - Ditch capacity is sufficient.

CHY
11th Floor
Mick H.

GENERAL NOTE

The three lot plat is proposed to be developed in the future for office use. The average runoff factor used in the calculations is 0.60. Future immediate development is planned to occur at this site. The future development runoff will drain east to the Webb Road ditches and drain north as indicated. The discharge points from the lots as they develop will be protected from erosion occurring as necessary.



BAUGHMAN COMPANY, P.A.
SURVEYING & ENGINEERING
310282-7271 • 315 ELLIS • WICHITA, KANSAS 67211

29 JUL 1985

FILMED FROM THE BEST AVAILABLE COPY