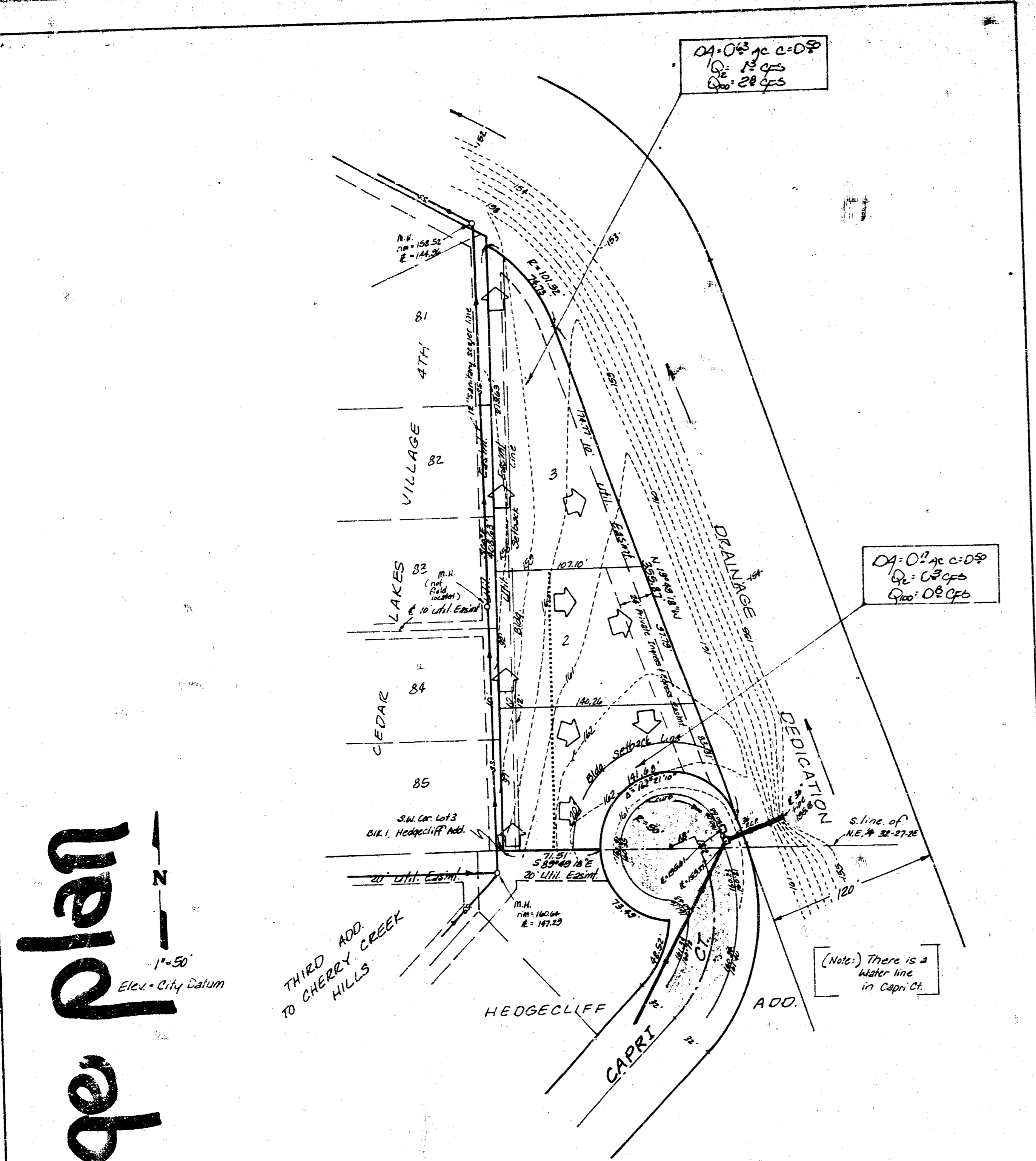


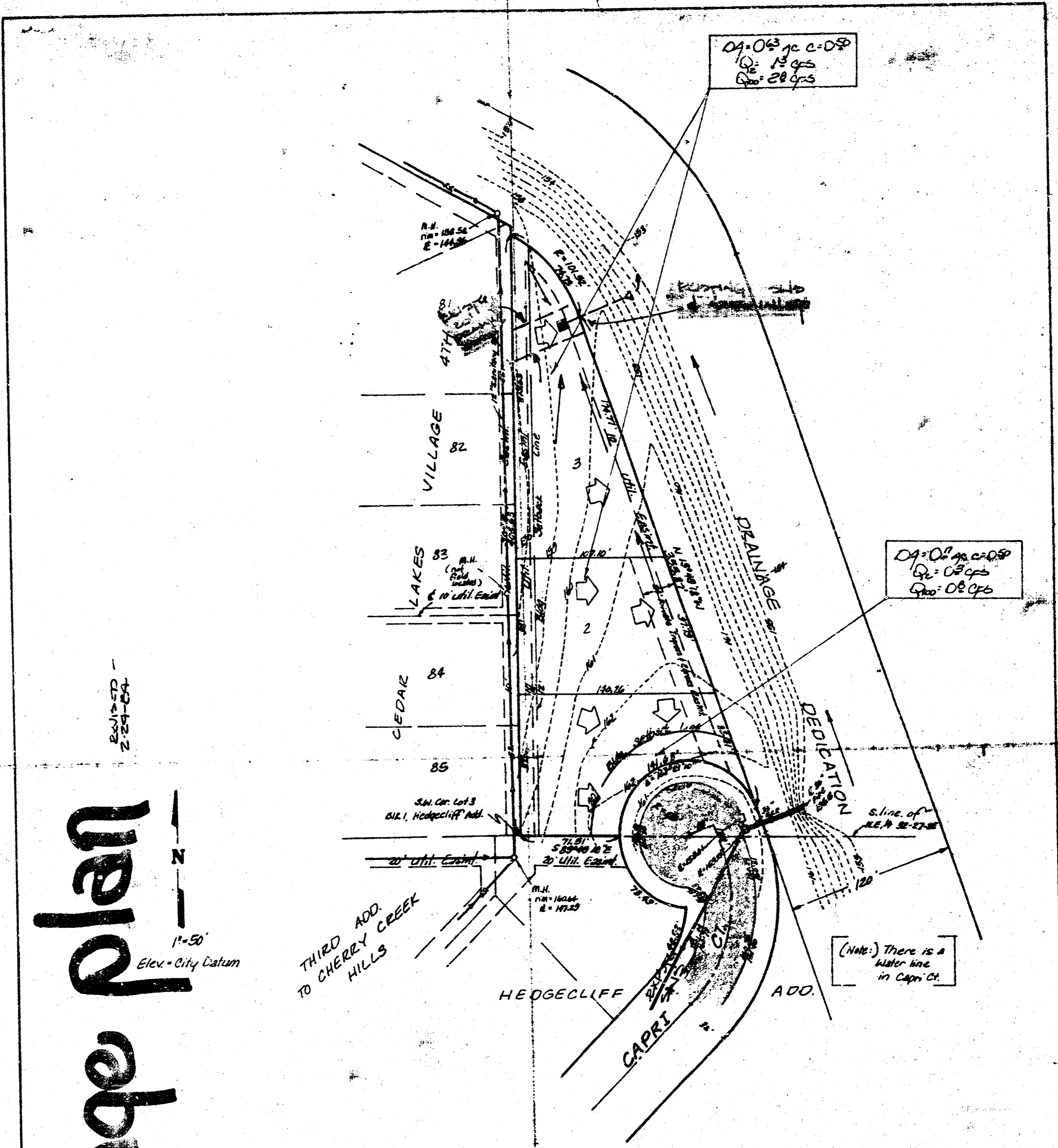
CEDAR CLIFF ADDITION  
(DRAINAGE)



drainage plan

SKETCH PLAT  
**CEDAR CLIFF ADDITION**  
BEING A REPLAT OF LOTS 3 AND 4,  
BLOCK 1, HEDGECLIFF ADDITION,  
WICHITA, KANSAS  
OWNER: MICHAEL D. HUFF

**BAUGHMAN COMPANY, P.A.**  
SURVEYING & ENGINEERING  
316/262-7271 • 330 LAURA • WICHITA, KANSAS 67211  
5-27-83



drainage plan

SKETCH PLAT  
**CEDAR CLIFF ADDITION**  
BEING A REPLAT OF LOTS 3 AND 4,  
BLOCK 1, HEDGECLIFF ADDITION,  
WICHITA, KANSAS  
OWNER: MICHAEL D. HUFF

**BAUGHMAN COMPANY, P.A.**  
SURVEYING & ENGINEERING  
316/262-7271 • 330 LAURA • WICHITA, KANSAS 67211  
5-27-83

**BAUGHMAN COMPANY, P.A.**  
SURVEYING & ENGINEERING  
316/262-7271 • 330 LAURA • WICHITA, KANSAS 67211

MEMO

PROJECT: Cedar Cliff Addition	DATE: May 27, 1983
JOB NO.:	COPIES TO:
TO: Chris Breitenstein	
FROM: B. Wooten	
REFERENCE: Drainage Plan	

Final Plat is scheduled for Subdivision for June 9, 1983.  
Lots will be duplex lots. C = 0.50. Lot 1 will drain mostly to Capri Ct. which is discharged by an existing storm sewer as indicated. Lots 2 and 3 will drain to the drainage ditch as indicated to either the east or north.