

CENTRAL-MAIZE ADDITION
(DRAINAGE)

M-84
Westlink Interceptor Sewer

10500 N

6500 E

7000 E

7500 E

10500 N

9000 N

9500 N

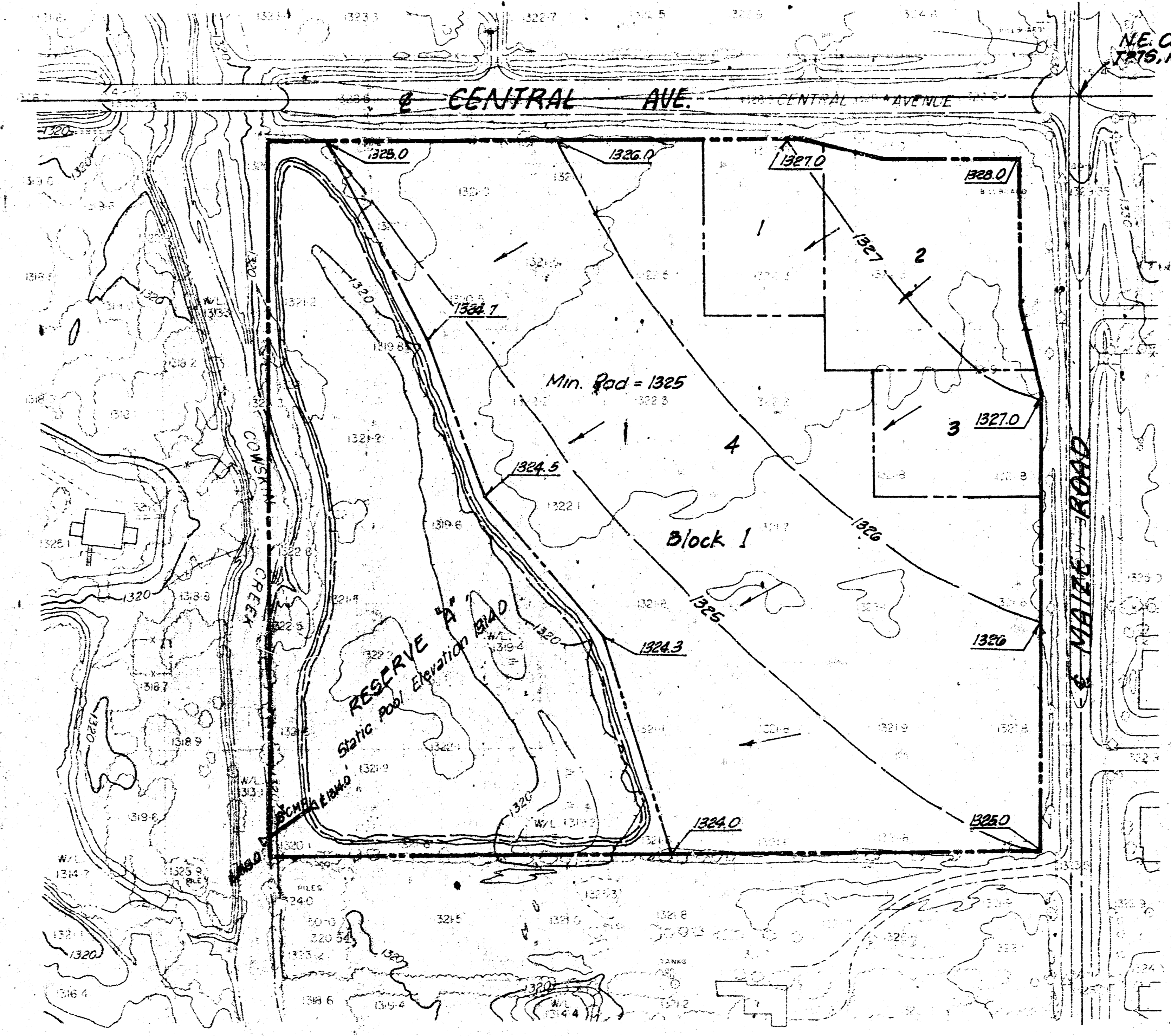
9000 N

6500 E

7000 E

7500 E

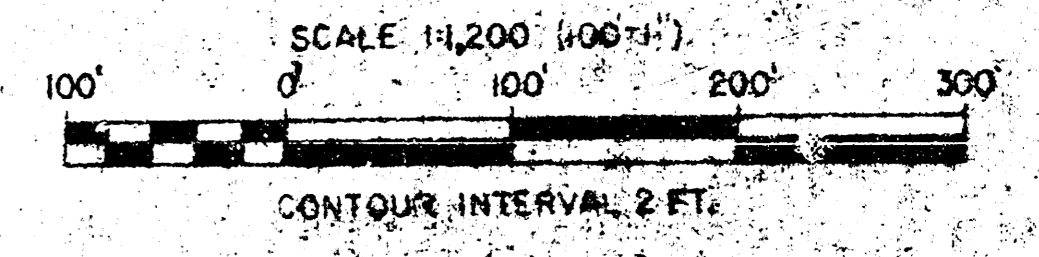
9000 N



N.E. Cor. NE 1/4 Sec. 19,
T.27S., R.1W. of 6th P.M.

B.M. City of Wichita, bench Mark disc 41.3 Ft.
South 55.5 Ft. East of centerline intersection
of Central & Maize Blvd. = 142.257 City Data.

TOPOGRAPHIC MAP OF LANDS LOCATED AT
NE 1/4 SECTION 19, T-27S., R-1W.
SEDGWICK COUNTY, KANSAS
SURVEYING & ENGINEERING
P. E. C. - ALLIED LABORATORIES



PHOTOGRAPHY BY: MILES AND PHOTO SURVEY, INC., KANSAS CITY, MO. FILE: M-84-83-40
AERIAL PHOTOGRAPHY: TYPE: VERTICAL AT 40% R.O. ALTITUDE: APPROX. 4000 FT. DATE: 1/2 OBTAINED: 02-28-79

Note: All lots shall be graded to drain to streets, ponds, gutters, or existing storm water sewers, via drives, flumes, private storm water sewers and for any other approved drainage facilities.

DRAINAGE PLAN
Central-Maize Add.
9-20-83