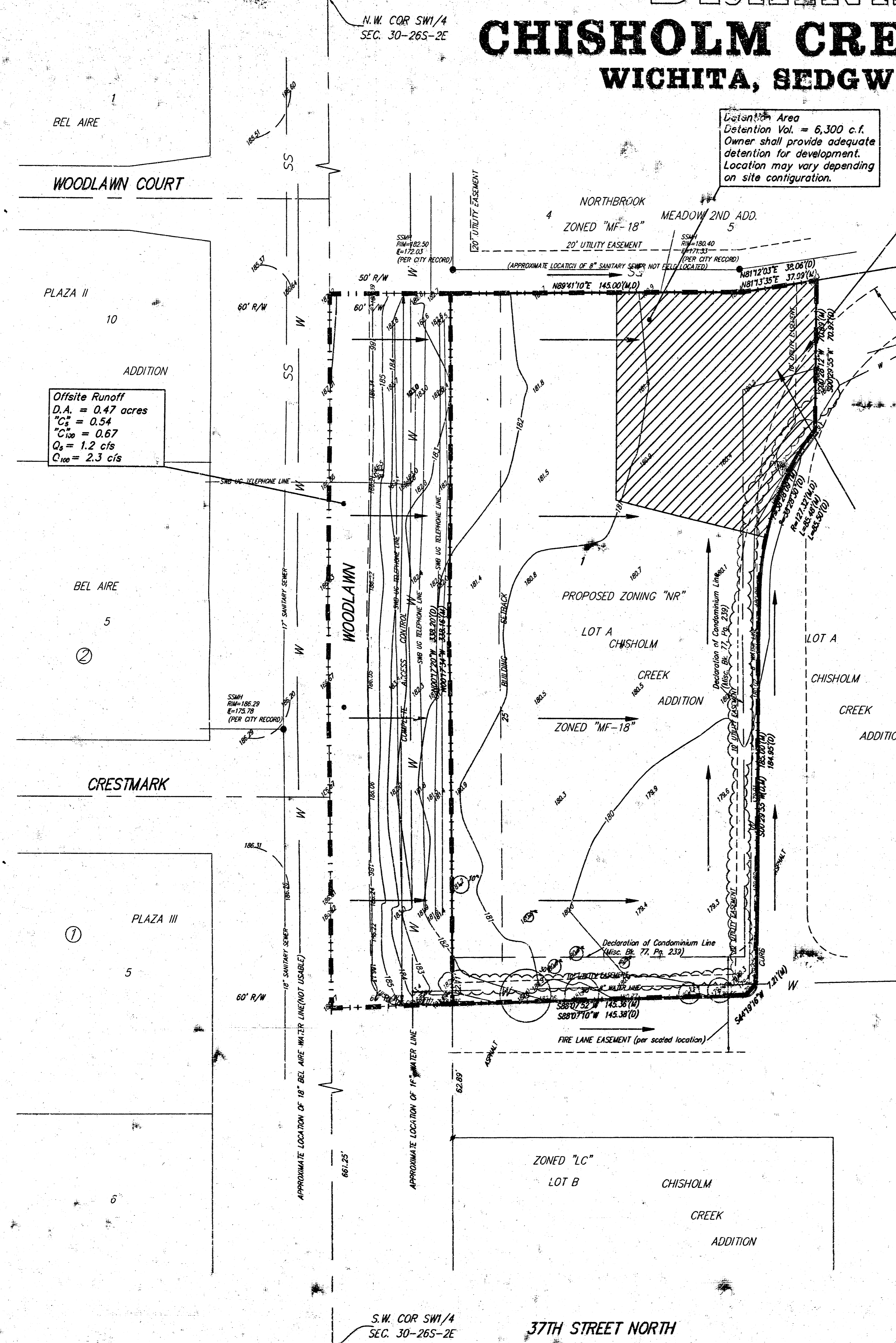


DRAINAGE PLAN

CHISHOLM CREEK 2ND ADDITION

WICHITA, SEDGWICK COUNTY, KANSAS



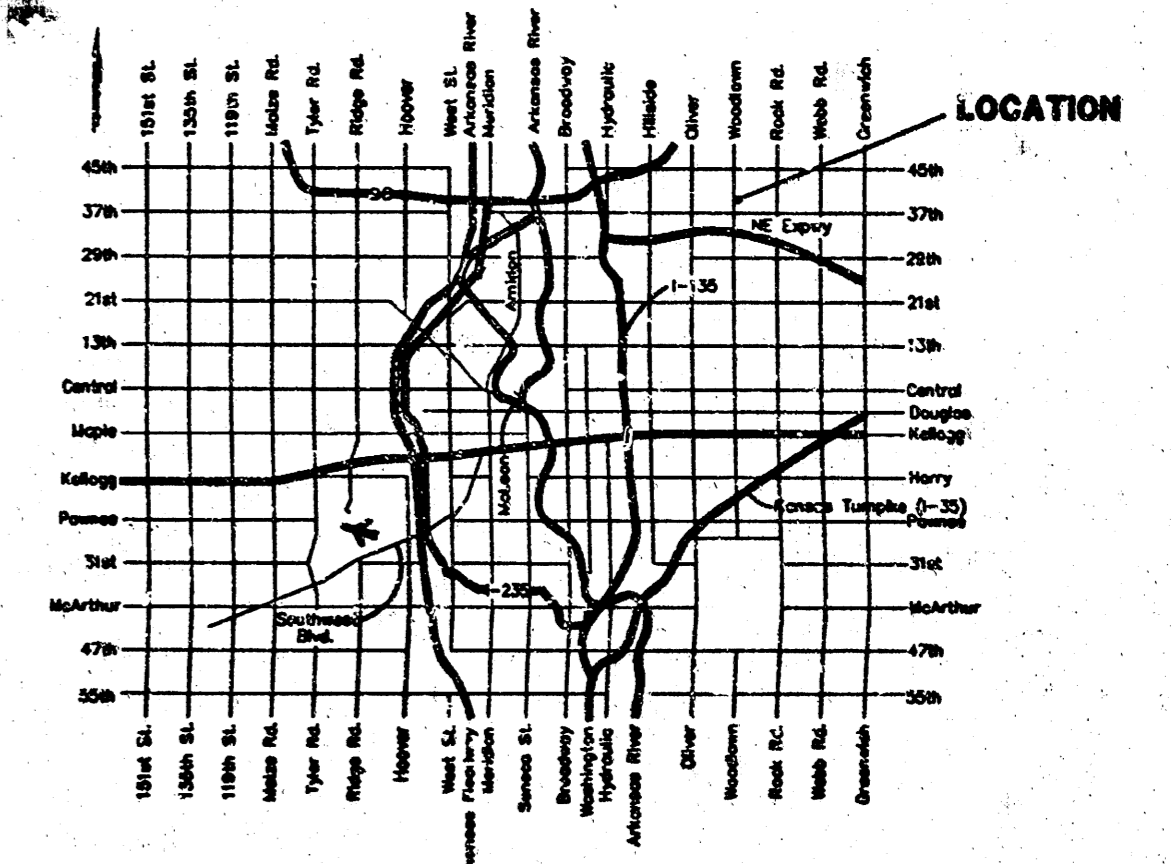
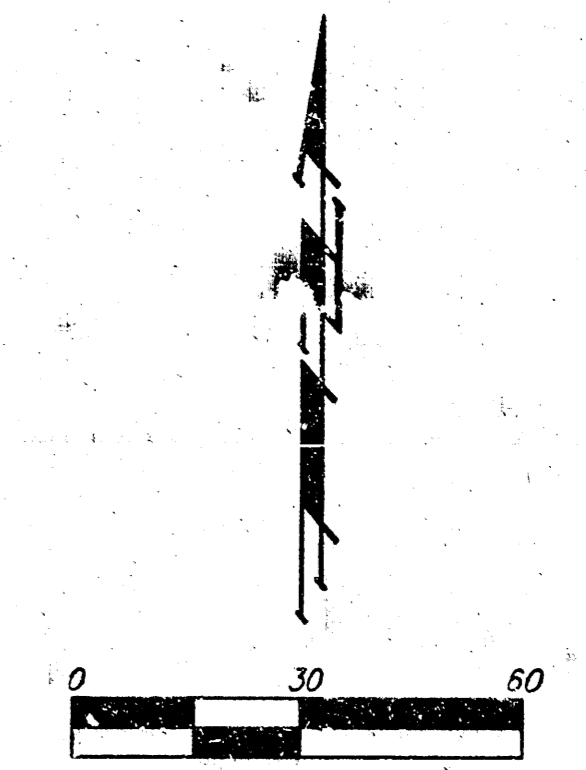
Retention Area
 Detention Vol. = 6,300 c.f.
 Owner shall provide adequate
 detention for development.
 Location may vary depending
 on site configuration.

D.A. = 1.7 ac.	
Tc = 15 min.	
Existing	Developed
C ₁₀₀ = .35	C ₁₀₀ = .69
C ₁₀ = .55	C ₁₀ = .80
Q ₁₀₀ = 2.7 cfs	Q ₁₀ = 5.3 cfs
Q ₁₀₀ = 6.9 cfs	Q ₁₀₀ = 10 cfs

Offsite Runoff
 D.A. = 0.47 acres
 C₁₀₀ = 0.54
 C₁₀ = 0.67
 Q₁₀₀ = 1.2 cfs
 Q₁₀ = 2.3 cfs

OWNER:
 DeWayne Hofer
 1514 Country Club Avenue
 Concordia, Kansas 66901
 PH: (785) 243-2274

LEGAL DESCRIPTION:
 That part of Lot A, Chisholm Creek Addition to Sedgwick County, Kansas, described as commencing at a corner of said Lot A, said corner being 50 feet east and 600 feet north of the SW Corner of the SW 1/4 of Sec. 30, Twp. 26-S, R-2-E of the 6th P.M., Sedgwick County, Kansas; thence N0017°20'W along the west line of said Lot A, 62.89 feet for a place of beginning; thence continuing N 0017°20'W along the west line of said Lot A, 338.20 feet to a point on the south line of Northbrook Meadow 2nd Addition an Addition to Wichita, Sedgwick County, Kansas; thence N89°41'10"E, along the south line of said Northbrook Meadow 2nd Addition, 145.00 feet to a deflection point in said line; thence N81°2'03"E, along said south line, 38.06; thence S00°29'55"W, 70.97 feet, thence southwesterly along curve to the left having a radius of 127.32 feet, an arc distance of 85.50 feet, and with a chord bearing and distance of S19°44'10"W, 83.90 feet; thence S00°29'55"W, 184.95 feet; thence S44°18'33"W, 7.22 feet; thence S88°07'10"W, 145.38 feet to a point of beginning.



BENCHMARK:
 CITY OF WICHITA DISC 75' EAST & 56' SOUTH OF THE
 CENTERLINE OF WOODLAWN & 37TH STREET NORTH
 ELEV.=163.04

- OP ○ = Curb TV Pedestal
- TH ○ = Fire Hydrant
- SMW ● = Sanitary Sewer Manhole
- BV ● = Water Valve
- # = #4 REBAR W/ "BAUGHMAN" CAP (FOUND)
- # = #4 REBAR W/ "BAUGHMAN" CAP (SET)
- = 1/2" IRON (FOUND)
- (M) = MEASURED
- (D) = DESCRIBED
- (P) = PLATED
- (C) = CALCULATED

- WATER LINE
- SOUTHWESTERN BELL
- GAS LINE
- C&T V CoTV
- CoTV
- ELECTRIC LINE
- SANITARY SEWER
- SS