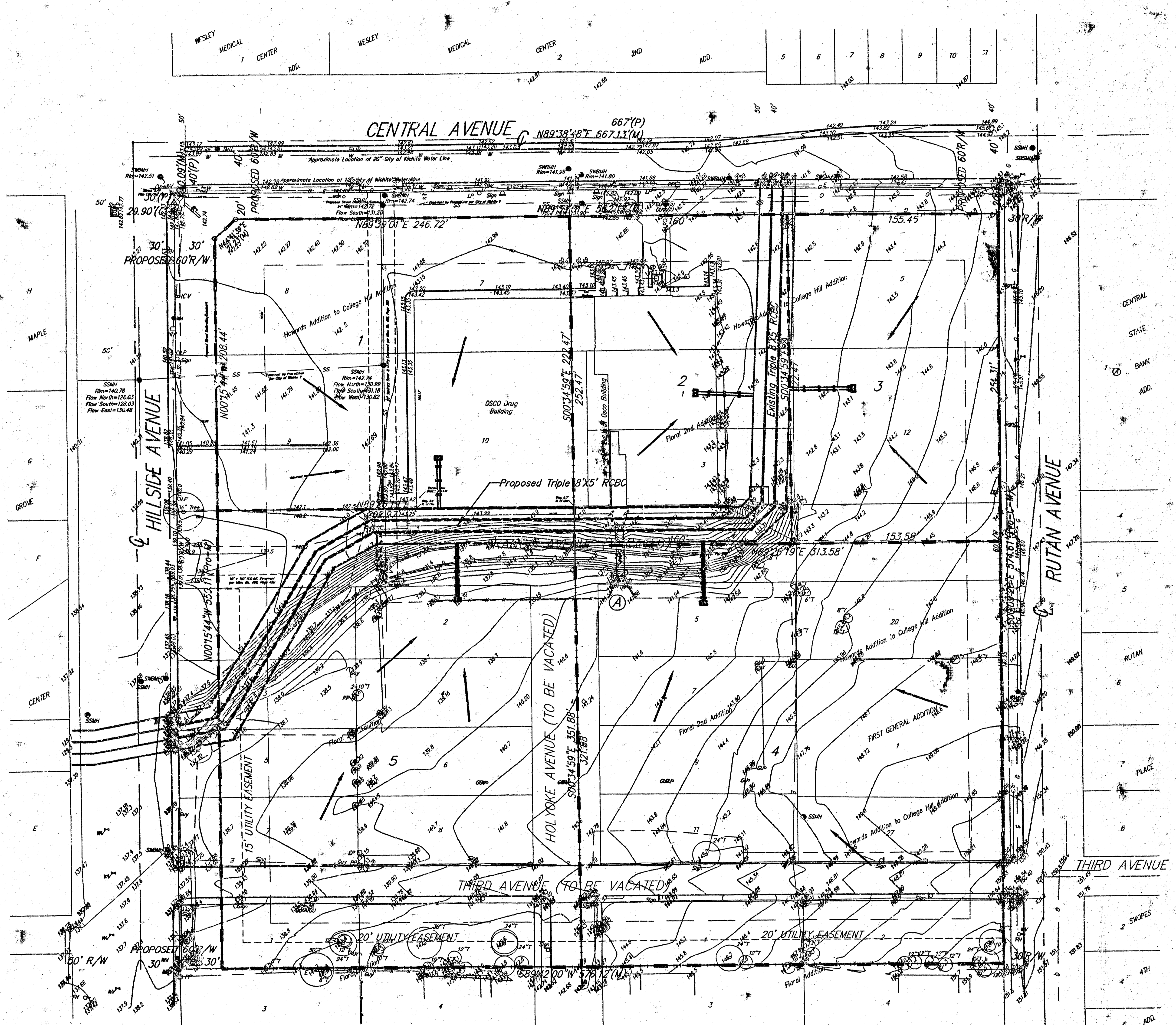


# DRAINAGE PLAN COLLEGE HILL SQUARE WICHITA, SEDGWICK COUNTY, KANSAS



- = #4 REBAR W/ "BAUGHMAN" CAP (FOUND)
- = #4 REBAR W/ "BAUGHMAN" CAP (SET)
- = #4 REBAR W/ "TILSI" CAP (FOUND)
- ⊗ = 1" IRON (FOUND)
- ⊙ = 1/2" IRON (FOUND)
- ⊕ = "P-K" NAIL & SHINER IN STUMP (FOUND)
- ⊛ = BOLT (FOUND)
- ⊚ = RAILROAD SPIKE (FOUND)
- ⊘ = #4 REBAR (FOUND)

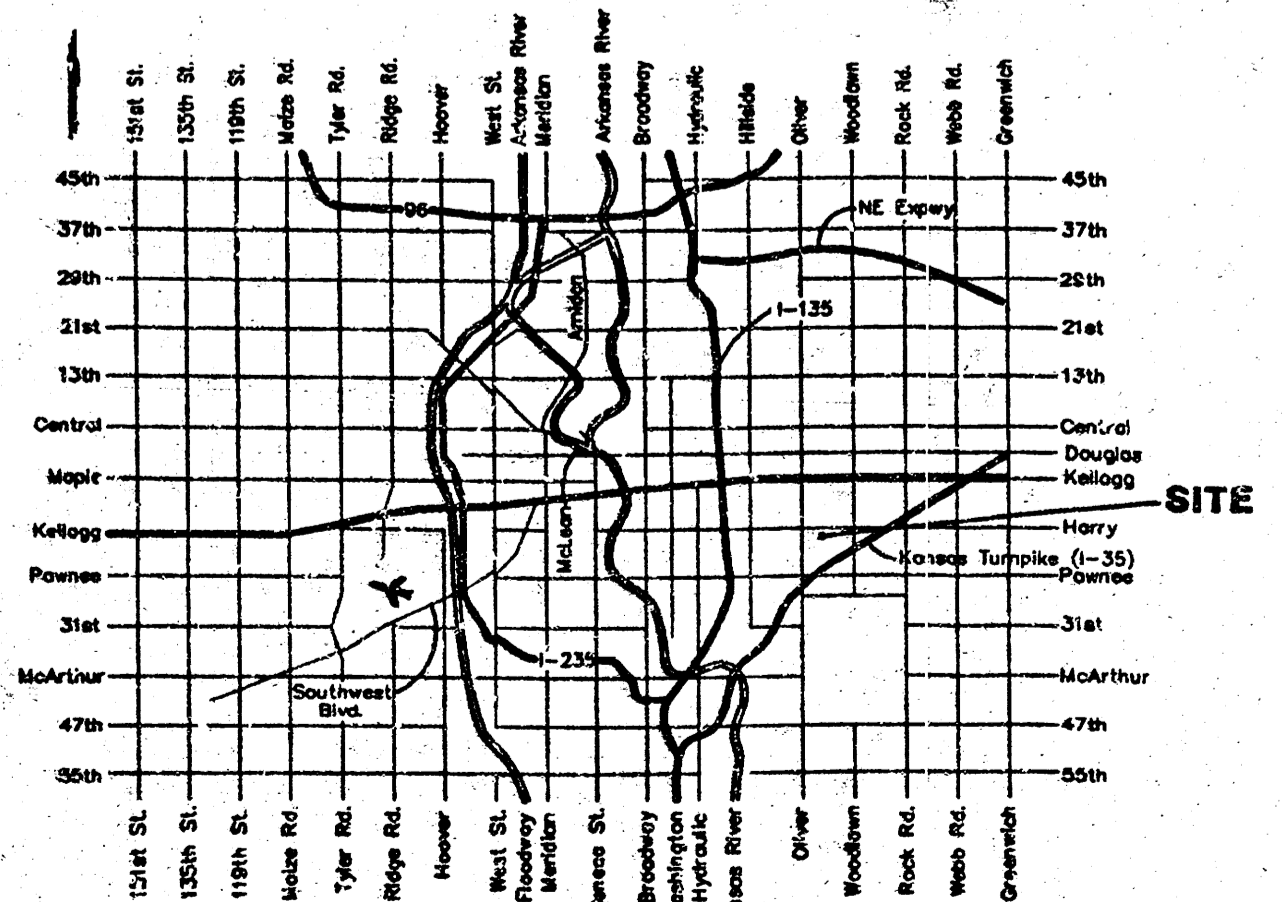
(M) = MEASURED  
 (D) = DESCRIBED  
 (P) = PLATTED  
 (C) = CALCULATED  
 (C-P) = CALCULATED PER PLATTED INFO.  
 (C-D) = CALCULATED PER DEED INFO.  
 (DEED) = DEED DESCRIPTION  
 (C-DESC) = CALCULATED PER TRACT DESCRIPTION

Drainage Area	Area (acres)	C <sub>i</sub>	C <sub>o</sub>	T <sub>s</sub> (min.)	I <sub>s</sub> (in/hr)	I <sub>w</sub> (in/hr)	Q <sub>s</sub> (cfs)	Q <sub>w</sub> (cfs)
Lot 1	1.3	0.90	0.90	15	3.83	7.37	4.5	8.6
Lot 2	0.9	0.90	0.90	15	3.83	7.37	3.1	6.0
Lot 3	0.9	0.90	0.90	15	3.83	7.37	3.1	6.0
Lot 4	2.3	0.90	0.90	15	3.83	7.37	7.9	15
Lot 5	2.1	0.90	0.90	15	3.83	7.37	7.2	14

DATE OF PREPARATION: DECEMBER 31, 2001  
 DATE OF TOPOGRAPHY: DECEMBER 10, 2001  
 CONTOUR INTERVALS = 1 FOOT

Benchmark: City of Wichita Disc on the Box of Light Pole at the SE corner of the intersection of Central and Hillside Avenue = 145.32 (City Datum)

- FH = Fire Hydrant
- GU = Guard Post (Ball)rd
- Guy = Guy Anchor
- HLP = High Line Pole
- ICV = Irrigation Control Valve - Valve Box
- LP = Light Pole
- PP = Power Pole
- ⊕ SigP = Signal Pole
- ⊙ Sign = Sign
- SSMH = Sanitary Sewer Manhole
- SWBMH = Southwestern Bell Manhole
- ⊕ TB = Traffic Box
- TMH = Traffic Manhole
- WM = Water Meter
- WV = Water Valve
- ⊕ XFMR = Transformer



Proposed Triple 8'x5' RCBC shall be installed through Tax Incremental Financing under the City of Wichita. Each lot shall be responsible for the construction and installation of each self-serving stormwater sewer. Stormwater sewer alignments and sizes shall be determined upon site-development.