

- LEGEND**
- Proposed Storm Water Sewer
 - Proposed Sanitary Sewer
 - Flow Direction Arrow
 - Drainage Area Divides
 - - - Existing Sanitary Sewer

AREA	AREA ACCUM.	T ₂	C	I ₂	I ₁₀₀	Q ₂	Q ₁₀₀	PIPE SLOPE	PIPE SIZE	INLETS
I.	0.83	15	0.7	4.06	8.98	2.4	5.2		Not Req.	None
II.	0.66	15	0.7	4.06	8.98	1.9	4.1		Not Req.	None
III.	5.81	20	0.7	3.63	8.03	14.8	32.7	0.56%	24"	Inlet + Plug for Future Ext.
IV.	1.91	18	0.7	3.63	8.03	18.5	41.0	0.80%	30"	2 Inlets
		18	0.7	3.78	8.37	5.1	11.2	0.56%	15"	Inlet + Plug for Future Ext.
V.	0.46	15	0.7	4.06	8.98	1.3	2.8			Inlet
VI.	0.60	18	0.7	3.78	8.37	6.4	14.2	0.36%	18"	
		15	0.7	4.06	8.98	1.7	3.8			
VII.	3.31	20	0.7	3.63	8.03	26.2	58.0	0.76%	36"	4 Inlets
		18	0.7	3.78	8.37	8.8	19.4	0.72%	24"	4 Inlets
VIII.	3.04	18	0.7	3.78	8.37	8.0	17.8	0.72%	24"	4 Inlets
		18	0.7	3.78	8.37	9.6	21.3	0.72%	24"	4 Inlets
IX.	3.63	18	0.7	3.78	8.37	9.6	21.3	0.72%	24"	4 Inlets
X.										Ditch in Reserve "A" will need ditch checks to control erosion.

NOTES:

1. ALL SEWER LINES SHALL BE 15' DEEP TO THE TOP OF THE MAIN PIPE.

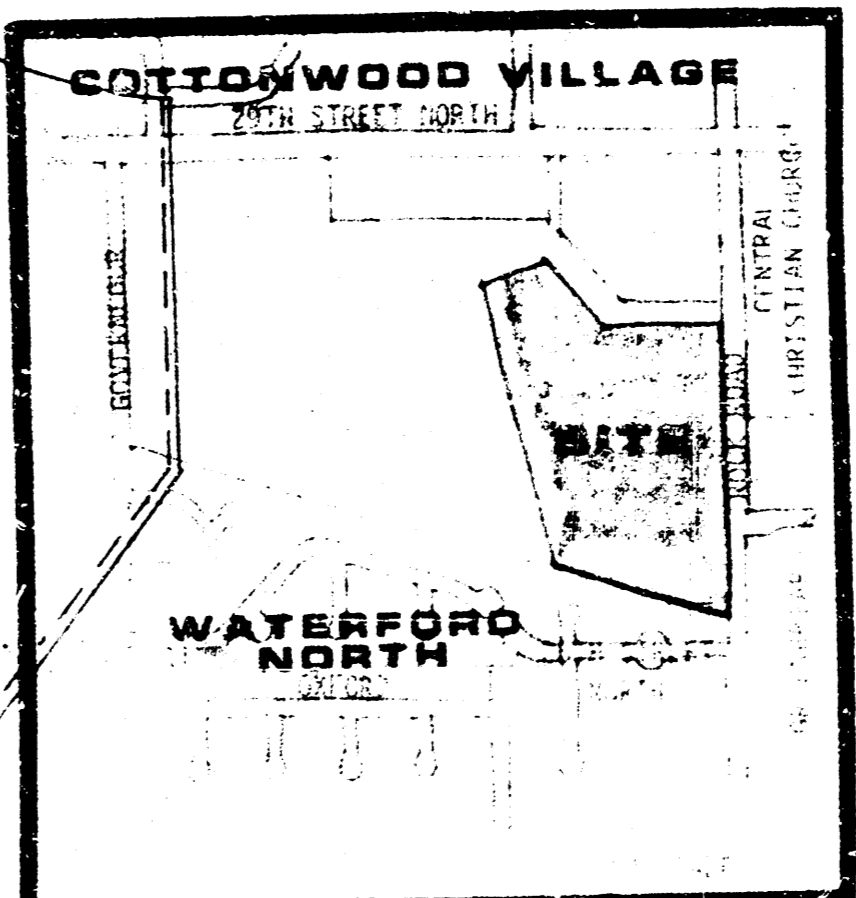
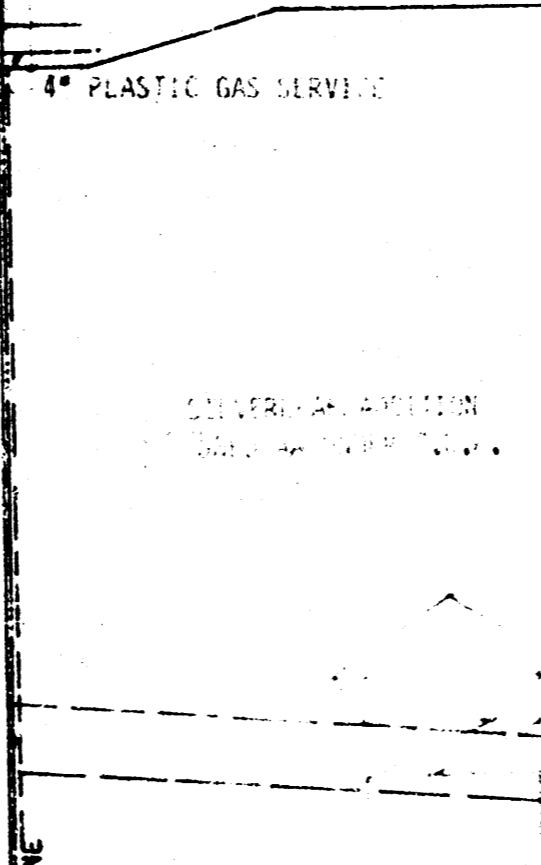
2. ALL SEWER LINES SHALL BE 15' DEEP TO THE TOP OF THE MAIN PIPE.

3. ALL SEWER LINES SHALL BE 15' DEEP TO THE TOP OF THE MAIN PIPE.

4. ALL SEWER LINES SHALL BE 15' DEEP TO THE TOP OF THE MAIN PIPE.

5. ALL SEWER LINES SHALL BE 15' DEEP TO THE TOP OF THE MAIN PIPE.

GREENBRIAR



SCALE: 1"=100'

**DRAINAGE PLAN FOR
COMOTARA RETIREMENT CENTER ADDITION.**

Project	KHB
City	Wichita, KS
County	Wichita, KS
Owner	Mid-Kansas Engineering Consultants PA
Design	Drainage
Scale	1"=100'
Sheet	1 of 1

MID-KANSAS ENGINEERING CONSULTANTS PA
240 NORTH ROCK ROAD
WICHITA, KANSAS 67206
682-6561