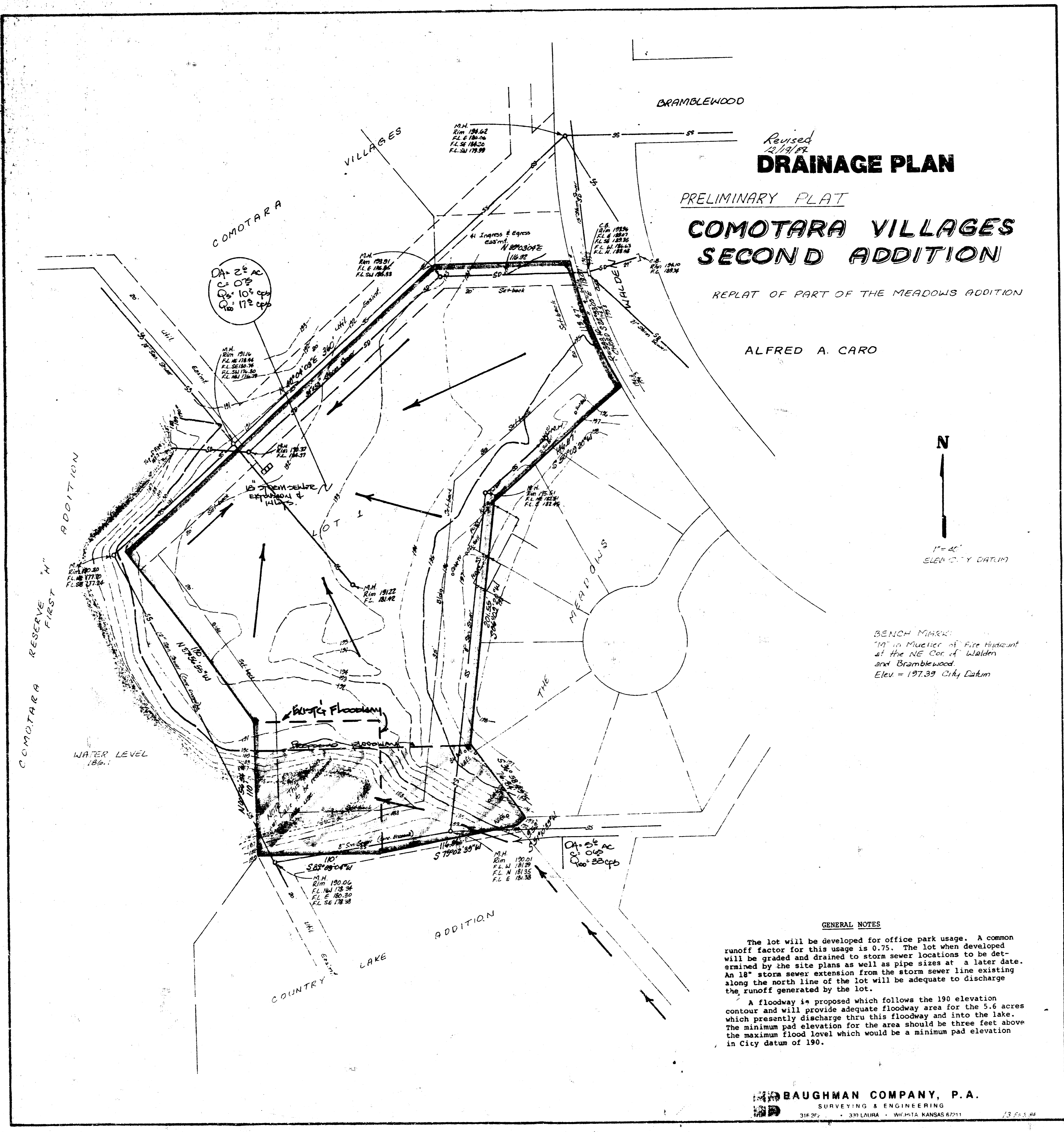


COMOTARA VILLAGES 2ND ADDITION
(Drainage)

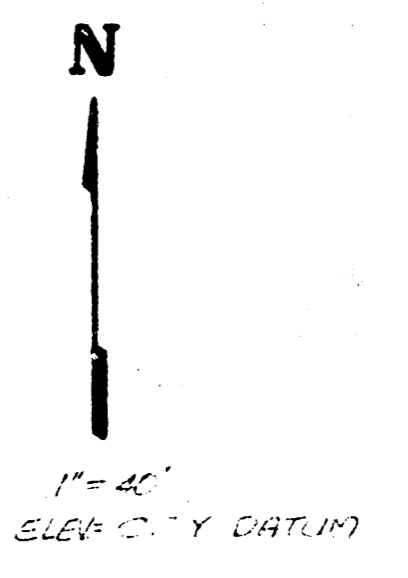


Revised
2/17/68
DRAINAGE PLAN

PRELIMINARY PLAT
**COMOTARA VILLAGES
SECOND ADDITION**

REPLAT OF PART OF THE MEADOWS ADDITION

ALFRED A. CARO



BENCH MARK:
10' in Mueller's Fire Hydrant
at the NE Cor. of Walden
and Bramblewood
Elev = 197.39 City Datum

GENERAL NOTES

The lot will be developed for office park usage. A common runoff factor for this usage is 0.75. The lot when developed will be graded and drained to storm sewer locations to be determined by the site plans as well as pipe sizes at a later date. An 18" storm sewer extension from the storm sewer line existing along the north line of the lot will be adequate to discharge the runoff generated by the lot.

A floodway is proposed which follows the 190 elevation contour and will provide adequate floodway area for the 5.6 acres which presently discharge thru this floodway and into the lake. The minimum pad elevation for the area should be three feet above the maximum flood level which would be a minimum pad elevation in City datum of 190.

BAUGHMAN COMPANY, P.A.
SURVEYING & ENGINEERING
312 S. W. 3rd AVENUE - SUITE 112 KANSAS CITY, MO. 64101

FILMED FROM THE BEST
AVAILABLE COPY