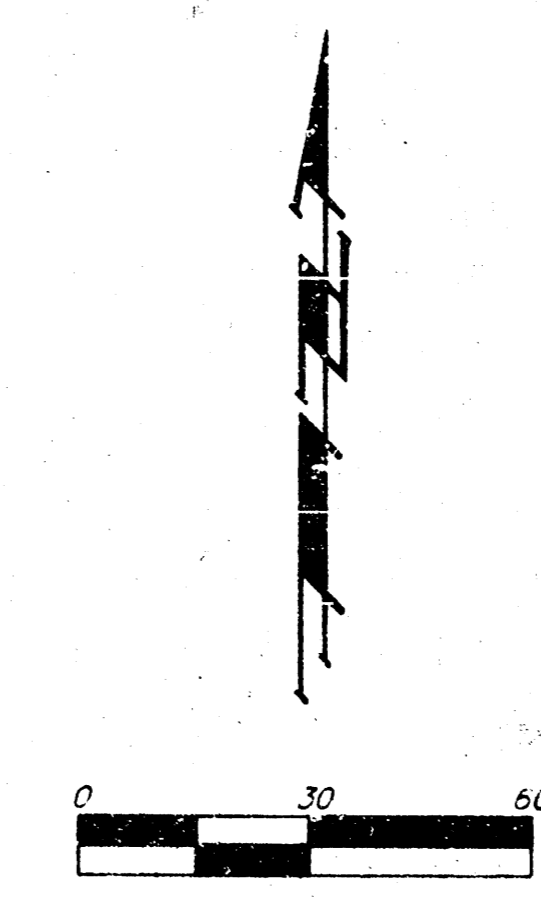
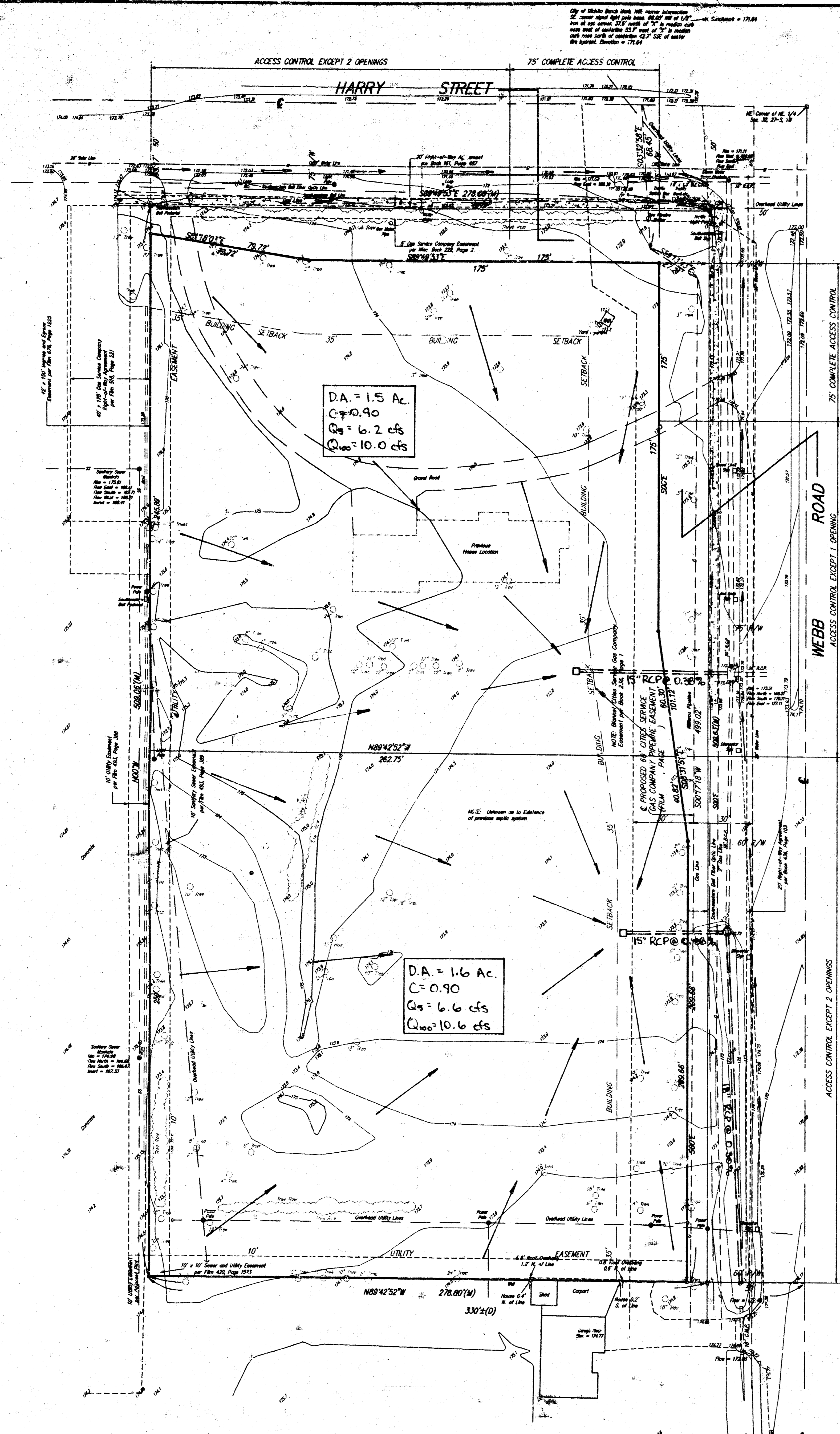


DRAINAGE PLAN CONOCO ADDITION WICHITA, SEDGWICK COUNTY, KANSAS



- (M) = Measured
- (D) = Described
- = Thimble Found
- = #4 Baughman Rebar Set

BENCHMARK:
CITY OF WICHITA BENCHMARK, NW CORNER OF THE INTERSECTION
OF HARRY STREET AND WEBB ROAD, SE. CORNER OF LIGHT POLE
BASE, 66.00' NW OF 1/2" IRON @ SEC. COR., 37.5' N OF "X"
IN MEDIAN CURB NOSE WEST OF CENTERLINE, 58.7' W OF "X" IN
MEDIAN CURB NOSE NORTH OF CENTERLINE, 42.7' SSE OF CENTER
OF FIRE HYDRANT.
ELEV. = 171.64 CITY DATUM

