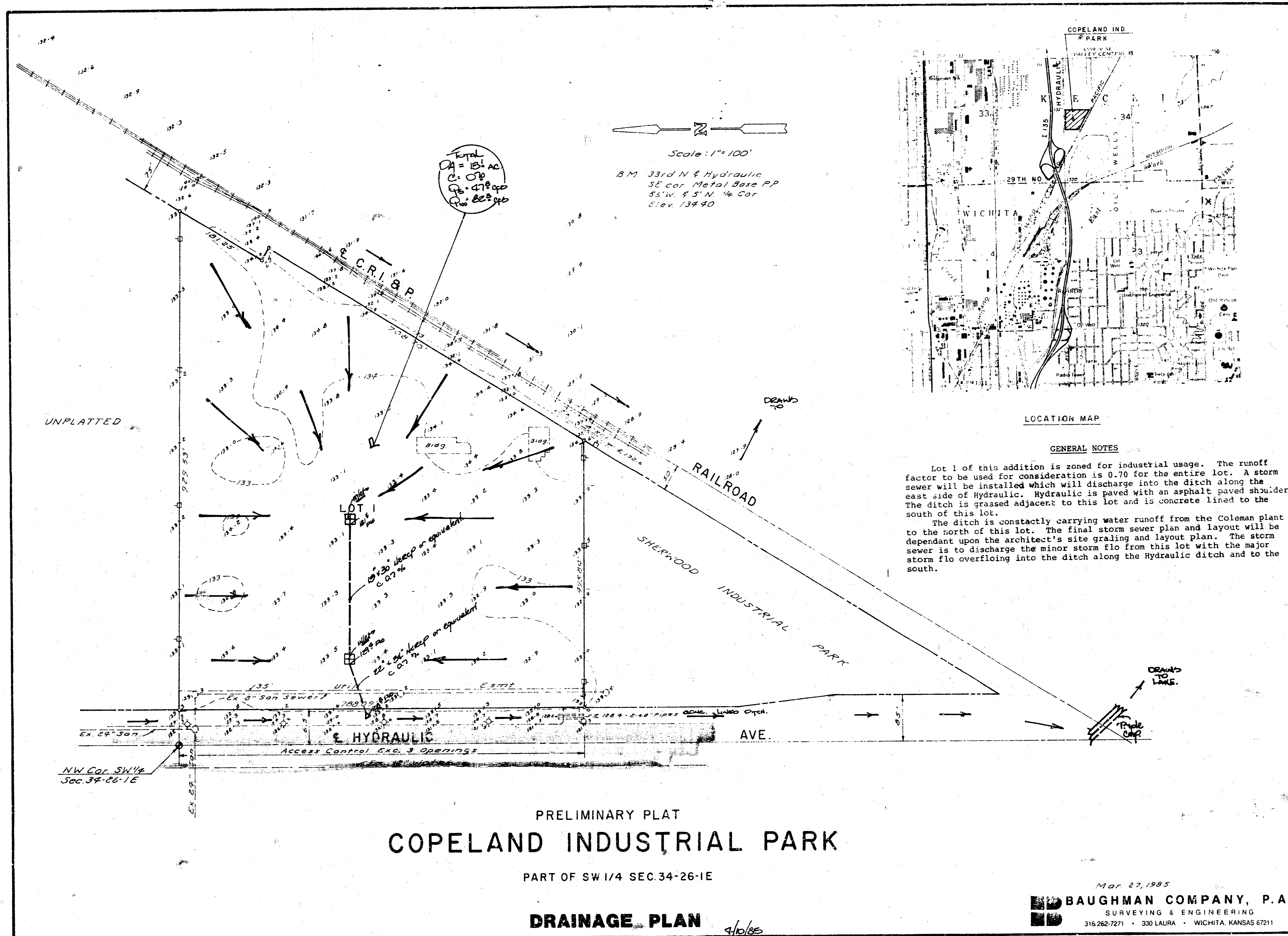
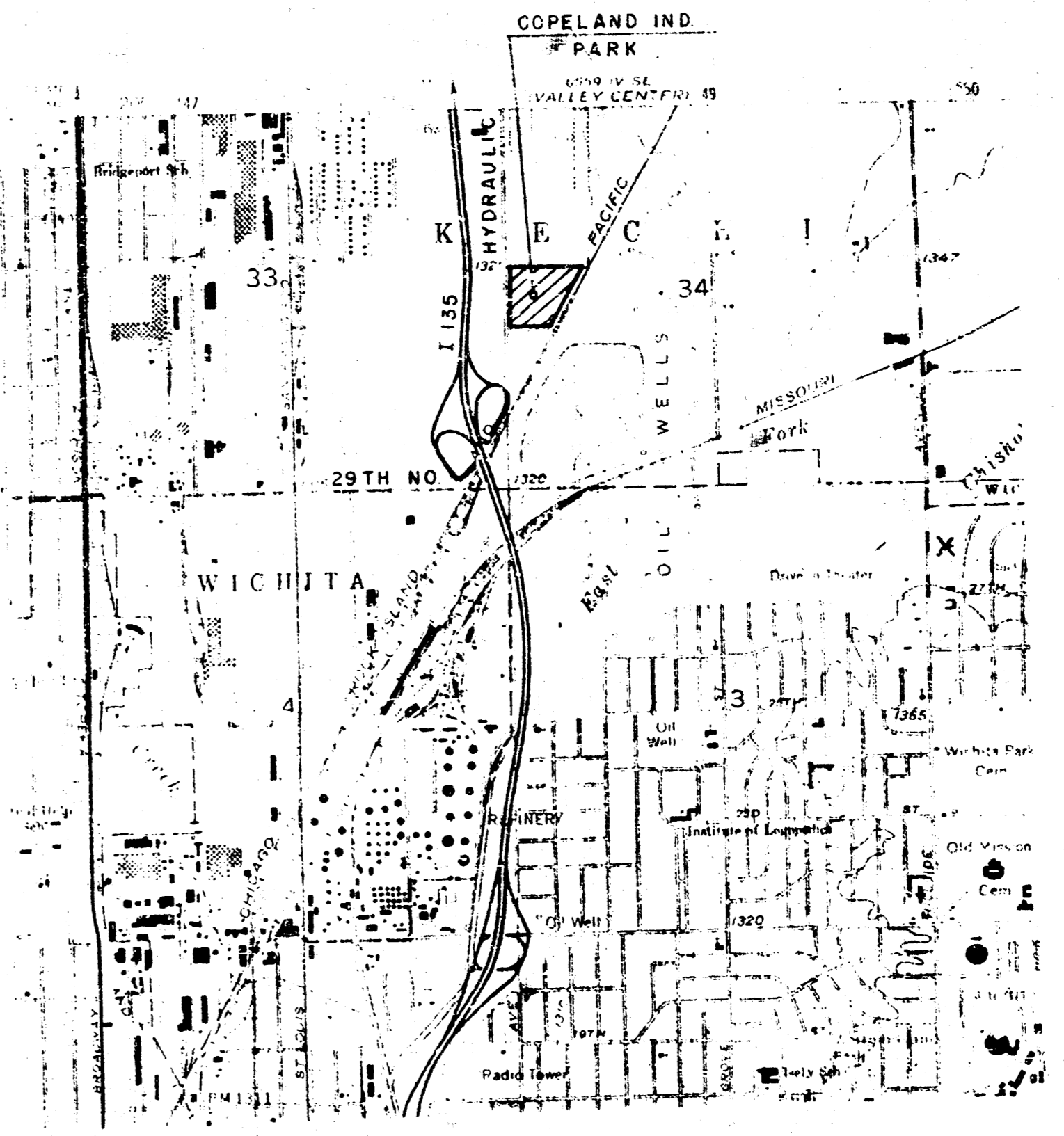


COPELAND INDUSTRIAL PARK  
(Drainage)



Scale: 1" = 100'  
 B.M. 33rd N & Hydraulic  
 SE cor. Metal Base P.P.  
 56' W. & 5' N. 1/4 Cor.  
 Elev. 134.40



LOCATION MAP

GENERAL NOTES

Lot 1 of this addition is zoned for industrial usage. The runoff factor to be used for consideration is 0.70 for the entire lot. A storm sewer will be installed which will discharge into the ditch along the east side of Hydraulic. Hydraulic is paved with an asphalt paved shoulder. The ditch is grassed adjacent to this lot and is concrete lined to the south of this lot.

The ditch is constantly carrying water runoff from the Coleman plant to the north of this lot. The final storm sewer plan and layout will be dependant upon the architect's site grading and layout plan. The storm sewer is to discharge the minor storm flow from this lot with the major storm flow overflowing into the ditch along the Hydraulic ditch and to the south.

PRELIMINARY PLAT  
**COPELAND INDUSTRIAL PARK**

PART OF SW 1/4 SEC. 34-26-1E

**DRAINAGE PLAN**

Mar 27, 1985  
**BAUGHMAN COMPANY, P.A.**  
 SURVEYING & ENGINEERING  
 316.262.7271 • 330 LAURA • WICHITA, KANSAS 67211

FILMED FROM THE BEST  
 AVAILABLE COPY