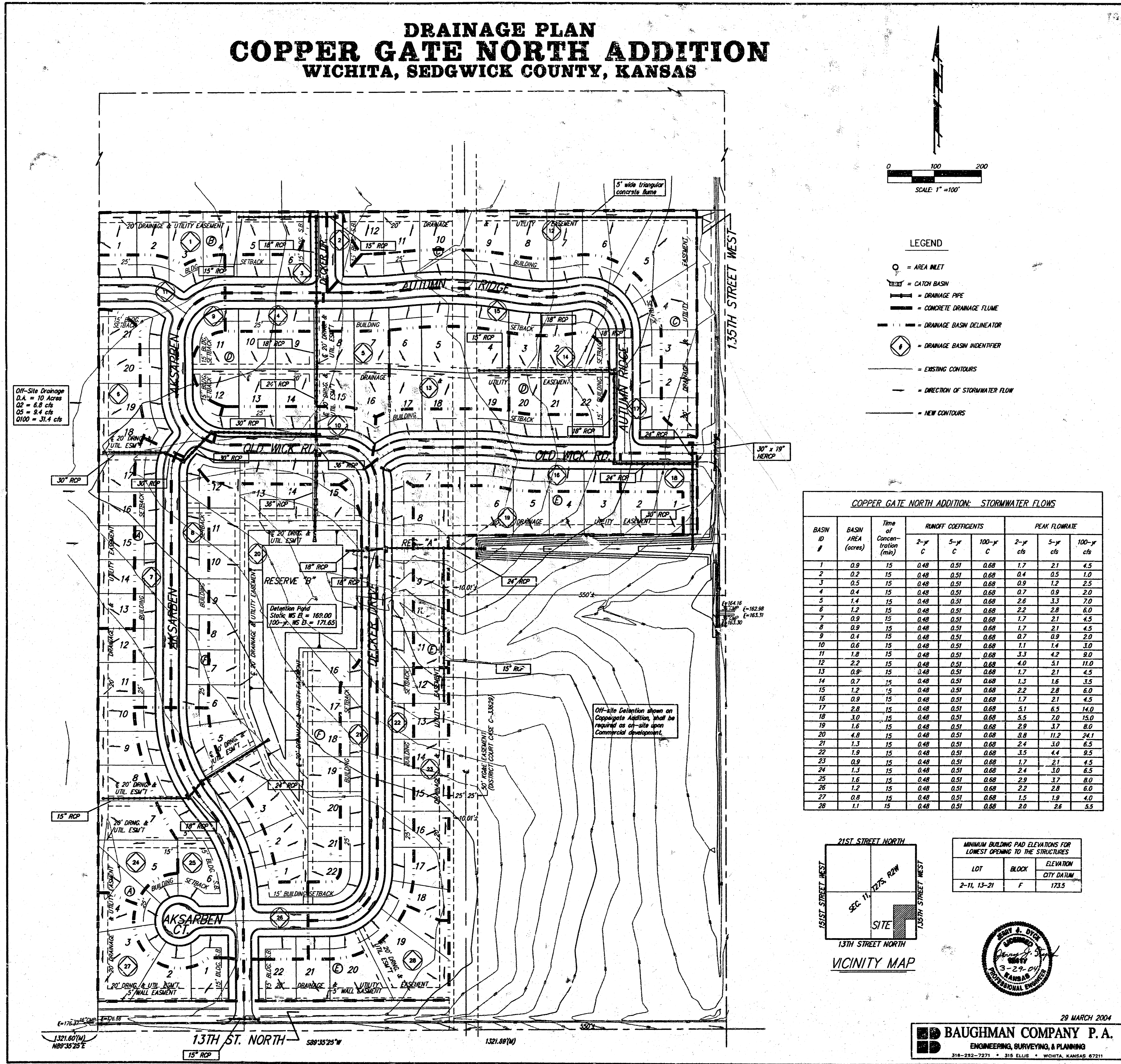


DRAINAGE PLAN COPPER GATE NORTH ADDITION WICHITA, SEDGWICK COUNTY, KANSAS



Off-Site Drainage
D.A. = 10 Acres
Q2 = 3.8 cfs
Q5 = 3.4 cfs
Q100 = 31.4 cfs

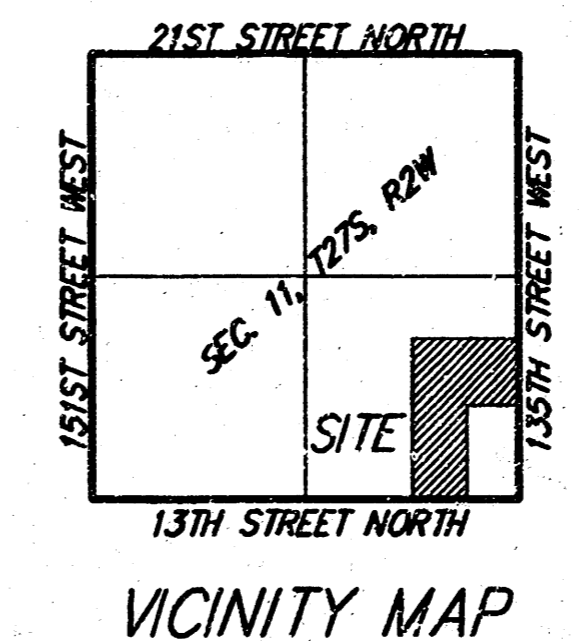
Detention Pond
Static WS EL = 165.00
100-yr. WS EL = 171.65

Off-site Detention shown on
Coppergate Addition, shall be
required as off-site upon
Commercial development.

- LEGEND**
- = AREA INLET
 - ⊕ = CATCH BASIN
 - = DRAINAGE PIPE
 - = CONCRETE DRAINAGE FLUME
 - = DRAINAGE BASIN DELINEATOR
 - ⊙ = DRAINAGE BASIN IDENTIFIER
 - = EXISTING CONTOURS
 - = DIRECTION OF STORMWATER FLOW
 - = NEW CONTOURS

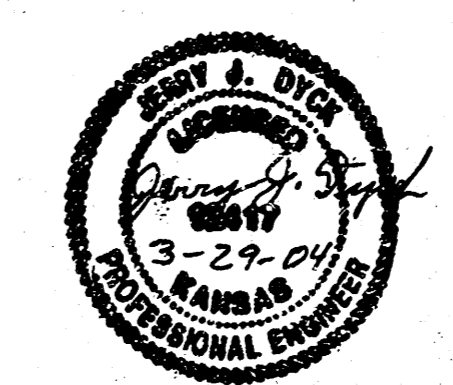
COPPER GATE NORTH ADDITION: STORMWATER FLOWS

BASIN ID #	BASIN AREA (acres)	Time of Concentration (min)	RUNOFF COEFFICIENTS			PEAK FLOWRATE		
			2-yr C	5-yr C	100-yr C	2-yr cfs	5-yr cfs	100-yr cfs
1	0.9	15	0.48	0.51	0.68	1.7	2.1	4.5
2	0.2	15	0.48	0.51	0.68	0.4	0.5	1.0
3	0.5	15	0.48	0.51	0.68	0.9	1.2	2.5
4	0.4	15	0.48	0.51	0.68	0.7	0.9	2.0
5	1.4	15	0.48	0.51	0.68	2.6	3.3	7.0
6	1.2	15	0.48	0.51	0.68	2.2	2.8	6.0
7	0.9	15	0.48	0.51	0.68	1.7	2.1	4.5
8	0.9	15	0.48	0.51	0.68	1.7	2.1	4.5
9	0.4	15	0.48	0.51	0.68	0.7	0.9	2.0
10	0.6	15	0.48	0.51	0.68	1.1	1.4	3.0
11	1.8	15	0.48	0.51	0.68	3.3	4.2	9.0
12	2.2	15	0.48	0.51	0.68	4.0	5.1	11.0
13	0.9	15	0.48	0.51	0.68	1.7	2.1	4.5
14	0.7	15	0.48	0.51	0.68	1.3	1.6	3.5
15	1.2	15	0.48	0.51	0.68	2.2	2.8	6.0
16	0.9	15	0.48	0.51	0.68	1.7	2.1	4.5
17	2.8	15	0.48	0.51	0.68	5.1	6.5	14.0
18	3.0	15	0.48	0.51	0.68	5.5	7.0	15.0
19	1.6	15	0.48	0.51	0.68	2.9	3.7	8.0
20	4.8	15	0.48	0.51	0.68	8.8	11.2	24.1
21	1.3	15	0.48	0.51	0.68	2.4	3.0	6.5
22	1.9	15	0.48	0.51	0.68	3.5	4.4	9.5
23	0.9	15	0.48	0.51	0.68	1.7	2.1	4.5
24	1.3	15	0.48	0.51	0.68	2.4	3.0	6.5
25	1.6	15	0.48	0.51	0.68	2.9	3.7	8.0
26	1.2	15	0.48	0.51	0.68	2.2	2.8	6.0
27	0.8	15	0.48	0.51	0.68	1.5	1.9	4.0
28	1.1	15	0.48	0.51	0.68	2.0	2.6	5.5



MINIMUM BUILDING PAD ELEVATIONS FOR LOWEST OPENING TO THE STRUCTURES

LOT	BLOCK	ELEVATION CITY DATUM
2-11, 13-21	F	173.5



29 MARCH 2004
BAUGHMAN COMPANY P. A.
ENGINEERING, SURVEYING, & PLANNING
316-252-7271 • 316 ELLIS • WICHITA, KANSAS 67211