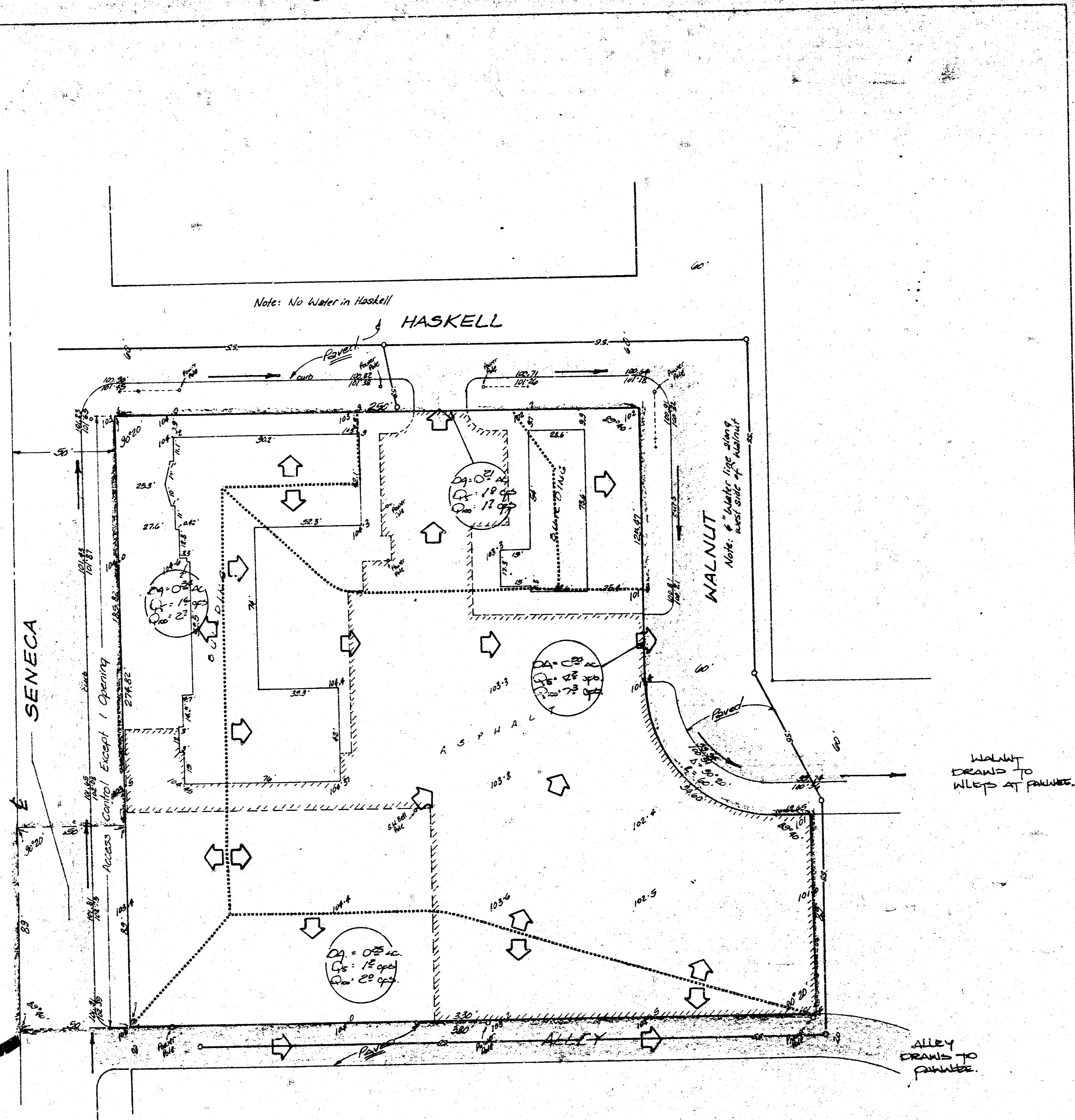


6-20-83
 Drainage plan



**SKETCH PLAT
CORNERSTONE ADDITION**

LOTS 1-2-3-4-5-6, BLOCK 1, MIDLAND VILLA,
 AN ADDITION TO WICHITA, KANSAS, & THE NORTH
 89 FEET OF THE WEST 380 FEET OF THE SOUTH
 470 FEET OF GOVERNMENT LOT 8 IN THE S.W. 1/4
 OF SEC. 32, TWP. 27-S, R-1-E OF THE 6TH P.M.,
 SEDGWICK COUNTY, KANSAS & PART OF WALNUT ST.

OWNER: WESTSIDE CHURCH OF
 THE NAZARENE

Bench mark:
 City disc, 46.8' west & 34'
 north of centerline of
 Seneca & May
 Elev. = 101.11 City Datum

CORNERSTONE ADDITION
(DRAINAGE)

BAUGHMAN COMPANY, P.A.
 SURVEYING & ENGINEERING
 316/262-7271 • 330 LAURA • WICHITA, KANSAS 67211

**CONFIRMATION
MEMO**

PROJECT Cornerstone Addition
 JOB NO.
 TO Chris Breitenstein
 FROM Brent Wooten
 REFERENCE Drainage Plan

DATE August 23, 1983

COPIES TO:
RECEIVED
 AUG 24 1983
 Dept. Of Engineering

Final Plat is scheduled for Subdivision for September 2, 1983.
 The Lot will be mostly paved or roof top areas. Runoff factor will
 be 0.90.
 The areas will drain as indicated. The drives discharge to Haskell
 and Walnut presently which both drain south to inlets on Walnut at
 Pawnee. The south portion of the plat drain to the paved alley
 which also drains to Pawnee. A small portion of the plat drains
 west to Seneca presently.

PAGE ___ OF ___

**FILMED FROM THE BEST
AVAILABLE COPY...**