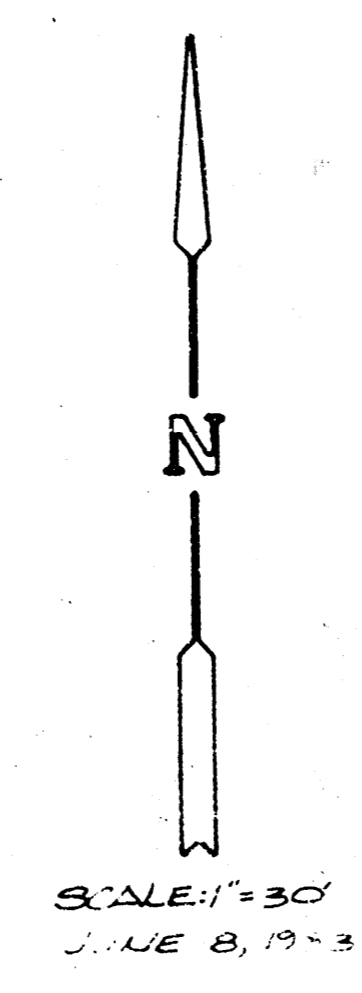
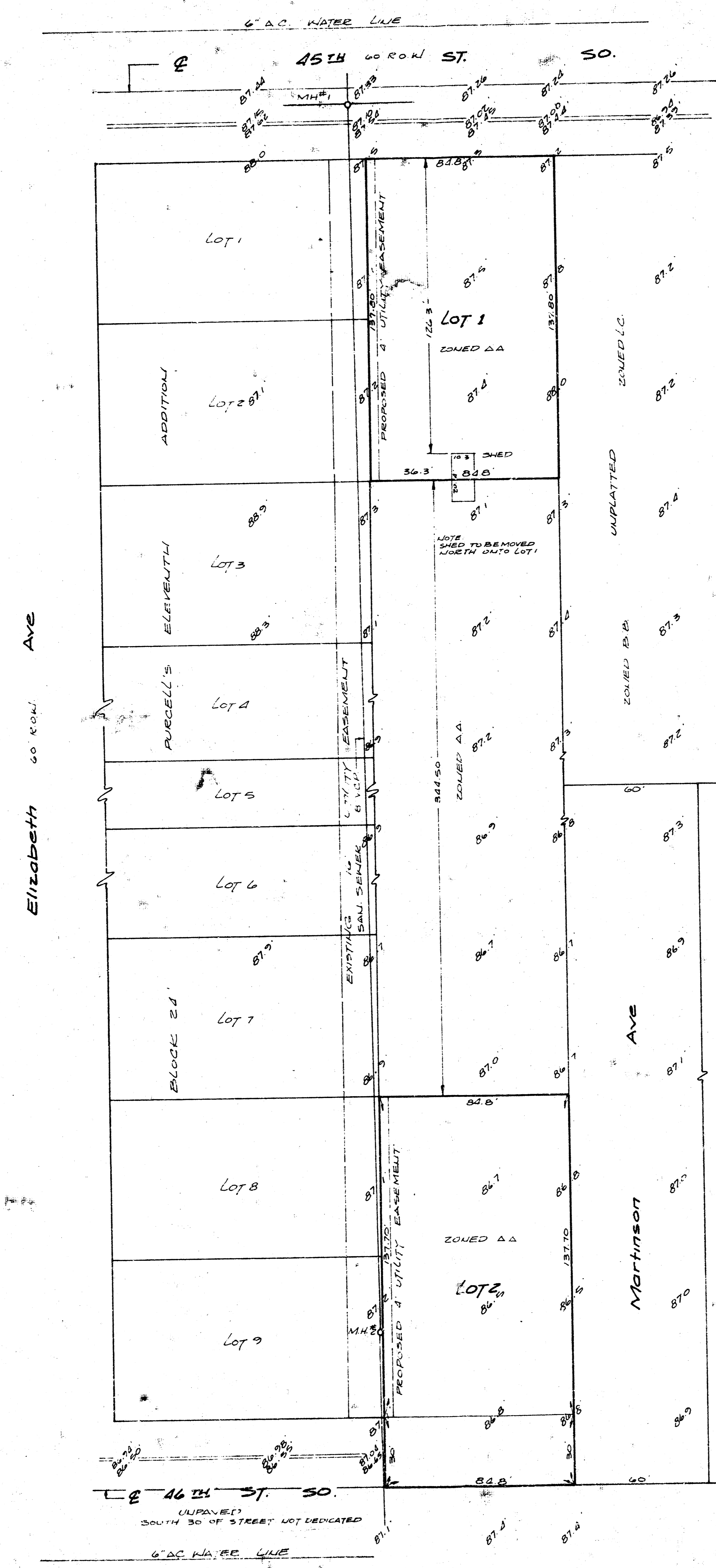


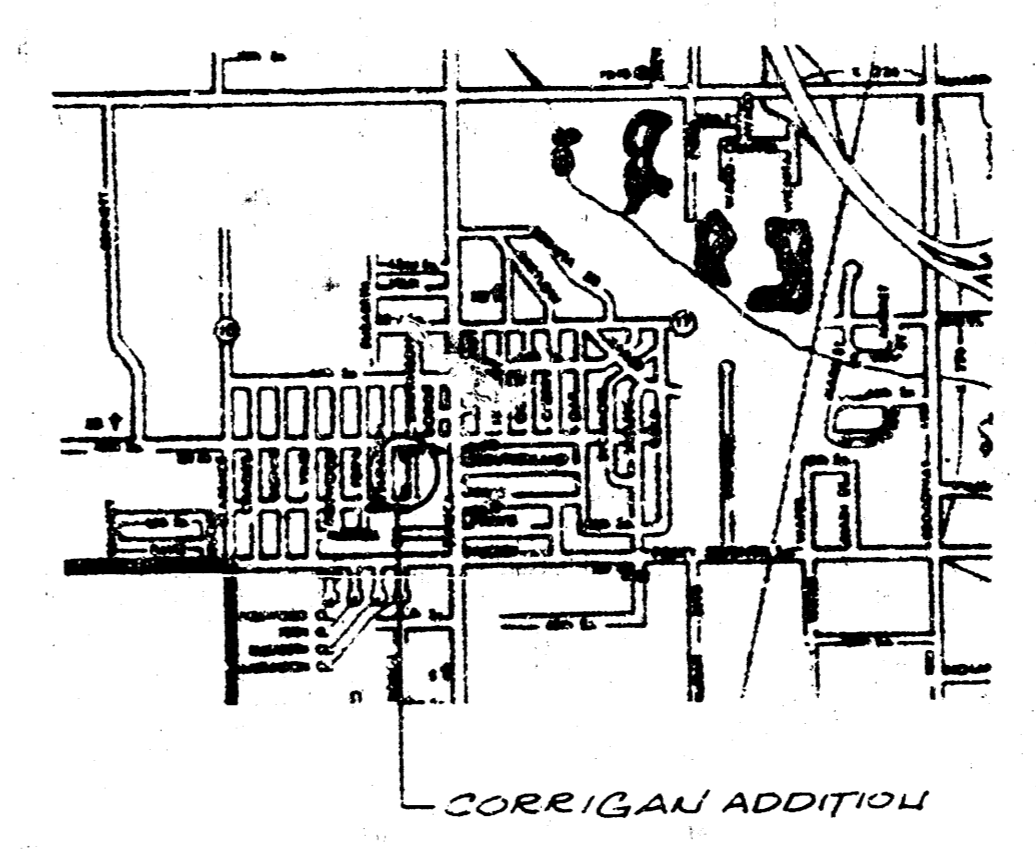
No Drainage Plan
Was found

CORRIGAN ADDITION
(DRAINAGE)

PRELIMINARY PLAT
CORRIGAN ADDITION
WICHITA, SEDGWICK COUNTY, KANSAS



SCALE: 1"=30'
JUNE 8, 1923



UTILITIES:
OVERHEAD ELECTRIC AND UNDERGROUND
TELEPHONE LOCATED IN 1/2 CITY
EASEMENT, BLOCK 21, PURCELL'S 11TH ADDITION

SAN SEWER
 MANHOLE #1 - BING 8725
 OUTLET 73 23
 INLET 75 23
 INLET SOUTH 75 30

MANHOLE #2 - BING 84 69
 MANHOLE UNDER FENCE UNABLE TO
 OPEN

MANHOLE #3 - BING 84 14
 OUTLET 82 18
 INLET 82 18
 INLET EAST 82 39
 MANHOLE

TOPOGRAPHIC SURVEY - 5/27/23
BENCH MARK - CITY DISC. 47TH ST SO. & SENECA
ELEV. = 8730'

PREPARED BY:
A. R. CAMPEL, LAND SURVEYORS
2103 N. 17TH ST.
WICHITA, KANSAS 67203

FILMED FROM THE BEST
AVAILABLE COPY